



October 19<sup>th</sup>, 2022

Kyle C. Wanner, Executive Director  
North Dakota Aeronautics Commission  
(701) 328-9651

**FOR IMMEDIATE RELEASE**

**Air Travel Demand Remains Strong Throughout North Dakota**

North Dakota's eight commercial service airports posted a total of 84,925 airline passenger boardings during the month of September, 2022. This is a 13% increase from the 74,943 boardings that the state experienced last year in September, 2021. It is also only 5% below September 2019's pre-pandemic passenger counts of 89,925.

Signs that air travel demand remains strong in North Dakota is prevalent throughout the data. Highlights include:

- Five of the commercial service airports are showing higher passenger volumes in this month than were reported during the last pre-pandemic September that occurred in 2019.
- North Dakota's largest airport facility - The Hector International Airport in Fargo, had its best September on record with a total of 35,360 passengers. This is a 3.6% increase or an additional 1,225 passengers than its previous best month of September which was set in 2019.
- The state's airline passenger volume is currently only 5% below pre-pandemic levels which is also similar to the recovery in demand seen in air travel throughout the United States. Since March of 2020, this is the closest that North Dakota has been to reaching pre-pandemic passenger counts.
- A majority of the North Dakota airports continue to report average airline load factors above 80% which is another indicator that flights are full and the demand for air travel is healthy.

"North Dakota's air service continues to show an elevated level of demand for the seats that are available," stated Kyle Wanner, Executive Director for the North Dakota Aeronautics Commission. "The message continues to be the same in that our communities would like to see additional flights and purchasable seats become available for the flying public. As the airlines continue to make decisions on where to assign their available resources; we hope that the positive passenger demand seen in North Dakota will help to justify and attract additional flight and seat allocations to our markets."



## September Boardings Comparison of Commercial Service Airports

Prepared by: N.D. Aeronautics Commission

	2022	2021	2020	2019	2018	2017	2016	2015	2014	2013	Difference 2022/2021	% Change	Difference 2022/2019	% Change
<b>Bismarck</b>	20,017	18,230	10,249	23,891	22,561	21,141	21,802	20,234	17,088	17,806	<b>1,787</b>	<b>9.80%</b>	<b>-3,874</b>	<b>-16.22%</b>
<b>Devils Lake</b>	548	504	277	563	410	412	486	390	214	269	<b>44</b>	<b>8.73%</b>	<b>-15</b>	<b>-2.66%</b>
<b>Dickinson</b>	2,058	1,625	786	2,020	1,772	1,511	1,383	3,498	5,405	4,022	<b>433</b>	<b>26.65%</b>	<b>38</b>	<b>1.88%</b>
<b>Fargo</b>	35,360	32,665	16,449	34,135	29,825	27,656	30,247	31,121	33,487	28,425	<b>2,695</b>	<b>8.25%</b>	<b>1,225</b>	<b>3.59%</b>
<b>Grand Forks</b>	6,081	5,639	3,144	8,157	8,164	8,446	8,853	9,321	8,766	9,568	<b>442</b>	<b>7.84%</b>	<b>-2,076</b>	<b>-25.45%</b>
<b>Jamestown</b>	826	934	385	824	880	969	930	589	426	253	<b>(108)</b>	<b>-11.56%</b>	<b>2</b>	<b>0.24%</b>
<b>Minot</b>	12,593	10,094	6,821	12,496	11,340	10,867	11,777	13,868	16,899	17,250	<b>2,499</b>	<b>24.76%</b>	<b>97</b>	<b>0.78%</b>
<b>Williston</b>	7,442	5,252	1,340	7,201	5,987	5,587	5,510	8,313	10,418	7,900	<b>2,190</b>	<b>41.70%</b>	<b>241</b>	<b>3.35%</b>
<b>TOTALS</b>	<b>84,925</b>	<b>74,943</b>	<b>39,451</b>	<b>89,287</b>	<b>80,939</b>	<b>76,589</b>	<b>80,988</b>	<b>87,334</b>	<b>92,703</b>	<b>85,493</b>	<b>9,982</b>	<b>13.32%</b>	<b>-4,362</b>	<b>-4.89%</b>



# YTD Boardings Comparison of Commercial Service Airports

Through September

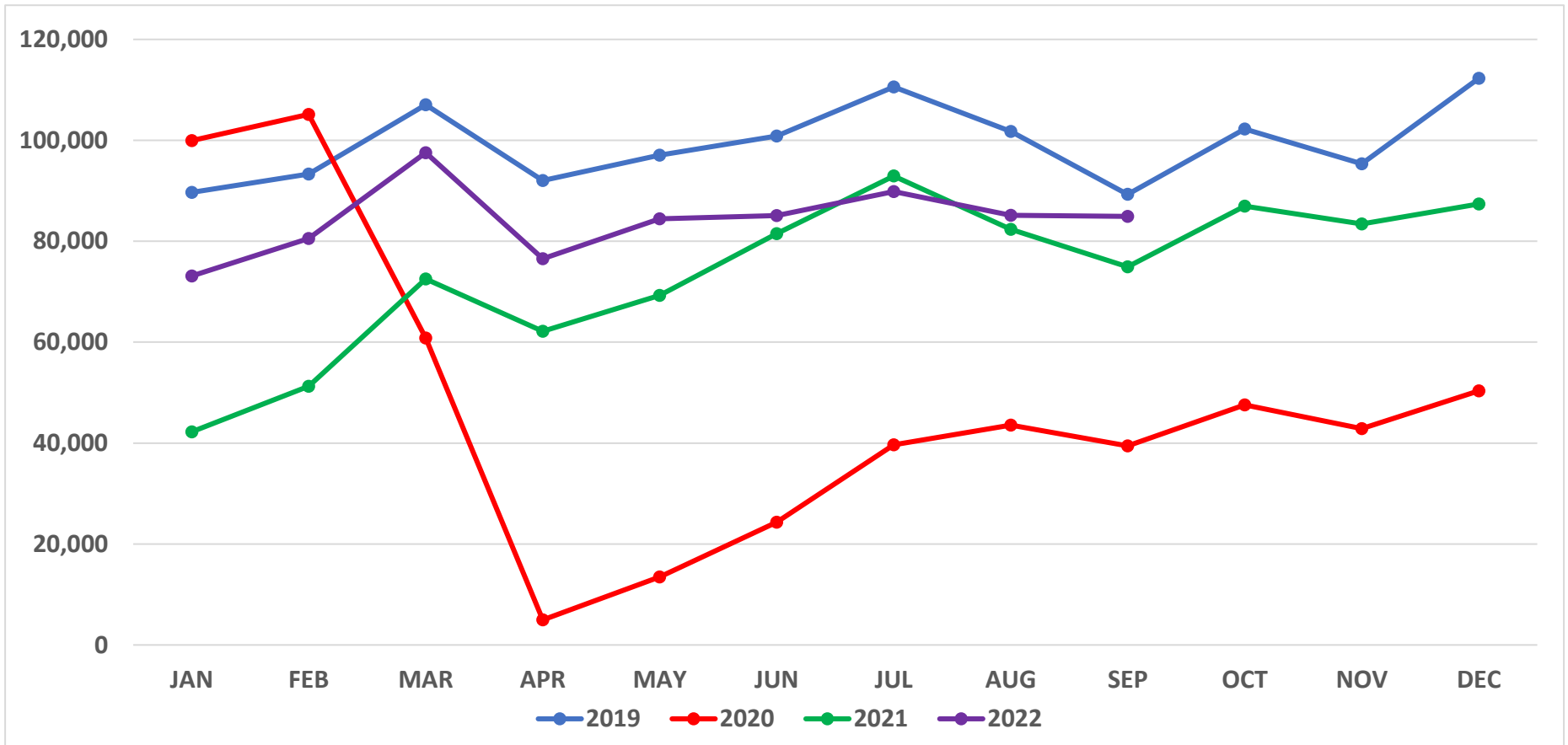
Prepared by: N.D. Aeronautics Commission

18-Oct-22

	YTD 2022	YTD 2021	YTD 2020	YTD 2019	YTD 2018	YTD 2017	YTD 2016	YTD 2015	YTD 2014	YTD 2013	Difference	% Change
Bismarck	180,750	155,175	111,948	229,751	206,744	204,849	197,064	189,300	174,293	177,396	<b>25,575</b>	<b>16.48%</b>
Devils Lake	5,112	4,627	2,884	5,104	4,839	5,105	4,776	3,319	1,441	2,014	<b>485</b>	<b>10.48%</b>
Dickinson	16,017	11,575	8,731	17,358	16,194	13,629	12,292	33,345	42,625	22,186	<b>4,442</b>	<b>38.38%</b>
Fargo	334,457	282,475	181,331	347,521	314,238	294,935	296,395	332,243	340,689	300,699	<b>51,982</b>	<b>18.40%</b>
Grand Forks	63,379	48,391	35,242	85,414	81,843	84,877	96,608	105,974	106,046	109,013	<b>14,988</b>	<b>30.97%</b>
Jamestown	8,677	7,721	4,223	8,295	9,246	9,848	8,360	5,615	1,727	1,988	<b>956</b>	<b>12.38%</b>
Minot	102,419	89,057	61,662	122,068	113,044	106,568	113,894	136,571	163,320	162,917	<b>13,362</b>	<b>15.00%</b>
Williston	46,468	30,039	25,273	66,208	54,270	50,559	50,847	84,428	86,091	67,558	<b>16,429</b>	<b>54.69%</b>
<b>TOTALS</b>	<b>757,279</b>	<b>629,060</b>	<b>431,294</b>	<b>881,719</b>	<b>800,418</b>	<b>770,370</b>	<b>780,236</b>	<b>890,795</b>	<b>916,232</b>	<b>843,771</b>	<b>128,219</b>	<b>20.38%</b>
Commercial (BIS-FAR-GFK-MOT-WIL)	727,473	605,137	415,456	850,962	770,139	741,788	754,808	848,516	870,439	817,583	<b>122,336</b>	<b>20.22%</b>
Regional (DVL-DIK-JMS)	29,806	23,923	15,838	30,757	30,279	28,582	25,428	42,279	45,793	26,188	<b>5,883</b>	<b>24.59%</b>



## North Dakota Airline Passenger Boarding Trends (2019 - 2022)

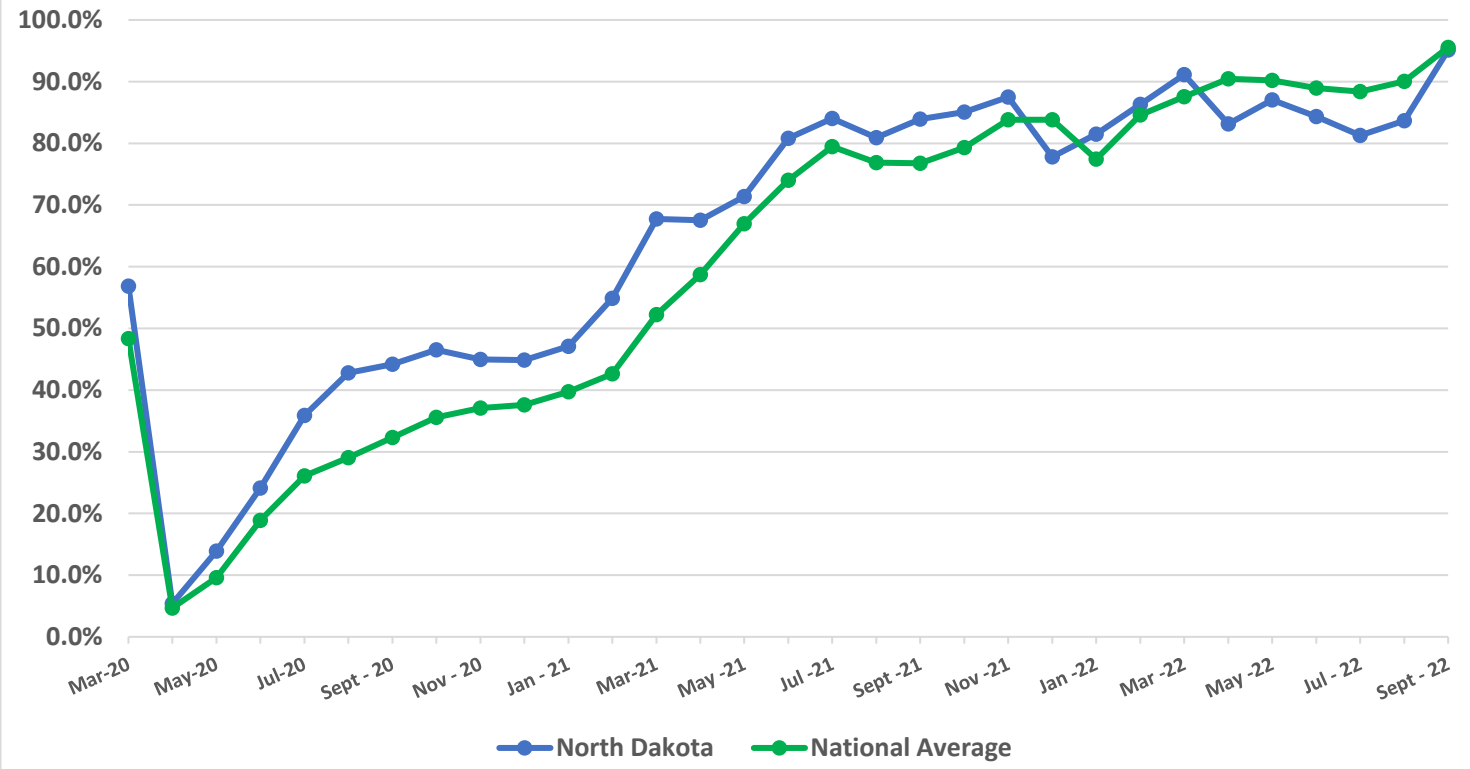




## Airline Enplanement Monthly Retention Rates North Dakota versus National Average *(Comparing each month to the same month in 2019)*

ND vs. TSA Enplanement Retention

Month	ND	TSA
Mar-20	56.8%	48.3%
Apr-20	5.4%	4.7%
May-20	13.9%	9.6%
Jun-20	24.1%	18.9%
Jul-20	35.9%	26.1%
Aug-20	42.8%	29.0%
Sept -20	44.2%	32.3%
Oct -20	46.5%	35.6%
Nov -20	45.0%	37.1%
Dec -20	44.8%	37.6%
Jan -21	47.1%	39.7%
Feb -21	54.9%	42.6%
Mar-21	67.7%	52.2%
Apr -21	67.5%	58.7%
May -21	71.4%	67.0%
Jun -21	80.8%	74.0%
Jul -21	84.0%	79.5%
Aug -21	80.9%	76.9%
Sept -21	83.9%	76.8%
Oct -21	85.0%	79.3%
Nov -21	87.5%	83.8%
Dec -21	77.8%	83.8%
Jan -22	81.5%	77.4%
Feb -22	86.3%	84.6%
Mar -22	91.2%	87.6%
Apr -22	83.2%	90.5%
May -22	87.0%	90.2%
Jun -22	84.3%	89.0%
Jul -22	81.3%	88.4%
Aug -22	83.7%	90.1%
Sept -22	95.1%	95.6%



National statistics were retrieved from TSA website: <https://www.tsa.gov/coronavirus/passenger-throughput>