



November 21st, 2022

Kyle C. Wanner, Executive Director
North Dakota Aeronautics Commission
(701) 328-9651

FOR IMMEDIATE RELEASE

Air Travel Poised for Strong Holiday Season

North Dakota's eight commercial service airports posted a total of 94,620 airline passenger boardings during the month of October, 2022. This is a 9% increase from the 86,948 boardings that the state experienced one year ago in October of 2021.

The demand for air travel in North Dakota has continued its steady recovery throughout 2022 and passenger levels have stabilized to approximately 7% below pre-pandemic numbers. North Dakota's air service continues to show an elevated level of demand for the seats that are available, and passengers continue to experience airline flights that are at or close to capacity. This strong demand is expected to continue throughout the holiday season and it is recommended that passengers work to secure tickets a few weeks in advance of any planned trips if possible.

"We are expecting a busy upcoming holiday season for air travel and as always, it is highly recommended for passengers to arrive to the airport early to ensure that an adequate amount of time is provided for TSA screening and boarding procedures," stated Kyle Wanner, Executive Director of the North Dakota Aeronautics Commission. "Additionally, winter weather has also arrived to North Dakota and patience is requested as snow removal and aircraft deicing operations on our airports ensure for a safe operating environment for the traveling public."



October Boardings Comparison of Commercial Service Airports

Prepared by: N.D. Aeronautics Commission

	2022	2021	2020	2019	2018	2017	2016	2015	2014	2013	Difference 2022/2021	% Change	Difference 2022/2019	% Change
Bismarck	21,510	19,089	12,617	26,756	24,743	21,971	24,791	24,177	23,491	19,707	2,421	12.68%	-5,246	-19.61%
Devils Lake	665	651	317	627	633	476	497	472	339	222	14	2.15%	38	6.06%
Dickinson	2,131	2,052	841	2,107	2,198	1,702	1,417	3,524	5,832	4,822	79	3.85%	24	1.14%
Fargo	39,578	38,873	19,591	39,968	35,847	32,394	33,292	33,319	36,633	31,445	705	1.81%	-390	-0.98%
Grand Forks	8,868	7,339	3,897	9,889	10,364	9,650	10,341	12,853	12,021	12,697	1,529	20.83%	-1,021	-10.32%
Jamestown	926	1,215	429	896	804	1,042	991	782	489	246	(289)	-23.79%	30	3.35%
Minot	12,804	11,949	7,845	14,589	12,341	12,162	12,763	15,881	19,699	19,782	855	7.16%	-1,785	-12.24%
Williston	8,138	5,780	2,037	7,408	6,761	6,174	5,859	7,958	11,509	8,784	2,358	40.80%	730	9.85%
TOTALS	94,620	86,948	47,574	102,240	93,691	85,571	89,951	98,966	110,013	97,705	7,672	8.82%	-7,620	-7.45%



YTD Boardings Comparison of Commercial Service Airports

Through October

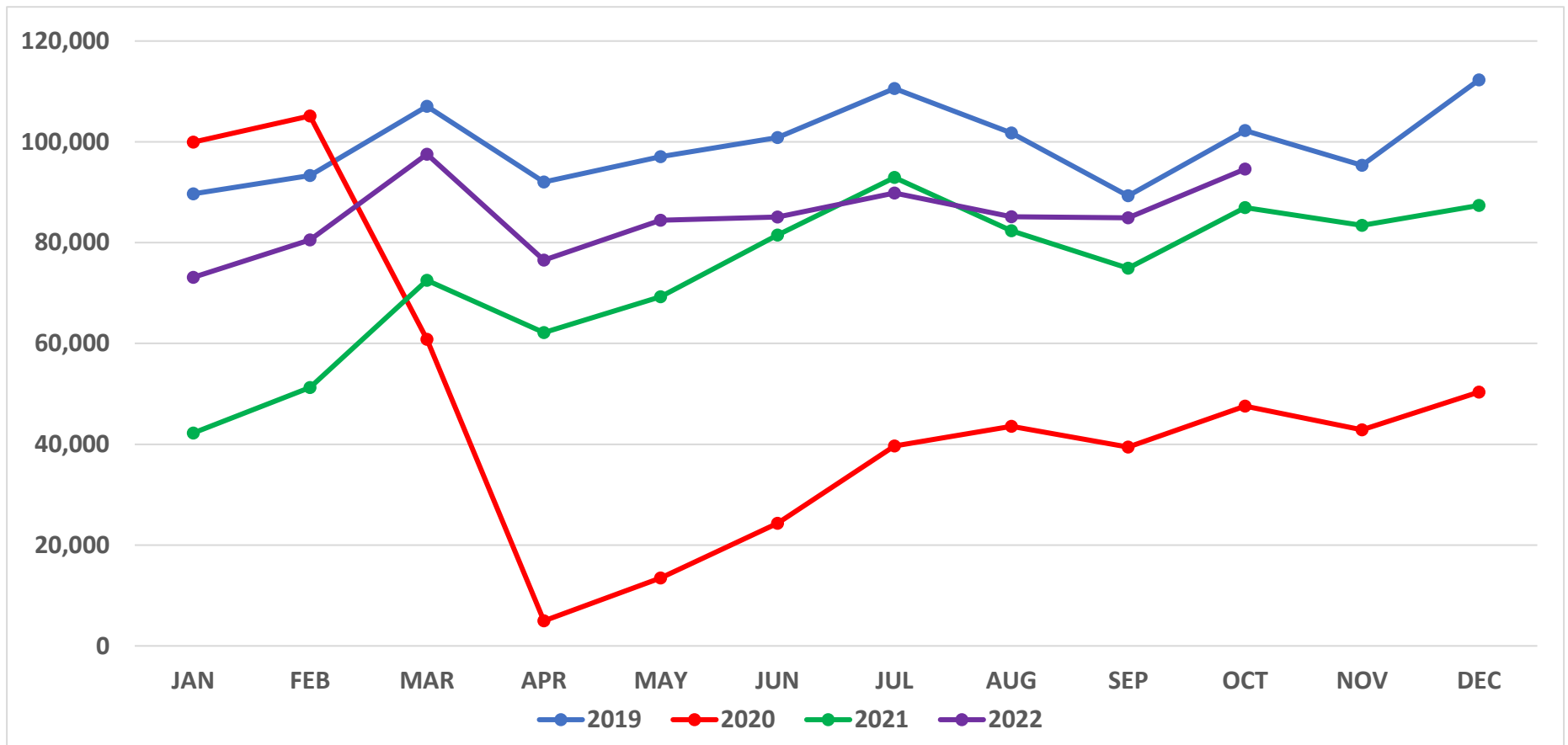
Prepared by: N.D. Aeronautics Commission

16-Nov-22

	YTD 2022	YTD 2021	YTD 2020	YTD 2019	YTD 2018	YTD 2017	YTD 2016	YTD 2015	YTD 2014	YTD 2013	Difference	% Change
Bismarck	202,260	174,264	124,565	256,507	231,487	226,820	221,855	213,477	197,784	197,103	27,996	16.07%
Devils Lake	5,777	5,278	3,201	5,731	5,472	5,581	5,273	3,791	1,780	2,236	499	9.45%
Dickinson	18,148	13,627	9,572	19,465	18,392	15,331	13,709	36,869	48,457	27,008	4,521	33.18%
Fargo	373,888	321,348	200,922	387,489	350,085	327,329	329,687	365,562	377,322	332,144	52,540	16.35%
Grand Forks	72,247	55,730	39,139	95,303	92,207	94,527	106,949	118,827	118,067	121,710	16,517	29.64%
Jamestown	9,603	8,936	4,652	9,191	10,050	10,890	9,351	6,397	2,216	2,234	667	7.46%
Minot	115,223	101,006	69,507	136,657	125,385	118,730	126,657	152,452	183,019	182,699	14,217	14.08%
Williston	54,606	35,819	27,310	73,616	61,031	56,733	56,706	92,386	97,600	76,342	18,787	52.45%
TOTALS	851,752	716,008	478,868	983,959	894,109	855,941	870,187	989,761	1,026,245	941,476	135,744	18.96%
Commercial (BIS-FAR-GFK-MOT-WIL)	818,224	688,167	461,443	949,572	860,195	824,139	841,854	942,704	973,792	909,998	130,057	18.90%
Regional (DVL-DIK-JMS)	33,528	27,841	17,425	34,387	33,914	31,802	28,333	47,057	52,453	31,478	5,687	20.43%



North Dakota Airline Passenger Boarding Trends (2019 - 2022)





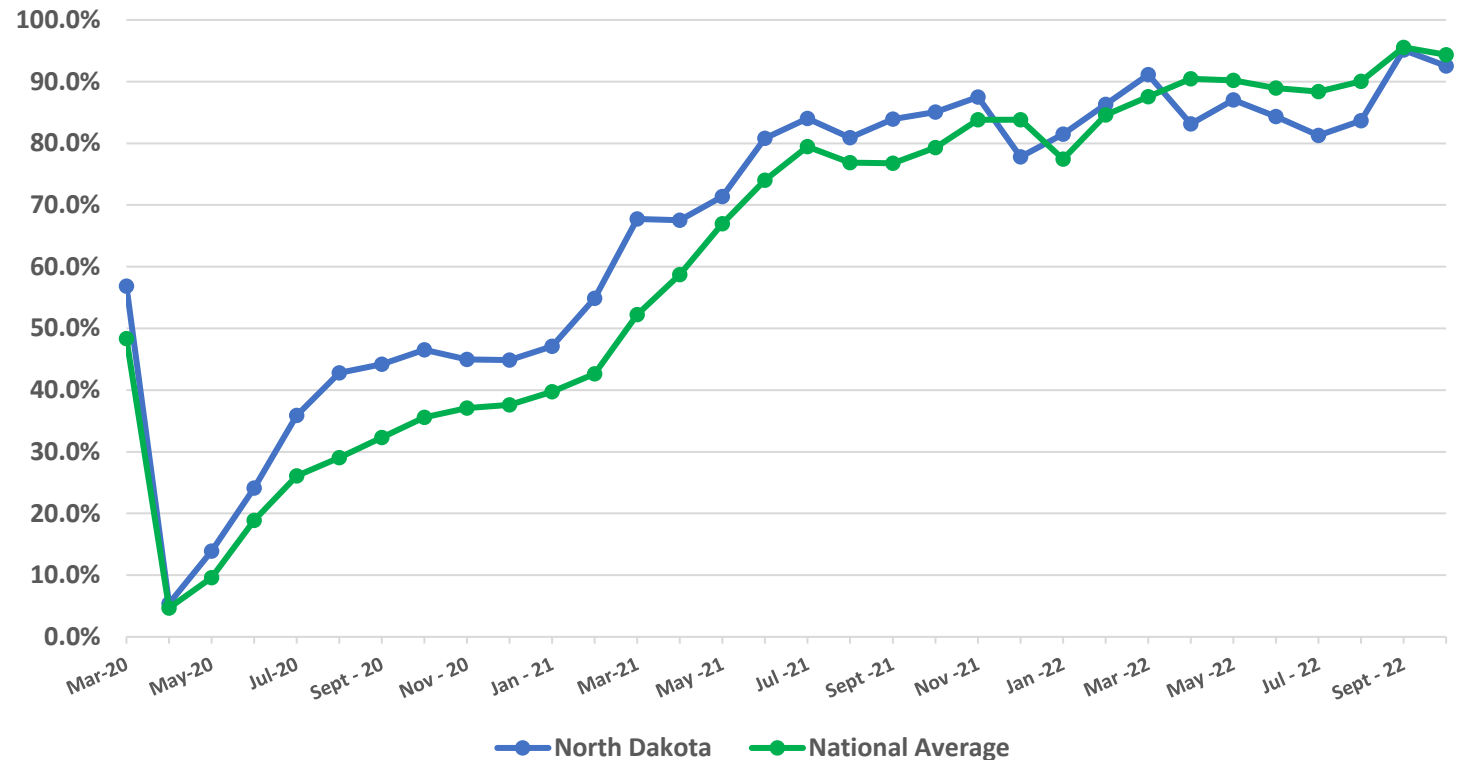
Airline Enplanement Monthly Retention Rates

North Dakota versus National Average

(Comparing each month to the same month in 2019)

ND vs. TSA Enplanement Retention

Month	ND	TSA
Mar-20	56.8%	48.3%
Apr-20	5.4%	4.7%
May-20	13.9%	9.6%
Jun-20	24.1%	18.9%
Jul-20	35.9%	26.1%
Aug-20	42.8%	29.0%
Sept -20	44.2%	32.3%
Oct -20	46.5%	35.6%
Nov -20	45.0%	37.1%
Dec -20	44.8%	37.6%
Jan -21	47.1%	39.7%
Feb -21	54.9%	42.6%
Mar-21	67.7%	52.2%
Apr -21	67.5%	58.7%
May -21	71.4%	67.0%
Jun -21	80.8%	74.0%
Jul -21	84.0%	79.5%
Aug -21	80.9%	76.9%
Sept -21	83.9%	76.8%
Oct -21	85.0%	79.3%
Nov -21	87.5%	83.8%
Dec -21	77.8%	83.8%
Jan -22	81.5%	77.4%
Feb -22	86.3%	84.6%
Mar -22	91.2%	87.6%
Apr -22	83.2%	90.5%
May -22	87.0%	90.2%
Jun -22	84.3%	89.0%
Jul -22	81.3%	88.4%
Aug -22	83.7%	90.1%
Sept -22	95.1%	95.6%
Oct -22	92.5%	94.4%



National statistics were retrieved from TSA website: <https://www.tsa.gov/coronavirus/passenger-throughput>