



December 21st, 2022

Kyle C. Wanner, Executive Director
North Dakota Aeronautics Commission
(701) 328-9651

FOR IMMEDIATE RELEASE

ND Airports Work Through Winter Weather to Maintain Flight Schedules

North Dakota's eight commercial service airports posted a total of 83,999 airline passenger boardings during the recent month of November. This is a growth of 570 passengers or a 1% increase from November of last year. It is also 12% below 2019's pre-pandemic airline boarding counts for the same time period.

North Dakota's cold winter climate makes air travel both attractive and vital for our state's economy and overall standard of living. Air transportation allows for safe and efficient long-range travel to occur while helping to minimize the time spent on roadways.

Major weather events can, however, still result in short term impacts to our airports and airline partners. The storm in early November that brought snow and ice to large portions of the state resulted in airline cancellations at multiple airports. Additional impacts in December can also be anticipated from the winter storm that recently swept across the region. These significant weather events have the ability to negatively impact the overall passenger numbers reported from each airport.

In spite of the winter challenges, four of the commercial service airports reported higher passenger numbers than in November of last year. The Hector International Airport in Fargo was also able to report its best November on record with 38,014 total passengers which is .3% higher than the previous record which was set in November of 2021.

"The recent weather events have created challenges; however, our airports are equipped to handle harsh winter conditions." stated Kyle Wanner, Executive Director of the North Dakota Aeronautics Commission. "Airport and airline personnel will continue to work hard throughout the winter months to minimize airline cancellations or delays and maintain flight schedules as best possible."



November Boardings Comparison of Commercial Service Airports

Prepared by: N.D. Aeronautics Commission

	2022	2021	2020	2019	2018	2017	2016	2015	2014	2013	Difference 2022/2021	% Change	Difference 2022/2019	% Change
Bismarck	18,285	18,610	11,059	23,821	24,022	22,148	24,283	21,178	21,924	18,088	-325	-1.75%	-5,536	-23.24%
Devils Lake	606	622	287	586	580	523	470	373	362	181	-16	-2.57%	20	3.41%
Dickinson	1,909	1,646	871	1,938	1,943	1,644	1,418	3,095	5,289	4,191	263	15.98%	-29	-1.50%
Fargo	38,014	37,911	17,766	37,823	35,683	31,404	31,086	29,640	33,583	30,199	103	0.27%	191	0.50%
Grand Forks	6,982	6,349	3,453	9,735	10,095	9,488	10,260	11,356	11,959	12,249	633	9.97%	-2,753	-28.28%
Jamestown	800	993	399	865	851	1,051	932	703	602	224	-193	-19.44%	-65	-7.51%
Minot	10,983	11,679	7,055	13,613	12,365	11,420	12,424	14,502	18,360	18,556	-696	-5.96%	-2,630	-19.32%
Williston	6,420	5,619	1,978	6,945	6,340	5,836	5,689	7,291	10,438	8,973	801	14.26%	-525	-7.56%
TOTALS	83,999	83,429	42,868	95,326	91,879	83,514	86,562	88,138	102,517	92,661	570	0.68%	-11,327	-11.88%



YTD Boardings Comparison of Commercial Service Airports

Through November

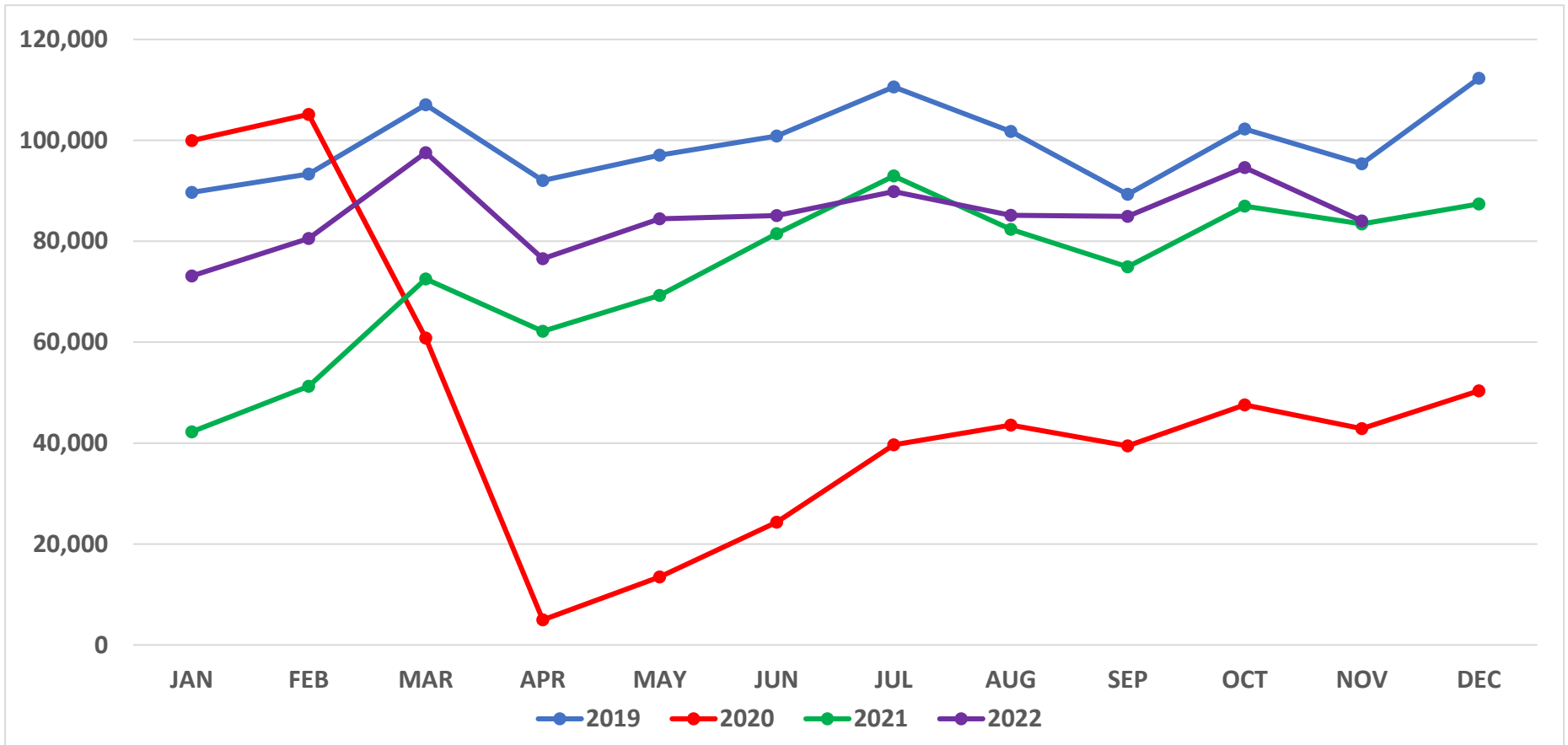
Prepared by: N.D. Aeronautics Commission

19-Dec-22

	YTD 2022	YTD 2021	YTD 2020	YTD 2019	YTD 2018	YTD 2017	YTD 2016	YTD 2015	YTD 2014	YTD 2013	Difference	% Change
Bismarck	220,545	192,874	135,624	280,328	255,509	248,968	246,138	234,655	219,708	215,191	27,671	14.35%
Devils Lake	6,383	5,900	3,488	6,317	6,052	6,104	5,743	4,164	2,142	2,417	483	8.19%
Dickinson	20,057	15,273	10,443	21,403	20,335	16,975	15,127	39,964	53,746	31,199	4,784	31.32%
Fargo	411,902	359,259	218,688	425,312	385,768	358,733	360,773	395,202	410,905	362,343	52,643	14.65%
Grand Forks	79,229	62,079	42,592	105,038	102,302	104,015	117,209	130,183	130,026	133,959	17,150	27.63%
Jamestown	10,403	9,929	5,051	10,056	10,901	11,941	10,283	7,100	2,818	2,458	474	4.77%
Minot	126,206	112,685	76,562	150,270	137,750	130,150	139,081	166,954	201,379	201,255	13,521	12.00%
Williston	61,026	41,438	29,288	80,561	67,371	62,569	62,395	99,677	108,038	85,315	19,588	47.27%
TOTALS	935,751	799,437	521,736	1,079,285	985,988	939,455	956,749	1,077,899	1,128,762	1,034,137	136,314	17.05%
Commercial (BIS-FAR-GFK-MOT-WIL)	898,908	768,335	502,754	1,041,509	948,700	904,435	925,596	1,026,671	1,070,056	998,063	130,573	16.99%
Regional (DVL-DIK-JMS)	36,843	31,102	18,982	37,776	37,288	35,020	31,153	51,228	58,706	36,074	5,741	18.46%



North Dakota Airline Passenger Boarding Trends (2019 - 2022)

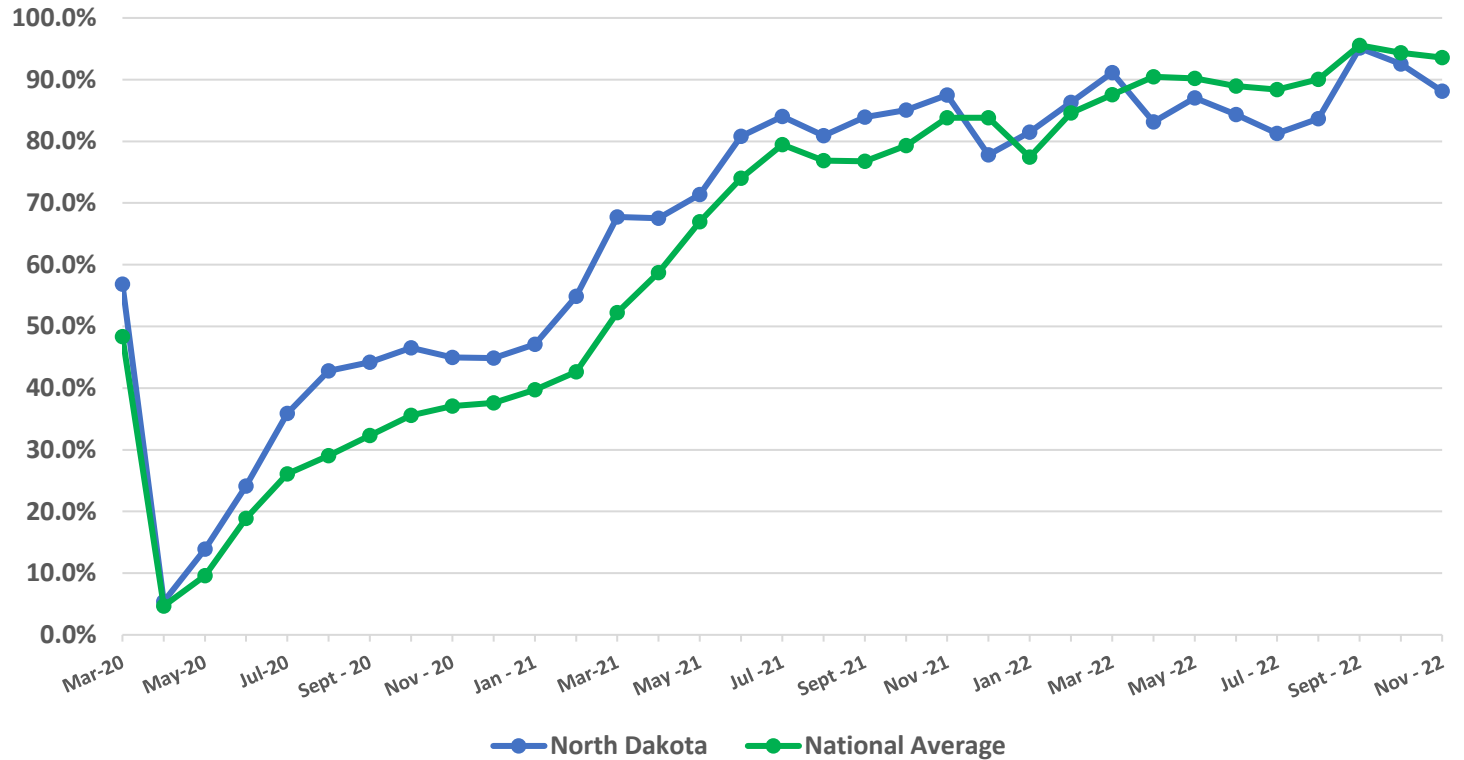




Airline Enplanement Monthly Retention Rates North Dakota versus National Average *(Comparing each month to the same month in 2019)*

ND vs. TSA Enplanement Retention

Month	ND	TSA
Mar-20	56.8%	48.3%
Apr-20	5.4%	4.7%
May-20	13.9%	9.6%
Jun-20	24.1%	18.9%
Jul-20	35.9%	26.1%
Aug-20	42.8%	29.0%
Sept - 20	44.2%	32.3%
Oct - 20	46.5%	35.6%
Nov - 20	45.0%	37.1%
Dec - 20	44.8%	37.6%
Jan - 21	47.1%	39.7%
Feb - 21	54.9%	42.6%
Mar-21	67.7%	52.2%
Apr - 21	67.5%	58.7%
May - 21	71.4%	67.0%
Jun - 21	80.8%	74.0%
Jul - 21	84.0%	79.5%
Aug - 21	80.9%	76.9%
Sept - 21	83.9%	76.8%
Oct - 21	85.0%	79.3%
Nov - 21	87.5%	83.8%
Dec - 21	77.8%	83.8%
Jan - 22	81.5%	77.4%
Feb - 22	86.3%	84.6%
Mar - 22	91.2%	87.6%
Apr - 22	83.2%	90.5%
May - 22	87.0%	90.2%
Jun - 22	84.3%	89.0%
Jul - 22	81.3%	88.4%
Aug - 22	83.7%	90.1%
Sept - 22	95.1%	95.6%
Oct - 22	92.5%	94.4%
Nov - 22	88.1%	93.6%



National statistics were retrieved from TSA website: <https://www.tsa.gov/coronavirus/passenger-throughput>