



## May Boardings Comparison of Commercial Service Airports

	2023	2022	2021	2020	2019	2018	2017	2016	2015	2014	Difference 2023/2022	% Change	Difference 2023/2019	% Change
Bismarck	20,712	20,418	17,656	4,222	26,066	23,273	22,028	21,265	20,460	19,880	294	1.44%	-5354	-20.54%
Devils Lake	657	518	496	64	548	520	466	466	423	0	139	26.83%	109	19.89%
Dickinson	2,183	1,851	1,502	268	2,088	1,912	1,712	1,327	3,828	5,092	332	17.94%	95	4.55%
Fargo	40,969	35,607	29,503	5,190	37,796	32,088	30,412	29,976	34,561	35,077	5,362	15.06%	3173	8.40%
Grand Forks	7,369	7,706	5,389	334	8,742	8,776	8,722	9,781	11,252	12,428	(337)	-4.37%	-1373	-15.71%
Jamestown	1,009	934	924	179	839	1,122	1,176	945	502	0	75	8.03%	170	20.26%
Minot	12,341	12,504	11,046	1,966	13,122	12,885	12,015	12,223	13,614	18,813	(163)	-1.30%	-781	-5.95%
Williston	6,214	4,936	2,769	1,251	7,868	6,509	5,833	5,628	9,638	9,099	1,278	25.89%	-1654	-21.02%
<b>TOTALS</b>	<b>91,454</b>	<b>84,474</b>	<b>69,285</b>	<b>13,474</b>	<b>97,069</b>	<b>87,085</b>	<b>82,364</b>	<b>81,611</b>	<b>94,278</b>	<b>100,389</b>	<b>6,980</b>	<b>8.26%</b>	<b>-5615</b>	<b>-5.78%</b>



# YTD Boardings Comparison of Commercial Service Airports

Through May

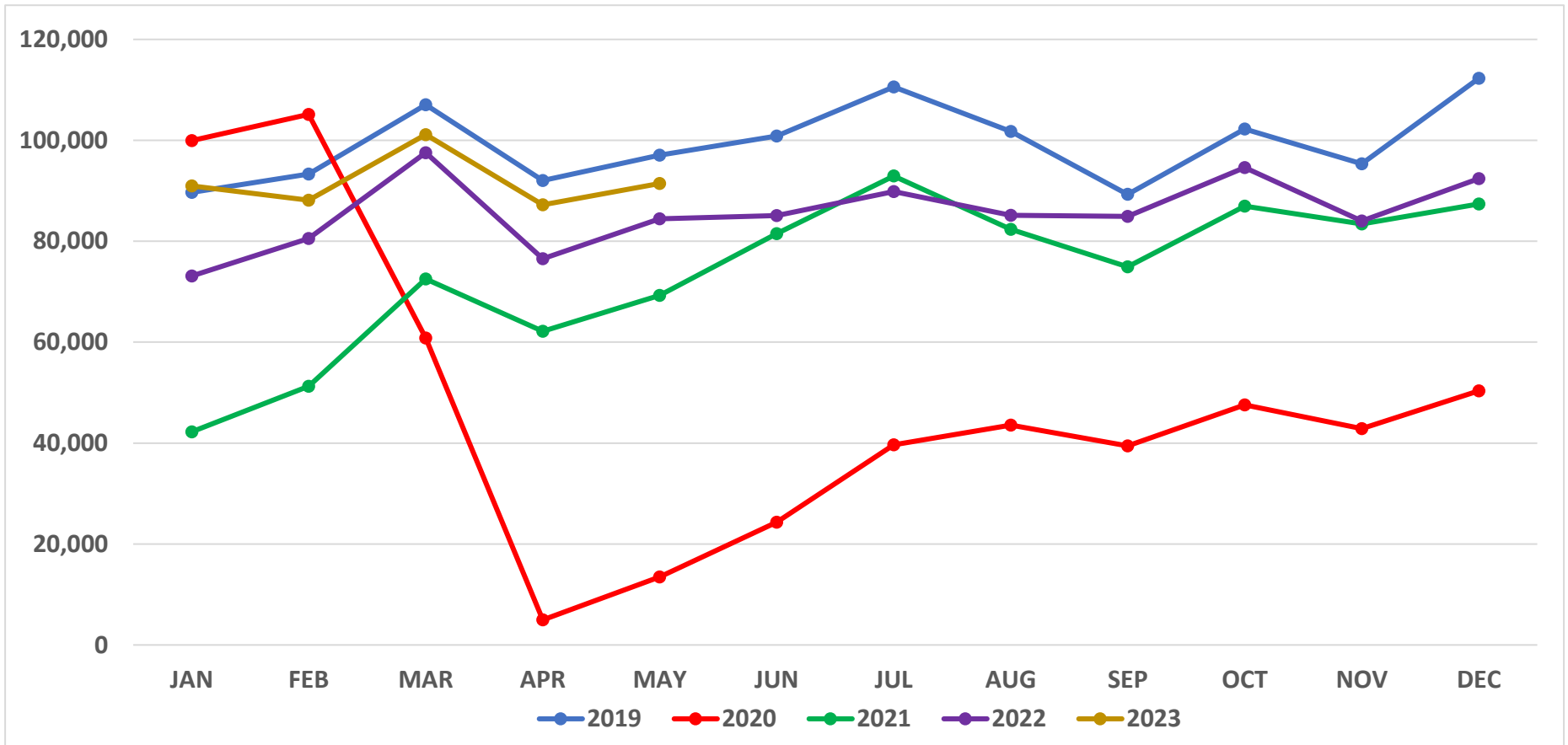
Prepared by: N.D. Aeronautics Commission

21-Jun-23

	YTD 2023	YTD 2022	YTD 2021	YTD 2020	YTD 2019	YTD 2018	YTD 2017	YTD 2016	YTD 2015	YTD 2014	Difference	% Change
Bismarck	100,518	96,439	75,220	71,709	124,561	109,428	107,475	106,192	102,173	95,602	<b>4,079</b>	<b>4.23%</b>
Devils Lake	2,756	2,661	2,076	1,605	2,447	2,468	2,795	2,431	1,686	177	<b>95</b>	<b>3.57%</b>
Dickinson	9,685	8,109	4,656	5,638	8,878	8,382	7,169	6,601	18,683	20,681	<b>1,576</b>	<b>19.44%</b>
Fargo	214,414	184,128	132,142	120,865	190,863	174,801	166,963	163,783	185,455	189,756	<b>30,286</b>	<b>16.45%</b>
Grand Forks	41,267	40,062	25,427	25,432	48,781	46,013	49,225	57,917	62,440	64,698	<b>1,205</b>	<b>3.01%</b>
Jamestown	4,021	4,901	3,455	2,634	4,177	4,983	5,372	4,323	2,928	135	<b>(880)</b>	<b>-17.96%</b>
Minot	58,847	55,684	42,503	36,824	65,489	61,560	57,291	63,552	79,278	91,340	<b>3,163</b>	<b>5.68%</b>
Williston	27,446	20,273	11,956	19,621	34,009	28,740	27,157	27,412	49,330	46,099	<b>7,173</b>	<b>35.38%</b>
<b>TOTALS</b>	<b>458,954</b>	<b>412,257</b>	<b>297,435</b>	<b>284,328</b>	<b>479,205</b>	<b>436,375</b>	<b>423,447</b>	<b>432,211</b>	<b>501,973</b>	<b>508,488</b>	<b>46,697</b>	<b>11.33%</b>
Commercial (BIS-FAR-GFK-MOT-WIL)	442,492	396,586	287,248	274,451	463,703	420,542	408,111	418,856	478,676	487,495	<b>45,906</b>	<b>11.58%</b>
Regional (DVL-DIK-JMS)	16,462	15,671	10,187	9,877	15,502	15,833	15,336	13,355	23,297	20,993	<b>791</b>	<b>5.05%</b>



## North Dakota Airline Passenger Boarding Trends (2019 - 2023)

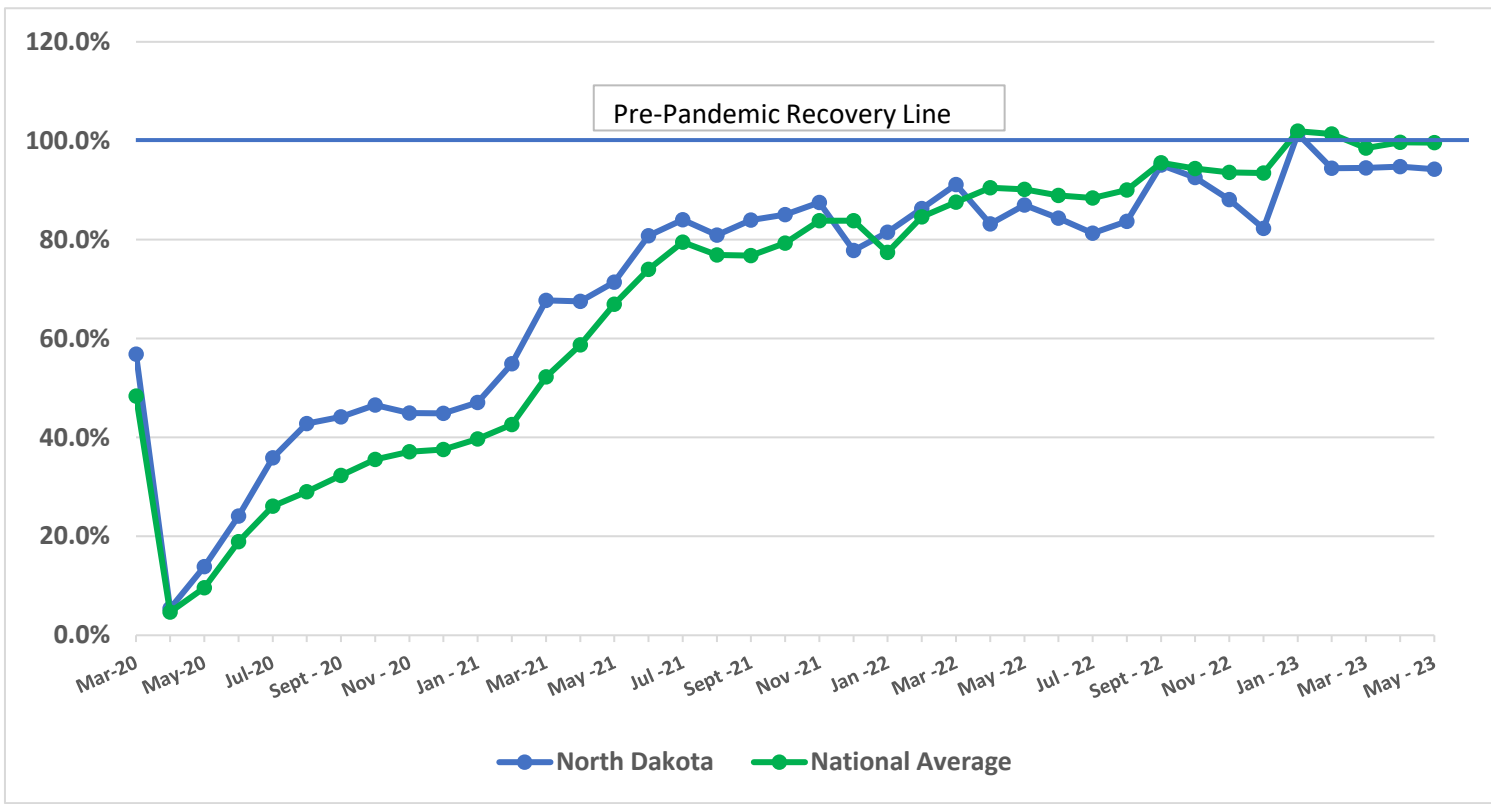




## Airline Enplanement Monthly Retention Rates North Dakota versus National Average *(Comparing each month to the same month in 2019)*

**ND vs. TSA Enplanement Retention**

Month	ND	TSA
Mar-20	56.8%	48.3%
Apr-20	5.4%	4.7%
May-20	13.9%	9.6%
Jun-20	24.1%	18.9%
Jul-20	35.9%	26.1%
Aug-20	42.8%	29.0%
Sept - 20	44.2%	32.3%
Oct - 20	46.5%	35.6%
Nov - 20	45.0%	37.1%
Dec - 20	44.8%	37.6%
Jan - 21	47.1%	39.7%
Feb - 21	54.9%	42.6%
Mar-21	67.7%	52.2%
Apr - 21	67.5%	58.7%
May - 21	71.4%	67.0%
Jun - 21	80.8%	74.0%
Jul - 21	84.0%	79.5%
Aug - 21	80.9%	76.9%
Sept - 21	83.9%	76.8%
Oct - 21	85.0%	79.3%
Nov - 21	87.5%	83.8%
Dec - 21	77.8%	83.8%
Jan - 22	81.5%	77.4%
Feb - 22	86.3%	84.6%
Mar - 22	91.2%	87.6%
Apr - 22	83.2%	90.5%
May - 22	87.0%	90.2%
Jun - 22	84.3%	89.0%
Jul - 22	81.3%	88.4%
Aug - 22	83.7%	90.1%
Sept - 22	95.1%	95.6%
Oct - 22	92.5%	94.4%
Nov - 22	88.1%	93.6%
Dec - 22	82.3%	93.5%
Jan - 23	101.4%	101.9%
Feb - 23	94.4%	101.4%
Mar - 23	94.5%	98.5%
Apr - 23	94.7%	99.7%
May - 23	94.2%	99.6%



National statistics were retrieved from TSA website: <https://www.tsa.gov/coronavirus/passenger-throughput>