



April 21st, 2022

Kyle C. Wanner, Executive Director
North Dakota Aeronautics Commission
(701) 328-9651

FOR IMMEDIATE RELEASE

March Airline Boardings Showcase Strong North Dakota Passenger Demand

North Dakota's eight commercial service airports posted a total of 97,561 airline passenger boardings during the month of March which is a 35% increase in passengers from March 2021.

This month also brought the state's highest level of airline passenger traffic that has been experienced over a monthly timeframe over the last two years. The pre-pandemic month of February 2020 was the last time that the state posted a higher monthly passenger count. Multiple airports within the state have now surpassed or are very close to reaching pre-pandemic passenger demand levels.

North Dakota also continues to trend above the national average when looking at the overall pre-pandemic airline passenger recovery rate and the state is currently only 9% below the passenger counts experienced in March of 2019. Passenger demand throughout the country has continued to stay strong in the domestic leisure market, however the business and international travel sectors are still suffering from COVID-19 impacts.

"It is exciting news to see the highest monthly airline passenger count in two years," stated Kyle Wanner, Executive Director of the North Dakota Aeronautics Commission. "These recent passenger numbers help to showcase the continual resiliency and positive recovery in demand for air transportation services within North Dakota. We also expect that this demand for air service should remain elevated going into the summer months, particularly in the leisure sector of the travel market."



March Boardings Comparison of Commercial Service Airports

Prepared by: N.D. Aeronautics Commission

	MAR 2022	MAR 2021	MAR 2020	MAR 2019	MAR 2018	MAR 2017	MAR 2016	MAR 2015	MAR 2014	MAR 2013	Difference 2022/2021	% Change	Difference 2022/2019	% Change
Bismarck	22,423	18,217	14,453	27,623	22,293	23,204	23,324	21,200	20,378	22,162	4,206	23.09%	-5,200	-18.82%
Devils Lake	665	508	357	466	533	633	566	370	0	154	157	30.91%	199	42.70%
Dickinson	1,740	685	1,182	1,579	1,614	1,384	1,245	3,698	3,923	1,491	1,055	154.01%	161	10.20%
Fargo	43,306	33,492	25,618	42,630	40,169	39,422	36,953	42,068	44,222	40,054	9,814	29.30%	676	1.59%
Grand Forks	10,803	6,528	5,998	11,798	10,367	11,539	14,317	15,191	16,405	15,759	4,275	65.49%	-995	-8.43%
Jamestown	1,282	830	590	958	1,028	1,266	962	678	0	227	452	54.46%	324	33.82%
Minot	12,903	9,822	8,218	15,107	14,039	12,460	14,928	18,253	19,991	18,871	3,081	31.37%	-2,204	-14.59%
Williston	4,439	2,422	4,405	6,868	5,764	5,794	5,232	9,627	9,872	7,492	2,017	83.28%	-2,429	-35.37%
TOTALS	97,561	72,504	60,821	107,029	95,807	95,702	97,527	111,085	114,791	106,210	25,057	34.56%	-9,468	-8.85%



YTD Boardings Comparison of Commercial Service Airports

Through March

Prepared by: N.D. Aeronautics Commission

19-Apr-22

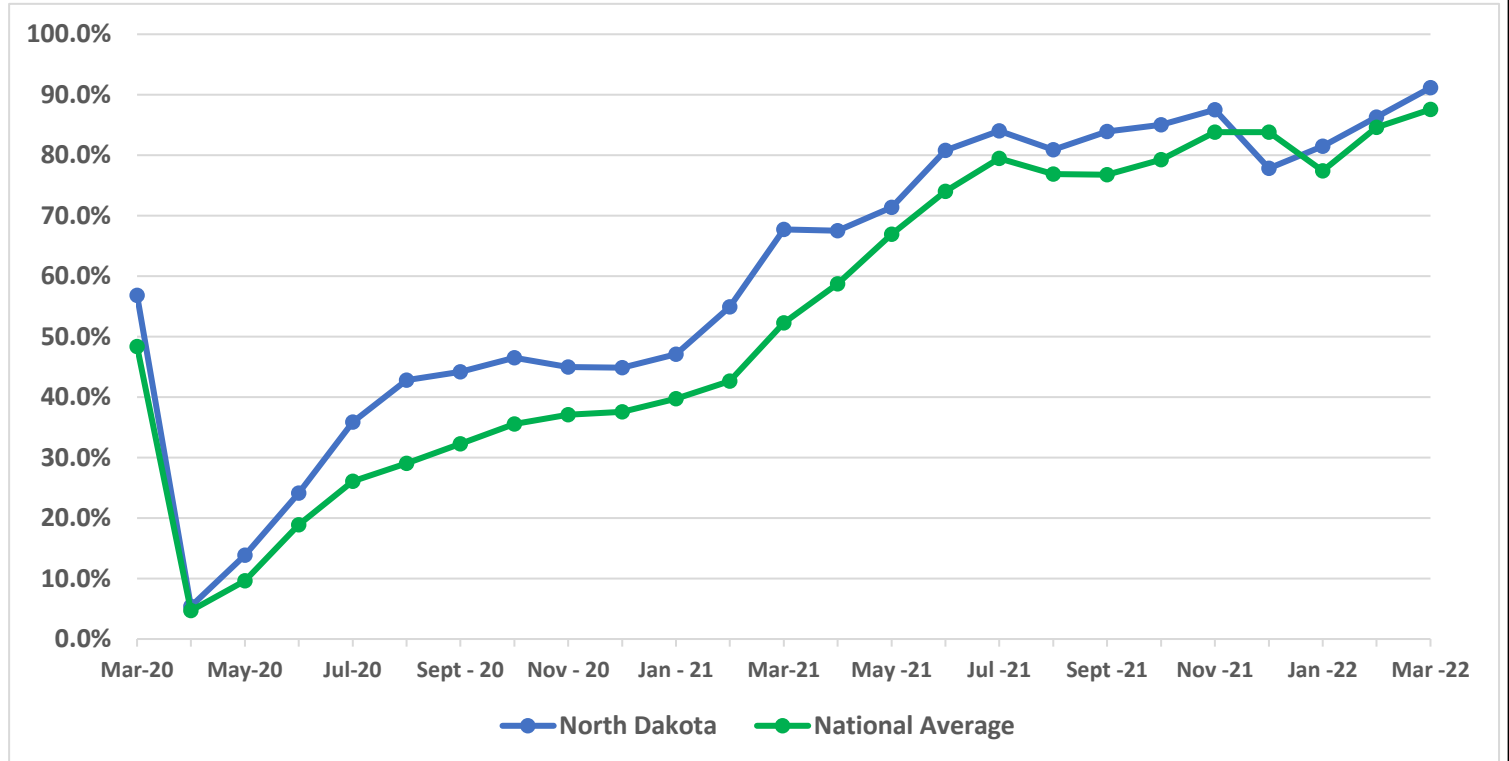
	YTD 2022	YTD 2021	YTD 2020	YTD 2019	YTD 2018	YTD 2017	YTD 2016	YTD 2015	YTD 2014	YTD 2013	Difference	% Change
Bismarck	57,821	42,055	66,274	73,805	63,787	64,264	65,026	62,728	58,938	61,196	15,766	37.49%
Devils Lake	1,605	1,081	1,527	1,395	1,529	1,777	1,568	985	177	594	524	48.47%
Dickinson	4,766	1,872	5,217	4,982	4,876	3,965	4,087	11,006	11,388	4,216	2,894	154.59%
Fargo	114,785	75,520	114,120	117,665	110,846	107,649	105,278	116,441	119,989	107,572	39,265	51.99%
Grand Forks	24,716	14,794	24,719	30,693	29,099	31,996	37,372	39,565	40,297	39,655	9,922	67.07%
Jamestown	3,014	1,764	2,414	2,644	2,984	3,327	2,726	1,970	135	635	1,250	70.86%
Minot	33,031	22,342	34,057	39,624	36,369	34,239	39,728	50,640	54,652	54,094	10,689	47.84%
Williston	11,492	6,554	17,562	19,265	16,421	15,797	16,498	29,542	27,342	20,154	4,938	75.34%
TOTALS	251,230	165,982	265,890	290,073	265,911	263,014	272,283	312,877	312,918	288,116	85,248	51.36%
Commercial (BIS-FAR-GFK-MOT-WIL)	241,845	161,265	256,732	281,052	256,522	253,945	263,902	298,916	301,218	282,671	80,580	49.97%
Regional (DVL-DIK-JMS)	9,385	4,717	9,158	9,021	9,389	9,069	8,381	13,961	11,700	5,445	4,668	98.96%



Airline Enplanement Monthly Retention Rates North Dakota versus National Average *(Comparing each month to the same month in 2019)*

ND vs. TSA Enplanement Retention

Month	ND	TSA
Mar-20	56.8%	48.3%
Apr-20	5.4%	4.7%
May-20	13.9%	9.6%
Jun-20	24.1%	18.9%
Jul-20	35.9%	26.1%
Aug-20	42.8%	29.0%
Sept - 20	44.2%	32.3%
Oct - 20	46.5%	35.6%
Nov - 20	45.0%	37.1%
Dec - 20	44.8%	37.6%
Jan - 21	47.1%	39.7%
Feb -21	54.9%	42.6%
Mar-21	67.7%	52.2%
Apr -21	67.5%	58.7%
May -21	71.4%	67.0%
Jun -21	80.8%	74.0%
Jul -21	84.0%	79.5%
Aug -21	80.9%	76.9%
Sept -21	83.9%	76.8%
Oct -21	85.0%	79.3%
Nov -21	87.5%	83.8%
Dec -21	77.8%	83.8%
Jan -22	81.5%	77.4%
Feb -22	86.3%	84.6%
Mar -22	91.2%	87.6%



National statistics were retrieved from TSA website: <https://www.tsa.gov/coronavirus/passenger-throughput>