



June Boardings Comparison of Commercial Service Airports

	2023	2022	2021	2020	2019	2018	2017	2016	2015	2014	Difference 2023/2022	% Change	Difference 2023/2019	% Change
Bismarck	22,130	21,631	20,244	7,833	26,531	24,570	24,607	22,354	21,478	19,962	499	2.31%	-4401	-16.59%
Devils Lake	792	596	587	181	564	551	652	605	408	261	196	32.89%	228	40.43%
Dickinson	1,955	1,834	1,735	579	2,057	1,920	1,671	1,334	3,742	5,116	121	6.60%	-102	-4.96%
Fargo	40,174	36,552	36,715	9,005	40,003	34,897	32,670	32,987	36,359	37,019	3,622	9.91%	171	0.43%
Grand Forks	7,246	6,502	5,576	1,232	9,123	8,648	9,036	10,255	11,381	10,026	744	11.44%	-1877	-20.57%
Jamestown	931	1,015	1,088	251	957	1,073	1,220	999	671	306	(84)	-8.28%	-26	-2.72%
Minot	11,479	11,373	12,033	3,912	13,632	12,796	12,469	12,063	14,186	17,735	106	0.93%	-2153	-15.79%
Williston	6,301	5,562	3,411	1,320	8,009	6,273	5,865	5,826	8,942	9,642	739	13.29%	-1708	-21.33%
Totals	91,008	85,065	81,389	24,313	100,876	90,728	88,190	86,423	97,167	100,067	5,943	6.99%	-9868	-9.78%



YTD Boardings Comparison of Commercial Service Airports

Through June

Prepared by: N.D. Aeronautics Commission

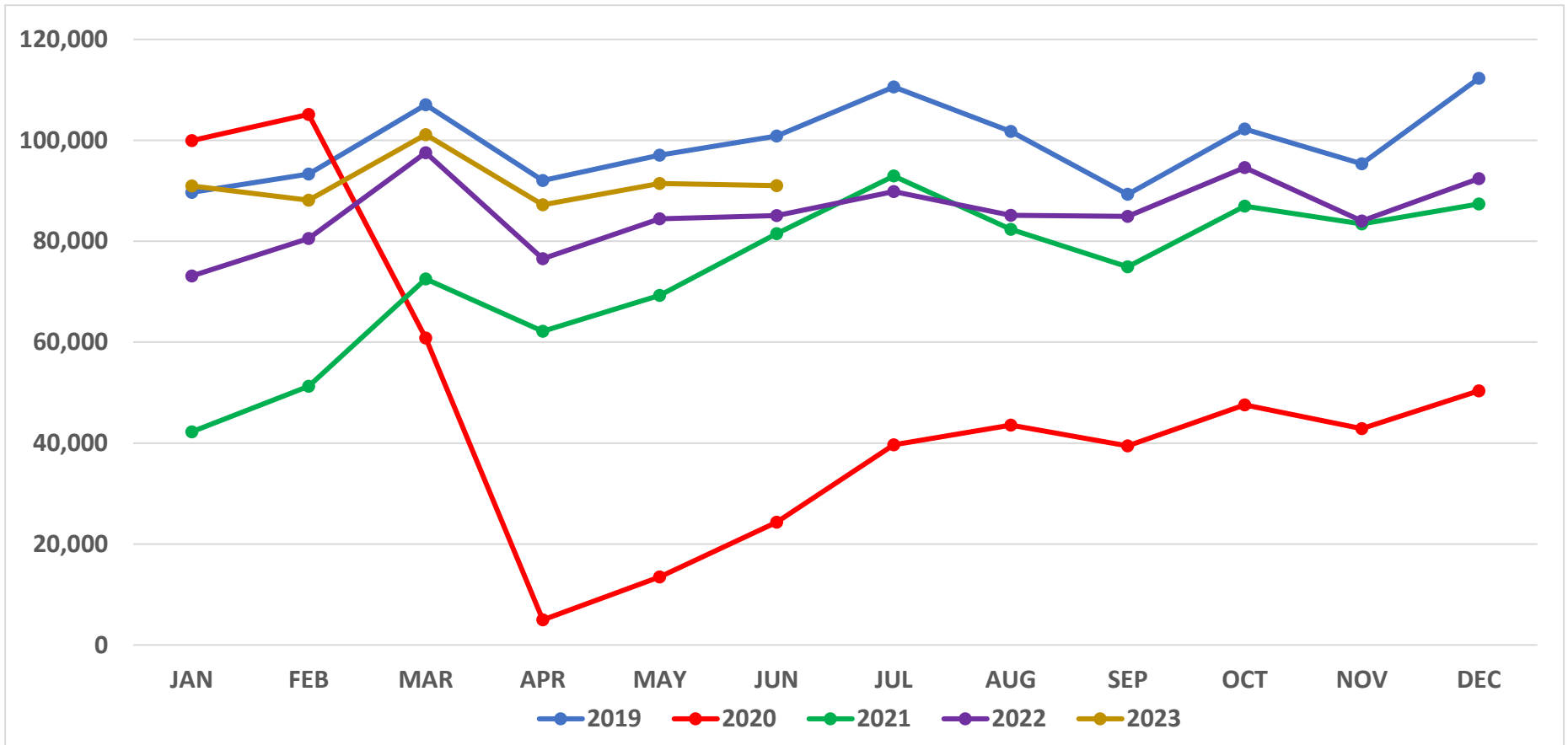
17-Jul-23

	YTD 2023	YTD 2022	YTD 2021	YTD 2020	YTD 2019	YTD 2018	YTD 2017	YTD 2016	YTD 2015	YTD 2014	Difference	% Change
Bismarck	122,648	118,070	95,464	79,542	151,092	133,998	132,082	128,546	123,651	115,564	4,578	3.88%
Devils Lake	3,548	3,257	2,663	1,786	3,011	3,019	3,447	3,036	2,094	438	291	8.93%
Dickinson	11,640	9,943	6,391	6,217	10,935	10,302	8,840	7,935	22,425	25,797	1,697	17.07%
Fargo	254,588	220,680	168,857	129,870	230,866	209,698	199,633	196,770	221,814	226,775	33,908	15.37%
Grand Forks	48,513	46,564	31,003	26,664	57,904	54,661	58,261	68,172	73,821	74,724	1,949	4.19%
Jamestown	4,952	5,916	4,543	2,885	5,134	6,056	6,592	5,322	3,599	441	(964)	-16.29%
Minot	70,326	67,057	54,536	40,736	79,121	74,356	69,760	75,615	93,464	109,075	3,269	4.87%
Williston	33,747	25,835	15,367	20,941	42,018	35,013	33,022	33,238	58,272	55,741	7,912	30.63%
TOTALS	549,962	497,322	378,824	308,641	580,081	527,103	511,637	518,634	599,140	608,555	52,640	10.58%
Commercial (BIS-FAR-GFK-MOT-WIL)	529,822	478,206	365,227	297,753	561,001	507,726	492,758	502,341	571,022	581,879	51,616	10.79%
Regional (DVL-DIK-JMS)	20,140	19,116	13,597	10,888	19,080	19,377	18,879	16,293	28,118	26,676	1,024	5.36%



North Dakota Airline Passenger Boarding Trends

(2019 - 2023)

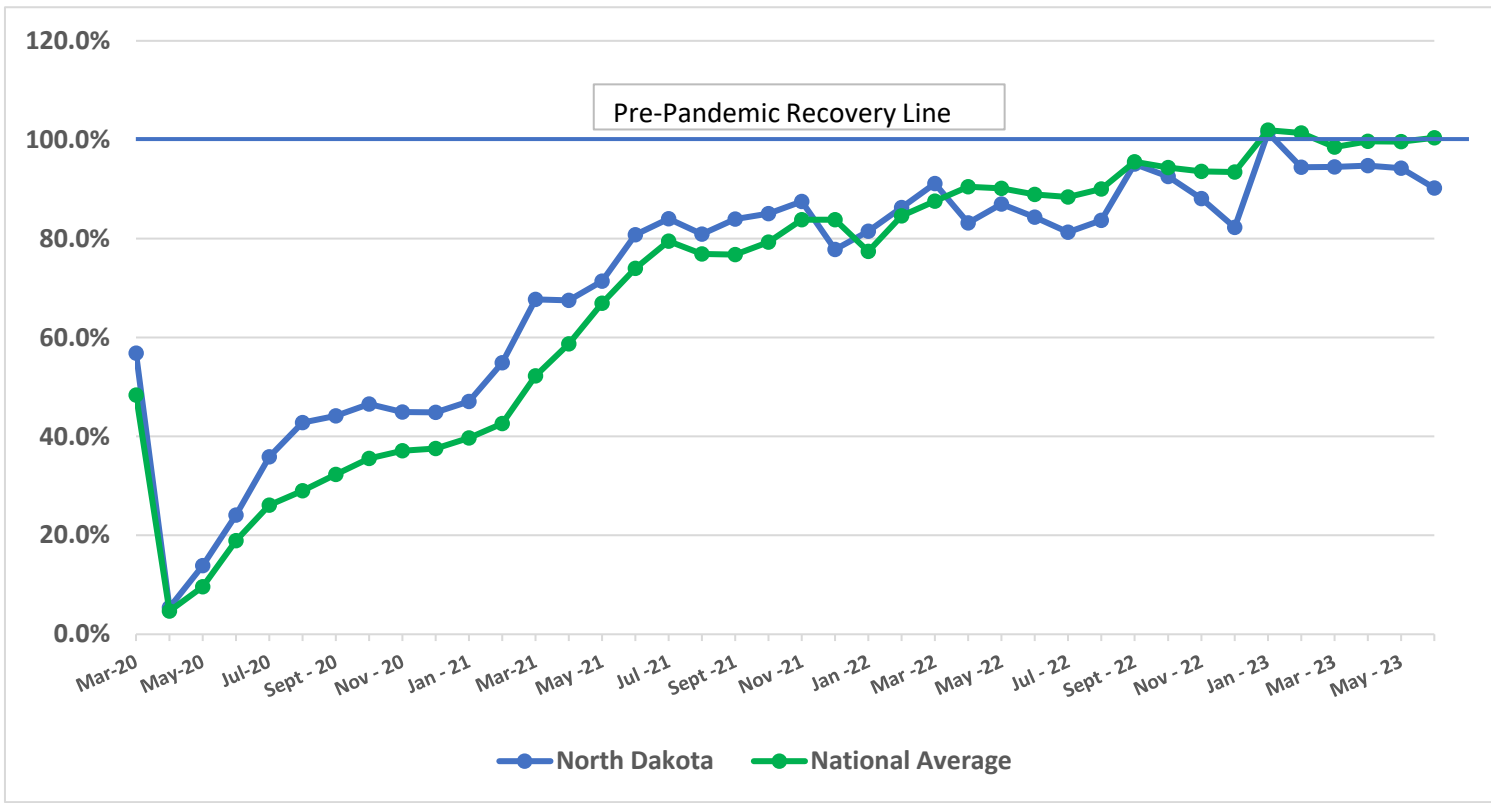




Airline Enplanement Monthly Retention Rates North Dakota versus National Average *(Comparing each month to the same month in 2019)*

ND vs. TSA Enplanement Retention

Month	ND	TSA
Mar-20	56.8%	48.3%
Apr-20	5.4%	4.7%
May-20	13.9%	9.6%
Jun-20	24.1%	18.9%
Jul-20	35.9%	26.1%
Aug-20	42.8%	29.0%
Sept -20	44.2%	32.3%
Oct -20	46.5%	35.6%
Nov -20	45.0%	37.1%
Dec -20	44.8%	37.6%
Jan -21	47.1%	39.7%
Feb -21	54.9%	42.6%
Mar-21	67.7%	52.2%
Apr-21	67.5%	58.7%
May-21	71.4%	67.0%
Jun -21	80.8%	74.0%
Jul -21	84.0%	79.5%
Aug -21	80.9%	76.9%
Sept -21	83.9%	76.8%
Oct -21	85.0%	79.3%
Nov -21	87.5%	83.8%
Dec -21	77.8%	83.8%
Jan -22	81.5%	77.4%
Feb -22	86.3%	84.6%
Mar -22	91.2%	87.6%
Apr -22	83.2%	90.5%
May -22	87.0%	90.2%
Jun -22	84.3%	89.0%
Jul -22	81.3%	88.4%
Aug -22	83.7%	90.1%
Sept -22	95.1%	95.6%
Oct -22	92.5%	94.4%
Nov -22	88.1%	93.6%
Dec -22	82.3%	93.5%
Jan -23	101.4%	101.9%
Feb -23	94.4%	101.4%
Mar -23	94.5%	98.5%
Apr -23	94.7%	99.7%
May -23	94.2%	99.6%
Jun -23	90.2%	100.4%



National statistics were retrieved from TSA website: <https://www.tsa.gov/coronavirus/passenger-throughput>