



August 22nd, 2022

Kyle C. Wanner, Executive Director
North Dakota Aeronautics Commission
(701) 328-9651

FOR IMMEDIATE RELEASE

Additional Airline Capacity is Required to Grow Passenger Numbers

North Dakota's eight commercial service airports posted a total of 89,865 airline passenger boardings during the recent month of July. This is a decline of 3,057 passengers or a 3.3% decrease in passenger numbers from July of 2021.

North Dakota's airline passenger counts are currently following a national trend where passenger growth over the last year has leveled to approximately 15% below 2019's pre-pandemic passenger counts. This is mainly a result of the limited seat capacity and flight departures that are currently available to the traveling public as those levels continue to remain below pre-pandemic levels. As shown in the table below, an estimated 111,039 total airline seats were available for purchase within the state of North Dakota during the recent month of July. This is a 16% decrease or an estimated 20,858 less seats than what was available in July of 2019.

Passenger demand remains elevated as many of the flights departing or returning to North Dakota are full or near full with the average aircraft load factor at an estimated 80%. As always, it is recommended to plan ahead and purchase tickets multiple weeks ahead of any planned trips to ensure that each traveler has an available seat.

North Dakota Airline Seat Availability Comparison of 2022 vs. 2019

Month	Available Seats 2019	Available Seats 2022	Seats Comparison (2022 vs. 2019)	Percentage Change
January	119,866	112,172	-7,694	-6%
February	116,581	108,676	-7,905	-7%
March	139,858	121,024	-18,834	-13%
April	132,257	106,643	-25,614	-19%
May	124,501	106,407	-18,094	-15%
June	128,530	108,003	-20,527	-16%
July	131,897	111,039	-20,858	-16%

Information has been retrieved from USDOT data provided via Airline Data Inc.

“Airlines continue to communicate hardships that prevent them from adding additional seat capacity into the system.” stated Kyle Wanner, Executive Director of the North Dakota Aeronautics Commission. “Passenger growth cannot occur when we don’t have the additional flights or the seats to accommodate that growth. We hope to see additional capacity being added back into the North Dakota system as the airline industry continues to re-prioritize the utilization of its fleet and works to improve its staffing issues.”



July Boardings Comparison of Commercial Service Airports

Prepared by: N.D. Aeronautics Commission

	July 2022	July 2021	July 2020	July 2019	July 2018	July 2017	July 2016	July 2015	July 2014	July 2013	Difference 2022/2021	% Change	Difference 2022/2019	% Change
Bismarck	22,158	22,209	11,274	28,876	25,789	27,245	24,085	23,652	21,688	20,038	-51	-0.23%	-6,718	-23.26%
Devils Lake	721	838	431	873	752	680	662	523	442	295	-117	-13.96%	-152	-17.41%
Dickinson	1,985	1,860	847	2,161	2,005	1,650	1,451	3,989	5,692	3,720	125	6.72%	-176	-8.14%
Fargo	39,734	42,871	16,219	43,437	38,760	35,291	35,950	41,255	41,980	37,895	-3,137	-7.32%	-3,703	-8.52%
Grand Forks	6,514	5,913	2,255	9,636	9,525	9,056	10,261	11,812	11,990	12,659	601	10.16%	-3,122	-32.40%
Jamestown	1,073	1,275	488	1,210	1,225	1,297	1,164	802	570	247	-202	-15.84%	-137	-11.32%
Minot	11,303	13,283	6,511	15,954	14,038	13,414	13,244	15,574	19,242	19,158	-1,980	-14.91%	-4,651	-29.15%
Williston	6,377	4,673	1,635	8,420	6,639	5,823	5,884	9,133	9,605	8,289	1,704	36.46%	-2,043	-24.26%
TOTALS	89,865	92,922	39,660	110,567	98,733	94,456	92,701	106,740	111,209	102,301	-3,057	-3.29%	-20,702	-18.72%



YTD Boardings Comparison of Commercial Service Airports

Through July

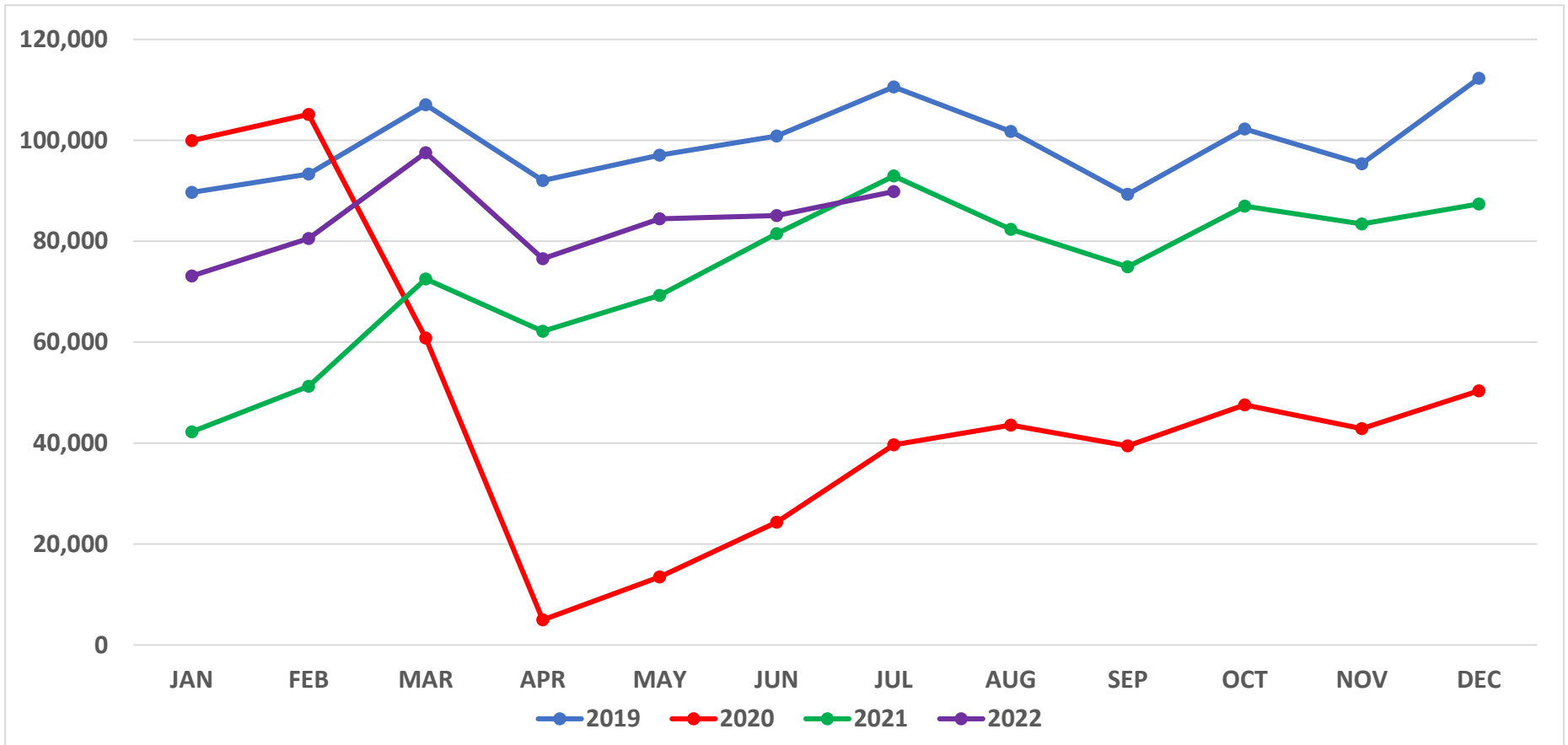
Prepared by: N.D. Aeronautics Commission

17-Aug-22

	YTD 2022	YTD 2021	YTD 2020	YTD 2019	YTD 2018	YTD 2017	YTD 2016	YTD 2015	YTD 2014	YTD 2013	Difference	% Change
Bismarck	140,228	117,673	90,816	179,968	159,787	159,327	152,631	147,303	137,252	140,604	22,555	19.17%
Devils Lake	3,978	3,501	2,217	3,884	3,771	4,127	3,698	2,617	880	1,499	477	13.62%
Dickinson	11,928	8,251	7,064	13,096	12,307	10,490	9,386	26,414	31,489	13,918	3,677	44.56%
Fargo	260,414	211,728	146,089	274,303	248,458	234,924	232,720	263,069	268,755	238,423	48,686	22.99%
Grand Forks	53,078	36,916	28,919	67,540	64,186	67,317	78,433	85,633	86,714	87,532	16,162	43.78%
Jamestown	6,989	5,818	3,373	6,344	7,281	7,889	6,486	4,401	1,011	1,468	1,171	20.13%
Minot	78,360	67,819	47,247	95,075	88,394	83,174	88,859	109,038	128,317	126,011	10,541	15.54%
Williston	32,212	20,040	22,576	50,438	41,652	38,845	39,122	67,405	65,346	51,018	12,172	60.74%
TOTALS	587,187	471,746	348,301	690,648	625,836	606,093	611,335	705,880	719,764	660,473	115,441	24.47%
Commercial (BIS-FAR-GFK-MOT-WIL)	564,292	454,176	335,647	667,324	602,477	583,587	591,765	672,448	686,384	643,588	110,116	24.25%
Regional (DVL-DIK-JMS)	22,895	17,570	12,654	23,324	23,359	22,506	19,570	33,432	33,380	16,885	5,325	30.31%



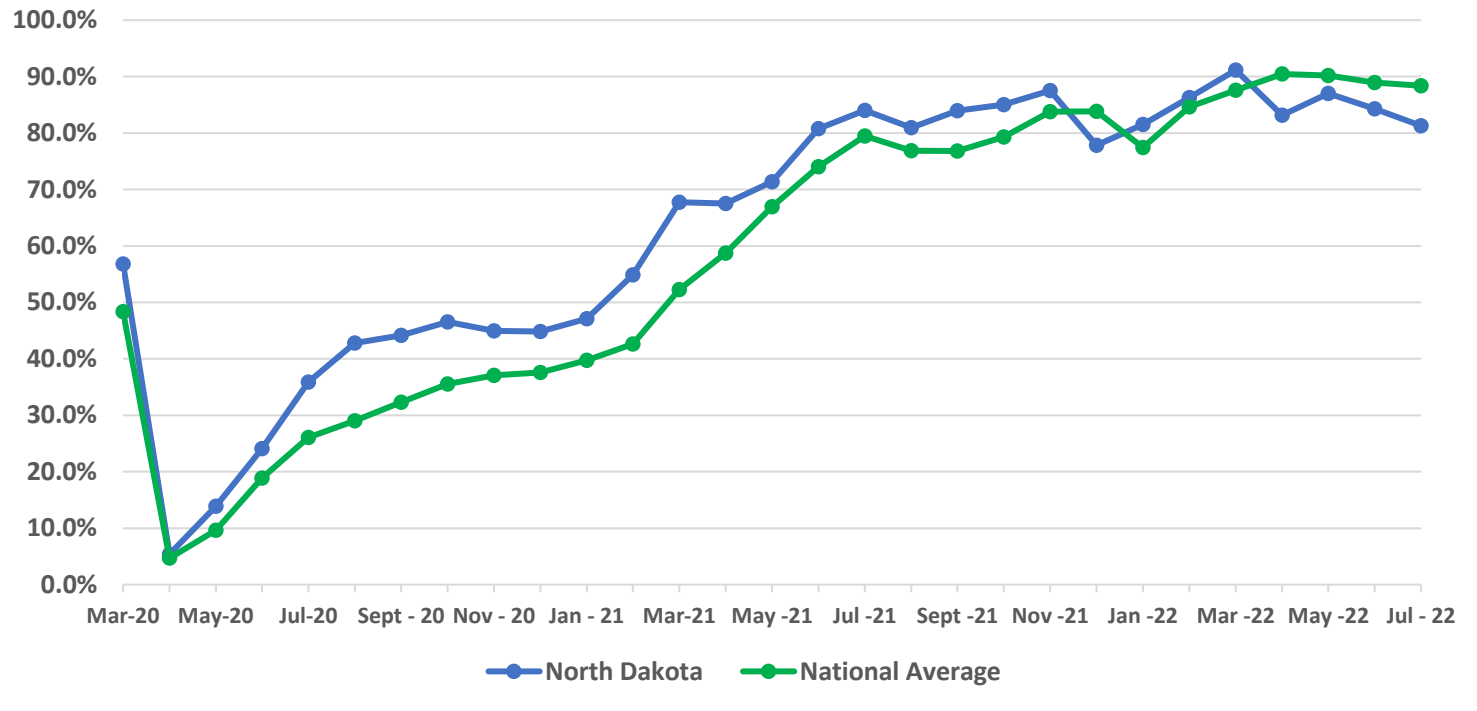
North Dakota Airline Passenger Boarding Trends (2019 - 2022)





Airline Enplanement Monthly Retention Rates North Dakota versus National Average *(Comparing each month to the same month in 2019)*

ND vs. TSA Enplanement Retention		
Month	ND	TSA
Mar-20	56.8%	48.3%
Apr-20	5.4%	4.7%
May-20	13.9%	9.6%
Jun-20	24.1%	18.9%
Jul-20	35.9%	26.1%
Aug-20	42.8%	29.0%
Sept - 20	44.2%	32.3%
Oct - 20	46.5%	35.6%
Nov - 20	45.0%	37.1%
Dec - 20	44.8%	37.6%
Jan - 21	47.1%	39.7%
Feb - 21	54.9%	42.6%
Mar-21	67.7%	52.2%
Apr - 21	67.5%	58.7%
May - 21	71.4%	67.0%
Jun - 21	80.8%	74.0%
Jul - 21	84.0%	79.5%
Aug - 21	80.9%	76.9%
Sept - 21	83.9%	76.8%
Oct - 21	85.0%	79.3%
Nov - 21	87.5%	83.8%
Dec - 21	77.8%	83.8%
Jan - 22	81.5%	77.4%
Feb - 22	86.3%	84.6%
Mar - 22	91.2%	87.6%
Apr - 22	83.2%	90.5%
May - 22	87.0%	90.2%
Jun - 22	84.3%	89.0%
Jul - 22	81.3%	88.4%



National statistics were retrieved from TSA website: <https://www.tsa.gov/coronavirus/passenger-throughput>