



January 19th, 2023

Kyle C. Wanner, Executive Director
North Dakota Aeronautics Commission
(701) 328-9651

FOR IMMEDIATE RELEASE

North Dakota Surpasses 1 Million Airline Boardings in 2022

North Dakota's commercial service airports finished calendar year 2022 with a statewide total of 1,028,159 airline passenger boardings. This is a growth of 141,350 passengers and a 16% overall increase from calendar year 2021. All eight commercial service airports were able to provide services to more passengers in 2022 than they did in the previous calendar year.

In 2022, the airports also tallied 1,023,816 passenger deplanements for a grand total of 2,051,975 passengers (enplanements and deplanements) that traveled through the commercial service terminal buildings of North Dakota over the past year.

Significant winter storm events that resulted in an increase in canceled flights throughout North Dakota in both November and December also impacted the numbers. Despite these impacts, the state was still able to successfully surpass 1 million passenger boardings for the year. This is an exciting milestone that has not occurred since the pre-pandemic year of 2019.

Airline boardings have been adversely affected since the beginning of the COVID-19 pandemic when the industry experienced a significant decline in passenger numbers beginning in March of 2020. That year, airline passenger demand dropped by over 50% and North Dakota recorded an annual total of 572,093 passenger boardings. Since that time, airline passenger demand has seen a remarkable recovery and the current data reveals that air travel demand remains strong in North Dakota.

The growth in passenger demand bolsters the justification for airlines to look to add more flights, destinations, and seat capacity to North Dakota's airports. Airlines, however; continue to cite challenges in their ability to upscale as they continue to grapple with a shortage of pilots and other aviation related jobs. The need for a growing aviation workforce will continue to create opportunities for our youth to consider a career in the aviation sector. Pilots, aircraft mechanics, and unmanned aircraft operators are just a few of the exciting career options that are projected to continue to be in high demand.

Despite all challenges, North Dakota continues to provide the public with a high level of air service availability as the state's airports provide the public with seven non-stop destinations and an additional three seasonal non-stop options. All eight of the commercial service airports in North Dakota also continue to provide their communities with reliable jet service.

“This past year was one of significant challenges for the aviation industry as it worked to accommodate a large recovery in passenger demand while simultaneously experiencing significant workforce shortages.” stated Kyle Wanner, Executive Director of the North Dakota Aeronautics Commission. “Amongst these challenges, North Dakota’s airline passenger demand is within reach of a full recovery to pre-pandemic levels. The success of this recovery showcases the resiliency of our state as well as the importance and heightened standard of living that air service opportunities provide to our citizens.”



YTD Boardings Comparison of Commercial Service Airports

Through December

Prepared by: N.D. Aeronautics Commission

19-Jan-23

	YTD 2022	YTD 2021	YTD 2020	YTD 2019	YTD 2018	YTD 2017	YTD 2016	YTD 2015	YTD 2014	YTD 2013	Difference	% Change
Bismarck	242,000	213,668	150,161	309,337	282,363	272,739	271,022	259,734	245,205	237,683	28,332	13.26%
Devils Lake	6,881	6,581	3,865	6,973	6,684	6,644	6,290	4,760	2,676	2,667	300	4.56%
Dickinson	21,607	17,369	11,368	23,901	22,592	18,938	16,795	41,846	58,843	35,277	4,238	24.40%
Fargo	455,512	399,172	238,508	471,333	422,190	392,889	395,614	429,251	448,848	398,677	56,340	14.11%
Grand Forks	87,491	66,785	46,410	114,627	112,027	114,707	128,847	142,639	142,782	146,068	20,706	31.00%
Jamestown	11,203	11,142	5,655	11,175	11,808	12,865	11,123	7,996	3,428	2,672	61	0.55%
Minot	137,369	125,762	84,601	165,988	151,658	143,172	151,706	182,872	222,144	222,083	11,607	9.23%
Williston	66,096	46,330	31,525	88,235	73,795	68,685	68,021	106,945	119,069	94,459	19,766	42.66%
TOTALS	1,028,159	886,809	572,093	1,191,569	1,083,117	1,030,639	1,049,418	1,176,043	1,242,995	1,139,586	141,350	15.94%
Commercial (BIS-FAR-GFK-MOT-WIL)	988,468	851,717	551,205	1,149,520	1,042,033	992,192	1,015,210	1,121,441	1,178,048	1,098,970	136,751	16.06%
Regional (DVL-DIK-JMS)	39,691	35,092	20,888	42,049	41,084	38,447	34,208	54,602	64,947	40,616	4,599	13.11%



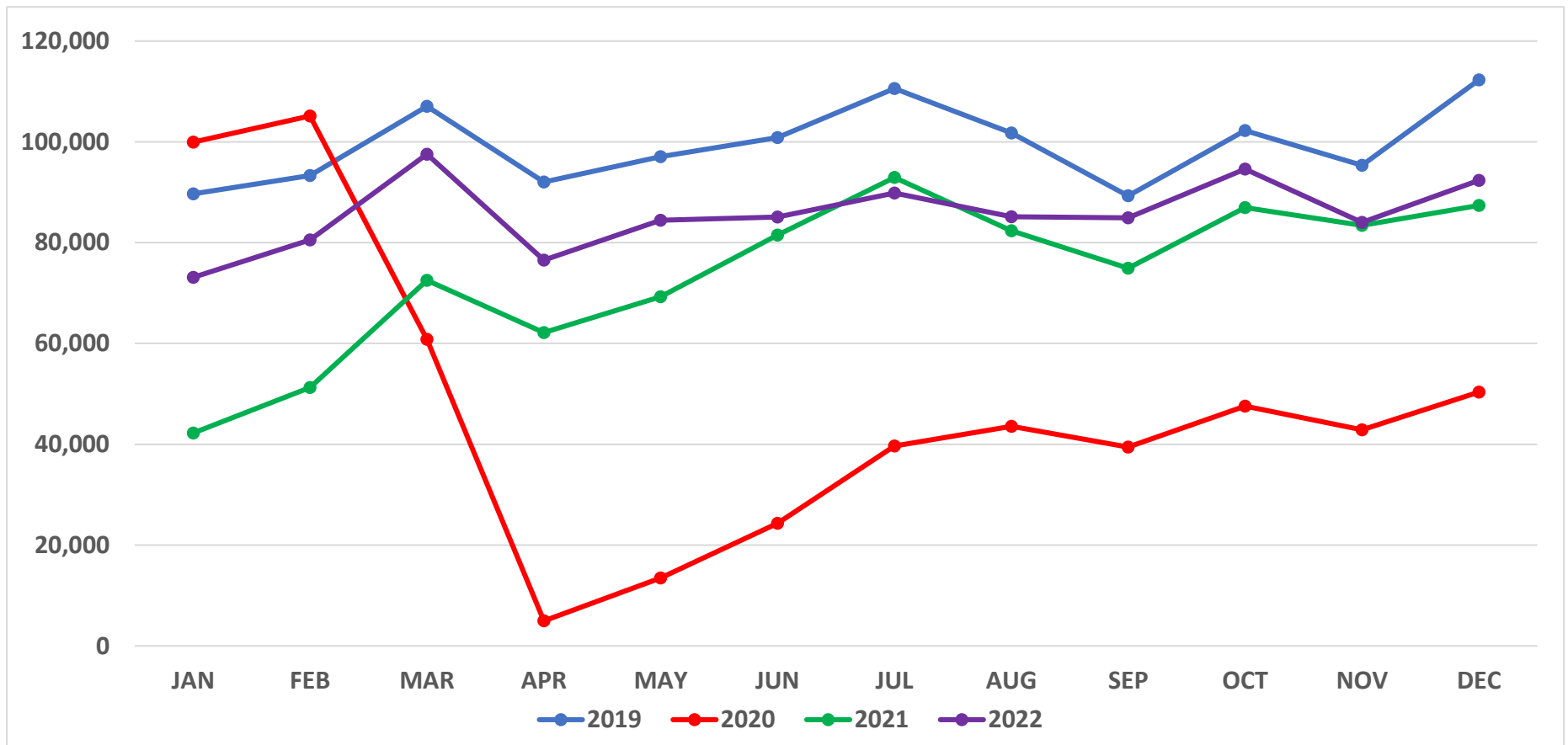
December Boardings Comparison of Commercial Service Airports

Prepared by: N.D. Aeronautics Commission

	2022	2021	2020	2019	2018	2017	2016	2015	2014	2013	Difference 2022/2021	% Change	Difference 2022/2019	% Change
Bismarck	21,455	20,794	14,537	29,009	26,854	23,771	24,884	25,079	25,497	22,492	661	3.18%	-7,554	-26.04%
Devils Lake	498	681	377	656	632	540	547	596	534	250	-183	-26.87%	-158	-24.09%
Dickinson	1,550	2,096	925	2,498	2,257	1,963	1,668	1,882	5,097	4,078	-546	-26.05%	-948	-37.95%
Fargo	43,610	39,913	19,820	46,021	36,422	34,156	34,841	34,049	37,943	36,334	3,697	9.26%	-2,411	-5.24%
Grand Forks	8,262	4,706	3,818	9,589	9,725	10,692	11,638	12,456	12,756	12,109	3,556	75.56%	-1,327	-13.84%
Jamestown	800	1,213	604	1,119	907	924	840	896	610	214	-413	-34.05%	-319	-28.51%
Minot	11,163	13,077	8,039	15,718	13,908	13,022	12,625	15,918	20,765	20,828	-1,914	-14.64%	-4,555	-28.98%
Williston	5,070	4,892	2,237	7,674	6,424	6,116	5,626	7,268	11,031	9,144	178	3.64%	-2,604	-33.93%
TOTALS	92,408	87,372	50,357	112,284	97,129	91,184	92,669	98,144	114,233	105,449	4963	5.68%	-19,876	-17.70%

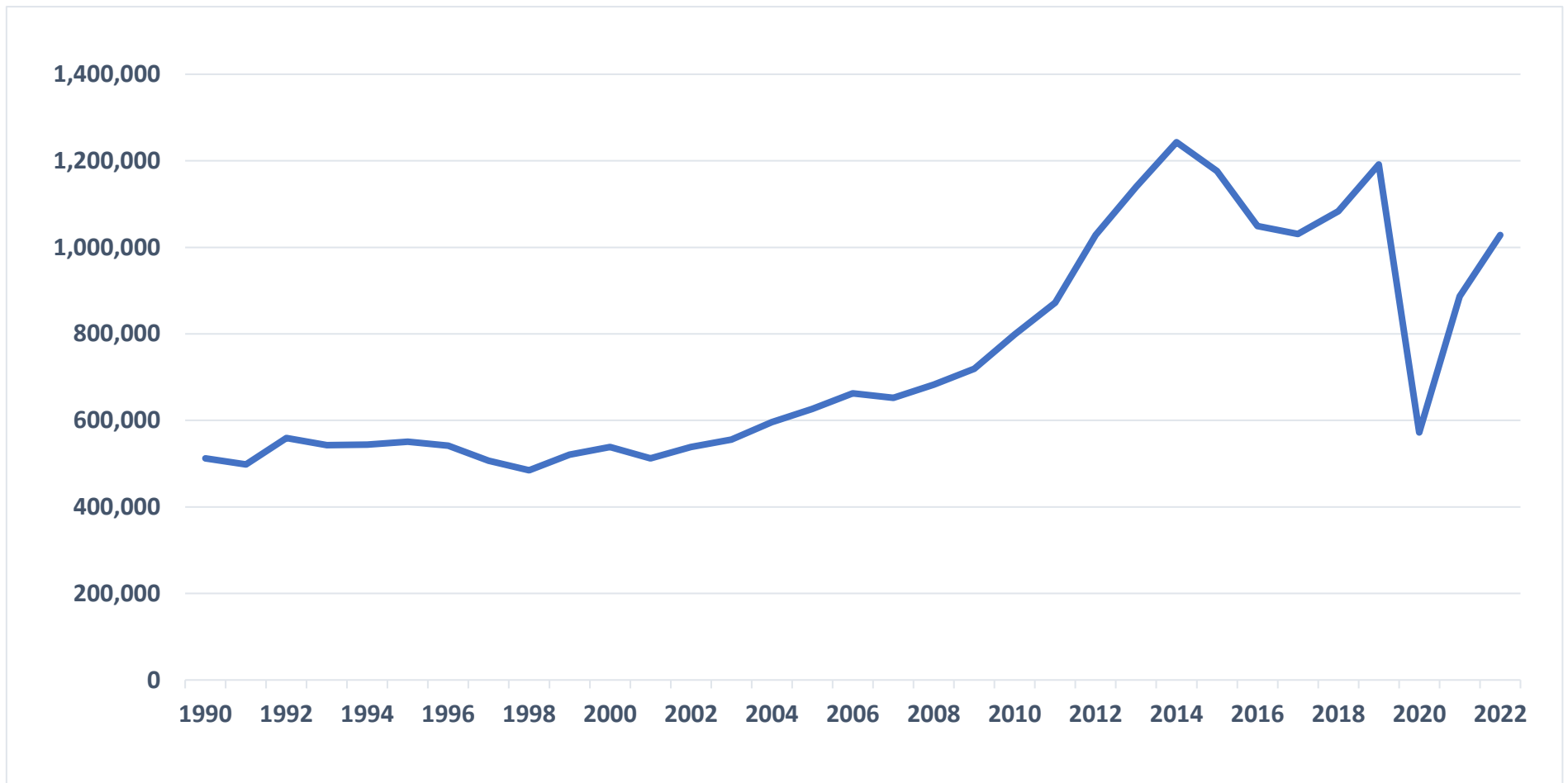


North Dakota Airline Passenger Boarding Trends (2019 - 2022)

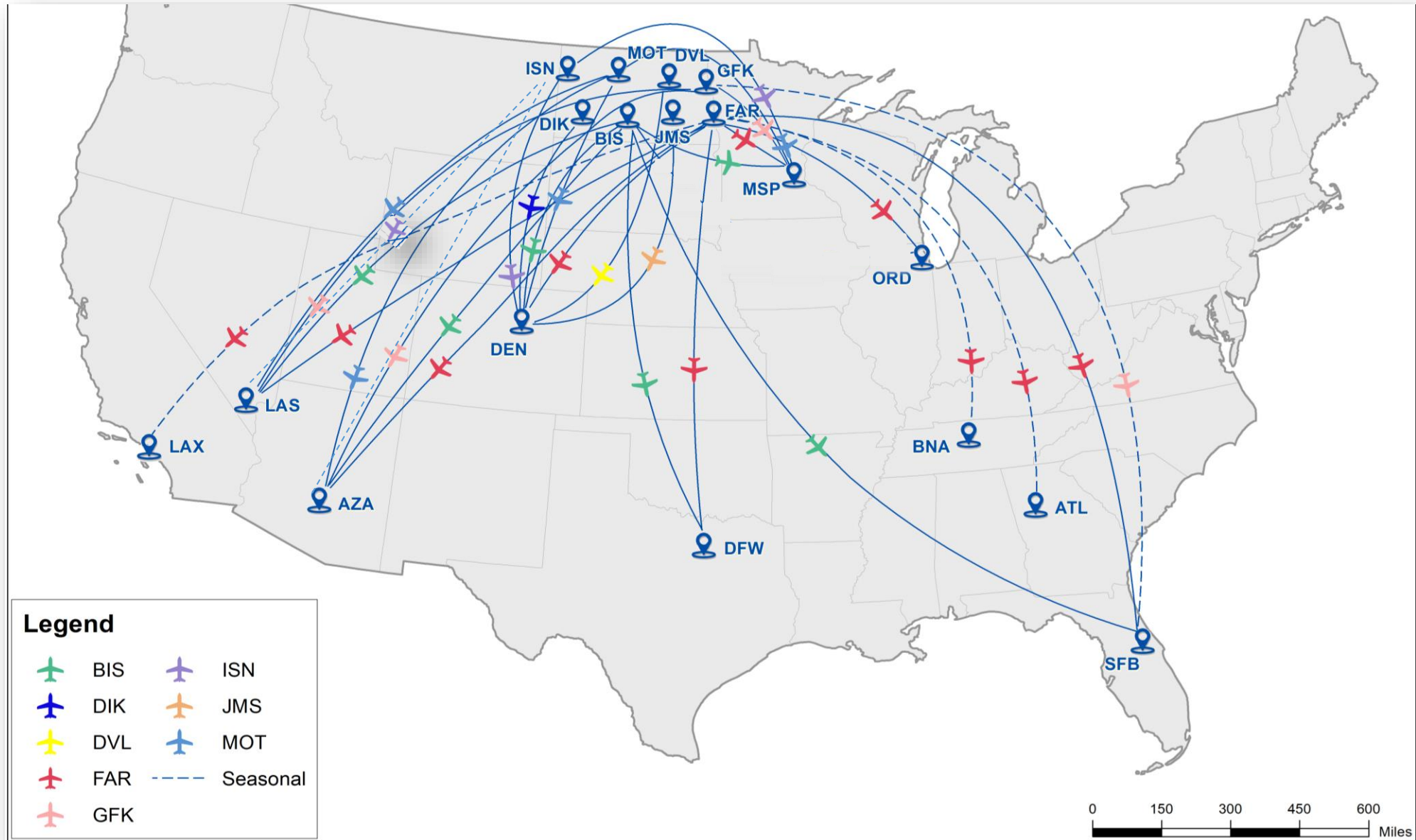




North Dakota Historical Airline Boardings (1990 - 2022)



North Dakota Air Service Route Map - 2022

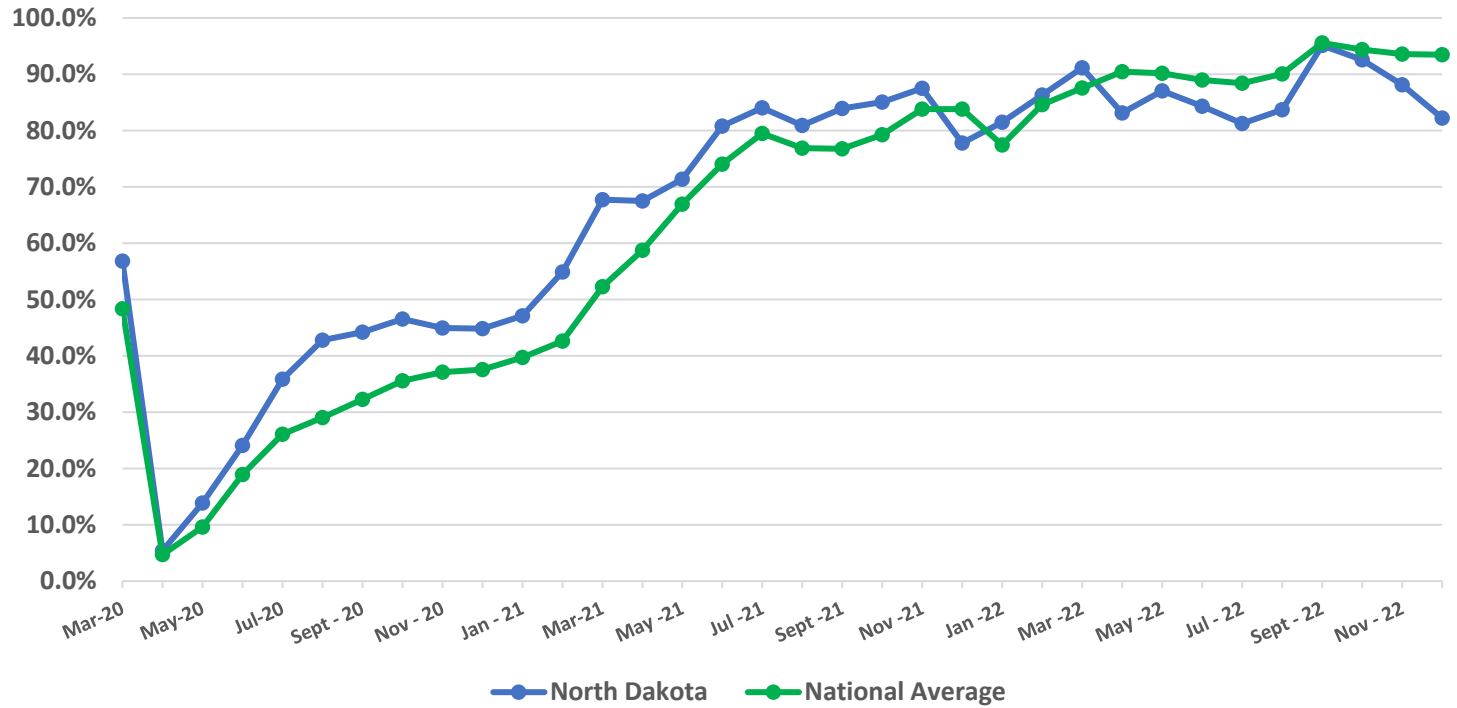




Airline Enplanement Monthly Retention Rates North Dakota versus National Average *(Comparing each month to the same month in 2019)*

ND vs. TSA Enplanement Retention

Month	ND	TSA
Mar-20	56.8%	48.3%
Apr-20	5.4%	4.7%
May-20	13.9%	9.6%
Jun-20	24.1%	18.9%
Jul-20	35.9%	26.1%
Aug-20	42.8%	29.0%
Sept - 20	44.2%	32.3%
Oct - 20	46.5%	35.6%
Nov - 20	45.0%	37.1%
Dec - 20	44.8%	37.6%
Jan - 21	47.1%	39.7%
Feb - 21	54.9%	42.6%
Mar-21	67.7%	52.2%
Apr - 21	67.5%	58.7%
May - 21	71.4%	67.0%
Jun - 21	80.8%	74.0%
Jul - 21	84.0%	79.5%
Aug - 21	80.9%	76.9%
Sept - 21	83.9%	76.8%
Oct - 21	85.0%	79.3%
Nov - 21	87.5%	83.8%
Dec - 21	77.8%	83.8%
Jan - 22	81.5%	77.4%
Feb - 22	86.3%	84.6%
Mar - 22	91.2%	87.6%
Apr - 22	83.2%	90.5%
May - 22	87.0%	90.2%
Jun - 22	84.3%	89.0%
Jul - 22	81.3%	88.4%
Aug - 22	83.7%	90.1%
Sept - 22	95.1%	95.6%
Oct - 22	92.5%	94.4%
Nov - 22	88.1%	93.6%
Dec - 22	82.2%	93.5%



National statistics were retrieved from TSA website: <https://www.tsa.gov/coronavirus/passenger-throughput>