

State of North Dakota

Bismarck, North Dakota

Volume 194

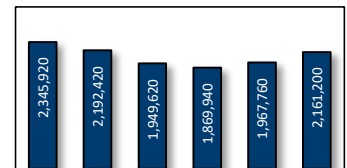
Calendar Year 2019

April 2020

Airport Traffic Quarterly - Domestic

North Dakota Air Service Ticker

	YE 4Q19	YoY	4Q19	YoY	
<i>Airport Totals</i>	Passengers	2,161,200 ↑	9.8%	576,700 ↑	10.5%
	Revenue	\$500,959,861 →	1.0%	\$131,447,795 →	0.1%
	Fares	\$232 ↓	-8.0%	\$228 ↓	-9.4%
	Yields	22.76¢ ↓	-6.8%	22.70¢ ↓	-4.8%
<i>Top Airlines</i>	Delta	878,800 ↑	4.8%	239,720 ↑	3.5%
	United	527,200 ↑	15.5%	140,520 ↑	16.1%
	Allegiant	444,460 ↑	12.7%	111,640 ↑	13.4%
	American	206,500 ↑	10.5%	54,960 ↑	19.2%
<i>Top Markets</i>	Phoenix / Mesa	266,260 ↑	24.1%		
	Las Vegas	195,600 →	-1.1%		
	Denver	138,220 ↑	13.7%		
	Orlando / Sanford	94,800 ↑	5.8%		



Over the Past Six Years, Domestic Passengers at North Dakota Have Fallen by 184,720, a Decrease of 7.9%. Revenue Has Fallen \$84.4m - a Decrease of 14.4%.

Highlights in This Issue



Over the past four quarters, average domestic passenger totals at North Dakota have changed by 9.2%, 9.7%, 9.8% and 10.5%. Over the course of the entire year passenger numbers have risen from 1,967,760 to 2,161,200 passengers.



Over the past four quarters, average domestic revenue totals at North Dakota have changed by -1.5%, 0.1%, 5.0% and 0.1%. Over the course of the entire year airline revenue has risen from \$496.0 million to \$501.0 million.



Over the past four quarters, average domestic one-way fares at North Dakota have changed by -9.8%, -8.8%, -4.4% and -9.4%. Over the course of the entire year average airline fares have fallen from \$252 to \$232.

2301 University Dr #22
Bismarck, North Dakota 58504
(701) 328-9650



472 West 27th Place
Eugene, Oregon 97405
(541) 954-1569

Table of Contents

Passengers and Revenue at North Dakota

1	Table of Contents
2	Domestic Origin and Destination Passengers (w/ PDEW) at North Dakota by Quarter Domestic Origin and Destination Revenue at North Dakota by Quarter
3	Six Year Trend of Domestic Origin and Destination Passengers at North Dakota Top 10 Domestic Origin and Destination Passenger Markets at North Dakota
4-5	Top 50 Domestic Origin and Destination Passenger Markets at North Dakota
6-8	Airport Passenger Shares at Consolidated Market Areas
9	Top 10 Passenger Growth Markets at North Dakota
10	Six Year Trend of Domestic Origin and Destination Revenue at North Dakota Top 10 Domestic Origin and Destination Revenue Markets at North Dakota
11-12	Top 50 Domestic Origin and Destination Revenue Markets at North Dakota
13	Top 10 Revenue Growth Markets at North Dakota

Fares and Yields at North Dakota

14	Average Domestic Fare by Quarter of Origin and Destination Passengers at North Dakota Average Domestic Yield by Quarter of Origin and Destination Passengers at North Dakota
15	Six Year Trend of Domestic Origin and Destination Average Fares at North Dakota Top 10 Domestic Origin and Destination Average Fare Markets at North Dakota
16-17	Top 50 Domestic Origin and Destination Average Fare Markets at North Dakota
18	Six Year Trend of Domestic Origin and Destination Average Yields at North Dakota Top 10 Domestic Origin and Destination Average Yield Markets at North Dakota
19-20	Top 50 Domestic Origin and Destination Average Yield Markets at North Dakota

Airline Statistics at North Dakota

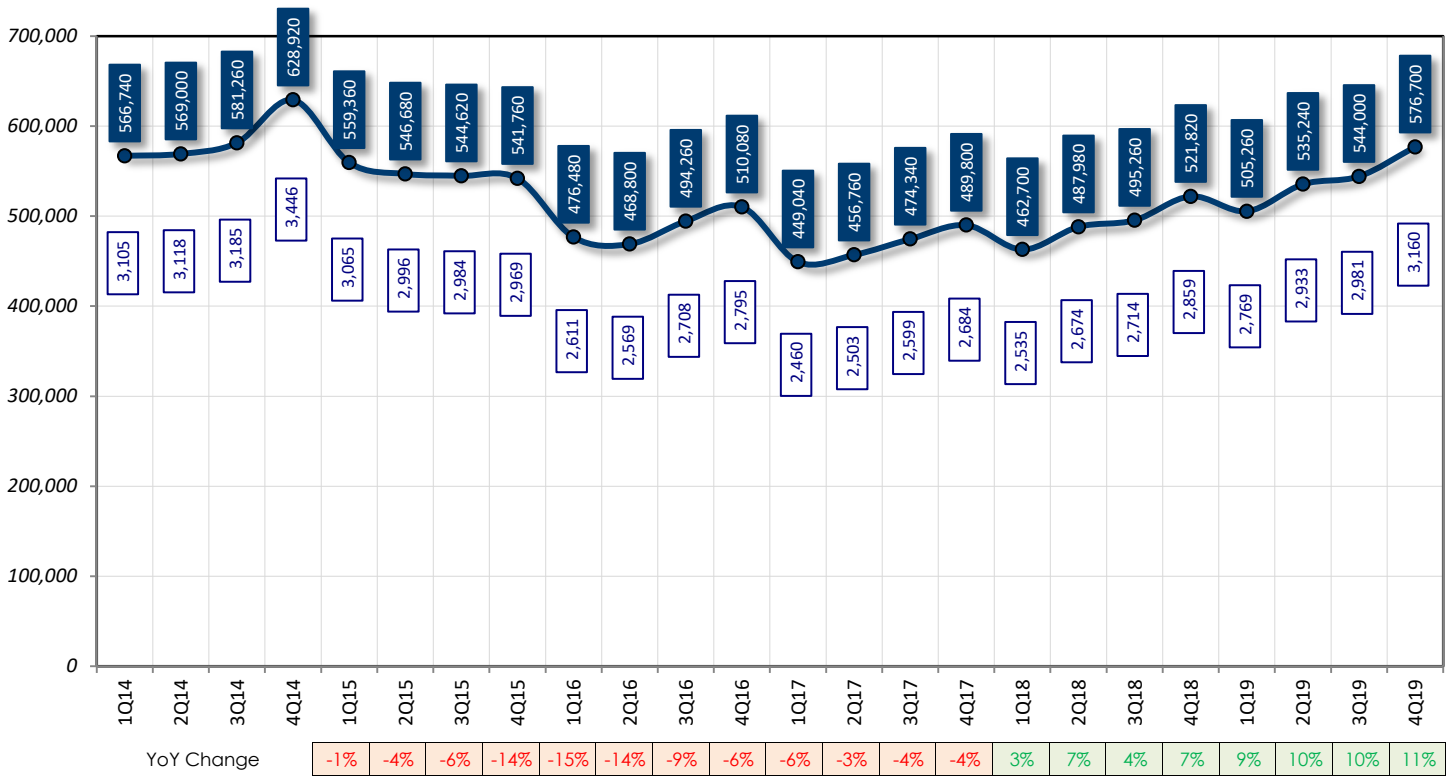
21	Top Domestic Origin and Destination Passenger Airlines at North Dakota Top Domestic Origin and Destination Revenue Airlines at North Dakota
22	Total Domestic Passengers by Airline and Quarter at North Dakota Total Domestic Revenue by Airline and Quarter at North Dakota
23	Airline Shares of Domestic Origin and Destination Passengers at North Dakota Airline Market Share by Quarter of Domestic Origin and Destination Passengers at North Dakota
24	Airline Shares of Domestic Origin and Destination Revenue at North Dakota Airline Market Share by Quarter of Domestic Origin and Destination Revenue at North Dakota

#N/A

25-26	Top 52 Domestic Origin and Destination Passenger States / Territories
27-28	Top 52 Domestic Origin and Destination Revenue States / Territories
29-30	Average Fares at the Top 52 Domestic Origin and Destination States / Territories

Domestic Origin and Destination Passengers (w/ PDEW) at North Dakota by Quarter

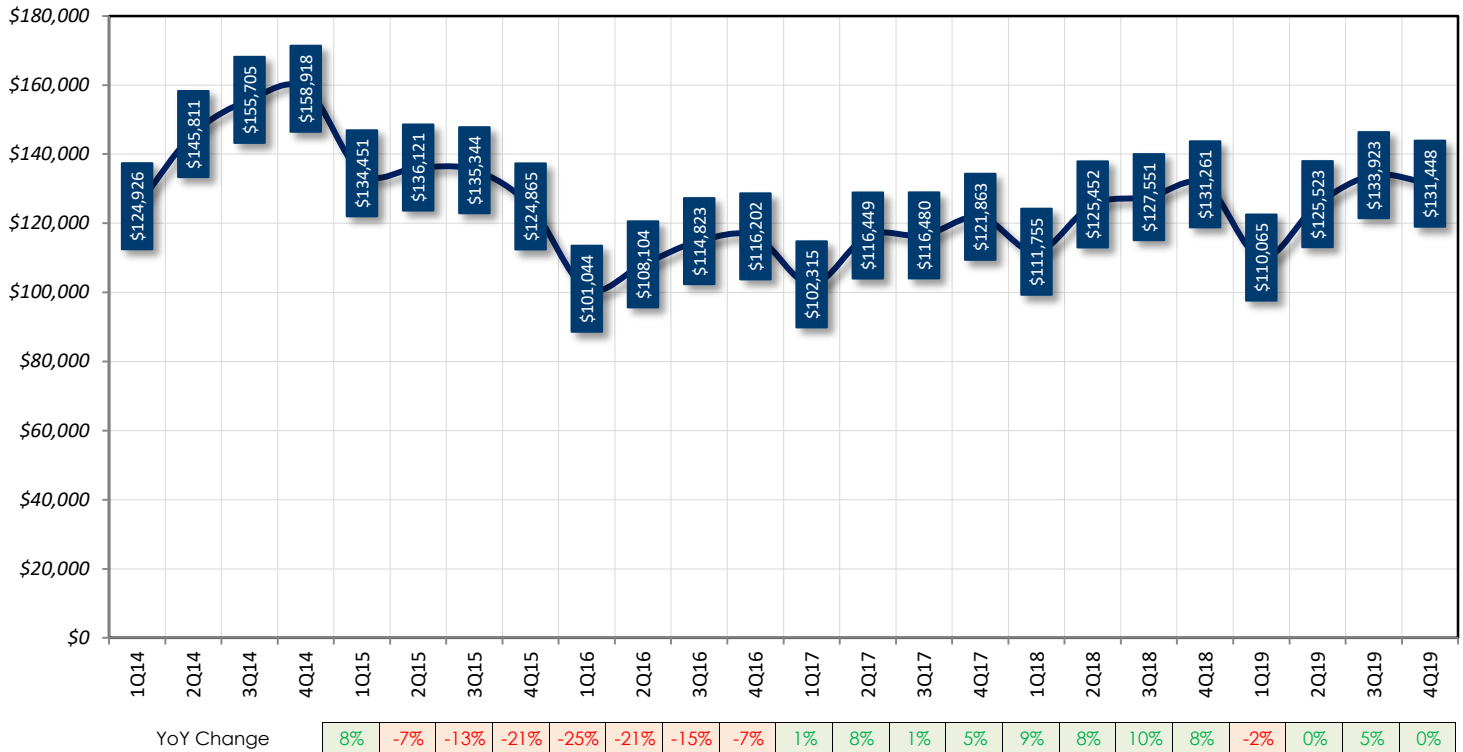
1Q 2014 through 4Q 2019



Domestic Origin and Destination Revenue at North Dakota by Quarter

1Q 2014 through 4Q 2019

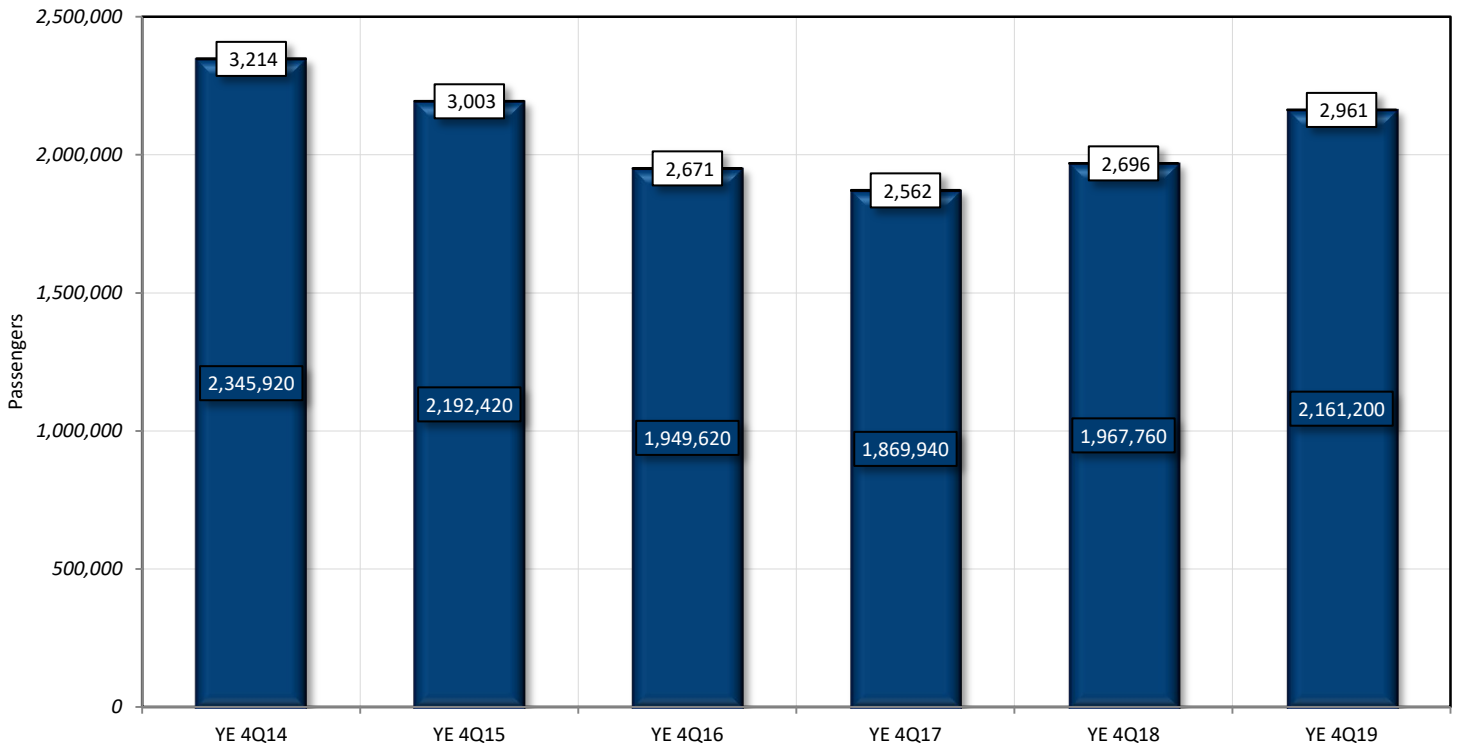
thousands



Six Year Trend of Domestic Origin and Destination Passengers at North Dakota

YE 4Q14 to YE 4Q19

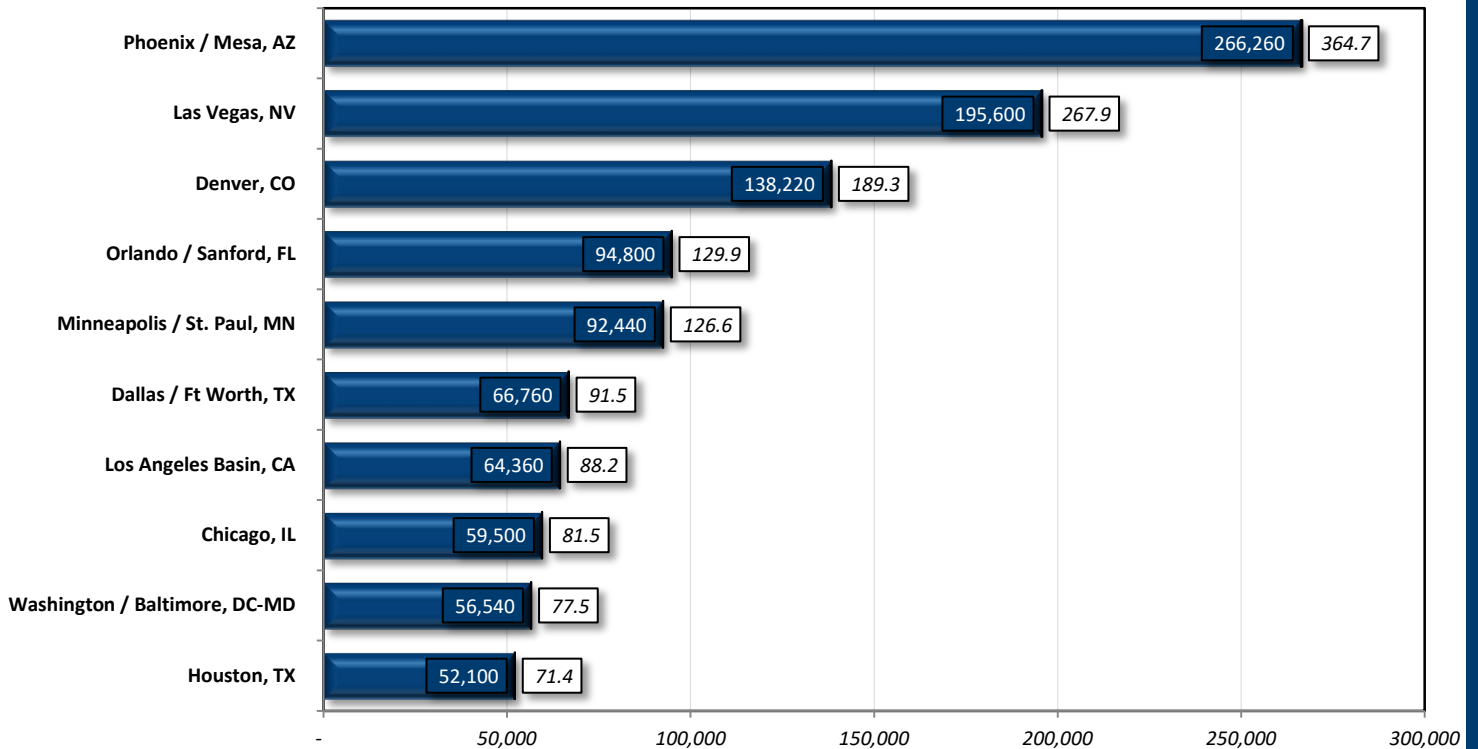
■ Passengers □ PDEW



Top 10 Domestic Origin and Destination Passenger Markets at North Dakota

Calendar Year 2019

■ Passengers □ PDEW



Top 50 Domestic Origin and Destination Passenger Markets at North Dakota Ranked by Calendar Year 2019

Approximates 100% Sample - Directional Journeyed Passengers

Rank	Market	Total Passengers					PDEW YE 4Q19	Paxs YE 4Q18	Change 18-19
		1Q19	2Q19	3Q19	4Q19	YE 4Q19			
1	Phoenix / Mesa, AZ	97,940	53,240	41,200	73,880	266,260	364.7	214,620	↑ 24.1%
2	Las Vegas, NV	56,280	47,660	39,260	52,400	195,600	267.9	197,740	→ -1.1%
3	Denver, CO	21,520	32,580	45,000	39,120	138,220	189.3	121,520	↑ 13.7%
4	Orlando / Sanford, FL	34,280	24,140	15,260	21,120	94,800	129.9	89,640	↑ 5.8%
5	Minneapolis / St. Paul, MN	18,120	20,360	25,160	28,800	92,440	126.6	88,380	↑ 4.6%
6	Dallas / Ft Worth, TX	15,400	16,320	17,240	17,800	66,760	91.5	63,740	↑ 4.7%
7	Los Angeles Basin, CA	11,560	17,920	19,760	15,120	64,360	88.2	61,580	↑ 4.5%
8	Chicago, IL	9,880	16,160	17,360	16,100	59,500	81.5	53,980	↑ 10.2%
9	Washington / Baltimore, DC-MD	9,360	16,680	16,800	13,700	56,540	77.5	54,980	↑ 2.8%
10	Houston, TX	10,740	13,800	13,620	13,940	52,100	71.4	49,180	↑ 5.9%
11	New York / Newark, NY-NJ	6,740	11,700	12,600	12,360	43,400	59.5	41,000	↑ 5.9%
12	Seattle / Tacoma, WA	6,420	10,700	14,260	10,520	41,900	57.4	41,080	→ 2.0%
13	Atlanta, GA	6,800	9,240	10,000	9,180	35,220	48.2	32,080	↑ 9.8%
14	San Francisco Bay, CA	5,500	8,620	9,620	8,200	31,940	43.8	29,520	↑ 8.2%
15	South Florida, FL	10,580	6,500	5,160	7,580	29,820	40.8	26,380	↑ 13.0%
16	San Diego, CA	6,620	7,020	6,680	6,980	27,300	37.4	26,280	↑ 3.9%
17	Portland, OR	4,060	5,940	8,440	6,860	25,300	34.7	24,260	↑ 4.3%
18	Salt Lake City, UT	5,140	6,840	6,760	6,400	25,140	34.4	25,480	→ -1.3%
19	Nashville, TN	4,480	5,680	7,240	7,520	24,920	34.1	20,740	↑ 20.2%
20	San Antonio, TX	5,460	6,020	5,840	6,240	23,560	32.3	20,600	↑ 14.4%
21	St. Louis, MO	3,980	6,200	5,680	5,740	21,600	29.6	19,220	↑ 12.4%
22	Tampa / St. Petersburg, FL	6,080	4,400	4,660	6,140	21,280	29.2	18,400	↑ 15.7%
23	Kansas City, MO	3,940	5,320	5,780	5,840	20,880	28.6	17,260	↑ 21.0%
24	Fort Myers, FL	9,120	3,600	2,180	5,720	20,620	28.2	17,940	↑ 14.9%
25	Boston, MA	2,120	5,960	6,800	5,200	20,080	27.5	18,140	↑ 10.7%

continued on page 5

source: US DOT Table DB1B

Top 50 Domestic Origin and Destination Passenger Markets at North Dakota Ranked by Calendar Year 2019

Approximates 100% Sample - Directional Journeyed Passengers

Rank	Market	Total Passengers				YE 4Q19	PDEW YE 4Q19	Paxs YE 4Q18	Change 18-19
		1Q19	2Q19	3Q19	4Q19				
26	Detroit, MI	3,240	5,320	4,920	5,280	18,760	25.7	16,580	↑ 13.1%
27	Austin, TX	4,220	4,620	5,160	4,280	18,280	25.0	16,280	↑ 12.3%
28	Sacramento, CA	3,500	4,580	4,880	4,800	17,760	24.3	15,980	↑ 11.1%
29	Charlotte, NC	2,680	4,680	4,600	5,160	17,120	23.5	13,840	↑ 23.7%
30	Philadelphia / Trenton, PA-NJ	3,100	4,260	5,060	4,680	17,100	23.4	18,780	↓ -8.9%
31	Oklahoma City, OK	3,680	3,920	4,360	4,240	16,200	22.2	14,720	↑ 10.1%
32	New Orleans, LA	4,000	3,540	3,040	4,200	14,780	20.2	12,360	↑ 19.6%
33	Raleigh / Durham, NC	2,280	3,580	4,000	4,360	14,220	19.5	11,720	↑ 21.3%
34	Indianapolis, IN	2,180	4,160	3,780	3,800	13,920	19.1	12,820	↑ 8.6%
35	Pittsburgh, PA	2,880	3,860	3,840	3,240	13,820	18.9	13,080	↑ 5.7%
36	Boise, ID	2,800	3,580	3,660	3,300	13,340	18.3	12,180	↑ 9.5%
37	Milwaukee, WI	2,160	3,180	3,260	3,180	11,780	16.1	10,200	↑ 15.5%
38	Spokane, WA	1,900	2,500	3,520	3,000	10,920	15.0	10,320	↑ 5.8%
39	Anchorage, AK	1,240	3,060	4,240	2,120	10,660	14.6	10,020	↑ 6.4%
40	Columbus, OH	2,120	2,640	3,120	2,340	10,220	14.0	8,480	↑ 20.5%
41	Tulsa, OK	1,720	2,840	2,580	2,700	9,840	13.5	9,200	↑ 7.0%
42	Omaha, NE	2,520	2,360	2,440	2,340	9,660	13.2	9,020	↑ 7.1%
43	Albuquerque, NM	1,720	3,260	2,240	1,880	9,100	12.5	8,680	↑ 4.8%
44	Cleveland, OH	1,540	2,160	2,620	2,500	8,820	12.1	8,100	↑ 8.9%
45	Cincinnati, OH	1,440	2,300	2,440	2,020	8,200	11.2	6,640	↑ 23.5%
46	Grand Rapids, MI	1,580	2,040	2,400	2,140	8,160	11.2	6,760	↑ 20.7%
47	Hartford, CT	1,060	2,160	3,000	1,900	8,120	11.1	7,360	↑ 10.3%
48	Memphis, TN	1,420	1,860	2,080	2,220	7,580	10.4	7,420	↑ 2.2%
49	Madison, WI	1,460	1,980	1,960	2,100	7,500	10.3	6,900	↑ 8.7%
50	Jacksonville, FL	1,820	1,860	1,980	1,800	7,460	10.2	5,380	↑ 38.7%
Total of All Markets		505,220	534,460	543,180	575,960	2,158,821	2,957	1,967,760	↑ 9.7%

source: US DOT Table DB1B

Airport Shares at Consolidated O&D Passenger Markets at North Dakota Ranked by Calendar Year 2019

Approximates 100% Sample - Directional Journeyed Passengers

Market Area / Airport		Total Passengers				YE 4Q19	PDEW YE 4Q19	Paxs YE 4Q18	Change 18-19
		1Q19	2Q19	3Q19	4Q19				
Charlotte / Concord									
1	Charlotte	2,680	4,680	4,600	5,160	17,120	23.5	13,840 ↑	23.7%
2	Concord	0	0	0	0	0	0.0	0 →	0.0%
<i>Total of Above</i>		<i>2,680</i>	<i>4,680</i>	<i>4,600</i>	<i>5,160</i>	17,120	23.5	13,840 ↑	23.7%
Chicago									
1	Chicago O'Hare	8,680	14,120	15,760	14,280	52,840	72.4	47,960 ↑	10.2%
2	Chicago Midway	1,200	2,040	1,600	1,820	6,660	9.1	6,020 ↑	10.6%
<i>Total of Above</i>		<i>9,880</i>	<i>16,160</i>	<i>17,360</i>	<i>16,100</i>	59,500	81.5	53,980 ↑	10.2%
Dallas / Fort Worth									
1	Dallas / Ft Worth	15,380	16,280	17,220	17,800	66,680	91.3	63,540 ↑	4.9%
2	Dallas Love Field	20	40	20	0	80	0.1	200 ↓	-60.0%
<i>Total of Above</i>		<i>15,400</i>	<i>16,320</i>	<i>17,240</i>	<i>17,800</i>	66,760	91.5	63,740 ↑	4.7%
Florida - Southeast									
1	Miami	4,980	3,300	2,360	3,540	14,180	19.4	12,780 ↑	11.0%
2	Fort Lauderdale	4,760	2,460	1,940	3,100	12,260	16.8	10,460 ↑	17.2%
3	West Palm Beach	840	740	860	940	3,380	4.6	3,140 ↑	7.6%
<i>Total of Above</i>		<i>10,580</i>	<i>6,500</i>	<i>5,160</i>	<i>7,580</i>	29,820	40.8	26,380 ↑	13.0%
Florida - Southwest									
1	Fort Myers	9,120	3,600	2,180	5,720	20,620	28.2	17,940 ↑	14.9%
2	Sarasota / Bradenton	560	220	160	380	1,320	1.8	1,060 ↑	24.5%
3	Punta Gorda	0	0	0	0	0	0.0	0 →	0.0%
<i>Total of Above</i>		<i>9,680</i>	<i>3,820</i>	<i>2,340</i>	<i>6,100</i>	21,940	30.1	19,000 ↑	15.5%

continued on page 7

Airport Shares at Consolidated O&D Passenger Markets at North Dakota Ranked by Calendar Year 2019

Approximates 100% Sample - Directional Journeyed Passengers

Market Area / Airport	Total Passengers				YE 4Q19	PDEW YE 4Q19	Paxs YE 4Q18	Share 18-19
	1Q19	2Q19	3Q19	4Q19				
Los Angeles Basin								
1 Los Angeles	7,360	12,240	13,260	9,500	42,360	58.0	42,640 →	-0.7%
2 Orange County	3,020	3,560	3,420	3,140	13,140	18.0	13,300 →	-1.2%
3 Ontario	960	1,400	2,220	1,680	6,260	8.6	4,080 ↑	53.4%
4 Burbank	200	680	820	780	2,480	3.4	1,480 ↑	67.6%
5 Long Beach	20	40	40	20	120	0.2	80 ↑	50.0%
<i>Total of Above</i>	<i>11,560</i>	<i>17,920</i>	<i>19,760</i>	<i>15,120</i>	64,360	88.2	61,580 ↑	4.5%
Houston								
1 Houston IAH	10,180	13,280	13,120	13,120	49,700	68.1	47,620 ↑	4.4%
2 Houston Hobby	560	520	500	820	2,400	3.3	1,560 ↑	53.8%
<i>Total of Above</i>	<i>10,740</i>	<i>13,800</i>	<i>13,620</i>	<i>13,940</i>	52,100	71.4	49,180 ↑	5.9%
New York City / Newark Area								
1 New York La Guardia	3,520	6,060	6,460	6,840	22,880	31.3	22,060 ↑	3.7%
2 New York Newark	2,000	3,340	3,980	3,660	12,980	17.8	12,340 ↑	5.2%
3 New York J F Kennedy	1,100	2,000	1,800	1,580	6,480	8.9	5,660 ↑	14.5%
4 White Plains	60	220	240	180	700	1.0	600 ↑	16.7%
5 Newburgh	60	80	120	80	340	0.5	280 ↑	21.4%
6 Islip	0	0	0	20	20	0.0	60 ↓	-66.7%
<i>Total of Above</i>	<i>6,740</i>	<i>11,700</i>	<i>12,600</i>	<i>12,360</i>	43,400	59.5	41,000 ↑	5.9%
Orlando / Sanford								
1 Sanford	19,320	12,820	6,540	9,500	48,180	66.0	49,900 ↓	-3.4%
2 Orlando	14,960	11,320	8,720	11,620	46,620	63.9	39,740 ↑	17.3%
<i>Total of Above</i>	<i>34,280</i>	<i>24,140</i>	<i>15,260</i>	<i>21,120</i>	94,800	129.9	89,640 ↑	5.8%

continued on page 8

Airport Shares at Consolidated O&D Passenger Markets at North Dakota Ranked by Calendar Year 2019

Approximates 100% Sample - Directional Journeyed Passengers

Market Area / Airport	Total Passengers				YE 4Q19	PDEW YE 4Q19	Paxs YE 4Q18	Share 18-19
	1Q19	2Q19	3Q19	4Q19				
Phoenix / Mesa								
1 Mesa Gateway	88,740	45,840	33,360	59,280	227,220	311.3	175,320	29.6%
2 Phoenix	9,200	7,400	7,840	14,600	39,040	53.5	39,300	-0.7%
<i>Total of Above</i>	<i>97,940</i>	<i>53,240</i>	<i>41,200</i>	<i>73,880</i>	266,260	364.7	214,620	24.1%
St. Louis / Belleville								
1 St Louis	3,980	6,200	5,680	5,740	21,600	29.6	19,220	12.4%
2 Belleville	0	0	0	0	0	0.0	0	0.0%
<i>Total of Above</i>	<i>3,980</i>	<i>6,200</i>	<i>5,680</i>	<i>5,740</i>	21,600	29.6	19,220	12.4%
San Francisco Bay								
1 San Francisco	3,960	6,380	6,900	5,920	23,160	31.7	22,020	5.2%
2 San Jose	1,500	2,060	2,700	2,020	8,280	11.3	6,820	21.4%
3 Oakland	40	180	20	260	500	0.7	680	-26.5%
<i>Total of Above</i>	<i>5,500</i>	<i>8,620</i>	<i>9,620</i>	<i>8,200</i>	31,940	43.8	29,520	8.2%
Seattle / Tacoma / Everett								
1 Seattle / Tacoma	6,420	10,700	14,260	10,520	41,900	57.4	41,080	2.0%
2 Everett	40	780	820	740	2,380	3.3	0	0.0%
<i>Total of Above</i>	<i>6,460</i>	<i>11,480</i>	<i>15,080</i>	<i>11,260</i>	44,280	60.7	41,080	7.8%
Tampa / St. Petersburg								
1 Tampa	6,080	4,400	4,660	6,140	21,280	29.2	18,400	15.7%
2 St. Pete / Clearwater	0	0	0	0	0	0.0	0	0.0%
<i>Total of Above</i>	<i>6,080</i>	<i>4,400</i>	<i>4,660</i>	<i>6,140</i>	21,280	29.2	18,400	15.7%
Washington / Baltimore								
1 Washington National	6,120	9,340	9,500	7,640	32,600	44.7	31,580	3.2%
2 Baltimore	1,920	4,300	4,660	3,760	14,640	20.1	14,300	2.4%
3 Washington Dulles	1,320	3,040	2,640	2,300	9,300	12.7	9,100	2.2%
<i>Total of Above</i>	<i>9,360</i>	<i>16,680</i>	<i>16,800</i>	<i>13,700</i>	56,540	77.5	54,980	2.8%

source: US DOT Table DB1B

Top 10 Passenger Growth Markets at North Dakota YE 4Q18 to YE 4Q19

Approximates 100% Sample - Directional Journeyed Passengers - Top 50 Markets

Rank	Market Area	Total Paxs YE 4Q19	Paxs Growth	PDEW Growth	Growth Rate
1	Phoenix / Mesa, AZ	266,260	51,640	70.7	24.1%
2	Denver, CO	138,220	16,700	22.9	13.7%
3	Chicago, IL	59,500	5,520	7.6	10.2%
4	Orlando / Sanford, FL	94,800	5,160	7.1	5.8%
5	Nashville, TN	24,920	4,180	5.7	20.2%
6	Minneapolis / St. Paul, MN	92,440	4,060	5.6	4.6%
7	Kansas City, MO	20,880	3,620	5.0	21.0%
8	South Florida, FL	29,820	3,440	4.7	13.0%
9	Charlotte, NC	17,120	3,280	4.5	23.7%
10	Atlanta, GA	35,220	3,140	4.3	9.8%
Total of Above		779,180	100,740	138.0	14.8%

Top 10 Percentage Growth Markets at North Dakota YE 4Q18 to YE 4Q19

Approximates 100% Sample - Directional Journeyed Passengers - Top 50 Markets

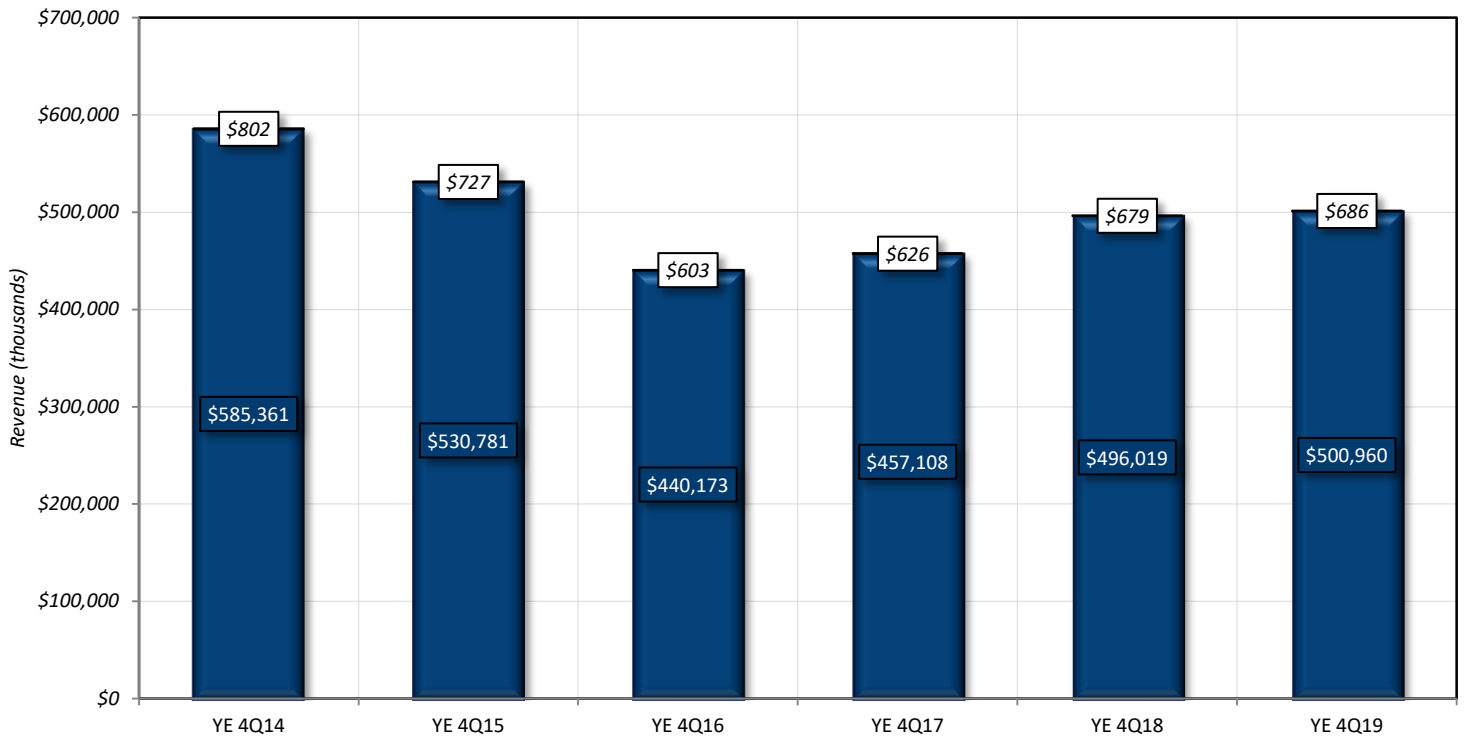
Rank	Market Area	Total Paxs YE 4Q19	Paxs Growth	PDEW Growth	Growth Rate
1	Jacksonville, FL	7,460	2,080	2.8	38.7%
2	Phoenix / Mesa, AZ	266,260	51,640	70.7	24.1%
3	Charlotte, NC	17,120	3,280	4.5	23.7%
4	Cincinnati, OH	8,200	1,560	2.1	23.5%
5	Raleigh / Durham, NC	14,220	2,500	3.4	21.3%
6	Kansas City, MO	20,880	3,620	5.0	21.0%
7	Grand Rapids, MI	8,160	1,400	1.9	20.7%
8	Columbus, OH	10,220	1,740	2.4	20.5%
9	Nashville, TN	24,920	4,180	5.7	20.2%
10	New Orleans, LA	14,780	2,420	3.3	19.6%
Total of Above		392,220	74,420	101.9	23.4%

source: US DOT Table DB1B

Six Year Trend of Domestic Origin and Destination Revenue at North Dakota

YE 4Q14 to YE 4Q19

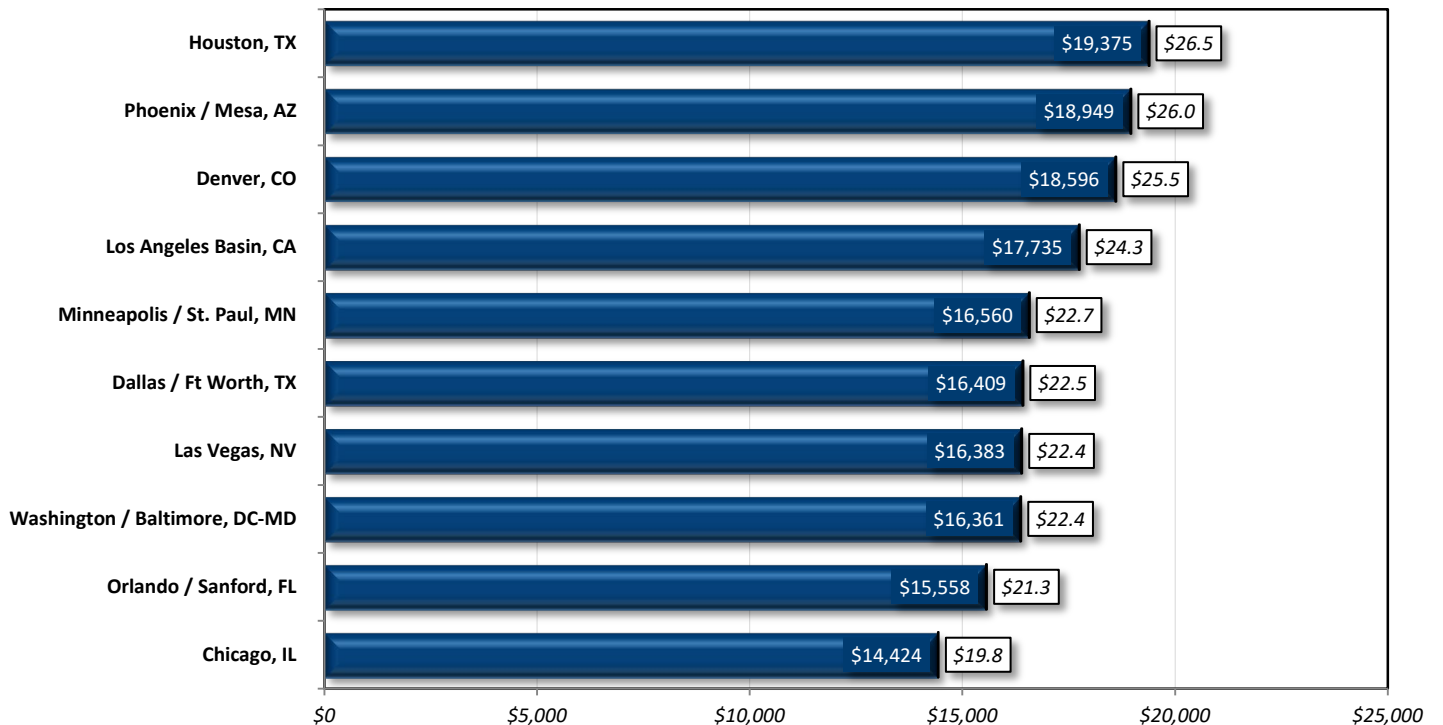
■ Revenue □ RDEW



Top 10 Domestic Origin and Destination Revenue Markets at North Dakota

Calendar Year 2019 - (Revenue in \$thousands)

■ Revenue □ RDEW



**Top 50 Domestic Origin and Destination Revenue Markets at North Dakota
Ranked by Calendar Year 2019**

Approximates 100% Sample - Directional Journeyed Revenue (in \$thousands)

Rank	Market	Total Revenue				YE 4Q19	RDEW YE 4Q19	Revs YE 4Q18	Change 18-19
		1Q19	2Q19	3Q19	4Q19				
1	Houston, TX	\$3,722	\$5,228	\$5,190	\$5,235	\$19,375	\$26.542	\$20,718	↓ -6.5%
2	Phoenix / Mesa, AZ	\$6,122	\$3,679	\$3,488	\$5,661	\$18,949	\$25.957	\$21,650	↓ -12.5%
3	Denver, CO	\$2,827	\$3,564	\$6,144	\$6,061	\$18,596	\$25.474	\$18,467	→ 0.7%
4	Los Angeles Basin, CA	\$3,434	\$4,602	\$5,266	\$4,433	\$17,735	\$24.295	\$17,295	↑ 2.5%
5	Minneapolis / St. Paul, MN	\$3,522	\$3,995	\$4,366	\$4,677	\$16,560	\$22.685	\$17,471	↓ -5.2%
6	Dallas / Ft Worth, TX	\$4,340	\$4,066	\$3,918	\$4,085	\$16,409	\$22.478	\$15,192	↑ 8.0%
7	Las Vegas, NV	\$4,497	\$3,558	\$3,508	\$4,821	\$16,383	\$22.443	\$16,802	↓ -2.5%
8	Washington / Baltimore, DC-MD	\$2,859	\$4,785	\$4,899	\$3,818	\$16,361	\$22.412	\$16,799	↓ -2.6%
9	Orlando / Sanford, FL	\$5,447	\$3,575	\$2,727	\$3,808	\$15,558	\$21.312	\$14,640	↑ 6.3%
10	Chicago, IL	\$2,655	\$3,944	\$4,177	\$3,648	\$14,424	\$19.759	\$13,126	↑ 9.9%
11	New York / Newark, NY-NJ	\$2,002	\$3,325	\$3,977	\$3,822	\$13,125	\$17.980	\$12,900	→ 1.7%
12	Seattle / Tacoma, WA	\$1,800	\$3,002	\$3,974	\$2,982	\$11,758	\$16.107	\$12,343	↓ -4.7%
13	Atlanta, GA	\$2,284	\$2,858	\$3,086	\$2,677	\$10,905	\$14.938	\$10,855	→ 0.5%
14	San Francisco Bay, CA	\$1,619	\$2,496	\$2,744	\$2,438	\$9,296	\$12.734	\$8,925	↑ 4.2%
15	South Florida, FL	\$3,277	\$2,052	\$1,597	\$2,294	\$9,220	\$12.630	\$8,365	↑ 10.2%
16	San Diego, CA	\$1,921	\$2,012	\$1,942	\$1,960	\$7,836	\$10.734	\$8,141	↓ -3.7%
17	Salt Lake City, UT	\$1,630	\$2,026	\$2,106	\$1,950	\$7,712	\$10.564	\$7,892	↓ -2.3%
18	Portland, OR	\$1,223	\$1,805	\$2,475	\$2,015	\$7,518	\$10.299	\$7,300	↑ 3.0%
19	San Antonio, TX	\$1,709	\$1,761	\$1,689	\$1,830	\$6,988	\$9.573	\$7,659	↓ -8.8%
20	Nashville, TN	\$1,252	\$1,609	\$1,882	\$1,915	\$6,656	\$9.118	\$6,290	↑ 5.8%
21	Boston, MA	\$661	\$1,878	\$2,062	\$1,611	\$6,213	\$8.510	\$5,761	↑ 7.8%
22	Tampa / St. Petersburg, FL	\$1,766	\$1,297	\$1,376	\$1,703	\$6,143	\$8.415	\$5,883	↑ 4.4%
23	St. Louis, MO	\$999	\$1,728	\$1,796	\$1,450	\$5,972	\$8.181	\$5,695	↑ 4.9%
24	Kansas City, MO	\$1,104	\$1,439	\$1,654	\$1,605	\$5,801	\$7.947	\$5,244	↑ 10.6%
25	Fort Myers, FL	\$2,652	\$982	\$553	\$1,595	\$5,782	\$7.920	\$5,297	↑ 9.2%

continued on page 12

source: US DOT Table DB1B

Top 50 Domestic Origin and Destination Revenue Markets at North Dakota Ranked by Calendar Year 2019

Approximates 100% Sample - Directional Journeyed Passengers

Rank	Market	Total Revenue				YE 4Q19	RDEW YE 4Q19	Revs YE 4Q18	Change 18-19
		1Q19	2Q19	3Q19	4Q19				
26	Detroit, MI	\$994	\$1,554	\$1,621	\$1,421	\$5,590	\$7.658	\$4,987	↑ 12.1%
27	Oklahoma City, OK	\$1,123	\$1,362	\$1,485	\$1,393	\$5,364	\$7.348	\$5,619	↓ -4.5%
28	Sacramento, CA	\$1,103	\$1,335	\$1,455	\$1,382	\$5,275	\$7.226	\$4,986	↑ 5.8%
29	Austin, TX	\$1,193	\$1,272	\$1,410	\$1,303	\$5,179	\$7.094	\$5,547	↓ -6.6%
30	Philadelphia / Trenton, PA-NJ	\$1,016	\$1,252	\$1,445	\$1,330	\$5,043	\$6.908	\$5,858	↓ -13.9%
31	Charlotte, NC	\$895	\$1,301	\$1,379	\$1,445	\$5,020	\$6.877	\$4,253	↑ 18.0%
32	New Orleans, LA	\$1,296	\$1,145	\$934	\$1,243	\$4,618	\$6.326	\$4,111	↑ 12.3%
33	Pittsburgh, PA	\$904	\$1,277	\$1,305	\$1,114	\$4,600	\$6.301	\$4,617	→ -0.4%
34	Anchorage, AK	\$540	\$1,341	\$1,768	\$835	\$4,484	\$6.143	\$4,129	↑ 8.6%
35	Indianapolis, IN	\$670	\$1,335	\$1,135	\$1,085	\$4,226	\$5.789	\$3,937	↑ 7.3%
36	Raleigh / Durham, NC	\$713	\$960	\$1,113	\$1,345	\$4,130	\$5.658	\$3,579	↑ 15.4%
37	Boise, ID	\$899	\$1,137	\$1,053	\$933	\$4,022	\$5.509	\$3,785	↑ 6.2%
38	Honolulu, HI	\$1,459	\$943	\$491	\$920	\$3,813	\$5.223	\$3,834	→ -0.6%
39	Kahului, HI	\$2,253	\$445	\$238	\$453	\$3,389	\$4.643	\$3,198	↑ 6.0%
40	Tulsa, OK	\$530	\$965	\$929	\$958	\$3,383	\$4.634	\$3,661	↓ -7.6%
41	Milwaukee, WI	\$594	\$850	\$948	\$829	\$3,221	\$4.412	\$3,058	↑ 5.3%
42	Spokane, WA	\$593	\$798	\$967	\$827	\$3,184	\$4.361	\$3,247	→ -1.9%
43	Columbus, OH	\$635	\$702	\$910	\$631	\$2,878	\$3.942	\$2,629	↑ 9.5%
44	Omaha, NE	\$721	\$654	\$759	\$647	\$2,782	\$3.811	\$2,786	→ -0.1%
45	Cleveland, OH	\$512	\$708	\$863	\$687	\$2,770	\$3.795	\$2,737	→ 1.2%
46	Albuquerque, NM	\$516	\$976	\$727	\$516	\$2,735	\$3.747	\$2,546	↑ 7.4%
47	Midland / Odessa, TX	\$560	\$723	\$560	\$618	\$2,461	\$3.371	\$3,514	↓ -30.0%
48	Cincinnati, OH	\$404	\$689	\$722	\$534	\$2,349	\$3.218	\$2,153	↑ 9.1%
49	Grand Rapids, MI	\$438	\$561	\$676	\$615	\$2,289	\$3.136	\$1,991	↑ 15.0%
50	Hartford, CT	\$301	\$557	\$808	\$531	\$2,197	\$3.009	\$2,229	→ -1.5%
Total of All Markets		\$110,054	\$125,336	\$133,695	\$131,258	\$500,344	\$685.403	\$496,019	→ 0.9%

source: US DOT Table DB1B

Top 10 Revenue Growth Markets at North Dakota YE 4Q18 to YE 4Q19

Approximates 100% Sample - Directional Journeys Revenue (in \$thousands) - Top 50 Markets

Rank	Market Area	Total Revs YE 4Q19	Revs Growth	RDEW Growth	Growth Rate
1	Chicago, IL	\$14,424	\$1,298.0	\$1.78	9.9%
2	Dallas / Ft Worth, TX	\$16,409	\$1,217.4	\$1.67	8.0%
3	Orlando / Sanford, FL	\$15,558	\$917.9	\$1.26	6.3%
4	South Florida, FL	\$9,220	\$855.2	\$1.17	10.2%
5	Charlotte, NC	\$5,020	\$767.3	\$1.05	18.0%
6	Detroit, MI	\$5,590	\$602.8	\$0.83	12.1%
7	Kansas City, MO	\$5,801	\$557.4	\$0.76	10.6%
8	Raleigh / Durham, NC	\$4,130	\$551.8	\$0.76	15.4%
9	New Orleans, LA	\$4,618	\$506.6	\$0.69	12.3%
10	Fort Myers, FL	\$5,782	\$485.1	\$0.66	9.2%
Total of Above		\$86,552	\$7,759.5	\$10.63	9.8%

Top 10 Percentage Growth Markets at North Dakota YE 4Q18 to YE 4Q19

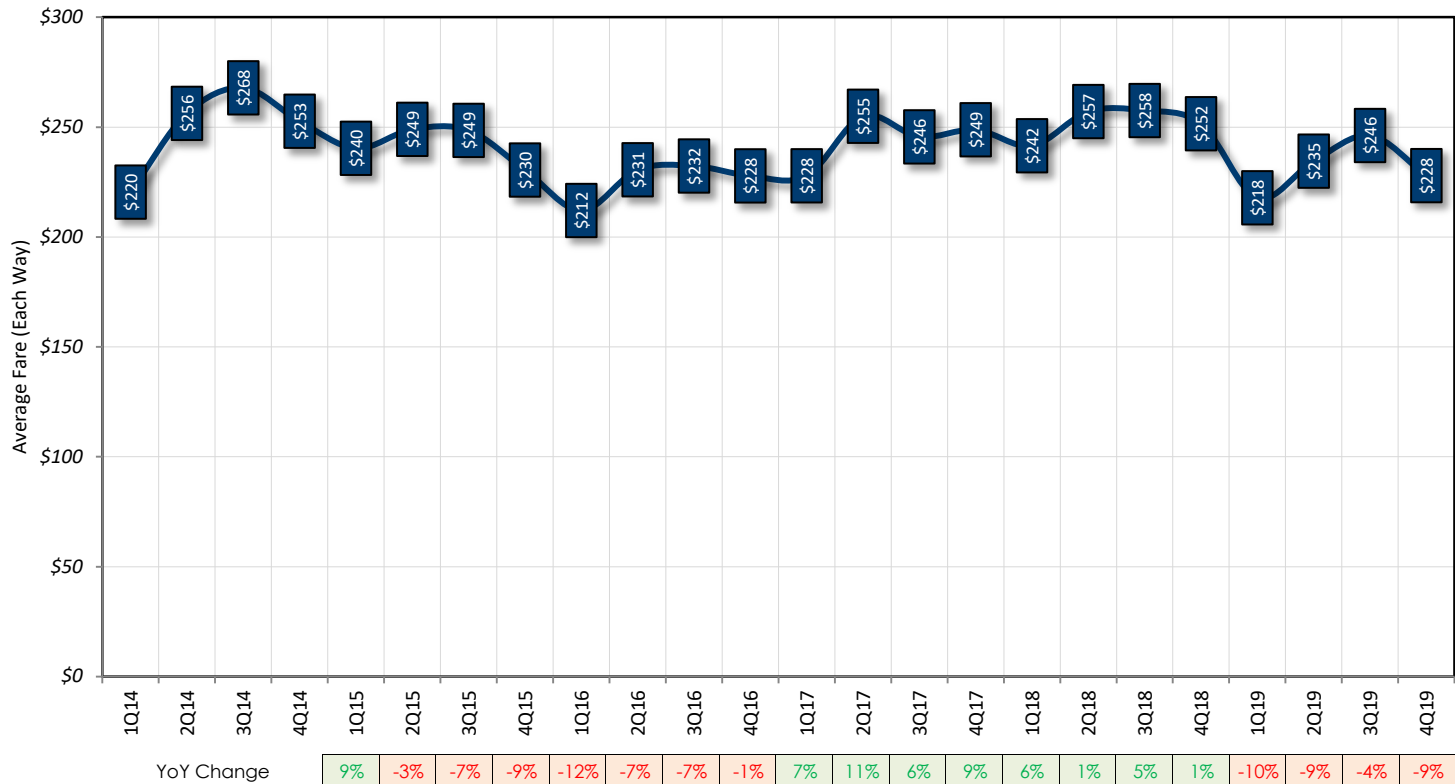
Approximates 100% Sample - Directional Journeys Revenue (in \$thousands) - Top 50 Markets

Rank	Market Area	Total Revs YE 4Q19	Revs Growth	RDEW Growth	Growth Rate
1	Charlotte, NC	\$5,020	\$767.3	\$1.05	18.0%
2	Raleigh / Durham, NC	\$4,130	\$551.8	\$0.76	15.4%
3	Grand Rapids, MI	\$2,289	\$298.2	\$0.41	15.0%
4	New Orleans, LA	\$4,618	\$506.6	\$0.69	12.3%
5	Detroit, MI	\$5,590	\$602.8	\$0.83	12.1%
6	Kansas City, MO	\$5,801	\$557.4	\$0.76	10.6%
7	South Florida, FL	\$9,220	\$855.2	\$1.17	10.2%
8	Chicago, IL	\$14,424	\$1,298.0	\$1.78	9.9%
9	Columbus, OH	\$2,878	\$248.9	\$0.34	9.5%
10	Fort Myers, FL	\$5,782	\$485.1	\$0.66	9.2%
Total of Above		\$59,752	\$6,171.4	\$8.45	11.5%

source: US DOT Table DB1B

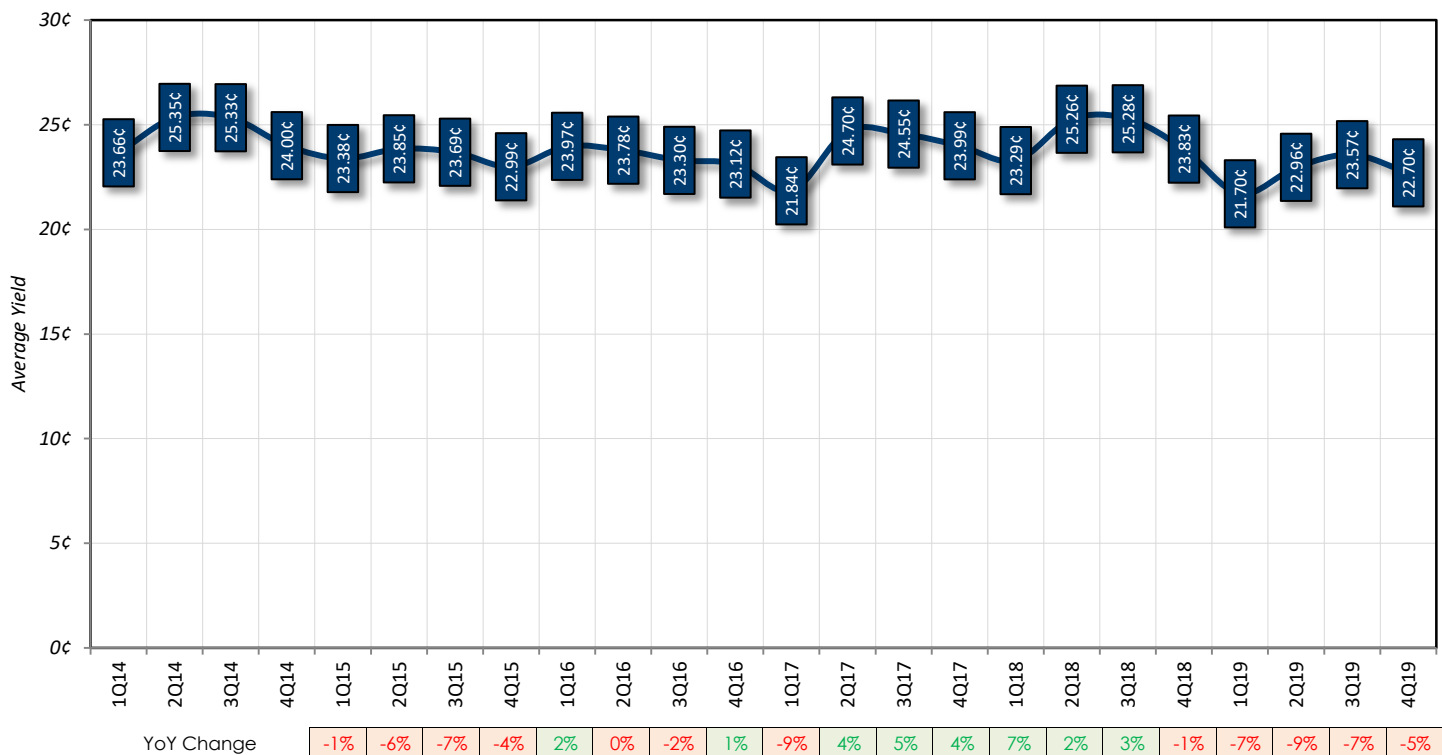
Average Domestic Fare by Quarter of Origin and Destination Passengers at North Dakota

1Q 2014 through 4Q 2019



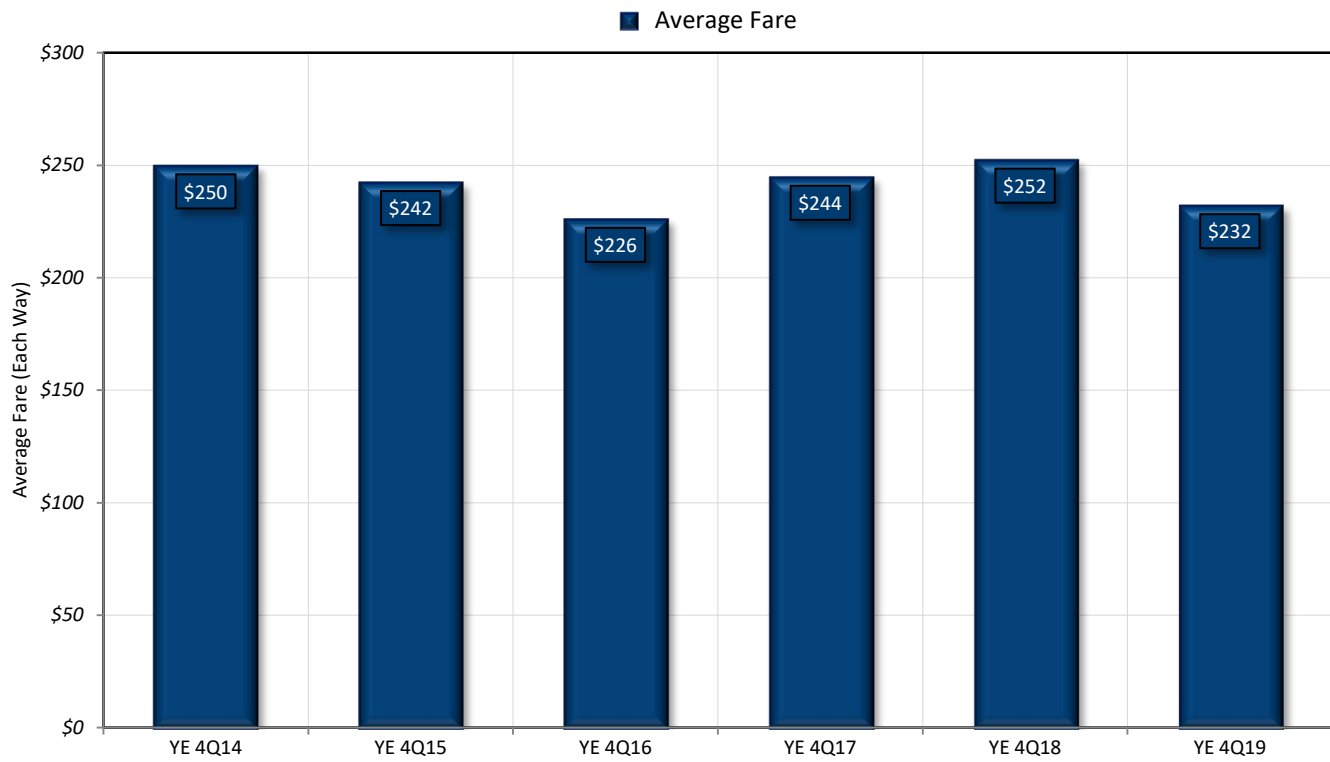
Average Domestic Yield by Quarter of Origin and Destination Passengers at North Dakota

1Q 2014 through 4Q 2019



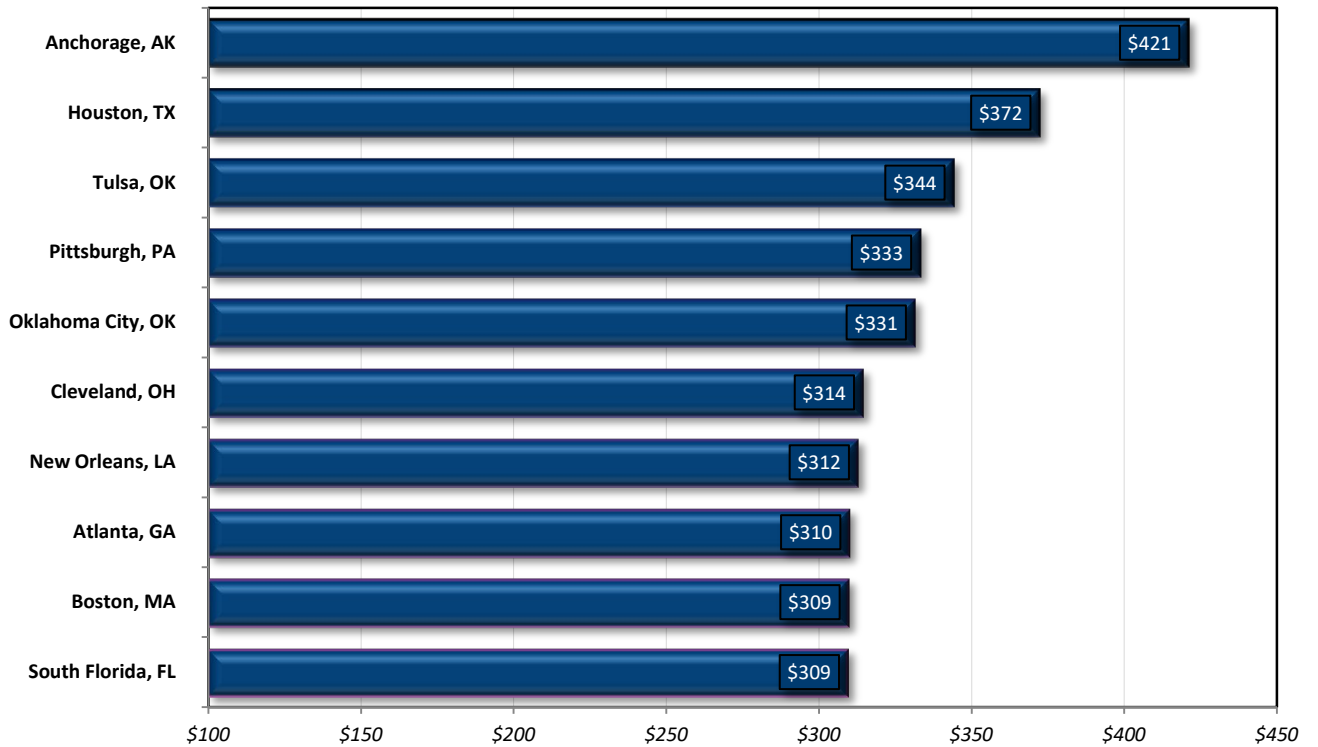
Six Year Trend of Domestic Origin and Destination Average Fares at North Dakota

YE 4Q14 to YE 4Q19



Top 10 Domestic Origin and Destination Average Fare Markets at North Dakota

Calendar Year 2019



Top 50 Domestic Origin and Destination Average Fare Markets at North Dakota Ranked by Calendar Year 2019

Approximates 100% Sample - Directional Journeyed Fares

Rank	Airport	1Q19	2Q19	Average Fare		YE 4Q19	Yield	Fare	Change
				3Q19	4Q19		YE 4Q19	YE 4Q18	18-19
1	Anchorage, AK	\$435	\$438	\$417	\$394	\$421	14.82¢	\$412	↑ 2.1%
2	Houston, TX	\$347	\$379	\$381	\$376	\$372	28.35¢	\$421	↓ -11.7%
3	Tulsa, OK	\$308	\$340	\$360	\$355	\$344	32.34¢	\$398	↓ -13.6%
4	Pittsburgh, PA	\$314	\$331	\$340	\$344	\$333	29.06¢	\$353	↓ -5.7%
5	Oklahoma City, OK	\$305	\$348	\$341	\$329	\$331	31.44¢	\$382	↓ -13.3%
6	Cleveland, OH	\$332	\$328	\$329	\$275	\$314	32.23¢	\$338	↓ -7.0%
7	New Orleans, LA	\$324	\$323	\$307	\$296	\$312	21.57¢	\$333	↓ -6.1%
8	Atlanta, GA	\$336	\$309	\$309	\$292	\$310	24.85¢	\$338	↓ -8.5%
9	Boston, MA	\$312	\$315	\$303	\$310	\$309	21.43¢	\$318	↓ -2.6%
10	South Florida, FL	\$310	\$316	\$309	\$303	\$309	16.66¢	\$317	↓ -2.5%
11	Salt Lake City, UT	\$317	\$296	\$312	\$305	\$307	27.36¢	\$310	→ -1.0%
12	Indianapolis, IN	\$307	\$321	\$300	\$286	\$304	35.95¢	\$307	→ -1.1%
13	New York / Newark, NY-NJ	\$297	\$284	\$316	\$309	\$302	22.36¢	\$315	↓ -3.9%
14	Boise, ID	\$321	\$318	\$288	\$283	\$301	22.92¢	\$311	↓ -3.0%
15	Albuquerque, NM	\$300	\$299	\$325	\$274	\$301	27.59¢	\$293	↑ 2.5%
16	Detroit, MI	\$307	\$292	\$330	\$269	\$298	34.59¢	\$301	→ -0.9%
17	Portland, OR	\$301	\$304	\$293	\$294	\$297	18.56¢	\$301	→ -1.2%
18	Sacramento, CA	\$315	\$291	\$298	\$288	\$297	18.33¢	\$312	↓ -4.8%
19	San Antonio, TX	\$313	\$293	\$289	\$293	\$297	22.20¢	\$372	↓ -20.2%
20	Philadelphia / Trenton, PA-NJ	\$328	\$294	\$286	\$284	\$295	22.66¢	\$312	↓ -5.5%
21	Charlotte, NC	\$334	\$278	\$300	\$280	\$293	22.65¢	\$307	↓ -4.6%
22	Spokane, WA	\$312	\$319	\$275	\$276	\$292	20.70¢	\$315	↓ -7.3%
23	San Francisco Bay, CA	\$294	\$290	\$285	\$297	\$291	17.00¢	\$302	↓ -3.7%
24	Raleigh / Durham, NC	\$313	\$268	\$278	\$308	\$290	21.74¢	\$305	↓ -4.9%
25	Washington / Baltimore, DC-MD	\$305	\$287	\$292	\$279	\$289	23.64¢	\$306	↓ -5.3%

continued on page 17

source: US DOT Table DB1B

Top 50 Domestic Origin and Destination Average Fare Markets at North Dakota Ranked by Calendar Year 2019

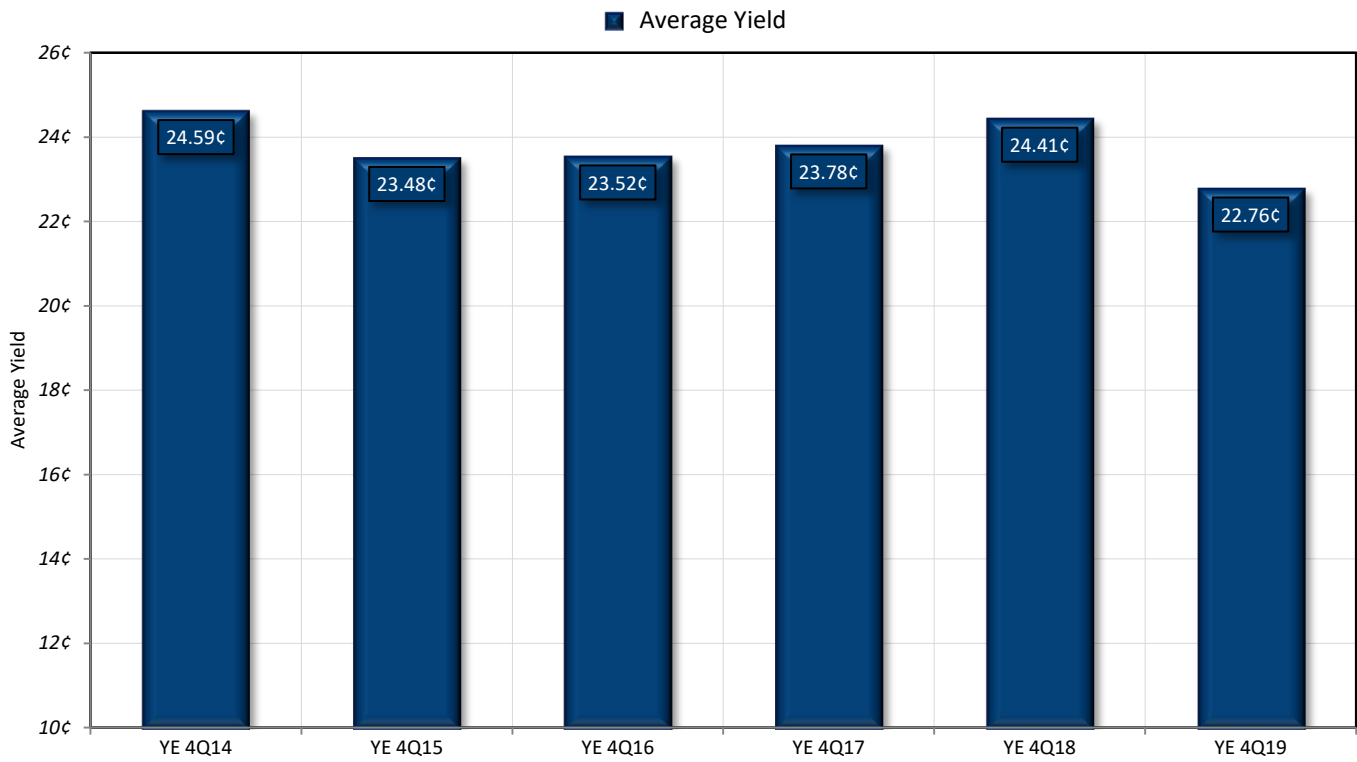
Approximates 100% Sample - Directional Journeyed Passengers

Rank	Market	Average Fare				YE 4Q19	Yield YE 4Q19	Fare YE 4Q18	Change 18-19
		1Q19	2Q19	3Q19	4Q19				
26	Memphis, TN	\$286	\$292	\$296	\$282	\$289	25.63¢	\$327	↓ -11.4%
27	Tampa / St. Petersburg, FL	\$290	\$295	\$295	\$277	\$289	17.27¢	\$320	↓ -9.7%
28	Jacksonville, FL	\$319	\$294	\$265	\$278	\$289	17.86¢	\$347	↓ -16.9%
29	Omaha, NE	\$286	\$277	\$311	\$277	\$288	44.18¢	\$309	↓ -6.8%
30	San Diego, CA	\$290	\$287	\$291	\$281	\$287	18.08¢	\$310	↓ -7.3%
31	Cincinnati, OH	\$281	\$300	\$296	\$264	\$286	30.01¢	\$324	↓ -11.7%
32	Austin, TX	\$283	\$275	\$273	\$305	\$283	21.92¢	\$341	↓ -16.9%
33	Columbus, OH	\$300	\$266	\$292	\$270	\$282	28.69¢	\$310	↓ -9.2%
34	Seattle / Tacoma, WA	\$280	\$281	\$279	\$283	\$281	17.65¢	\$300	↓ -6.6%
35	Grand Rapids, MI	\$277	\$275	\$282	\$287	\$281	36.13¢	\$295	↓ -4.7%
36	Fort Myers, FL	\$291	\$273	\$254	\$279	\$280	16.86¢	\$295	↓ -5.0%
37	Kansas City, MO	\$280	\$270	\$286	\$275	\$278	36.65¢	\$304	↓ -8.6%
38	St. Louis, MO	\$251	\$279	\$316	\$253	\$276	33.80¢	\$296	↓ -6.7%
39	Los Angeles Basin, CA	\$297	\$257	\$266	\$293	\$276	18.18¢	\$281	↔ -1.9%
40	Milwaukee, WI	\$275	\$267	\$291	\$261	\$273	44.40¢	\$300	↓ -8.8%
41	Hartford, CT	\$284	\$258	\$269	\$279	\$271	19.99¢	\$303	↓ -10.7%
42	Nashville, TN	\$279	\$283	\$260	\$255	\$267	25.02¢	\$303	↓ -11.9%
43	Madison, WI	\$279	\$247	\$273	\$246	\$260	44.97¢	\$284	↓ -8.4%
44	Dallas / Ft Worth, TX	\$282	\$249	\$227	\$229	\$246	28.89¢	\$238	↑ 3.1%
45	Chicago, IL	\$269	\$244	\$241	\$227	\$242	41.87¢	\$243	↔ -0.3%
46	Minneapolis / St. Paul, MN	\$194	\$196	\$174	\$162	\$179	62.39¢	\$198	↓ -9.4%
47	Orlando / Sanford, FL	\$159	\$148	\$179	\$180	\$164	13.84¢	\$163	↔ 0.5%
48	Denver, CO	\$131	\$109	\$137	\$155	\$135	35.64¢	\$152	↓ -11.5%
49	Las Vegas, NV	\$80	\$75	\$89	\$92	\$84	14.98¢	\$85	↔ -1.4%
50	Phoenix / Mesa, AZ	\$63	\$69	\$85	\$77	\$71	14.89¢	\$101	↓ -29.4%
Average of All Markets		\$218	\$235	\$246	\$228	\$232	22.53¢	\$252	↓ -8.1%

source: US DOT Table DB1B

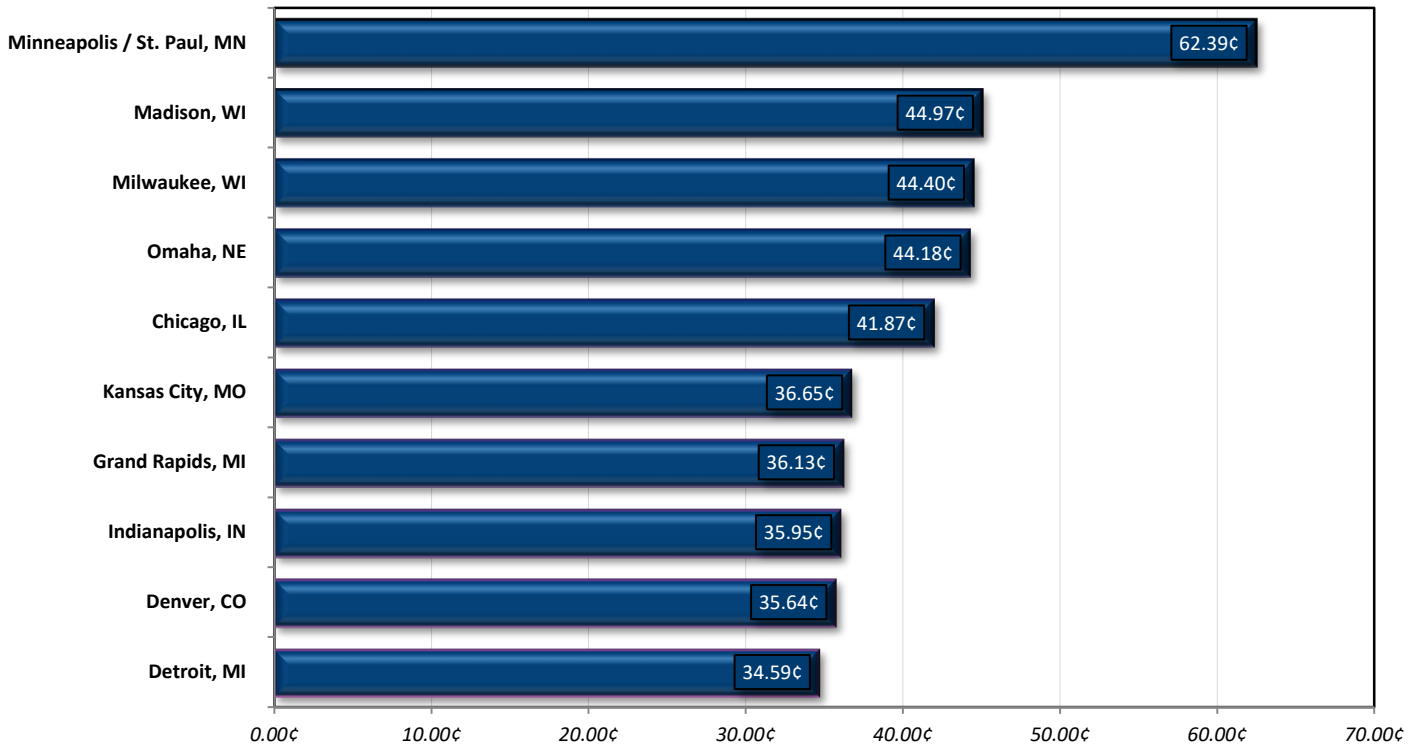
Six Year Trend of Domestic Origin and Destination Average Yields at North Dakota

YE 4Q14 to YE 4Q19



Top 10 Domestic Origin and Destination Average Yield Markets at North Dakota

Calendar Year 2019



Top 50 Domestic Origin and Destination Average Yield Markets at North Dakota Ranked by Calendar Year 2019

Approximates 100% Sample - Average Fare per Itinerary Mile

Rank	Airport	1Q19	2Q19	Average Yield		Fare	Yield	Change
				3Q19	4Q19	YE 4Q19	YE 4Q18	18-19
1	Minneapolis / St. Paul, MN	67.27¢	68.15¢	59.87¢	57.36¢	62.39¢	\$179	68.31¢ ↓ -8.7%
2	Madison, WI	46.49¢	45.35¢	44.65¢	43.81¢	44.97¢	\$260	51.57¢ ↓ -12.8%
3	Milwaukee, WI	45.60¢	43.07¢	47.17¢	42.09¢	44.40¢	\$273	48.69¢ ↓ -8.8%
4	Omaha, NE	43.21¢	43.65¢	47.58¢	42.24¢	44.18¢	\$288	48.37¢ ↓ -8.7%
5	Chicago, IL	45.07¢	42.30¢	41.64¢	39.63¢	41.87¢	\$242	43.17¢ ↓ -3.0%
6	Kansas City, MO	36.88¢	35.71¢	37.65¢	36.35¢	36.65¢	\$278	39.41¢ ↓ -7.0%
7	Grand Rapids, MI	35.37¢	36.19¢	35.59¢	37.26¢	36.13¢	\$281	37.44¢ ↓ -3.5%
8	Indianapolis, IN	36.61¢	37.64¢	35.80¢	33.85¢	35.95¢	\$304	36.76¢ ↓ -2.2%
9	Denver, CO	34.85¢	31.89¢	37.24¢	36.98¢	35.64¢	\$135	40.15¢ ↓ -11.2%
10	Detroit, MI	35.80¢	33.80¢	37.28¢	32.01¢	34.59¢	\$298	35.55¢ ↓ -2.7%
11	St. Louis, MO	29.14¢	34.29¢	39.28¢	31.31¢	33.80¢	\$276	37.20¢ ↓ -9.1%
12	Tulsa, OK	28.83¢	30.92¢	34.42¢	34.21¢	32.34¢	\$344	37.34¢ ↓ -13.4%
13	Cleveland, OH	33.91¢	32.48¢	33.93¢	29.09¢	32.23¢	\$314	33.89¢ ↓ -4.9%
14	Oklahoma City, OK	29.10¢	32.91¢	31.89¢	31.65¢	31.44¢	\$331	36.33¢ ↓ -13.5%
15	Cincinnati, OH	30.35¢	30.57¢	30.59¢	28.39¢	30.01¢	\$286	33.93¢ ↓ -11.6%
16	Pittsburgh, PA	27.06¢	28.76¢	29.84¢	30.33¢	29.06¢	\$333	31.39¢ ↓ -7.4%
17	Dallas / Ft Worth, TX	30.88¢	29.87¢	27.85¢	27.11¢	28.89¢	\$246	29.59¢ ↓ -2.4%
18	Columbus, OH	30.10¢	27.75¢	29.55¢	27.30¢	28.69¢	\$282	31.46¢ ↓ -8.8%
19	Houston, TX	27.26¢	28.42¢	28.68¢	28.75¢	28.35¢	\$372	31.43¢ ↓ -9.8%
20	Albuquerque, NM	27.95¢	27.34¢	29.54¢	25.37¢	27.59¢	\$301	27.64¢ → -0.2%
21	Salt Lake City, UT	28.16¢	26.85¢	27.49¢	27.12¢	27.36¢	\$307	28.35¢ ↓ -3.5%
22	Memphis, TN	25.72¢	26.44¢	25.74¢	24.80¢	25.63¢	\$289	29.74¢ ↓ -13.8%
23	Nashville, TN	25.01¢	25.82¢	25.38¢	24.08¢	25.02¢	\$267	27.90¢ ↓ -10.3%
24	Atlanta, GA	26.36¢	25.03¢	24.51¢	23.89¢	24.85¢	\$310	26.99¢ ↓ -7.9%
25	Washington / Baltimore, DC-MD	25.39¢	23.46¢	23.61¢	22.70¢	23.64¢	\$289	24.91¢ ↓ -5.1%

continued on page 20

source: US DOT Table DB1B

Top 50 Domestic Origin and Destination Average Yield Markets at North Dakota Ranked by Calendar Year 2019

Approximates 100% Sample - Average Fare per Itinerary Mile

Rank	Market	Average Yield				YE 4Q19	Fare YE 4Q19	Yield YE 4Q18	Change 18-19
		1Q19	2Q19	3Q19	4Q19				
26	Boise, ID	24.54¢	24.29¢	21.77¢	21.38¢	22.92¢	\$301	24.53¢	↓ -6.6%
27	Philadelphia / Trenton, PA-NJ	24.55¢	22.41¢	22.21¢	22.08¢	22.66¢	\$295	23.95¢	↓ -5.4%
28	Charlotte, NC	24.82¢	21.36¢	23.18¢	22.17¢	22.65¢	\$293	23.86¢	↓ -5.1%
29	New York / Newark, NY-NJ	22.10¢	21.22¢	23.13¢	22.78¢	22.36¢	\$302	23.48¢	↓ -4.8%
30	San Antonio, TX	23.83¢	21.64¢	21.90¢	21.63¢	22.20¢	\$297	27.24¢	↓ -18.5%
31	Austin, TX	21.80¢	20.97¢	21.36¢	23.77¢	21.92¢	\$283	25.67¢	↓ -14.6%
32	Raleigh / Durham, NC	22.81¢	20.15¢	21.44¢	22.70¢	21.74¢	\$290	22.93¢	↓ -5.2%
33	New Orleans, LA	22.04¢	22.09¢	21.08¢	21.00¢	21.57¢	\$312	23.29¢	↓ -7.4%
34	Boston, MA	21.47¢	21.88¢	21.31¢	21.08¢	21.43¢	\$309	21.83¢	↔ -1.8%
35	Spokane, WA	21.73¢	22.77¢	19.53¢	19.69¢	20.70¢	\$292	22.48¢	↓ -7.9%
36	Hartford, CT	20.31¢	19.08¢	19.99¢	20.85¢	19.99¢	\$271	21.88¢	↓ -8.6%
37	Portland, OR	18.86¢	18.87¢	18.59¢	18.07¢	18.56¢	\$297	18.93¢	↔ -2.0%
38	Sacramento, CA	19.39¢	17.85¢	18.31¢	18.04¢	18.33¢	\$297	19.32¢	↓ -5.1%
39	Los Angeles Basin, CA	18.24¢	17.64¢	18.26¢	18.62¢	18.18¢	\$276	18.74¢	↓ -3.0%
40	San Diego, CA	18.19¢	18.02¢	18.11¢	17.99¢	18.08¢	\$287	19.25¢	↓ -6.1%
41	Jacksonville, FL	19.74¢	17.96¢	16.49¢	17.37¢	17.86¢	\$289	21.94¢	↓ -18.6%
42	Seattle / Tacoma, WA	17.64¢	17.57¢	17.92¢	17.39¢	17.65¢	\$281	19.02¢	↓ -7.2%
43	Tampa / St. Petersburg, FL	17.53¢	17.20¢	17.09¢	17.22¢	17.27¢	\$289	19.12¢	↓ -9.7%
44	San Francisco Bay, CA	17.27¢	17.24¢	16.55¢	17.10¢	17.00¢	\$291	18.03¢	↓ -5.7%
45	Fort Myers, FL	17.26¢	15.72¢	14.75¢	17.85¢	16.86¢	\$280	17.54¢	↓ -3.9%
46	South Florida, FL	16.92¢	16.97¢	16.39¢	16.22¢	16.66¢	\$309	17.59¢	↓ -5.3%
47	Las Vegas, NV	14.26¢	14.55¢	15.64¢	15.59¢	14.98¢	\$84	15.19¢	↔ -1.4%
48	Phoenix / Mesa, AZ	14.74¢	14.97¢	15.49¢	14.65¢	14.89¢	\$71	16.15¢	↓ -7.8%
49	Anchorage, AK	14.89¢	15.36¢	15.13¢	13.45¢	14.82¢	\$421	14.34¢	↑ 3.4%
50	Orlando / Sanford, FL	13.91¢	13.39¢	13.50¢	14.47¢	13.84¢	\$164	14.16¢	↓ -2.2%
Average of All Markets		21.62¢	22.65¢	23.32¢	22.43¢	22.53¢	\$232	23.93¢	↓ -5.8%

source: US DOT Table DB1B

Top Domestic Origin and Destination Passenger Airlines at North Dakota Ranked by Calendar Year 2019

Approximates 100% Sample - Directional Journeyed Passengers

Rank	Airline	Total Passengers				YE 4Q19	PDEW YE 4Q19	Paxs YE 4Q18	Change 18-19
		1Q19	2Q19	3Q19	4Q19				
1	Delta	175,460	220,160	243,460	239,720	878,800	1,203.8	838,540	↑ 4.8%
2	United	111,120	135,720	139,840	140,520	527,200	722.2	456,520	↑ 15.5%
3	Allegiant	156,520	101,560	74,740	111,640	444,460	608.8	394,360	↑ 12.7%
4	American	45,240	52,860	53,440	54,960	206,500	282.9	186,860	↑ 10.5%
5	Frontier	9,540	16,920	23,760	19,940	70,160	96.1	58,860	↑ 19.2%
6									
7									
8									
9									
10									
Total of All Airlines		505,220	534,460	543,180	575,960	2,158,821	2,957	1,967,760	↑ 9.7%

Top Domestic Origin and Destination Revenue Airlines at North Dakota Ranked by Calendar Year 2019

Approximates 100% Sample - Directional Journeyed Revenue (\$thousands)

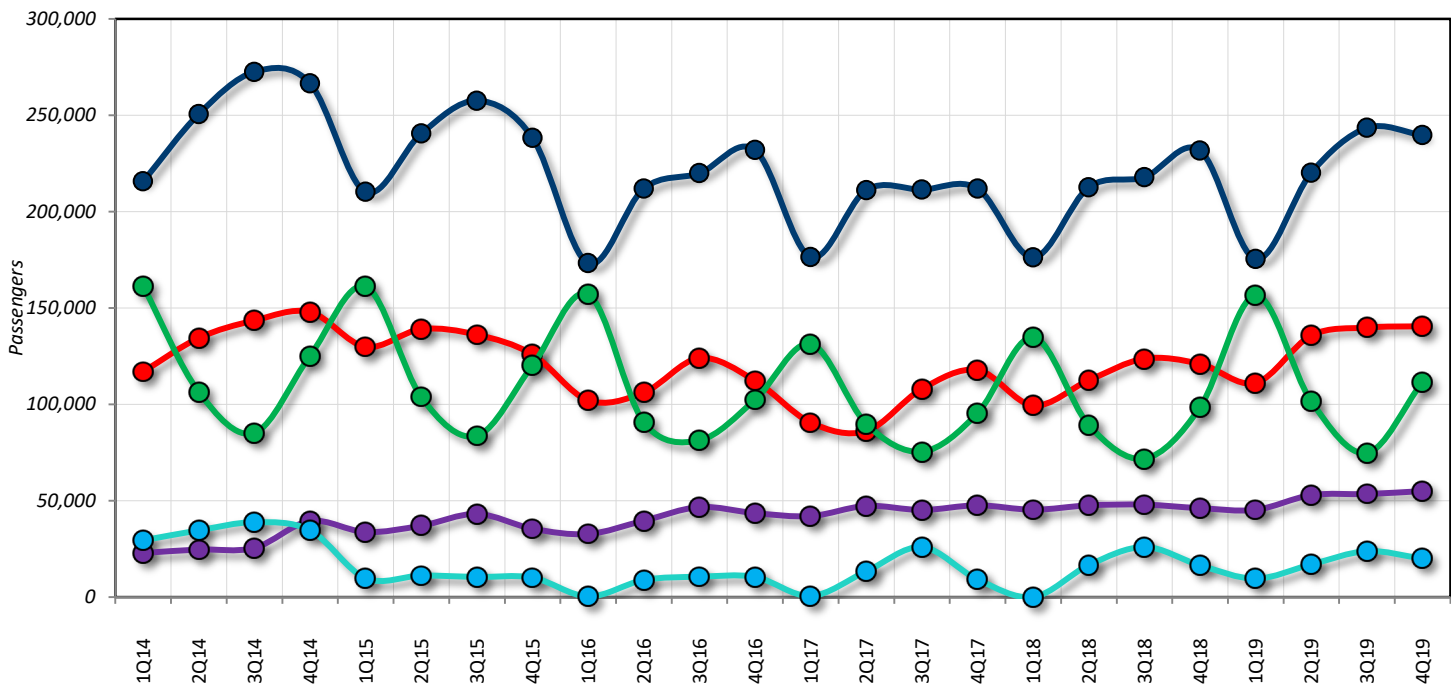
Rank	Airport	Total Revenue				YE 4Q19	RDEW YE 4Q19	Revs YE 4Q18	Change 18-19
		1Q19	2Q19	3Q19	4Q19				
1	Delta	\$53,604	\$65,663	\$71,983	\$68,932	\$260,182	\$356.413	\$263,806	→ -1.4%
2	United	\$33,804	\$39,499	\$41,700	\$39,256	\$154,260	\$211.315	\$148,323	↑ 4.0%
3	American	\$12,727	\$13,572	\$13,396	\$13,746	\$53,441	\$73.206	\$48,751	↑ 9.6%
4	Allegiant	\$7,017	\$3,793	\$3,061	\$5,631	\$19,501	\$26.714	\$21,239	↓ -8.2%
5	Frontier	\$247	\$535	\$873	\$529	\$2,184	\$2.992	\$2,537	↓ -13.9%
6									
7									
8									
9									
10									
Total of All Markets		\$110,054	\$125,336	\$133,695	\$131,258	\$500,344	\$685.403	\$496,019	→ 0.9%

source: US DOT Table DB1B

Total Domestic Passengers by Airline and Quarter at North Dakota

1Q 2014 through 4Q 2019

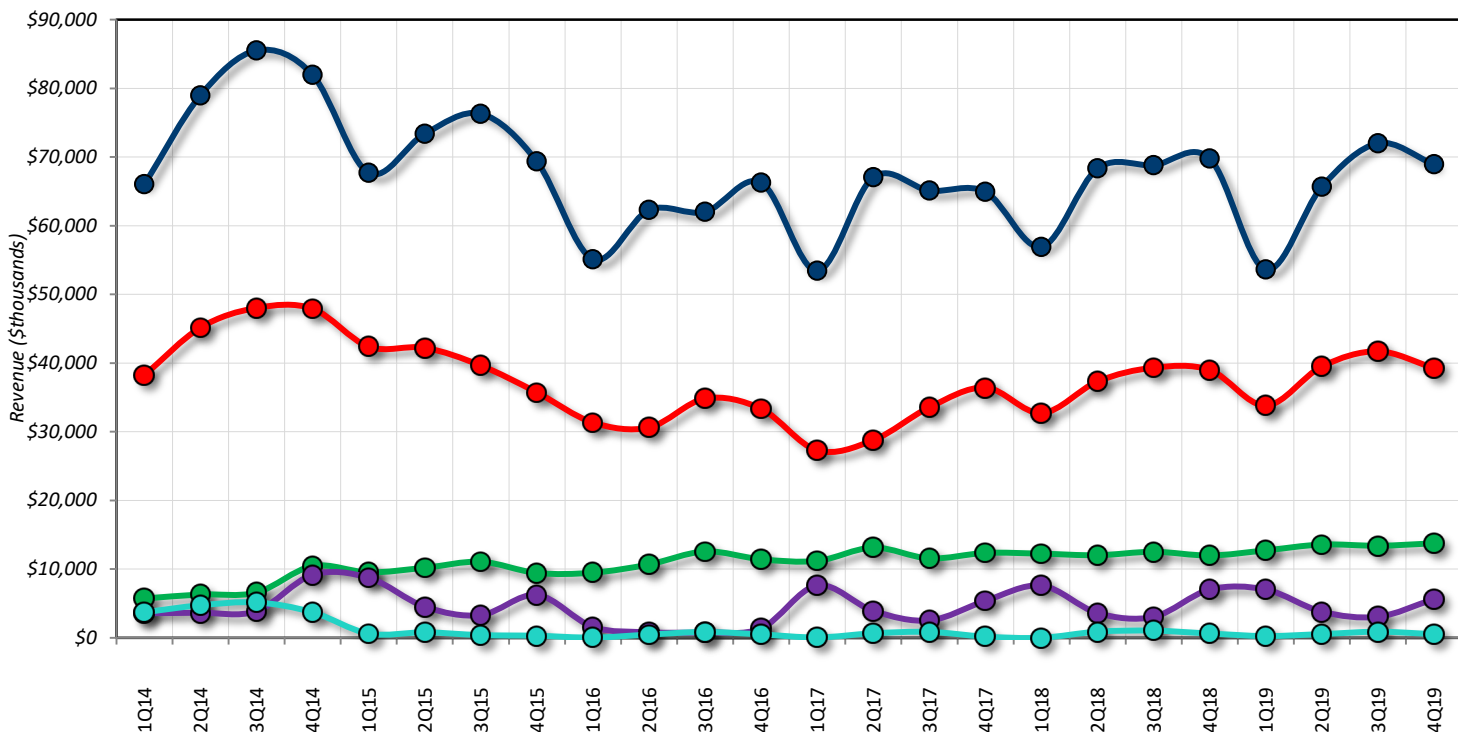
Delta United Allegiant American Frontier



Total Domestic Revenue by Airline and Quarter at North Dakota

1Q 2014 through 4Q 2019

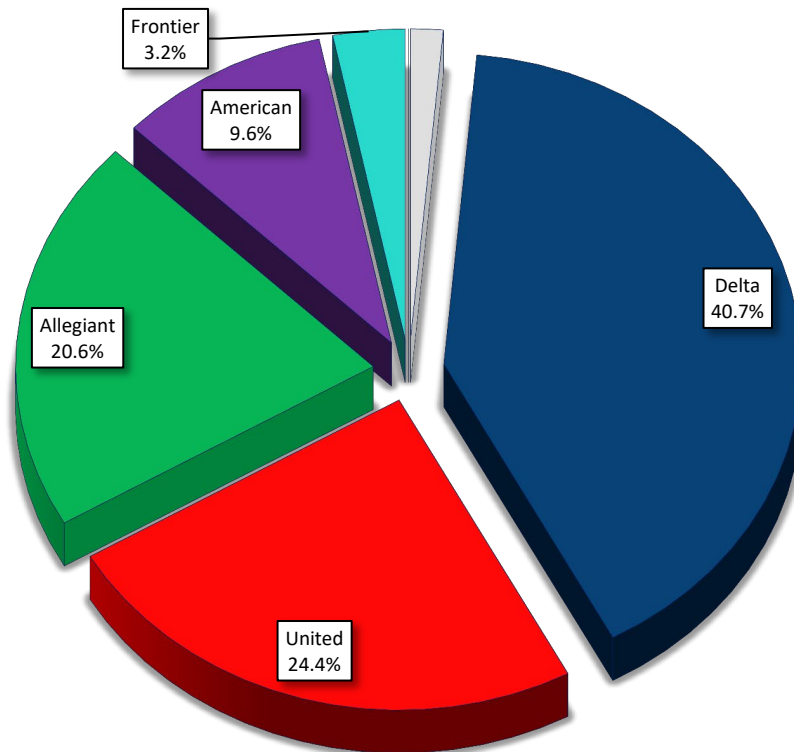
Delta United American Allegiant Frontier



Airline Shares of Domestic Origin and Destination Passengers at North Dakota

Calendar Year 2019

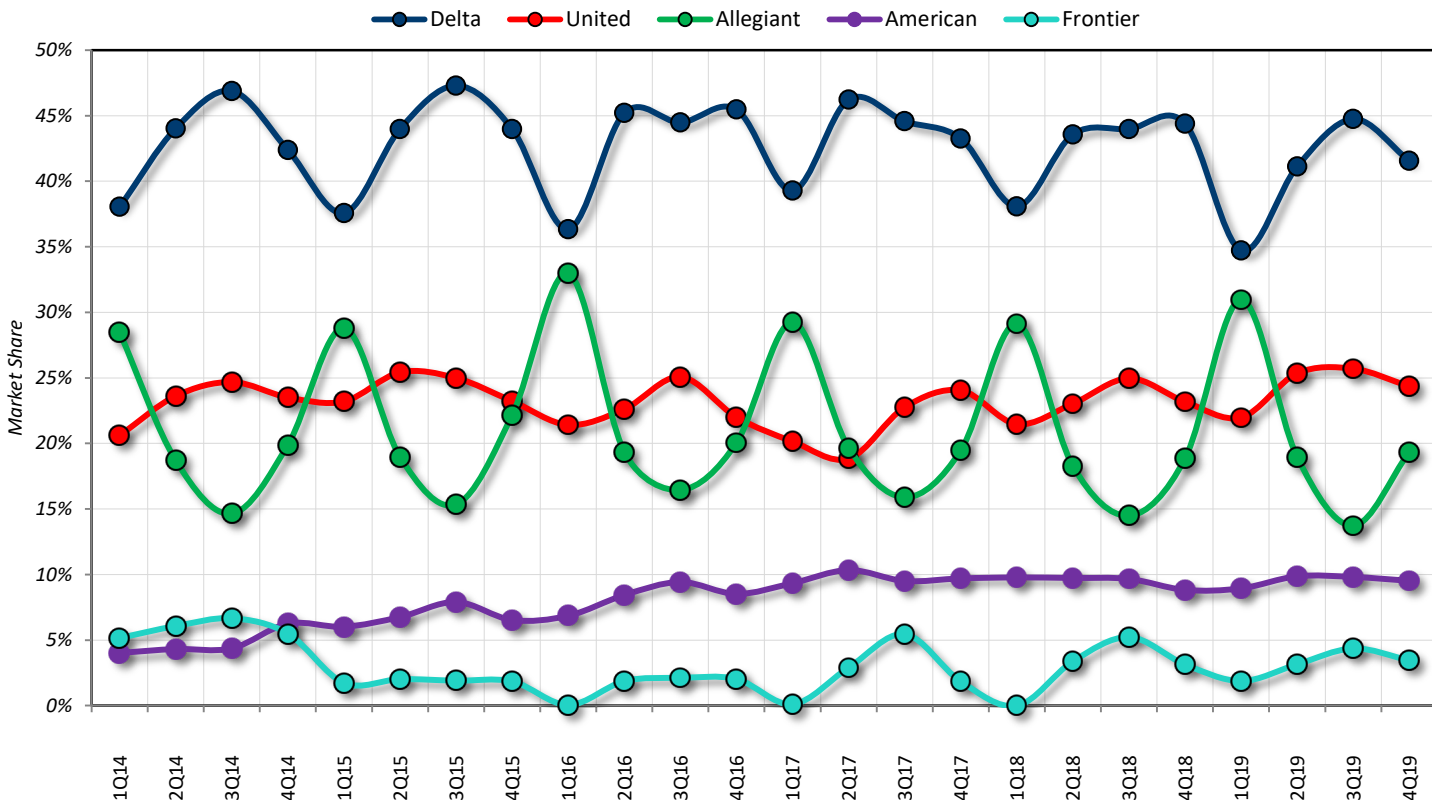
Rank	Airline	CY 2018
1	Delta	878,800
2	United	527,200
3	Allegiant	444,460
4	American	206,500
5	Frontier	70,160
10		



Total Passengers 2,158,821

Airline Market Share by Quarter of Domestic Origin and Destination Passengers at North Dakota

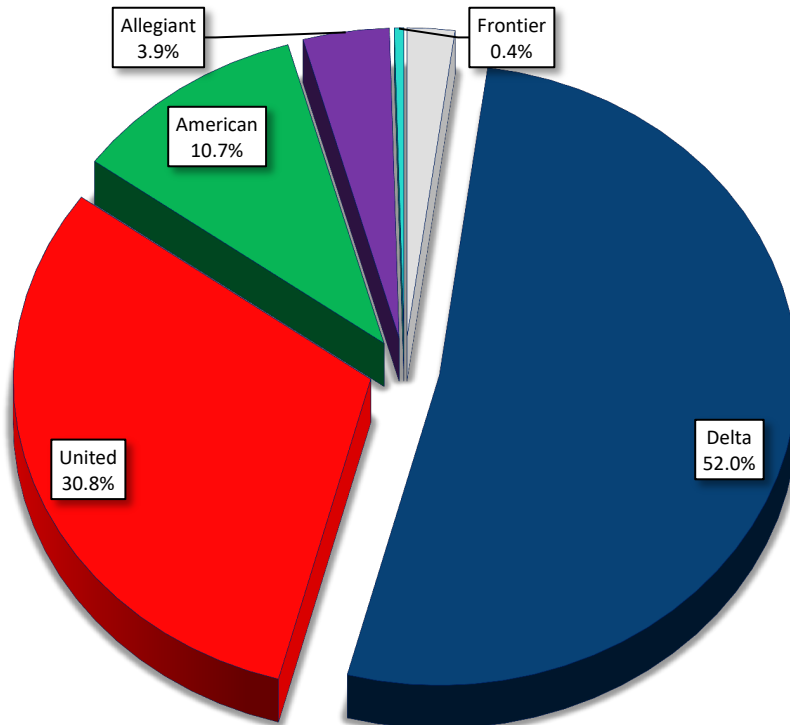
1Q 2014 through 4Q 2019



Airline Shares of Domestic Origin and Destination Revenue at North Dakota

Calendar Year 2019 - Revenue in \$thousands

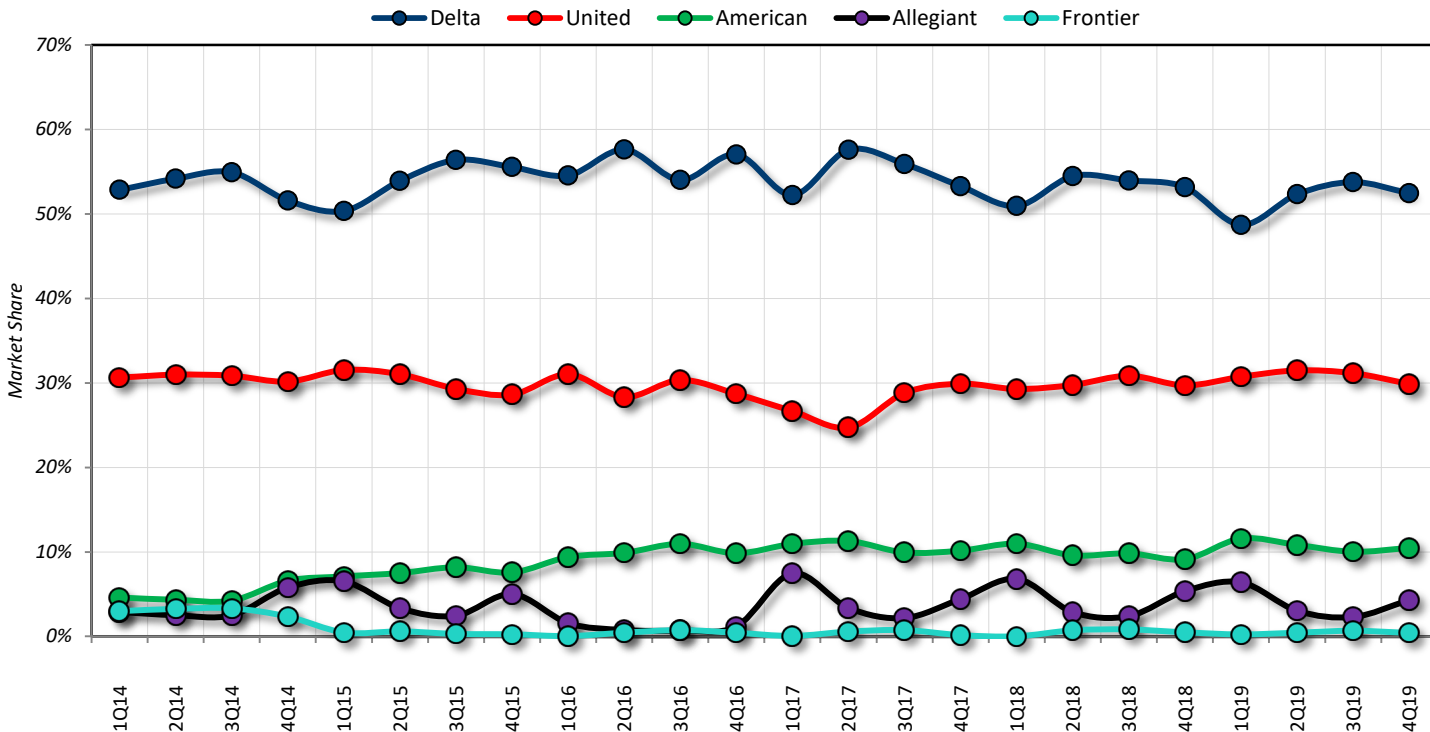
Rank	Airline	CY 2018
1	Delta	\$260,182
2	United	\$154,260
3	American	\$53,441
4	Allegiant	\$19,501
5	Frontier	\$2,184



Total Revenue \$500,344

Airline Market Share by Quarter of Domestic Origin and Destination Revenue at North Dakota

1Q 2014 through 4Q 2019



Top 52 Domestic Origin and Destination Passenger States / Territories Ranked by Calendar Year 2019

Approximates 100% Sample - Outbound Passengers

Rank	State / Territory	Outbound Passengers				YE 4Q19	PDEW YE 4Q19	Paxs YE 4Q18	Change 18-19
		1Q19	2Q19	3Q19	4Q19				
1	California	18,227,730	21,729,290	21,689,550	21,191,700	82,838,270	226,954	81,206,040	↑ 2.0%
2	Florida	17,765,700	17,179,220	14,454,380	17,273,930	66,673,230	182,666	62,698,080	↑ 6.3%
3	Texas	10,653,800	12,773,370	12,307,710	12,665,250	48,400,130	132,603	46,192,600	↑ 4.8%
4	New York	7,121,130	8,506,040	8,361,880	8,290,470	32,279,520	88,437	31,373,420	↑ 2.9%
5	Illinois	5,528,720	6,915,930	6,872,350	6,723,340	26,040,340	71,343	25,528,050	↑ 2.0%
6	Colorado	4,932,270	5,429,840	5,887,130	5,451,900	21,701,140	59,455	20,308,940	↑ 6.9%
7	Nevada	4,855,540	5,375,300	5,256,800	5,275,420	20,763,060	56,885	19,995,600	↑ 3.8%
8	Georgia	4,212,220	5,128,160	4,955,910	5,091,690	19,387,980	53,118	18,893,580	↑ 2.6%
9	Virginia	3,978,750	5,044,810	4,739,210	4,882,400	18,645,170	51,083	17,933,330	↑ 4.0%
10	Washington	3,640,640	4,716,490	5,198,420	4,551,760	18,107,310	49,609	17,356,880	↑ 4.3%
11	Arizona	4,397,180	4,244,360	3,601,040	4,499,000	16,741,580	45,867	16,000,330	↑ 4.6%
12	Pennsylvania	3,346,480	4,087,020	4,060,810	4,046,240	15,540,550	42,577	14,730,200	↑ 5.5%
13	Massachusetts	3,198,560	4,106,290	4,121,970	3,903,050	15,329,870	42,000	14,739,710	↑ 4.0%
14	North Carolina	3,179,890	4,118,230	4,090,800	4,196,430	15,585,350	42,700	14,015,800	↑ 11.2%
15	New Jersey	3,028,960	3,561,200	3,487,750	3,721,130	13,799,040	37,806	13,256,370	↑ 4.1%
16	Hawaii	2,887,490	3,389,970	3,408,660	3,196,100	12,882,220	35,294	12,017,850	↑ 7.2%
17	Michigan	2,737,310	3,012,790	3,117,360	3,116,920	11,984,380	32,834	11,483,350	↑ 4.4%
18	Missouri	2,381,190	2,930,950	2,877,180	2,845,780	11,035,100	30,233	10,836,390	→ 1.8%
19	Tennessee	2,254,120	2,869,690	2,797,110	2,925,370	10,846,290	29,716	9,738,820	↑ 11.4%
20	Minnesota	2,505,690	2,725,510	2,858,970	2,708,590	10,798,760	29,586	10,401,790	↑ 3.8%
21	Ohio	2,065,110	2,484,420	2,411,310	2,379,320	9,340,160	25,589	8,964,270	↑ 4.2%
22	Oregon	1,938,170	2,409,840	2,624,650	2,385,530	9,358,190	25,639	9,165,010	↑ 2.1%
23	Maryland	1,818,160	2,423,570	2,347,760	2,373,880	8,963,370	24,557	8,867,350	→ 1.1%
24	Utah	1,887,180	1,805,260	1,886,590	1,830,250	7,409,280	20,299	7,139,450	↑ 3.8%
25	Louisiana	1,712,120	1,935,180	1,694,450	1,931,800	7,273,550	19,928	6,969,120	↑ 4.4%

continued on page 26

Top 52 Domestic Origin and Destination Passenger States / Territories Ranked by Calendar Year 2019

Approximates 100% Sample - Directional Journeyed Passengers

Rank	State / Territory	Outbound Passengers				YE 4Q19	PDEW YE 4Q19	Paxs YE 4Q18	Change 18-19
		1Q19	2Q19	3Q19	4Q19				
26	Kentucky	1,323,960	1,681,550	1,618,040	1,602,950	6,226,500	17,059	5,871,940	6.0%
27	South Carolina	984,820	1,493,090	1,464,330	1,277,140	5,219,380	14,300	4,750,550	9.9%
28	Indiana	1,158,780	1,335,830	1,250,790	1,325,970	5,071,370	13,894	4,929,280	2.9%
29	Wisconsin	1,161,360	1,296,850	1,332,860	1,271,190	5,062,260	13,869	4,934,300	2.6%
30	Puerto Rico	997,050	1,094,090	1,023,610	1,096,280	4,211,030	11,537	3,570,810	17.9%
31	Oklahoma	700,540	894,620	863,730	861,940	3,320,830	9,098	3,271,040	1.5%
32	Alaska	571,830	839,720	1,098,680	691,190	3,201,420	8,771	3,089,980	3.6%
33	Connecticut	709,740	842,350	794,980	807,650	3,154,720	8,643	3,065,790	2.9%
34	New Mexico	527,080	687,180	709,800	703,350	2,627,410	7,198	2,625,160	0.1%
35	Alabama	564,950	667,100	635,940	671,740	2,539,730	6,958	2,279,490	11.4%
36	Nebraska	547,700	662,230	619,600	612,380	2,441,910	6,690	2,400,220	1.7%
37	Idaho	498,550	554,600	616,440	592,730	2,262,320	6,198	2,155,530	5.0%
38	Montana	447,280	541,150	731,120	502,840	2,222,390	6,089	2,020,710	10.0%
39	Iowa	445,090	512,910	498,930	510,150	1,967,080	5,389	1,818,700	8.2%
40	Rhode Island	398,930	476,850	499,190	486,110	1,861,080	5,099	1,919,730	-3.1%
41	Arkansas	387,520	499,530	493,950	493,150	1,874,150	5,135	1,688,850	11.0%
42	Maine	244,890	331,860	452,620	306,770	1,336,140	3,661	1,300,650	2.7%
43	North Dakota	252,630	267,620	272,000	288,350	1,080,600	2,961	983,880	9.8%
44	Kansas	188,520	242,660	224,270	230,430	885,880	2,427	831,790	6.5%
45	New Hampshire	200,620	236,200	224,610	216,930	878,360	2,406	946,940	-7.2%
46	South Dakota	175,320	225,560	240,470	232,330	873,680	2,394	752,710	16.1%
47	Mississippi	189,580	221,510	212,560	221,260	844,910	2,315	760,950	11.0%
48	U.S. Virgin Islands	176,650	178,660	145,020	148,300	648,630	1,777	481,480	34.7%
49	Vermont	132,180	154,940	188,740	158,840	634,700	1,739	602,640	5.3%
50	Wyoming	149,990	138,200	217,270	119,280	624,740	1,712	530,130	17.8%
51	West Virginia	68,550	100,780	93,750	85,260	348,340	954	321,840	8.2%
52	Pacific Trust Terr.	35,800	44,780	41,750	37,220	159,550	437	131,080	21.7%
Total of All Markets		133,494,020	155,125,150	151,674,800	153,008,980	593,302,950	1,625,488	567,848,500	4.5%

source: US DOT Table DB1B

Top 52 Domestic Origin and Destination Revenue States / Territories Ranked by Calendar Year 2019

Approximates 100% Sample - Directional Journeyed Passengers

Rank	State / Territory	Total Revenue				YE 4Q19	RDEW YE 4Q19	Revs YE 4Q18	Change 18-19
		1Q19	2Q19	3Q19	4Q19				
1	California	\$1,989,404	\$2,449,169	\$2,255,878	\$2,439,388	\$9,133,839	\$25,024	\$8,667,420	↑ 5.4%
2	Florida	\$1,711,377	\$1,652,061	\$1,296,101	\$1,661,725	\$6,321,264	\$17,319	\$5,888,128	↑ 7.4%
3	Texas	\$1,346,269	\$1,671,320	\$1,452,148	\$1,566,651	\$6,036,387	\$16,538	\$5,621,187	↑ 7.4%
4	New York	\$802,280	\$1,027,419	\$971,067	\$1,053,242	\$3,854,008	\$10,559	\$3,710,646	↑ 3.9%
5	Virginia	\$594,461	\$787,956	\$702,519	\$747,225	\$2,832,161	\$7,759	\$2,661,866	↑ 6.4%
6	Illinois	\$542,241	\$681,248	\$632,822	\$635,564	\$2,491,876	\$6,827	\$2,389,805	↑ 4.3%
7	North Carolina	\$472,591	\$608,324	\$547,205	\$570,074	\$2,198,195	\$6,022	\$2,069,015	↑ 6.2%
8	Washington	\$415,414	\$561,661	\$588,911	\$539,593	\$2,105,578	\$5,769	\$1,986,484	↑ 6.0%
9	Pennsylvania	\$431,720	\$543,247	\$517,820	\$530,682	\$2,023,469	\$5,544	\$1,955,498	↑ 3.5%
10	Colorado	\$498,912	\$496,059	\$517,379	\$504,637	\$2,016,987	\$5,526	\$1,927,638	↑ 4.6%
11	Hawaii	\$489,206	\$530,859	\$485,970	\$519,029	\$2,025,064	\$5,548	\$2,041,087	→ -0.8%
12	Georgia	\$459,652	\$533,678	\$483,414	\$526,030	\$2,002,774	\$5,487	\$1,916,685	↑ 4.5%
13	Arizona	\$447,885	\$475,554	\$377,874	\$493,137	\$1,794,451	\$4,916	\$1,613,344	↑ 11.2%
14	Nevada	\$417,141	\$447,647	\$412,447	\$432,663	\$1,709,898	\$4,685	\$1,595,952	↑ 7.1%
15	Michigan	\$372,010	\$403,656	\$420,724	\$443,465	\$1,639,855	\$4,493	\$1,662,343	→ -1.4%
16	New Jersey	\$351,914	\$431,199	\$386,520	\$422,372	\$1,592,005	\$4,362	\$1,598,267	→ -0.4%
17	Massachusetts	\$319,697	\$439,793	\$420,256	\$421,188	\$1,600,935	\$4,386	\$1,511,920	↑ 5.9%
18	Tennessee	\$312,206	\$405,286	\$370,467	\$390,529	\$1,478,488	\$4,051	\$1,390,549	↑ 6.3%
19	Missouri	\$304,321	\$391,595	\$361,067	\$372,572	\$1,429,555	\$3,917	\$1,336,206	↑ 7.0%
20	Ohio	\$279,274	\$340,531	\$325,599	\$331,475	\$1,276,879	\$3,498	\$1,224,155	↑ 4.3%
21	Minnesota	\$329,067	\$338,970	\$318,685	\$319,599	\$1,306,321	\$3,579	\$1,321,227	→ -1.1%
22	Oregon	\$248,893	\$326,050	\$339,237	\$323,835	\$1,238,015	\$3,392	\$1,140,310	↑ 8.6%
23	Utah	\$274,139	\$242,329	\$246,251	\$250,534	\$1,013,254	\$2,776	\$958,330	↑ 5.7%
24	Louisiana	\$237,293	\$268,231	\$219,542	\$252,218	\$977,284	\$2,677	\$965,156	→ 1.3%
25	Kentucky	\$197,506	\$246,338	\$229,795	\$238,629	\$912,267	\$2,499	\$859,840	↑ 6.1%

continued on page 28

source: US DOT Table DB1B

Top 52 Domestic Origin and Destination Revenue States / Territories Ranked by Calendar Year 2019

Approximates 100% Sample - Directional Journeyed Passengers

Rank	State / Territory	1Q19	2Q19	Total Revenue		YE 4Q19	RDEW	Revs	Change	
				3Q19	4Q19		YE 4Q19	YE 4Q18	18-19	
26	Wisconsin	\$186,604	\$219,613	\$231,391	\$219,049	\$856,657	\$2,347	\$813,082	↑	5.4%
27	South Carolina	\$167,591	\$235,030	\$211,840	\$213,963	\$828,424	\$2,270	\$743,264	↑	11.5%
28	Indiana	\$179,416	\$208,137	\$196,199	\$205,084	\$788,835	\$2,161	\$730,364	↑	8.0%
29	Maryland	\$152,370	\$216,973	\$200,597	\$200,585	\$770,524	\$2,111	\$736,651	↑	4.6%
30	Alaska	\$102,548	\$165,508	\$225,690	\$128,311	\$622,057	\$1,704	\$608,276	↑	2.3%
31	Oklahoma	\$120,732	\$163,863	\$149,626	\$153,308	\$587,529	\$1,610	\$571,525	↑	2.8%
32	Alabama	\$122,913	\$148,354	\$138,874	\$147,326	\$557,467	\$1,527	\$516,446	↑	7.9%
33	Connecticut	\$104,166	\$132,750	\$122,806	\$128,354	\$488,076	\$1,337	\$468,277	↑	4.2%
34	Montana	\$98,245	\$115,293	\$164,469	\$118,384	\$496,391	\$1,360	\$468,784	↑	5.9%
35	Puerto Rico	\$121,992	\$116,913	\$100,323	\$123,265	\$462,494	\$1,267	\$346,567	↑	33.5%
36	New Mexico	\$81,470	\$117,874	\$108,282	\$116,188	\$423,815	\$1,161	\$385,330	↑	10.0%
37	Arkansas	\$86,105	\$111,349	\$104,544	\$105,652	\$407,650	\$1,117	\$386,301	↑	5.5%
38	Nebraska	\$84,809	\$112,838	\$101,018	\$102,158	\$400,823	\$1,098	\$381,518	↑	5.1%
39	Idaho	\$84,655	\$98,977	\$106,729	\$101,305	\$391,666	\$1,073	\$361,351	↑	8.4%
40	Iowa	\$82,662	\$97,706	\$95,749	\$99,849	\$375,966	\$1,030	\$351,565	↑	6.9%
41	Rhode Island	\$51,569	\$69,174	\$70,181	\$65,444	\$256,369	\$702	\$245,931	↑	4.2%
42	Maine	\$43,298	\$66,303	\$91,016	\$59,323	\$259,941	\$712	\$252,119	↑	3.1%
43	North Dakota	\$55,033	\$62,762	\$66,962	\$65,724	\$250,480	\$686	\$248,010	→	1.0%
44	South Dakota	\$36,896	\$51,656	\$56,404	\$52,133	\$197,090	\$540	\$176,227	↑	11.8%
45	Mississippi	\$43,883	\$53,486	\$50,321	\$51,263	\$198,953	\$545	\$191,378	↑	4.0%
46	Kansas	\$38,584	\$50,796	\$45,708	\$48,301	\$183,389	\$502	\$170,876	↑	7.3%
47	Wyoming	\$40,815	\$42,563	\$61,844	\$35,734	\$180,956	\$496	\$159,269	↑	13.6%
48	U.S. Virgin Islands	\$41,953	\$43,518	\$33,738	\$41,598	\$160,807	\$441	\$108,731	↑	47.9%
49	New Hampshire	\$28,312	\$36,678	\$37,007	\$35,240	\$137,236	\$376	\$142,397	↓	-3.6%
50	Vermont	\$27,006	\$32,521	\$39,080	\$34,110	\$132,716	\$364	\$128,455	↑	3.3%
51	West Virginia	\$14,720	\$18,332	\$17,892	\$17,432	\$68,377	\$187	\$65,252	↑	4.8%
52	Pacific Trust Terr.	\$12,834	\$17,566	\$15,603	\$14,393	\$60,397	\$165	\$59,101	↑	2.2%
Total of All Markets		\$16,056,052	\$19,106,717	\$17,723,592	\$18,669,534	\$71,555,895	\$196,044	\$67,830,104	↑	5.5%

source: US DOT Table DB1B

Average Fares at the Top 52 Domestic Origin and Destination States / Territories Ranked by Calendar Year 2019

Approximates 100% Sample - Directional Journeyed Passengers

Rank	Market	1Q19	2Q19	Average Fares 3Q19	4Q19	YE 4Q19	Paxs YE 4Q19	Fare YE 4Q18	Change 18-19
1	Pacific Trust Terr.	\$358	\$392	\$374	\$387	\$379	159,550	\$451	↓ -16.0%
2	Wyoming	\$272	\$308	\$285	\$300	\$284	624,740	\$300	↓ -5.3%
3	U.S. Virgin Islands	\$237	\$244	\$233	\$280	\$245	648,630	\$226	↑ 8.7%
4	Mississippi	\$231	\$241	\$237	\$232	\$236	844,910	\$251	↓ -6.0%
5	North Dakota	\$218	\$235	\$246	\$228	\$234	1,080,600	\$252	↓ -7.2%
6	South Dakota	\$210	\$229	\$235	\$224	\$226	873,680	\$234	↓ -3.3%
7	Alabama	\$218	\$222	\$218	\$219	\$222	2,539,730	\$227	↓ -2.0%
8	Arkansas	\$222	\$223	\$212	\$214	\$221	1,874,150	\$229	↓ -3.3%
9	Montana	\$220	\$213	\$225	\$235	\$218	2,222,390	\$232	↓ -6.0%
10	Kansas	\$205	\$209	\$204	\$210	\$210	885,880	\$205	↑ 2.4%
11	Vermont	\$204	\$210	\$207	\$215	\$209	634,700	\$213	→ -1.9%
12	West Virginia	\$215	\$182	\$191	\$204	\$202	348,340	\$203	→ -0.3%
13	Alaska	\$179	\$197	\$205	\$186	\$199	3,201,420	\$197	→ 1.0%
14	Maine	\$177	\$200	\$201	\$193	\$196	1,336,140	\$194	→ 0.9%
15	Iowa	\$186	\$190	\$192	\$196	\$194	1,967,080	\$193	→ 0.4%
16	Oklahoma	\$172	\$183	\$173	\$178	\$181	3,320,830	\$175	↑ 3.5%
17	Idaho	\$170	\$178	\$173	\$171	\$176	2,262,320	\$168	↑ 5.2%
18	Wisconsin	\$161	\$169	\$174	\$172	\$171	5,062,260	\$165	↑ 3.5%
19	Nebraska	\$155	\$170	\$163	\$167	\$166	2,441,910	\$159	↑ 4.2%
20	New Mexico	\$155	\$172	\$153	\$165	\$163	2,627,410	\$147	↑ 10.8%
21	South Carolina	\$170	\$157	\$145	\$168	\$159	5,219,380	\$156	→ 1.5%
22	New Hampshire	\$141	\$155	\$165	\$162	\$159	878,360	\$150	↑ 5.5%
23	Indiana	\$155	\$156	\$157	\$155	\$156	5,071,370	\$148	↑ 5.4%
24	Connecticut	\$147	\$158	\$154	\$159	\$156	3,154,720	\$153	↑ 2.0%
25	Hawaii	\$169	\$157	\$143	\$162	\$155	12,882,220	\$170	↓ -8.9%

continued on page 30

source: US DOT Table DB1B

Average Fares at the Top 52 Domestic Origin and Destination States / Territories Ranked by Calendar Year 2019

Approximates 100% Sample - Directional Journeyed Passengers

Rank	Market	Average Fares				YE 4Q19	Paxs YE 4Q19	Fare YE 4Q18	Change 18-19
		1Q19	2Q19	3Q19	4Q19				
26	Virginia	\$149	\$156	\$148	\$153	\$153	18,645,170	\$148	↑ 3.1%
27	Kentucky	\$149	\$146	\$142	\$149	\$148	6,226,500	\$146	→ 1.0%
28	Rhode Island	\$129	\$145	\$141	\$135	\$141	1,861,080	\$128	↑ 10.3%
29	North Carolina	\$149	\$148	\$134	\$136	\$140	15,585,350	\$148	↓ -5.4%
30	Ohio	\$135	\$137	\$135	\$139	\$139	9,340,160	\$137	→ 1.9%
31	Tennessee	\$139	\$141	\$132	\$133	\$137	10,846,290	\$143	↓ -3.9%
32	Utah	\$145	\$134	\$131	\$137	\$136	7,409,280	\$134	→ 1.7%
33	Michigan	\$136	\$134	\$135	\$142	\$135	11,984,380	\$145	↓ -6.8%
34	Louisiana	\$139	\$139	\$130	\$131	\$135	7,273,550	\$138	↓ -2.8%
35	Oregon	\$128	\$135	\$129	\$136	\$134	9,358,190	\$124	↑ 7.4%
36	Pennsylvania	\$129	\$133	\$128	\$131	\$131	15,540,550	\$133	→ -1.1%
37	Missouri	\$128	\$134	\$125	\$131	\$131	11,035,100	\$123	↑ 6.0%
38	Texas	\$126	\$131	\$118	\$124	\$123	48,400,130	\$122	→ 1.2%
39	Minnesota	\$131	\$124	\$111	\$118	\$121	10,798,760	\$127	↓ -5.1%
40	New York	\$113	\$121	\$116	\$127	\$120	32,279,520	\$118	→ 1.4%
41	Washington	\$114	\$119	\$113	\$119	\$117	18,107,310	\$114	↑ 2.2%
42	New Jersey	\$116	\$121	\$111	\$114	\$116	13,799,040	\$121	↓ -3.4%
43	California	\$109	\$113	\$104	\$115	\$111	82,838,270	\$107	↑ 4.0%
44	Puerto Rico	\$122	\$107	\$98	\$112	\$108	4,211,030	\$97	↑ 11.4%
45	Arizona	\$102	\$112	\$105	\$110	\$106	16,741,580	\$101	↑ 5.3%
46	Massachusetts	\$100	\$107	\$102	\$108	\$104	15,329,870	\$103	→ 1.6%
47	Georgia	\$109	\$104	\$98	\$103	\$103	19,387,980	\$101	→ 1.6%
48	Florida	\$96	\$96	\$90	\$96	\$94	66,673,230	\$94	→ 0.3%
49	Illinois	\$98	\$99	\$92	\$95	\$94	26,040,340	\$94	→ 0.3%
50	Colorado	\$101	\$91	\$88	\$93	\$93	21,701,140	\$95	↓ -2.3%
51	Maryland	\$84	\$90	\$85	\$84	\$87	8,963,370	\$83	↑ 4.4%
52	Nevada	\$86	\$83	\$78	\$82	\$81	20,763,060	\$80	→ 1.4%
Average of All Markets		\$120	\$123	\$117	\$122	\$121	593,302,950	\$119	→ 1.0%

source: US DOT Table DB1B

