



September 19th, 2022

Kyle C. Wanner, Executive Director
North Dakota Aeronautics Commission
(701) 328-9651

FOR IMMEDIATE RELEASE

August Airline Boardings Up 3% from 2021

North Dakota's eight commercial service airports posted a total of 85,167 airline passenger boardings during the month of August, 2022. This is a 3% increase from the 82,167 boardings that the state experienced in August, 2021. It is also approximately 16% below August 2019's pre-pandemic passenger counts of 101,784.

A major runway intersection reconstruction project at the Grand Forks International Airport took place between August 21st – September 2nd. No airline flights occurred at the airport during this time which led to 12 consecutive days in August with no passenger air service. This is the reason for the anomaly and significant drop in passenger counts for Grand Forks during this month's report.

"Air service demand throughout North Dakota remains healthy and our flight departures continue to show a high level of reliability with cancellation rates for the month of August below 1%," stated Kyle Wanner, Executive Director for the North Dakota Aeronautics Commission.



August Boardings Comparison of Commercial Service Airports

Prepared by: N.D. Aeronautics Commission

	AUG 2022	AUG 2021	AUG 2020	AUG 2019	AUG 2018	AUG 2017	AUG 2016	AUG 2015	AUG 2014	AUG 2013	Difference 2022/2021	% Change	Difference 2022/2019	% Change
Bismarck	20,505	19,272	10,883	25,892	24,396	24,381	22,631	21,763	19,953	18,986	1,233	6.40%	-5,387	-20.81%
Devils Lake	586	622	390	657	658	566	592	312	347	246	(36)	-5.79%	-71	-10.81%
Dickinson	2,031	1,699	881	2,242	2,115	1,628	1,523	3,433	5,731	4,246	332	19.54%	-211	-9.41%
Fargo	38,683	38,082	18,793	39,083	35,955	32,355	33,428	38,053	38,447	33,851	601	1.58%	-400	-1.02%
Grand Forks	4,220	5,836	3,179	9,717	9,493	9,114	9,322	11,020	10,566	11,913	(1,616)	-27.69%	-5,497	-56.57%
Jamestown	862	969	465	1,127	1,085	990	944	625	290	267	(107)	-11.04%	-265	-23.51%
Minot	11,466	11,144	7,594	14,497	13,310	12,527	13,258	13,665	18,104	19,656	322	2.89%	-3,031	-20.91%
Williston	6,814	4,747	1,357	8,569	6,631	6,127	6,215	8,710	10,327	8,640	2,067	43.54%	-1,755	-20.48%
TOTALS	85,167	82,371	43,542	101,784	93,643	87,688	87,913	97,581	103,765	97,805	2,796	3.39%	-16,617	-16.33%



YTD Boardings Comparison of Commercial Service Airports

Through August

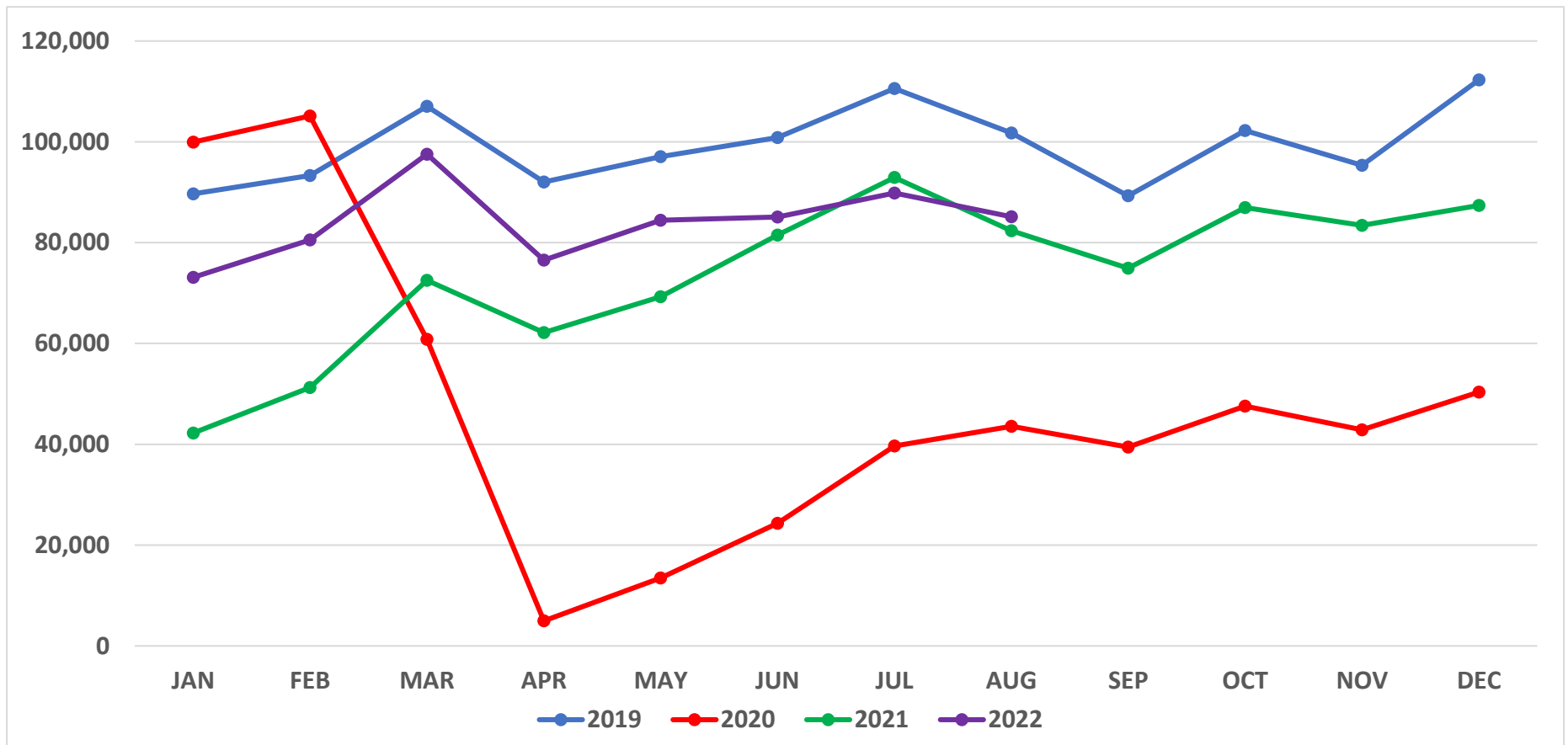
Prepared by: N.D. Aeronautics Commission

15-Sep-22

	YTD 2022	YTD 2021	YTD 2020	YTD 2019	YTD 2018	YTD 2017	YTD 2016	YTD 2015	YTD 2014	YTD 2013	Difference	% Change
Bismarck	160,733	136,945	101,699	205,860	184,183	183,708	175,262	169,066	157,205	159,590	23,788	17.37%
Devils Lake	4,564	4,123	2,607	4,541	4,429	4,693	4,290	2,929	1,227	1,745	441	10.70%
Dickinson	13,959	9,950	7,945	15,338	14,422	12,118	10,909	29,847	37,220	18,164	4,009	40.29%
Fargo	299,097	249,810	164,882	313,386	284,413	267,279	266,148	301,122	307,202	272,274	49,287	19.73%
Grand Forks	57,298	42,752	32,098	77,257	73,679	76,431	87,755	96,653	97,280	99,445	14,546	34.02%
Jamestown	7,851	6,787	3,838	7,471	8,366	8,879	7,430	5,026	1,301	1,735	1,064	15.68%
Minot	89,826	78,963	54,841	109,572	101,704	95,701	102,117	122,703	146,421	145,667	10,863	13.76%
Williston	39,026	24,787	23,933	59,007	48,283	44,972	45,337	76,115	75,673	59,658	14,239	57.45%
TOTALS	672,354	554,117	391,843	792,432	719,479	693,781	699,248	803,461	823,529	758,278	118,237	21.34%
Commercial (BIS-FAR-GFK-MOT-WIL)	645,980	533,257	377,453	765,082	692,262	668,091	676,619	765,659	783,781	736,634	112,723	21.14%
Regional (DVL-DIK-JMS)	26,374	20,860	14,390	27,350	27,217	25,690	22,629	37,802	39,748	21,644	5,514	26.43%



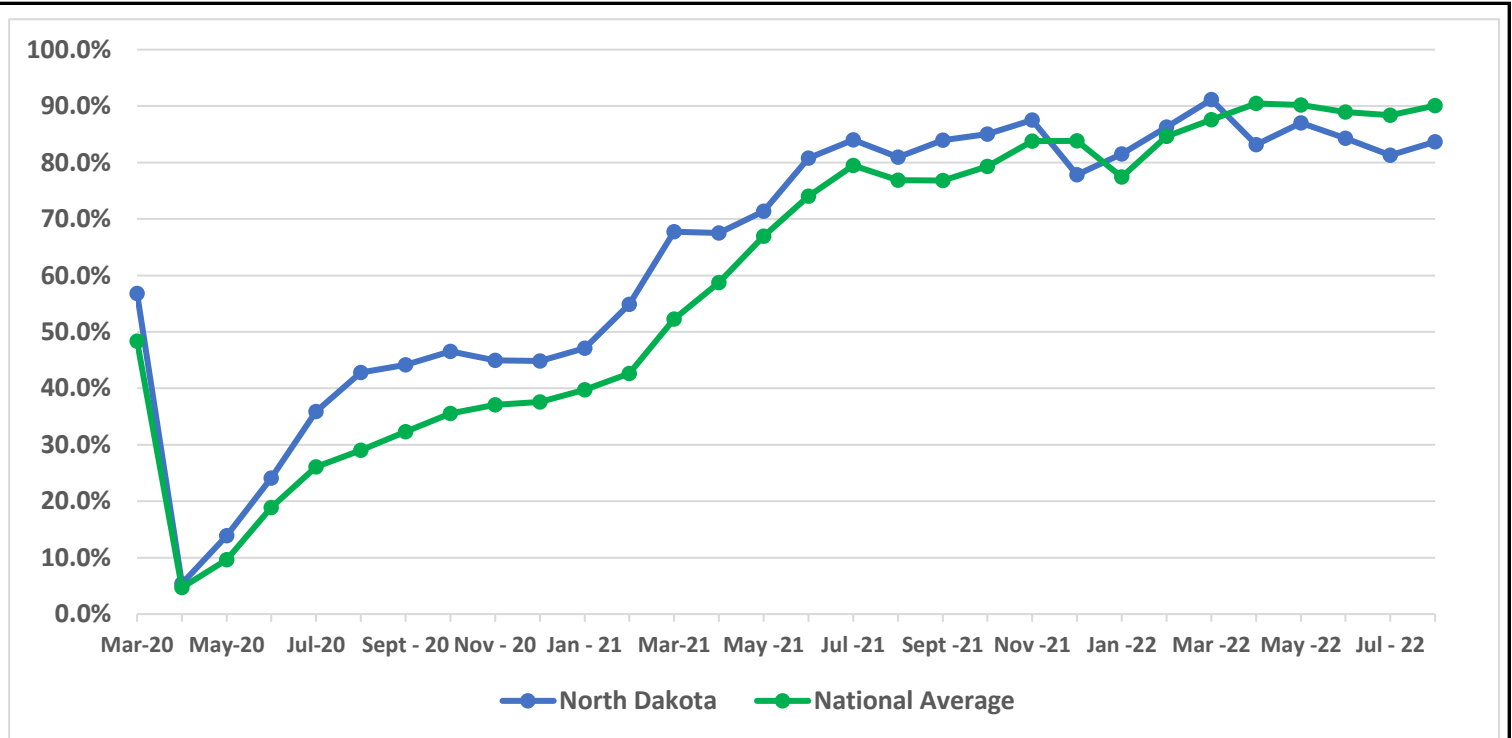
North Dakota Airline Passenger Boarding Trends (2019 - 2022)





Airline Enplanement Monthly Retention Rates North Dakota versus National Average *(Comparing each month to the same month in 2019)*

ND vs. TSA Enplanement Retention		
Month	ND	TSA
Mar-20	56.8%	48.3%
Apr-20	5.4%	4.7%
May-20	13.9%	9.6%
Jun-20	24.1%	18.9%
Jul-20	35.9%	26.1%
Aug-20	42.8%	29.0%
Sept - 20	44.2%	32.3%
Oct - 20	46.5%	35.6%
Nov - 20	45.0%	37.1%
Dec - 20	44.8%	37.6%
Jan - 21	47.1%	39.7%
Feb - 21	54.9%	42.6%
Mar-21	67.7%	52.2%
Apr - 21	67.5%	58.7%
May - 21	71.4%	67.0%
Jun - 21	80.8%	74.0%
Jul - 21	84.0%	79.5%
Aug - 21	80.9%	76.9%
Sept - 21	83.9%	76.8%
Oct - 21	85.0%	79.3%
Nov - 21	87.5%	83.8%
Dec - 21	77.8%	83.8%
Jan - 22	81.5%	77.4%
Feb - 22	86.3%	84.6%
Mar - 22	91.2%	87.6%
Apr - 22	83.2%	90.5%
May - 22	87.0%	90.2%
Jun - 22	84.3%	89.0%
Jul - 22	81.3%	88.4%
Aug - 22	83.7%	90.1%



National statistics were retrieved from TSA website: <https://www.tsa.gov/coronavirus/passenger-throughput>