



September 22nd, 2021

Kyle C. Wanner, Executive Director
North Dakota Aeronautics Commission
(701) 328-9651

FOR IMMEDIATE RELEASE

August Airline Boardings Follow Seasonal Trend

North Dakota's eight commercial service airports posted a total of 82,371 airline passenger boardings during the month of August. This month experienced lower passenger traffic than July, but is still the second highest month of airline passenger demand experienced since the beginning of the COVID-19 pandemic. Over the last three months, the statewide passenger counts have been sustained at approximately 15 - 20% below pre-pandemic levels.

"July is historically one of our busiest months out of the year for air travel and so it can be expected to see lower passenger numbers heading into the Fall as leisure travel begins to slow down," stated Kyle Wanner, Executive Director of the North Dakota Aeronautics Commission. "Our communities are doing an incredible job in maintaining a high level of air service and we hope to see passenger demand maintain at current levels and then grow, once the holiday season arrives."



August Boardings Comparison of Commercial Service Airports

Prepared by: N.D. Aeronautics Commission

	August 2021	August 2020	August 2019	August 2018	August 2017	August 2016	August 2015	August 2014	August 2013	August 2012	Difference 2021/2020	% Change	Difference 2021/2019	% Change
Bismarck	19,272	10,883	25,892	24,396	24,381	22,631	21,763	19,953	18,986	21,477	8,389	77.08%	(6,620)	-25.57%
Devils Lake	622	390	657	658	566	592	312	347	246	281	232	59.49%	(35)	-5.33%
Dickinson	1,699	881	2,242	2,115	1,628	1,523	3,433	5,731	4,246	1,979	818	92.85%	(543)	-24.22%
Fargo	38,082	18,793	39,083	35,955	32,355	33,428	38,053	38,447	33,851	30,378	19,289	102.64%	(1,001)	-2.56%
Grand Forks	5,836	3,179	9,717	9,493	9,114	9,322	11,020	10,566	11,913	10,720	2,657	83.58%	(3,881)	-39.94%
Jamestown	969	465	1,127	1,085	990	944	625	290	267	263	504	108.39%	(158)	-14.02%
Minot	11,144	7,594	14,497	13,310	12,527	13,258	13,665	18,104	19,656	20,743	3,550	46.75%	(3,353)	-23.13%
Williston	4,747	1,357	8,569	6,631	6,127	6,215	8,710	10,327	8,640	2,466	3,390	249.82%	(3,822)	-44.60%
TOTALS	82,371	43,542	101,784	93,643	87,688	87,913	97,581	103,765	97,805	88,307	38,829	89.18%	(19,413)	-19.07%



YTD Boardings Comparison of Commercial Service Airports

Through August

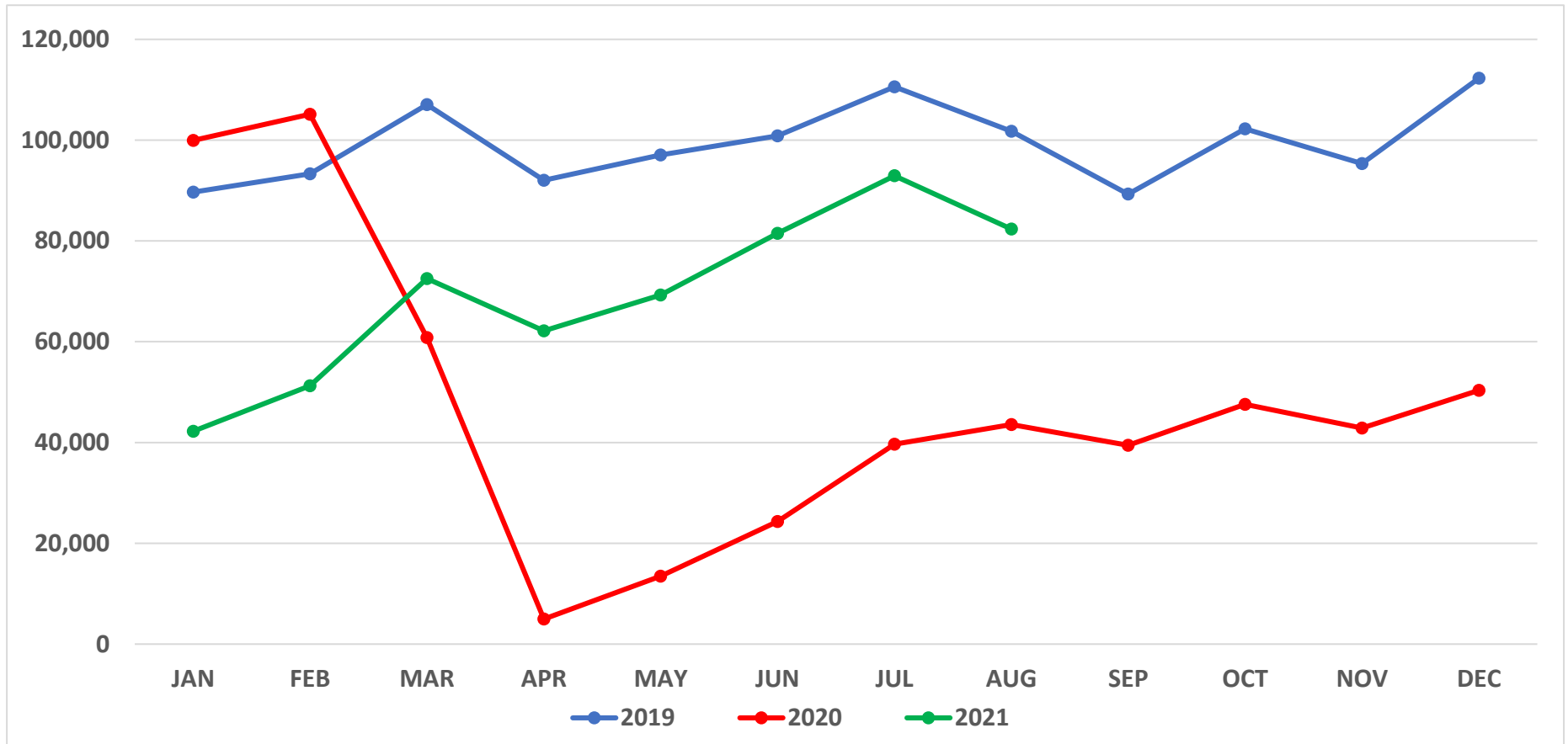
Prepared by: N.D. Aeronautics Commission

21-Sep-21

	YTD 2021	YTD 2020	YTD 2019	YTD 2018	YTD 2017	YTD 2016	YTD 2015	YTD 2014	YTD 2013	YTD 2012	Difference	% Change
Bismarck	136,945	101,699	205,860	184,183	183,708	175,262	169,066	157,205	159,590	153,587	35,246	34.66%
Devils Lake	4,123	2,607	4,541	4,429	4,693	4,290	2,929	1,227	1,745	1,913	1,516	58.15%
Dickinson	9,950	7,945	15,338	14,422	12,118	10,909	29,847	37,220	18,164	16,651	2,005	25.24%
Fargo	249,810	164,882	313,386	284,413	267,279	266,148	301,122	307,202	272,274	250,977	84,928	51.51%
Grand Forks	42,752	32,098	77,257	73,679	76,431	87,755	96,653	97,280	99,445	90,954	10,654	33.19%
Jamestown	6,787	3,838	7,471	8,366	8,879	7,430	5,026	1,301	1,735	2,878	2,949	76.84%
Minot	78,963	54,841	109,572	101,704	95,701	102,117	122,703	146,421	145,667	146,956	24,122	43.99%
Williston	24,787	23,933	59,007	48,283	44,972	45,337	76,115	75,673	59,658	21,547	854	3.57%
TOTALS	554,117	391,843	792,432	719,479	693,781	699,248	803,461	823,529	758,278	685,463	162,274	41.41%
Commercial (BIS-FAR-GFK-MOT-WIL)	533,257	377,453	765,082	692,262	668,091	676,619	765,659	783,781	736,634	664,021	155,804	41.28%
Regional (DVL-DIK-JMS)	20,860	14,390	27,350	27,217	25,690	22,629	37,802	39,748	21,644	21,442	6,470	44.96%



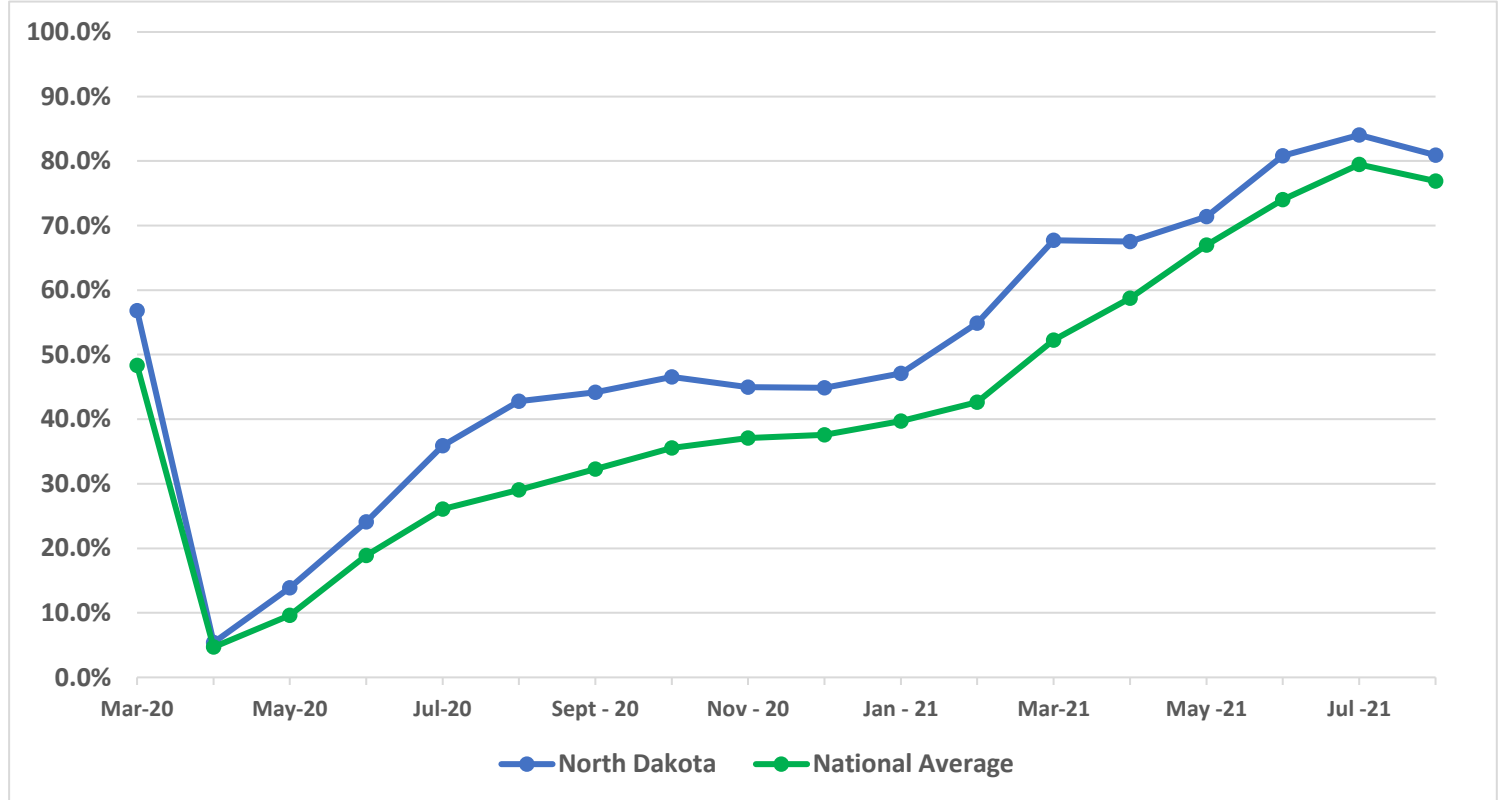
North Dakota Airline Passenger Boarding Trends (2019 - 2021)





Airline Enplanement Monthly Retention Rates North Dakota versus National Average *(Comparing each month to the same month in 2019)*

ND vs. TSA Enplanement Retention		
Month	ND	TSA
Mar-20	56.8%	48.3%
Apr-20	5.4%	4.7%
May-20	13.9%	9.6%
Jun-20	24.1%	18.9%
Jul-20	35.9%	26.1%
Aug-20	42.8%	29.0%
Sept - 20	44.2%	32.3%
Oct - 20	46.5%	35.6%
Nov - 20	45.0%	37.1%
Dec - 20	44.8%	37.6%
Jan - 21	47.1%	39.7%
Feb - 21	54.9%	42.6%
Mar-21	67.7%	52.2%
Apr - 21	67.5%	58.7%
May - 21	71.4%	67.0%
Jun - 21	80.8%	74.0%
Jul - 21	84.0%	79.5%
Aug - 21	80.9%	76.9%



National statistics were retrieved from TSA website: <https://www.tsa.gov/coronavirus/passenger-throughput>