



May 16<sup>th</sup>, 2022

Kyle C. Wanner, Executive Director  
North Dakota Aeronautics Commission  
(701) 328-9651

**FOR IMMEDIATE RELEASE**

**April Snowstorms Impact Air Travel in Central & Western North Dakota**

North Dakota’s eight commercial service airports posted a total of 76,553 airline passenger boardings during the month of April, 2022. This is a 23% increase from the 62,168 boardings that the state experienced in April, 2021. It is also approximately 17% below April 2019’s pre-pandemic passenger counts of 92,063.

The multiple heavy snowstorms that our state experienced in April provided increased challenges for our airports and passengers as North Dakota experienced a larger than normal airline cancellation rate which resulted in a lower-than-expected statewide passenger count for the month. A majority of the cancellations were experienced in central and western North Dakota in the areas most impacted by the heavy snowfall and blizzard conditions. The below chart provides an initial estimation of the airline departure statistics which show an average statewide airline departure cancellation rate for the month of April, 2022 at 9.6%. The month of April has been historically in the 1% - 3% range for a statewide cancellation rate in North Dakota.

	<b><u>BIS</u></b>	<b><u>DVL</u></b>	<b><u>DIK</u></b>	<b><u>FAR</u></b>	<b><u>GFK</u></b>	<b><u>JMS</u></b>	<b><u>MOT</u></b>	<b><u>XWA</u></b>	<b><u>TOTALS</u></b>
Departures Scheduled	318	56	52	458	136	56	190	112	<b>1,378</b>
Departures Cancelled	35	10	9	8	4	10	36	20	<b>132</b>
Cancellation Rate	11.0%	17.9%	17.3%	1.7%	2.9%	17.9%	18.9%	17.9%	<b>9.6%</b>

“April was a challenging month for our airports and passengers particularly in Central and Western North Dakota, as they experienced an increased amount of delays and cancellations due to multiple major snowstorms.” stated Kyle Wanner, Executive Director of the North Dakota Aeronautics Commission. “Our airports did an incredible job in keeping up with snow removal operations to alleviate the impacts to the traveling public as best as possible. That being said, we look forward to improved weather conditions as we move into the summer months.”



## April Boardings Comparison of Commercial Service Airports

Prepared by: N.D. Aeronautics Commission

	APR 2022	APR 2021	APR 2020	APR 2019	APR 2018	APR 2017	APR 2016	APR 2015	APR 2014	APR 2013	Difference 2022/2021	% Change	Difference 2022/2019	% Change
<b>Bismarck</b>	18,200	15,509	1,213	24,690	22,368	21,183	19,901	18,985	16,784	17,635	<b>2,691</b>	<b>17.35%</b>	<b>-6,490</b>	<b>-26.29%</b>
<b>Devils Lake</b>	538	499	14	504	419	552	397	278	0	192	<b>39</b>	<b>7.82%</b>	<b>34</b>	<b>6.75%</b>
<b>Dickinson</b>	1,492	1,282	153	1,808	1,594	1,492	1,187	3,849	4,201	1,307	<b>210</b>	<b>16.38%</b>	<b>-316</b>	<b>-17.48%</b>
<b>Fargo</b>	33,736	27,119	1,555	35,402	31,867	28,902	28,529	34,453	34,690	28,279	<b>6,617</b>	<b>24.40%</b>	<b>-1,666</b>	<b>-4.71%</b>
<b>Grand Forks</b>	7,640	5,244	379	9,346	8,138	8,507	10,764	11,623	11,973	11,652	<b>2,396</b>	<b>45.69%</b>	<b>-1,706</b>	<b>-18.25%</b>
<b>Jamestown</b>	953	767	41	694	877	869	652	456	0	162	<b>186</b>	<b>24.25%</b>	<b>259</b>	<b>37.32%</b>
<b>Minot</b>	10,149	9,115	801	12,743	12,306	11,037	11,601	15,024	17,875	16,894	<b>1,034</b>	<b>11.34%</b>	<b>-2,594</b>	<b>-20.36%</b>
<b>Williston</b>	3,845	2,633	808	6,876	5,810	5,527	5,286	10,150	9,658	7,105	<b>1,212</b>	<b>46.03%</b>	<b>-3,031</b>	<b>-44.08%</b>
<b>TOTALS</b>	<b>76,553</b>	<b>62,168</b>	<b>4,964</b>	<b>92,063</b>	<b>83,379</b>	<b>78,069</b>	<b>78,317</b>	<b>94,818</b>	<b>95,181</b>	<b>83,226</b>	<b>14,385</b>	<b>23.14%</b>	<b>-15,510</b>	<b>-16.85%</b>



# YTD Boardings Comparison of Commercial Service Airports

Through April

Prepared by: N.D. Aeronautics Commission

12-May-22

	YTD 2022	YTD 2021	YTD 2020	YTD 2019	YTD 2018	YTD 2017	YTD 2016	YTD 2015	YTD 2014	YTD 2013	Difference	% Change
Bismarck	76,021	57,564	67,487	98,495	86,155	85,447	84,927	81,713	75,722	78,831	<b>18,457</b>	<b>32.06%</b>
Devils Lake	2,143	1,580	1,541	1,899	1,948	2,329	1,965	1,263	177	786	<b>563</b>	<b>35.63%</b>
Dickinson	6,258	3,154	5,370	6,790	6,470	5,457	5,274	14,855	15,589	5,523	<b>3,104</b>	<b>98.41%</b>
Fargo	148,521	102,639	115,675	153,067	142,713	136,551	133,807	150,894	154,679	135,851	<b>45,882</b>	<b>44.70%</b>
Grand Forks	32,356	20,038	25,098	40,039	37,237	40,503	48,136	51,188	52,270	51,307	<b>12,318</b>	<b>61.47%</b>
Jamestown	3,967	2,531	2,455	3,338	3,861	4,196	3,378	2,426	135	797	<b>1,436</b>	<b>56.74%</b>
Minot	43,180	31,457	34,858	52,367	48,675	45,276	51,329	65,664	72,527	70,988	<b>11,723</b>	<b>37.27%</b>
Williston	15,337	9,187	18,370	26,141	22,231	21,324	21,784	39,692	37,000	27,259	<b>6,150</b>	<b>66.94%</b>
<b>TOTALS</b>	<b>327,783</b>	<b>228,150</b>	<b>270,854</b>	<b>382,136</b>	<b>349,290</b>	<b>341,083</b>	<b>350,600</b>	<b>407,695</b>	<b>408,099</b>	<b>371,342</b>	<b>99,633</b>	<b>43.67%</b>
Commercial (BIS-FAR-GFK-MOT-WIL)	315,415	220,885	261,488	370,109	337,011	329,101	339,983	389,151	392,198	364,236	<b>94,530</b>	<b>42.80%</b>
Regional (DVL-DIK-JMS)	12,368	7,265	9,366	12,027	12,279	11,982	10,617	18,544	15,901	7,106	<b>5,103</b>	<b>70.24%</b>

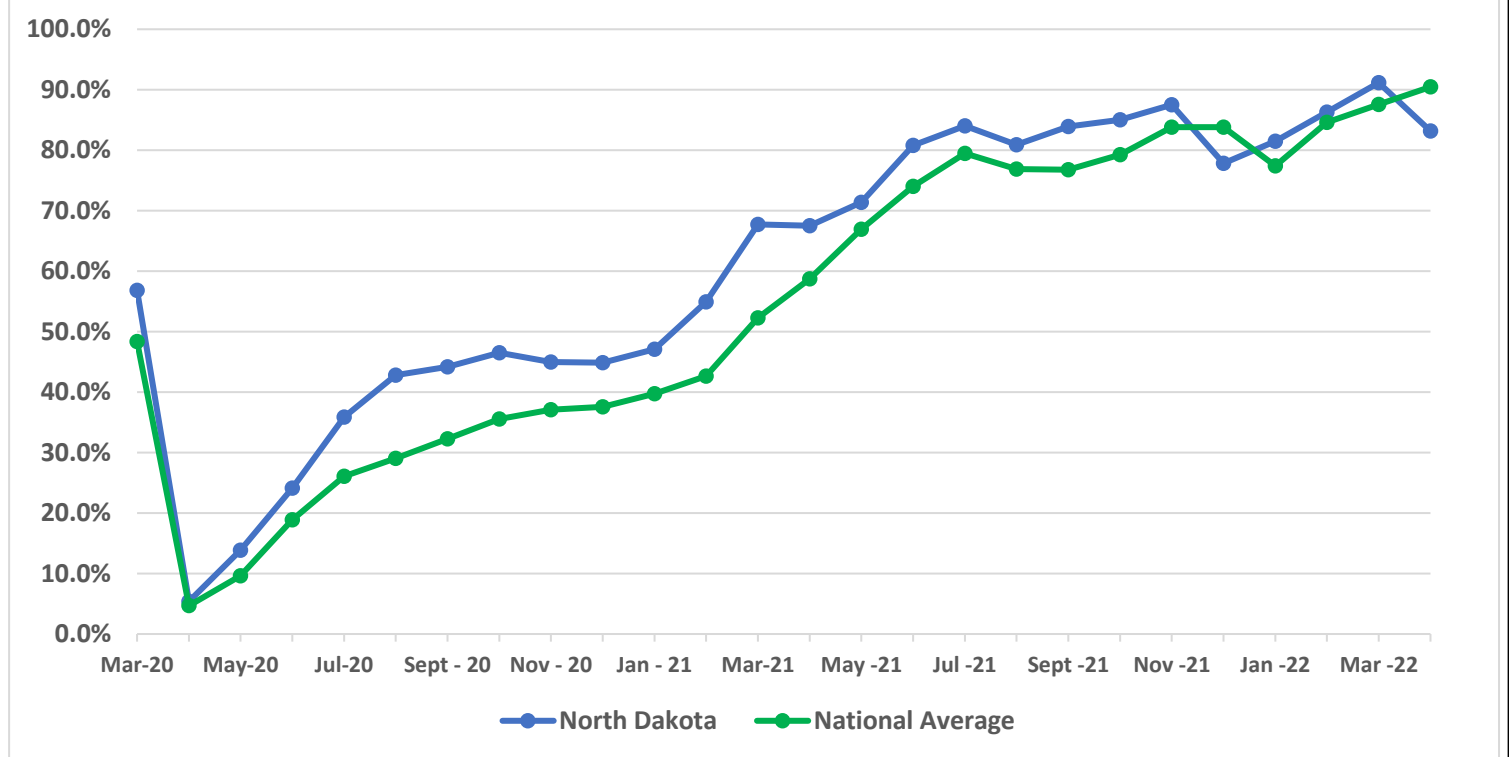




## Airline Enplanement Monthly Retention Rates North Dakota versus National Average *(Comparing each month to the same month in 2019)*

ND vs. TSA Enplanement Retention

Month	ND	TSA
Mar-20	56.8%	48.3%
Apr-20	5.4%	4.7%
May-20	13.9%	9.6%
Jun-20	24.1%	18.9%
Jul-20	35.9%	26.1%
Aug-20	42.8%	29.0%
Sept - 20	44.2%	32.3%
Oct - 20	46.5%	35.6%
Nov - 20	45.0%	37.1%
Dec - 20	44.8%	37.6%
Jan - 21	47.1%	39.7%
Feb - 21	54.9%	42.6%
Mar-21	67.7%	52.2%
Apr - 21	67.5%	58.7%
May - 21	71.4%	67.0%
Jun - 21	80.8%	74.0%
Jul - 21	84.0%	79.5%
Aug - 21	80.9%	76.9%
Sept - 21	83.9%	76.8%
Oct - 21	85.0%	79.3%
Nov - 21	87.5%	83.8%
Dec - 21	77.8%	83.8%
Jan - 22	81.5%	77.4%
Feb - 22	86.3%	84.6%
Mar - 22	91.2%	87.6%
Apr - 22	83.2%	90.5%



National statistics were retrieved from TSA website: <https://www.tsa.gov/coronavirus/passenger-throughput>