

NORTH Dakota

AIRPORT DIRECTORY

2021-2022



Photo courtesy of Tanner Overland



North Dakota Aeronautics Commission

PO Box 5020 • Bismarck, ND 58502

701.328.9650

ndaero@nd.gov

www.aero.nd.gov





Commercial Airport (C) (Primary and Non-Primary)
 General Aviation Airport (G)
 Major City
 County Boundary

NDSASP System Airports

PUBLIC AIRPORTS IN NORTH DAKOTA



Greetings and welcome to the skies of North Dakota!

This directory contains aeronautical information for each of our state's 89 public-use airports. Due to information changing over time, this directory is meant to be used as an aid; but not as the sole use of information when flight planning. We encourage pilots to refer to the current FAA Airman's Information Manual, the FAA's Airport/Facility Directory, and up-to-date airport NOTAMS prior to each flight. It is also recommended to contact the airport operator to determine the current airport conditions and to confirm available services.

I also want to encourage you to visit our website at aero.nd.gov to view upcoming aviation related events and fly-ins throughout the state and to view additional information related to our aviation system. Our office works hard to ensure that this website is a one-stop shop for all of your North Dakota aviation needs. I also hope that you consider creating long lasting memories of your own by requesting one of our "Fly ND" passport books to enable you to participate in the collection of airport stamps as you journey around our state.

The North Dakota Aeronautics Commission offers best wishes to you for a safe and enjoyable flying experience as you take in everything that our great state has to offer.

Wishing you smooth flying,

Kyle C. Wanner

Kyle C. Wanner
Executive Director

COPIES OF THIS DIRECTORY ARE AVAILABLE BY WRITING OR CALLING:



North Dakota Aeronautics Commission

P.O. Box 8

Bismarck, North Dakota 58103

TEL: (701) 325-6600

FAX: (701) 325-6600

E-mail: ndaero@nd.gov

Visit our website: <http://aero.nd.gov>



AMENITIES LISTED FOR EACH AIRPORT



Fuel WX Directory Lounge Maintenance Hanger Courtesy Car WiFi Customs

Directory Disclaimer

Aeronautical information on this airport directory is up to date through Fall of 2020, and is obtained from the Federal Aviation Administration Chart Supplement and the North Dakota Aeronautics Commission. Printer, publisher, and the North Dakota Aeronautics Commission make no warranty, express or implied, as to accuracy of information expressly disclaim liability for the accuracy thereof. We recommend that you check Airman's Information Manual, Chart Supplement, NOTAMS, and the Safety Bulletins from the Federal Aviation Administration for supplemental data and current information.

FLY North Dakota AIRPORTS!

North Dakota's passport program rewards pilots who fly to North Dakota's publically-owned airports, attend FAA safety seminars, and visit North Dakota's aviation museums. Fly North Dakota airports promotes safety and education, and encourages pilots to practice approaches and landings in many different environments. It's also a great way to support general aviation airports, businesses, and tourism. Just visit one of the places or events listed in our passports, and have your passport stamped in the appropriate box. It's as easy as that!



HOW TO PARTICIPATE.

Get a Fly North Dakota Airports Passport at your local publically-owned airport or by contacting the North Dakota Aeronautics Commission.

Fill in the page at the front of your passport with your name and contact information. Each time you visit a North Dakota publically-owned airport, aviation museum, or participating FAA safety seminar, have your passport stamped in the appropriate box. The location of the airport stamp is stated in the passport.



When you have earned the proper number of stamps, submit your passport (they will be returned) to the North Dakota Aeronautics Commission, P.O. Box 5020, Bismarck, ND 58502. Phone: (701) 328-9650. Email: ndaero@nd.gov



Visit a community event or attraction by searching NDtourism.com or call 1-800-HELLO-ND on your legacy flight! Each airport box in the Passport has an attraction listed.



North Dakota Airport Association



ATTENDANCE: UNATTENDED
FUEL: NONE REPAIRS: NONE

LIGHTS: NONE
SNOW REMOVAL: CLOSED WINTER MOS.

CTAF: 122.9 **WX: 124.5** **FARGO**
ATIS



FIELD ELEVATION	REMARKS	IN-PERSON CONTACT
973	Road south of runway 35 irregular mowing	Rick Burgum PHONE: 701-967-8312 Addl: 701-967-8364 PUBLIC TERMINAL PHONE: None



ASHLEY ASY

ASHLEY MUNICIPAL

ATTENDANCE: UNATTENDED

FUEL: 100LL

REPAIRS: MAJOR

Pilot Controlled Lights: CTAF

SNOW REMOVAL: Call After Storm

CTAF: 122.9

WX: 118.175 LINTON



FIELD ELEVATION

REMARKS

IN-PERSON CONTACT

2032

Call ahead for fuel

Ladelle George
PHONE: 701-371-8707
Addl: 701-288-3194
PUBLIC TERMINAL PHONE: Yes



BEACH 20U BEACH AIRPORT

ATTENDANCE: UNATTENDED/ON CALL
FUEL: 100LL, JET A-Self Serve
Credit Card REPAIRS: NONE

Pilot Controlled Lights: CTAF
SNOW REMOVAL: Confirm after storm
Instrument Approach: Non-Precision

CTAF: 122.8 WX: 118.175



FIELD ELEVATION	REMARKS	IN-PERSON CONTACT
2756	AWOS Phone: 701-872-9225	Karl Davis PHONE: 256-496-1978 PUBLIC TERMINAL PHONE: Yes



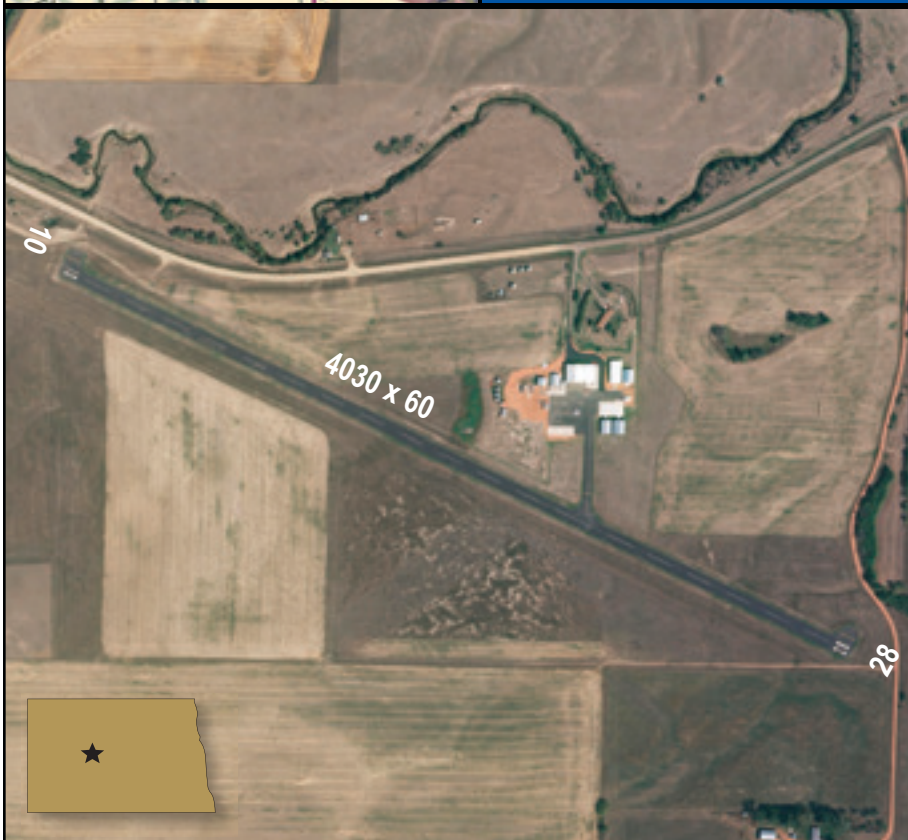
BEULAH 95D

BEULAH MUNICIPAL

ATTENDANCE: UNATTENDED / ON CALL
FUEL: CALL AHEAD - 100LL JETA
REPAIRS: MAJOR

Pilot Controlled Lights: CTAF
SNOW REMOVAL: Confirm after storm

CTAF: 122.9 WX: 118.675 HAZEN



FIELD ELEVATION

REMARKS

IN-PERSON CONTACT

1791

Unlighted Stacks 600' Agl-6 miles N.
Lighted Stack 498' Agl-1.8 nm south.
Code for terminal: 1229.
Courtesy car inside shop.
Call: 701-873-4100 for fuel

Shawn Morten
PHONE: 701-873-4100
Addl: 701-873-2259
PUBLIC TERMINAL PHONE: Yes



BISMARCK BIS

BISMARCK MUNICIPAL

ATTENDANCE: 24 HOUR SERVICE
FUEL: FULL SERVICE 100LL JET A
REPAIRS: MAJOR

LIGHTS: CTAF when tower closed
SNOW REMOVAL: Regular Service
INSTRUMENT APPROACH: Precision

GROUND: 121.9 UNICOM: 122.95
TOWER/CTAF: 118.3 WX: 119.35 ATIS



FIELD ELEVATION

REMARKS

IN-PERSON CONTACT

1661

AWOS Phone: 701-255-7563.

Greg Haug/Tim Thorsen
PHONE: 701-355-1808
PUBLIC TERMINAL PHONE: Yes



BOTTINEAU D09

BOTTINEAU MUNICIPAL

ATTENDANCE: ON CALL

FUEL: 100LL-Call Ahead REPAIRS: NONE

Pilot Controlled Lights: CTAF

SNOW REMOVAL: Confirm after storm

Instrument Approach: Non-Precision

CTAF: 122.8

WX: 118.125 ROLLA



FIELD ELEVATION

REMARKS

IN-PERSON CONTACT

1680

3/21 Closed Winter Months

Leo Jostad / Chuck Refling

PHONE: 701-871-2096

Addl: 701-228-2236

PUBLIC TERMINAL PHONE: Yes

		<div><div>BOWBELLS 5B4 BOWBELLS MUNICIPAL</div><div>ATTENDANCE: UNATTENDED FUEL: NONE REPAIRS: NONE</div><div>LIGHTS: NONE SNOW REMOVAL: Call after storm</div><div>CTAF: 122.9 WX: 118.575 TIOGA</div></div>	
FIELD ELEVATION		REMARKS	IN-PERSON CONTACT
1955		Standing water after rain. Confirm runway condition prior to use. Additional: 701-377-2608	Wayne Jacobson PHONE: 701-377-2731 701-339-1574



MX hanger can be used for storage with prior notifications



BOWMAN BWW

BOWMAN REGIONAL

ATTENDANCE: M-F 8 AM - 5 PM

FUEL: 100LL JETA - Self Service Credit Card

REPAIRS: MAJOR

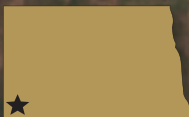
Pilot Controlled Lights: CTAF

SNOW REMOVAL: Confirm after storm

Instrument Approach: Non-Precision

CTAF: 122.8

WX: 118.075



FIELD ELEVATION




REMARKS

IN-PERSON CONTACT

2965

AWOS: 701-523-3412
Check Power River 3 MOA status on
www.sua.faa.gov
Email: fuel@bottomlineaviation.com

Brent Kline
PHONE: 701-523-7484
701-440-7449
PUBLIC TERMINAL PHONE: YES

<div><div></div><div></div><div></div></div>		<div><div>CANDO</div><div>9D7</div><div>CANDO MUNICIPAL</div></div>		
		ATTENDANCE: UNATTENDED		
		FUEL: NONE REPAIRS: NONE		
		Pilot Controlled Lights: CTAF		
		SNOW REMOVAL: Confirm after storm		
		Instrument Approach: non-precision		
		CTAF: 122.9		WX: 118.325
				
FIELD ELEVATION		REMARKS		IN-PERSON CONTACT
1482		AWOS: 701-968-3625. Contact airport manager for vehicle access.		Rollie Bjornstad PHONE: 701-739-8026 701-968-3043 PUBLIC TERMINAL PHONE: NONE



CARRINGTON 46D

CARRINGTON MUNICIPAL

ATTENDANCE: UNATTENDED

FUEL: 100LL - 24 Hr. Self-serve credit card

REPAIRS: NONE

Pilot Controlled Lights: CTAF

SNOW REMOVAL: Confirm after storm

Instrument Approach: non-precision

CTAF: 122.9

WX: 118.575



FIELD ELEVATION

1607

REMARKS

AWOS: 701-652-1875
Confirm snow removal: 701-652-5206

IN-PERSON CONTACT

Jason Wolsky
PHONE: 701-652-2911
701-652-5206
PUBLIC TERMINAL PHONE: Yes



CASSELTON 5N8

ROBERT MILLER REGIONAL

ATTENDANCE: MON-FRI 8AM-5PM
FUEL: 100LL Self service credit card
REPAIRS: MAJOR

Pilot Controlled Lights: CTAF
SNOW REMOVAL: Confirm after storm
Instrument Approach: Non-Precision

CTAF: 122.8

WX: 124.5

FARGO



FIELD ELEVATION

REMARKS

IN-PERSON CONTACT

933

Confirm winter conditions:
701-347-4680.
www.Casselton.com/community/airport

Robert Miller
PHONE: 701-347-0201
ADDL. PHONE: 701-347-5519
PUBLIC TERMINAL PHONE: Yes



CAVALIER 2C8

CAVALIER MUNICIPAL

ATTENDANCE: ON CALL

FUEL: 100LL, JETA Self Service

Credit Card

REPAIRS: MAJOR

Pilot Controlled Lights: CTAF

SNOW REMOVAL: Confirm after storm

Instrument Approach: Non-Precision

CTAF: 122.8

WX: 118.275



FIELD ELEVATION

REMARKS

IN-PERSON CONTACT

892

AWOS: 701-265-8050.
Ry 34 - 31' powerline 1300'
from threshold.
Elevator SE of centerline.

Harold McConnell
PHONE: 701-520-8631
ADDL. PHONE: 701-520-5066
PUBLIC TERMINAL PHONE: Yes



COLUMBUS D49

COLUMBUS MUNICIPAL

ATTENDANCE: UNATTENDED

FUEL: NONE

REPAIRS: NONE

LIGHTS: Reflectors

SNOW REMOVAL: Confirm after storm

CTAF: 122.9

WX: 118.025

CROSBY



FIELD ELEVATION

REMARKS

IN-PERSON CONTACT

1931

Call for grass mowing.

Rich Castell - Manager
PHONE: 701-216-0030
ADDL. PHONE: 701-939-7831
PUBLIC TERMINAL PHONE: No



COOPERSTOWN S32

COOPERSTOWN MUNICIPAL

ATTENDANCE: On Call

FUEL: 100LL - Self-service credit card

REPAIRS: NONE

Pilot Controlled Lights: CTAF

SNOW REMOVAL: Confirm after storm

Instrument Approach: non-Precision

CTAF: 122.9

WX: 118.75



FIELD ELEVATION

REMARKS

IN-PERSON CONTACT

1424

Fuel-self service credit card.
AWOS: 701-797-2566
May-Sept. M-F 8am-5pm
Oct.-April On Call

John Wakefield
PHONE: 701-789-0666
ADDL. PHONE: 701-789-0667
PUBLIC TERMINAL PHONE: Yes



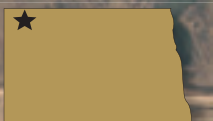
CROSBY D50

CROSBY MUNICIPAL

ATTENDANCE: UNATTENDED
FUEL: 100LL - Self Service Credit Card
REPAIRS: NONE

Pilot Controlled Lights: CTAF
SNOW REMOVAL: Confirm after storm
Instrument Approach: Non-Precision

CTAF: 122.9 WX: 118.025



FIELD ELEVATION

REMARKS

IN-PERSON CONTACT

1950

Runway 3-21 closed winter mos.
AWOS: 701-965-6732
Traffic Pattern: 2750.

Mike Melby -Chairman
PHONE: 701-570-0944
ADDL. PHONE: 701-965-6512
PUBLIC TERMINAL PHONE: Yes

FIELD ELEVATION	REMARKS	IN-PERSON CONTACT
1470	M-F 8am - 5pm AWOS: 701-662-7214 Foss and Meier: 701-662-3221 Devils Lake Aero: 701-662-4416	Bethany Hart PHONE: 701-662-5833 PUBLIC TERMINAL PHONE: Yes



DICKINSON DIK

DICKINSON THEODORE ROOSEVELT REGIONAL

ATTENDANCE: M-F 8-5PM MST
FUEL: 100LL, JET A - Self-serve after 2200
REPAIRS: MAJOR

Pilot Controlled Lights: CTAF
SNOW REMOVAL: Regular
Instrument Approach: Precision

CTAF: 123.00 WX: 118.375



FIELD ELEVATION	REMARKS	IN-PERSON CONTACT
2592	On Call After Hrs: 701-264-9466 AWOS: 701-227-0280	Kelly Braun PHONE: 701-483-1062 ADDL. PHONE: 701-483-4221 PUBLIC TERMINAL PHONE: Yes

DRAYTON MUNICIPAL


REPAIRS: NONE

SNOW REMOVAL: Confirm after storm

HALLOCK

IN-PERSON CONTACT

Rob Boll
PHONE: 701-454-3317
ADDL PHONE: 701-454-3590
PUBLIC TERMINAL PHONE: None

	<div>DUNSEITH</div> <div>S28</div> <div>INTERNATIONAL PEACE GARDEN</div>		
	<div>ATTENDANCE: UNATTENDED</div> <div>FUEL: NONE</div> <div>REPAIRS: NONE</div>		
	<div>SNOW REMOVAL: REGULAR</div>		
	<div>CTAF: 122.8</div> <div>WX: 118.125</div> <div>ROLLA</div>		
			
FIELD ELEVATION	REMARKS	IN-PERSON CONTACT	
2316	Unattended US Customs: 701-263-4513 Canadian Customs: 204-534-6820	Kyle Wanner PHONE 701-328-9650 ADDL. PHONE: 701-425-5926 PUBLIC TERMINAL PHONE: None	



EDGELEY 51D

EDGELEY MUNICIPAL

ATTENDANCE: UNATTENDED

FUEL: 100LL & JET A - Self Service

Credit Card

REPAIRS: NONE

Pilot Controlled Lights: CTAF

Instrument Approach: non-precision

CTAF: 122.8

WX: 118.675

OAKES



FIELD ELEVATION

REMARKS

IN-PERSON CONTACT

1604

Confirm snow removal
Heated Hanger available for
transient aircraft.

Dave Lux
PHONE: 701-320-8740
ADDL PHONE: 701-709-0114
PUBLIC TERMINAL PHONE: Yes

Transportation can be arranged.
Call prior to arrival.

ELGIN
Y71
ELGIN MUNICIPAL

ATTENDANCE: UNATTENDED
FUEL: NONE REPAIRS: NONE

LIGHTS: NONE
SNOW REMOVAL: On request only

CTAF: 122.9 WX: 118.75 GLEN ULLIN



FIELD ELEVATION

REMARKS

IN-PERSON CONTACT

2355

Snow removal on request only.
Runway surface rough.
Runway 30 - 10' dropoff 100' from
threshold. No line of sight between
runway ends.

PHONE: 701-220-3442
701-584-9012
PUBLIC TERMINAL PHONE: None

<div><div></div><div><div><div><div>ELLENDALE 4E7</div><div>ELLENDALE MUNICIPAL</div></div><div><div>ATTENDANCE: UNATTENDED</div><div>FUEL: NONE REPAIRS: NONE</div></div><div><div>Pilot Controlled Lights: CTAF</div><div>SNOW REMOVAL: Confirm after storm</div><div>Instrument Approach: Non-Precision</div></div><div><div>CTAF: 122.9</div><div>WX: 118.675</div><div>OAKES</div></div></div></div></div>		
<div><div><div>NORTH DAK</div><div>SOUTH DAK</div></div></div>		
<div><div><div>31</div><div>35</div><div>31</div></div></div>		
FIELD ELEVATION	REMARKS	IN-PERSON CONTACT
1457	Ry 17/35 closed winter months, Power lines N. of Airport.	Kyle Glynn PHONE: 701-830-0143 City of Ellendale: 701-349-3252 PUBLIC TERMINAL PHONE: Yes



ENDERLIN 5N4 SKY HAVEN

ATTENDANCE: UNATTENDED
FUEL: 100LL Self Service Credit Card
REPAIRS: NONE

Pilot Controlled Lights: CTAF
SNOW REMOVAL: Confirm after storm

CTAF: 122.9 WX: 118.325 GWINNER



FIELD ELEVATION

REMARKS

IN-PERSON CONTACT

1151

Traffic Pattern: 1800
Electric hookups available for
winter ops

Bobby Geske
PHONE 701-799-6082
ADDL PHONE: 701-437-3437
PUBLIC TERMINAL PHONE: Yes



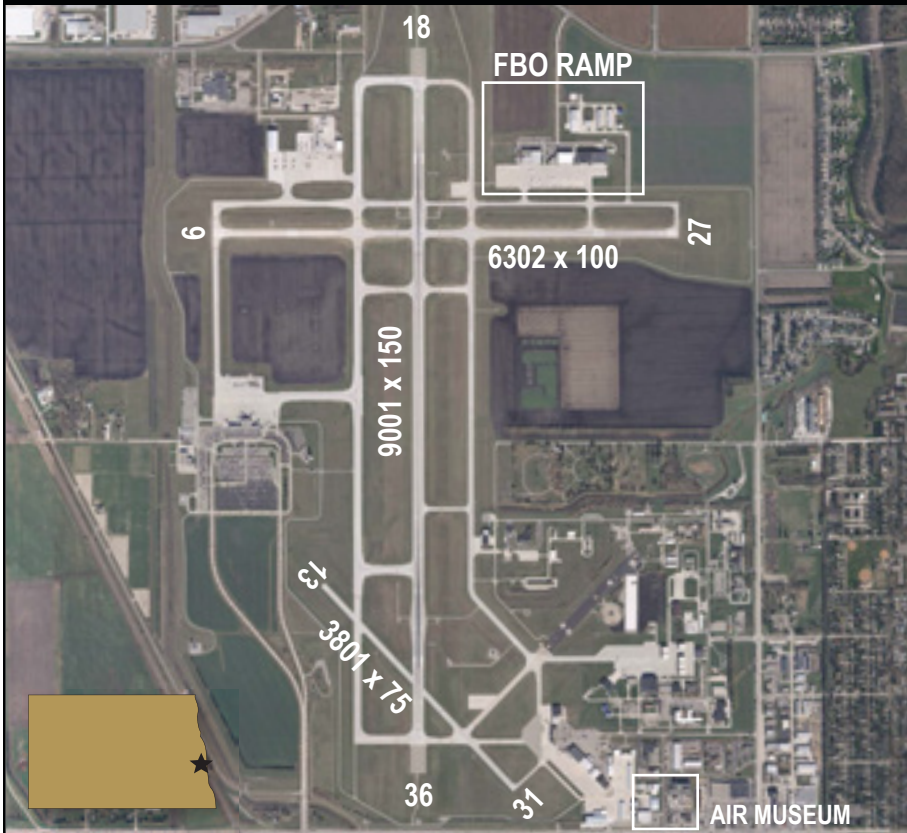
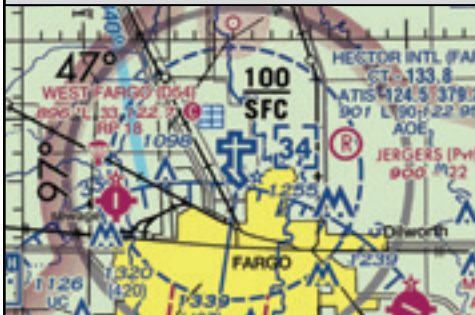
FARGO FAR

HECTOR INTERNATIONAL

ATTENDANCE: ATTENDED ALL HOURS
FUEL: JET A, 100LL, J8 FULL SERVICE
REPAIRS: MAJOR

LIGHTS: Tower Controlled
SNOW REMOVAL: Regularly Scheduled
Pilot Controlled Lights: CTAF

TWR: 133.8 GRND: 121.9 ATIS - 124.5



FIELD ELEVATION

REMARKS

IN-PERSON CONTACT

901

AWOS 701-298-3877
Traffic Pattern: 1800 MSL
US Customs port of entry,
Fargo Air Museum SE corner
of airport.

Shawn Dobberstein
PHONE: 701-241-1501
PUBLIC TERMINAL PHONE: Yes



FESSENDEN D24

FESSENDEN-STREIBEL MUNICIPAL

ATTENDANCE: UNATTENDED

FUEL: NONE

REPAIRS: NONE

Pilot Controlled Lights: CTAF

SNOW REMOVAL: NONE

CTAF: 122.9

WX: 118.825 HARVEY



FIELD ELEVATION

REMARKS

IN-PERSON CONTACT

1619

Daylight cone markers.
Road east of airport

Mark Nelson
PHONE 701-653-5069
PUBLIC TERMINAL PHONE: None

<div></div>		<div><div>FORT YATES Y27 STANDING ROCK</div><div>ATTENDANCE: UNATTENDED FUEL: NONE REPAIRS: NONE</div><div>Pilot Controlled Lights: CTAF SNOW REMOVAL: Confirm after storm</div><div>CTAF: 122.9 WX: 118.175 LINTON</div></div>	
<div><div></div><div></div></div>			
FIELD ELEVATION		REMARKS	IN-PERSON CONTACT
1633			PHONE: 701-854-8611 ADDL PHONE: 701-854-8500 ext 7002 PUBLIC TERMINAL PHONE: None

		<div><div>GACKLE 9G9</div><div>GACKLE MUNICIPAL</div></div>	
		ATTENDANCE: UNATTENDED	
		FUEL: NONE REPAIRS: NONE	
		LIGHTS: NONE	
		SNOW REMOVAL: NONE - call prior	
		CTAF: 122.9 WX: 118.425 JAMESTOWN	
FIELD ELEVATION	REMARKS	IN-PERSON CONTACT	
1904	Check notams.	Public works PHONE 701-320-3655 ADDL PHONE: 701-485-3331 PUBLIC TERMINAL PHONE: None	



GARRISON D05

GARRISON MUNICIPAL

ATTENDANCE: UNATTENDED

FUEL: 100LL - Self Service Credit Card

REPAIRS: NONE

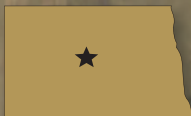
Pilot Controlled Lights: CTAF

SNOW REMOVAL: Confirm after storm

Instrument Approach: Non-Precision

CTAF: 122.9

WX: 118.675 HAZEN



FIELD ELEVATION

REMARKS

IN-PERSON CONTACT

1936

RY 3/21 closed in winter.

Jim Wilcox- Chairman
PHONE: 701-301-1055
ADDL PHONE: 701-463-2600 City
PUBLIC TERMINAL PHONE: Yes



GLEN ULLIN D57

GLEN ULLIN REGIONAL

ATTENDANCE: UNATTENDED

FUEL: 100LL - Self-service credit card

REPAIRS: NONE

Pilot Controlled Lights: CTAF

SNOW REMOVAL: Confirm after storm

Instrument Approach: non-Precision

CTAF: 122.9

WX: 118.75



FIELD ELEVATION

REMARKS

IN-PERSON CONTACT

2091

AWOS: 701-348-9581
Hangar space available, call ahead.

Gene Glasser
PHONE 701-226-1147
ADDL PHONE: 701-226-7994
PUBLIC TERMINAL PHONE: Yes



GRAFTON GAF

GRAFTON HUTSON FIELD

ATTENDANCE: M-F 8am - 5pm

FUEL: JET A, 100LL Self Service

Credit Card

REPAIRS: MINOR

Pilot Controlled Lights: CTAF

SNOW REMOVAL: Confirm after storm

Instrument Approach: Non-Precision

CTAF: 122.8

WX: 118.625



FIELD ELEVATION

REMARKS

IN-PERSON CONTACT

824

AWOS: 701-352-0581
Runway 8/26 soft when wet
Heavy aerial spray activity
Rwy 8/26 closed winter months

Andrew Tibert
PHONE: 701-352-0271
ADDL PHONE: 701-520-9174
PUBLIC TERMINAL PHONE: Yes



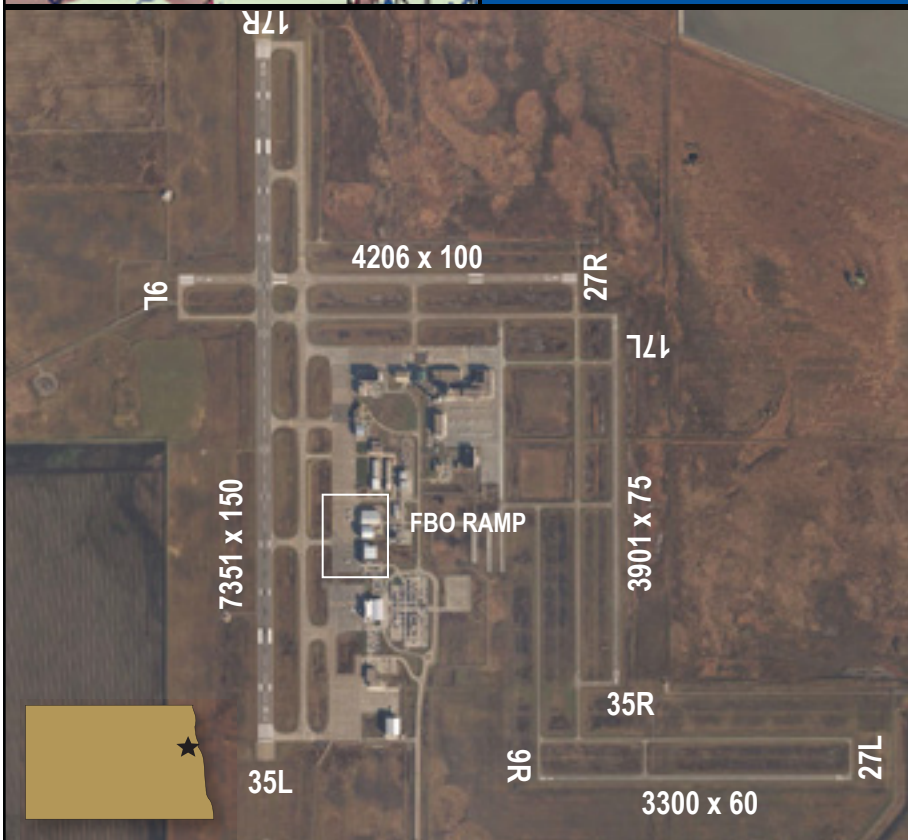
GRAND FORKS GFK

GRAND FORKS INTERNATIONAL

ATTENDANCE: ALL HOURS
FUEL: 100LL, JET A Full Service
REPAIRS: MAJOR

Pilot Controlled Lights: CTAF when tower closed
SNOW REMOVAL: Regular
Instrument Approach: Precision

Tower: 118.4 Ground: 124.575
ATIS: 119.4 UNICOM: 122.95



FIELD ELEVATION	REMARKS	IN-PERSON CONTACT
844	AWOS: 701-722-3486 US Customs: 701-772-3301 TFR West of Airport Heavy Student Traffic	Ryan Riesinger PHONE: 701-795-6981 FBO PHONE: 701-772-5504 PUBLIC TERMINAL PHONE: Yes



GWINNER GWR

GWINNER-ROGER MELROE FIELD

ATTENDANCE: UNATTENDED
FUEL: 100LL, JET A Self Service
Credit Card REPAIRS: NONE

Pilot Controlled Lights: CTAF
SNOW REMOVAL: Confirm after storm
Instrument Approach: non-Precision

CTAF: 122.7 WX: 118.325



FIELD ELEVATION

REMARKS

IN-PERSON CONTACT

1266

AWOS: 701-678-6801
Ry 6/24 closed winter months
Additional contact number:
701-308-0169

Rick Hoistad
PHONE: 701-680-8000
ADDL PHONE: 701-678-2639
PUBLIC TERMINAL PHONE: Yes



HARVEY 5H4

HARVEY MUNICIPAL

ATTENDANCE: UNATTENDED

FUEL: 100LL - Self Service Credit Card

REPAIRS: NONE

Pilot Controlled Lights: CTAF

SNOW REMOVAL: Regular- confirm

Instrument Approach: non-precision

CTAF: 122.8

WX: 118.825



FIELD ELEVATION

REMARKS

IN-PERSON CONTACT

1607

AWOS: 701-324-2058

Shari Nyhus - Chairperson
PHONE: 701-324-2000
ADDL PHONE: 701-324-4137
PUBLIC TERMINAL PHONE: None

HAZELTON MUNICIPAL

REPAIRS: NONE

SNOW REMOVAL: None

WX: 118.175 **LINTON**



FIELD ELEVATION	REMARKS	IN-PERSON CONTACT
2015	Turf clumpy. Tiedowns at west apron	Mike Appert PHONE: 701-782-6269 PHONE: 701-220-6816 PUBLIC TERMINAL PHONE: None



HAZEN HZE

MERCER COUNTY REGIONAL

ATTENDANCE: UNATTENDED
FUEL: 100LL JETA - Self Service Credit Card
REPAIRS: MINOR

Pilot Controlled Lights: CTAF
SNOW REMOVAL: Confirm after storm
Instrument Approach: non-Precision

CTAF: 122.8 WX: 118.675



FIELD ELEVATION

REMARKS

IN-PERSON CONTACT

1814

AWOS: 701-748-2443.
 Fuel- self-service credit card.
 Call ahead for hangar

Steve Frovarp
 PHONE 701-880-0042
 ADDL PHONE: 701-748-2550
 PUBLIC TERMINAL PHONE: Yes



HETTINGER HEI

JB LINDQUIST REGIONAL

ATTENDANCE: M-F 8am - 5pm

FUEL: 100ll, JET A - Self Service Credit Card

REPAIRS: MAJOR

Pilot Controlled Lights: CTAF

SNOW REMOVAL: Confirm after storm

Instrument Approach: non-Precision

CTAF: 122.8

WX: 119.925



FIELD ELEVATION

REMARKS

IN-PERSON CONTACT

2705

AWOS: 701-567-4594.

J.B. Lindquist
PHONE: 701-567-2069
ADDL PHONE: 701-567-4469
PUBLIC TERMINAL PHONE: No



HILLSBORO 3H4

HILLSBORO REGIONAL

ATTENDANCE: MON-FRI 8am-5pm

FUEL: 100LL - Self Service Credit Card

REPAIRS: MAJOR

Pilot Controlled Lights: CTAF

SNOW REMOVAL: Confirm after storm

Instrument Approach: Non-Precision

CTAF: 122.9

WX: 124.5

GFK ATIS



FIELD ELEVATION

REMARKS

IN-PERSON CONTACT

906

Snow removal: 701-400-1113
flyhillsboro.com

Larry Mueller
PHONE 701-430-1642
ADDL PHONE: 701-400-1113 FBO
PUBLIC TERMINAL PHONE: Yes



JAMESTOWN JMS

JAMESTOWN REGIONAL

ATTENDANCE: Mon-Fri 8am-5pm

FUEL: 100LL, JET A - Self Service Credit Card

REPAIRS: MAJOR

Pilot Controlled Lights: CTAF

SNOW REMOVAL: Regular

Instrument Approach: Precision

CTAF: 123.0

WX: 118.425



FIELD ELEVATION

REMARKS

IN-PERSON CONTACT

1499

AWOS: 701-251-9002

PHONE: 701-252-6466

ADDL PHONE: 701-952-1515

PUBLIC TERMINAL PHONE: Yes



KENMARE MUNICIPAL

REPAIRS: NONE

Instrument Approach: Non-Precision

STANLEY



IN-PERSON CONTACT

Mark Gravesen
PHONE 701-848-6046
ADDL PHONE: 701-848-6116
PUBLIC TERMINAL PHONE: Yes



KILLDEER
9Y1
DUNN COUNTY

ATTENDANCE: UNATTENDED
FUEL: 100LL JET A - Self Service Credit Card
REPAIRS: NONE

Pilot Controlled Lights: CTAF
SNOW REMOVAL: Confirm after storm
Instrument Approach: Non-Precision

CTAF: 122.9 WX: 118.175 WATFORD CITY



FIELD ELEVATION	REMARKS	IN-PERSON CONTACT
2249	Check NOTAMS Snow removal: 701-260-1235	Gregg Synnes PHONE: 701-260-1235 ADDL PHONE: 701-764-5359 PUBLIC TERMINAL PHONE: No



KINDRED K74

ROBERT ODEGAARD FIELD

ATTENDANCE: MON-FRI 8AM-5PM

FUEL: 100LL - Self Service Credit Card

REPAIRS: MAJOR

Pilot Controlled Lights: CTAF

SNOW REMOVAL: Confirm after storm

Instrument Approach: non-precision

CTAF: 122.9

WX: 124.5 FARGO ATIS



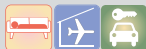
FIELD ELEVATION

REMARKS

IN-PERSON CONTACT

947

Casey Odegaard
PHONE 701-428-9990
ADDL PHONE: 701-238-2305
PUBLIC TERMINAL PHONE: Yes



KULM D03

KULM MUNICIPAL AIRPORT

ATTENDANCE: UNATTENDED
FUEL: NONE REPAIRS: NONE

Pilot Controlled Lights: CTAF - LOW
SNOW REMOVAL: Confirm after storm

CTAF: 122.9 WX: 118.675 OAKES



FIELD ELEVATION	REMARKS	IN-PERSON CONTACT
1959	Call ahead for car. Mike: 701-830-0292 Jess: 701-830-2218	Lorence Holmgren PHONE: 701-830-2205 PUBLIC TERMINAL PHONE: YES



LAKOTA MUNICIPAL

Pilot Controlled Lights: CTAF
SNOW REMOVAL: Confirm after storm
Instrument Approach: non-precision

CTAF: 122.8 WX: 125.875 DEVILS LAKE



FIELD ELEVATION

REMARKS

IN-PERSON CONTACT

1511

Matt Nelson
PHONE 701-247-3112
ADDL PHONE: 701-247-2561
PUBLIC TERMINAL PHONE: YES



LA MOURE 4F9

LA MOURE ROTT MUNICIPAL

ATTENDANCE: M-F 8am-5pm Summer Mos.
FUEL: NO PUBLIC FUEL REPAIRS: NONE

Pilot Controlled Lights: CTAF
SNOW REMOVAL: Confirm after storm

CTAF: 122.9 WX: 118.675 OAKES



FIELD ELEVATION

REMARKS

IN-PERSON CONTACT

1310

Irrigation pivot east of runway.
Cultivated fields 30' from
threshold.

Blane Robert
PHONE: 701-883-5047
ADDL PHONE: 701-709-0284
PUBLIC TERMINAL PHONE: None



LANGDON D55

ROBERTSON FIELD

ATTENDANCE: MON-FRI 8AM-5PM
FUEL: 100LL Self Service Credit Card
REPAIRS: NONE

Pilot Controlled Lights: CTAF
SNOW REMOVAL: Confirm after storm
Instrument Approach: non-Precision

CTAF: 122.8 WX: 118.225



FIELD ELEVATION

REMARKS

IN-PERSON CONTACT

1608

AWOS: 701-256-2121
 Runway 8/26 closed winter mos.
 Noise sensitive area NW of field;
 avoid overflight.
 Midfield taxiway closed.

Ryan Howatt
 PHONE 701-370-9710
 ADDL PHONE: 701-256-3639
 PUBLIC TERMINAL PHONE: NO



LARIMORE 2L1

LARIMORE MUNICIPAL

ATTENDANCE: On Call

FUEL: NONE

REPAIRS: MINOR

LIGHTS: NONE

SNOW REMOVAL: Confirm after storm

CTAF: 122.9

WX: 119.4 GRAND FORKS



FIELD ELEVATION

REMARKS

IN-PERSON CONTACT

1130

Traffic Pattern: Right traffic
runway 12
Runway shoulders soft when
wet.

Jesse Morten
PHONE: 701-343-2065
2nd PHONE Todd Vahna: 218-779-1171
PUBLIC TERMINAL PHONE: Yes

<div><div></div></div>		<div><div>LEEDS</div><div>D31</div><div>LEEDS MUNICIPAL</div></div>			
		<div>ATTENDANCE: UNATTENDED</div> <div>FUEL: NONE REPAIRS: NONE</div>			
		<div>LIGHTS: NONE</div> <div>SNOW REMOVAL: Confirm after storm</div>			
		<div>CTAF: 122.8 WX: 125.875 DEVILS LAKE</div>			
					
FIELD ELEVATION		REMARKS		IN-PERSON CONTACT	
1508		Call ahead for hangar.		Erika Kenner PHONE 406-581-1188 ADDL PHONE: 701-740-7309 PUBLIC TERMINAL PHONE: None	



LIDGERWOOD 4N4

LIDGERWOOD MUNICIPAL

ATTENDANCE: UNATTENDED

FUEL: NONE

REPAIRS: NONE

LIGHTS: NONE

SNOW REMOVAL: NONE

CTAF: 122.9

WX: 118.325

GWINNER



FIELD ELEVATION

REMARKS

IN-PERSON CONTACT

1081

Closed winter months.
Steep drop - water on both
sides of runway.

Alfred Neiber
PHONE: 701-640-0107
PUBLIC TERMINAL PHONE: None



LINTON 7L2

LINTON MUNICIPAL

ATTENDANCE: MON-FRI 8-5PM /ON CALL
FUEL: 100LL, JET A - Self Service Credit Card
REPAIRS: MAJOR

Pilot Controlled Lights: CTAF
SNOW REMOVAL: Confirm after storm
Instrument Approach: non-Precision

CTAF: 122.9 WX: 118.175



FIELD ELEVATION

REMARKS

IN-PERSON CONTACT

1778

AWOS: 701-254-4965

Mike Gunia
PHONE 701-254-5449
ADDL PHONE: 701-321-0913
PUBLIC TERMINAL PHONE: Yes



LISBON 6L3

LISBON MUNICIPAL

ATTENDANCE: On Call

FUEL: 100LL - Self Service Credit Card

REPAIRS: NONE

Pilot Controlled Lights: CTAF

SNOW REMOVAL: Confirm after storm

Instrument Approach: non-Precision

CTAF: 122.9

WX: 118.325 WINNER



FIELD ELEVATION

REMARKS

IN-PERSON CONTACT

1241

Ry 03/21 closed winter months.
Concrete apron for Twin aircraft.

Ben Halstenson
PHONE: 701-739-5463
ADDL PHONE: 701-683-5501

<div></div>		<div><div>MADDOCK 6D3 MADDOCK MUNICIPAL</div></div>			
<div></div>		<div><div>ATTENDANCE: ON CALL</div><div>FUEL: NONE REPAIRS: NONE</div><div>LIGHTS: Low/Solar</div><div>SNOW REMOVAL: Confirm after storm</div></div>			
		<div>CTAF: 122.9 WX: 118.825 HARVEY</div>			
<div></div>					
FIELD ELEVATION		REMARKS		IN-PERSON CONTACT	
<div>1600</div>		<div>Public Apron & Hangar on West side. Private spray pad North. Call ahead for car.</div>		<div>Richard Slater PHONE: 701-739-4875 ADDL PHONE: 701-438-2444 PUBLIC TERMINAL PHONE: None</div>	



MANDAN Y19

MANDAN MUNICIPAL

ATTENDANCE: M-F 8-5pm/Weekends on Call
FUEL: 100LL, JET A-Full/Self Service
Credit Card REPAIRS: MAJOR

Pilot Controlled Lights: CTAF
SNOW REMOVAL: Confirm after storm
Instrument Approach: Non-Precision

CTAF: 122.8 WX: 118.225



FIELD ELEVATION

1944

REMARKS

AWOS: 701-663-0271
Traffic Pattern: Left
Helicopter - Right
Email: manager@mandanairport.com
www.mandanairport.com

IN-PERSON CONTACT

PHONE: 701-663-0669
ADDL PHONE: 701-955-3328
PUBLIC TERMINAL PHONE: Yes

<div><div><div><div></div><div></div></div><div><div></div><div></div></div></div></div>		<div><div><div>MAYVILLE</div><div>D56</div><div>MAYVILLE MUNICIPAL</div></div></div>			
		<div><div>ATTENDANCE: M-F 8-5 SUMMER/ON CALL WINTER</div><div>FUEL: NONE REPAIRS: NONE</div><div>Pilot Controlled Lights: CTAF</div><div>SNOW REMOVAL: Confirm after storm</div></div>			
		<div><div>CTAF: 122.8</div><div>WX: 119.4</div><div>GRAND FORKS</div></div>			
FIELD ELEVATION		REMARKS		IN-PERSON CONTACT	
977				Lance Fugleberg PHONE 701-361-0330 ADDL PHONE: 701-786-4240 PUBLIC TERMINAL PHONE: NO	

MCCLUSKY
7G2

MCCLUSKY MUNICIPAL

ATTENDANCE: UNATTENDED


FUEL: NONE REPAIRS: NONE

LIGHTS: NONE

SNOW REMOVAL: NONE

CTAF: 122.9

WX: 118.825 HARVEY





FIELD ELEVATION	REMARKS	IN-PERSON CONTACT
1900	Runway turf has numerous grass clumps	Larry Gessner PHONE: 701-363-9200 PUBLIC TERMINAL PHONE: None

		<div><div>MCVILLE 8M6 MCVILLE MUNICIPAL</div><div>ATTENDANCE: UNATTENDED FUEL: NONE REPAIRS: NONE</div><div>Pilot Controlled Lights: LOW-CTAF SNOW REMOVAL: Confirm after storm</div><div>CTAF: 122.9 WX: 118.75 COOPERSTOWN</div></div>
		
FIELD ELEVATION	REMARKS	IN-PERSON CONTACT
1473	No lighting 18/36	Chanda Arneson PHONE 701-322-4343 ADDL PHONE: 701-210-2819 PUBLIC TERMINAL PHONE: None



MILNOR 4R6

MILNOR MUNICIPAL AIRPORT

ATTENDANCE: UNATTENDED

FUEL: NONE

REPAIRS: NONE

LIGHTS: Low

SNOW REMOVAL: Confirm after storm

CTAF: 122.9

WX: 118.325 GWINNER



FIELD ELEVATION

REMARKS

IN-PERSON CONTACT

1091

Fuel available for emergency.
Contact manager. Turbulence due
to trees N/S of runway.
www.milnorairport.com

Mark Gainor - chrnm
PHONE: 701-680-1001
ADDL PHONE: 701-680-1146
PUBLIC TERMINAL PHONE: Yes



MINOT MOT

MINOT INTERNATIONAL

ATTENDANCE: 24-HOUR SERVICES
FUEL: 100LL, JET A-Full Service
REPAIRS: MAJOR

Pilot Controlled Lights: CTAF/ Tower Controlled
SNOW REMOVAL: Regular 24-hr Service
Instrument Approach: Precision

GROUND 121.9 TOWER/CTAF: 118.2
WX: 118.725 UNICOM: 122.95



FIELD ELEVATION	REMARKS	IN-PERSON CONTACT
1715	US Customs: 701-838-6704. Dakota territory Air Museum north end of field. www.MOTairport.com ATC HOURS: 0700-2200 AWOS: 701-837-9379	Rick Feltner PHONE 701-857-4725 PUBLIC TERMINAL PHONE: Yes

MINTO MUNICIPAL AIRPORT

FUEL: NONE

REPAIRS: NONE

SNOW REMOVAL: Confirm after storm

CTAF: 122.9

WX: 118.625 GRAFTON



FIELD ELEVATION	REMARKS	IN-PERSON CONTACT
820	Closed winter months.	Chris Misialek PHONE: 701-248-3978 ADDL PHONE: 701-520-1596 PUBLIC TERMINAL PHONE: NONE



MOHALL HBC

MOHALL MUNICIPAL

ATTENDANCE: ON CALL

FUEL: 100LL, JET A - Self Service Credit Card

REPAIRS: NONE

Pilot Controlled Lights: CTAF

SNOW REMOVAL: Confirm after storm

Instrument Approach: Non-Precision

CTAF: 122.8

WX: 118.725 MINOT
(60 NM)



FIELD ELEVATION

REMARKS

IN-PERSON CONTACT

1649

Mike Nehring
PHONE 701-263-1008/756-7177
ADDL PHONE: 701-756-7258/6464
PUBLIC TERMINAL PHONE: Yes



Car available upon request



MOTT 3P3

MOTT MUNICIPAL

ATTENDANCE: UNATTENDED

FUEL: 100LL - Self Service Credit Card

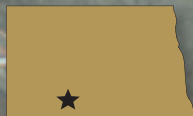
REPAIRS: NONE

Pilot Controlled Lights: CTAF

SNOW REMOVAL: Confirm after storm

CTAF: 122.9

WX: 118.375 DICKINSON
(60 NM)





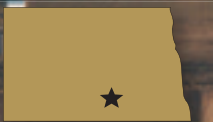
FIELD ELEVATION

REMARKS

IN-PERSON CONTACT

2413

Derek Mayer
PHONE: 701-260-3525
ADDL PHONE: 701-440-0281
PUBLIC TERMINAL PHONE: NONE

		<div>NAPOLEON 5B5 NAPOLEON MUNICIPAL</div>	
		ATTENDANCE: UNATTENDED FUEL: No Public Fuel REPAIRS: NONE	
		Pilot Controlled Lights: CTAF SNOW REMOVAL: Contact after storm	
		CTAF: 122.9 WX: 118.175 LINTON	
			
			
FIELD ELEVATION		REMARKS	IN-PERSON CONTACT
1985		Runway 8/26 closed in winter	Rod Mattern 701-321-0767 701-426-4537 PUBLIC TERMINAL PHONE: None

NEW ROCKFORD
8J7

TOMLINSON FIELD

ATTENDANCE: UNATTENDED

FUEL: NONE

REPAIRS: NONE

LIGHTS: Low-Sunset to Sunrise

SNOW REMOVAL: Confirm after storm

CTAF: 122.9

WX: 118.575 CARRINGTON



FIELD ELEVATION

REMARKS

IN-PERSON CONTACT

1533

Troy Georgeson
PHONE: 701-454-6588
PUBLIC TERMINAL PHONE: None

<div><div></div><div></div></div>		<div>NEW TOWN</div> <div>05D</div> <div>NEW TOWN MUNICIPAL</div>	
		<div>ATTENDANCE: UNATTENDED</div> <div>FUEL: NONE REPAIRS: NONE</div> <div>Pilot Controlled Lights: CTAF</div> <div>SNOW REMOVAL: Confirm after storm</div> <div>INSTRUMENT APPROACH: Non-Precision</div>	
		<div>CTAF: 122.9</div> <div>WX: 121.1</div> <div>STANLEY</div>	
			
<div></div>			
FIELD ELEVATION		REMARKS	IN-PERSON CONTACT
1923		Windcone and PAPs on Runway 12 and 30 ends - lights on continuously.	Mylo Wolding PHONE 701-898-4918 ADDL PHONE: 701-421-9019 PUBLIC TERMINAL PHONE: None



NORTHWOOD 4V4

MUNICIPAL - VINCE FIELD

ATTENDANCE: MON-FRI 8-5PM
FUEL: 100LL-Call Ahead REPAIRS: MAJOR

Pilot Controlled Lights: CTAF
SNOW REMOVAL: Confirm after storm
Instrument Approach: non-Precision

CTAF: 122.8 WX: 119.4 GFK ATIS



FIELD ELEVATION	REMARKS	IN-PERSON CONTACT
1119	Traffic Pattern: Runway 8 right traffic. For fuel contact: (701) 587-5171	Rich Altendorf PHONE: 701-587-5171 ADDL PHONE: 218-779-6567 PUBLIC TERMINAL PHONE: Yes



OAKES 2D5

OAKES MUNICIPAL

ATTENDANCE: M-F 8AM-5PM
FUEL: 100LL, JET A REPAIRS: NONE

Pilot Controlled Lights: CTAF
SNOW REMOVAL: Confirm after storm
Instrument Approach: non-Precision

CTAF: 122.9 WX: 118.675



FIELD ELEVATION

REMARKS

IN-PERSON CONTACT

1334

AWOS: 701-742-3991
Ry 17/35 closed winter months.
Turf runway clumpy. Call ahead
for fuel.

Travis McPherson
PHONE 701-710-1220
ADDL PHONE: 701-678-9410
PUBLIC TERMINAL PHONE: Yes



PAGE
64G

PAGE REGIONAL

ATTENDANCE: M-F 8-5/ on call weekends
FUEL: 100LL Call ahead REPAIRS: MAJOR

LIGHTS: NONE
SNOW REMOVAL: Confirm after storm

CTAF: 122.9 WX: 118.725 VALLEY CITY



FIELD ELEVATION	REMARKS	IN-PERSON CONTACT
1218	Call ahead for fuel. Road south of airport. Grain fields at both Ry ends.	Tim McPherson PHONE: 701-668-2302 ADDL PHONE: 701-799-9027 PUBLIC TERMINAL PHONE: Yes



PARK RIVER Y37

W.C. SKJERVEN

ATTENDANCE: MON-FRI 8-5PM/ ON CALL

FUEL: 100LL-Call ahead

REPAIRS: MAJOR

Pilot Controlled Lights: CTAF

SNOW REMOVAL: Confirm after storm

CTAF: 122.8

WX: 118.625 GRAFTON



FIELD ELEVATION

REMARKS

IN-PERSON CONTACT

1104

Ry 4/22 closed winter months & surface clumpy.

Glenn Wharam
PHONE 701-331-1110
ADDL PHONE: 701-331-0818
PUBLIC TERMINAL PHONE: No



PARSHALL Y74

PARSHALL-HANKINS

ATTENDANCE: On Call
FUEL: 100LL-Self Service Credit Card
REPAIRS: NONE

PILOT CONTROLLED LIGHTS: CTAF
SNOW REMOVAL: Call after storm

CTAF: 122.9 WX: 121.1 STANLEY



FIELD ELEVATION

REMARKS

IN-PERSON CONTACT

2032

City snow removal 862-3459.

Richard Bolkan
PHONE: 701-898-3144
PUBLIC TERMINAL PHONE: Yes



PEMBINA PMB

THOMAS NORD FIELD

ATTENDANCE: 8-8, 7 DAYS A WEEK
FUEL: 100LL-Call ahead
REPAIRS: MAJOR

Pilot Controlled Lights: CTAF
SNOW REMOVAL: Confirm after storm
Instrument Approach: Non-Precision

CTAF: 122.8 WX: 126.47 HALLOCK



FIELD ELEVATION



REMARKS

IN-PERSON CONTACT

795

US Customs service-Phone:
701-825-5849 or 701-825-6201.

Terry Nord
PHONE 701-825-6615
ADDL PHONE: 701-331-4458
PUBLIC TERMINAL PHONE: Yes

<div></div>		<div>PLAZA Y99 TRULSON FIELD</div>	
<div></div>		<div>ATTENDANCE: UNATTENDED FUEL: NONE REPAIRS: NONE</div>	
		<div>LIGHTS: NONE SNOW REMOVAL: NONE</div>	
		<div>CTAF: 122.9 WX: 121.1 STANLEY</div>	
<div></div>			
FIELD ELEVATION		REMARKS	IN-PERSON CONTACT
2105		Runway 26 - right traffic. Call prior for conditions. House and trees close to runway	Jay Harstad PHONE: 701-898-3387/453-3387 PUBLIC TERMINAL PHONE: None

		<div><div>RICHARDTON</div><div>4E8</div><div>RICHARDTON MUNICIPAL</div></div>	
		ATTENDANCE: UNATTENDED	
		FUEL: NONE REPAIRS: NONE	
		LIGHTS: NONE	
		SNOW REMOVAL: NONE	
		CTAF: 122.9 WX: 118.375 DICKINSON	
			
FIELD ELEVATION		REMARKS	
2498		120' wind tower 800' north. Cattle grazing Aug-Dec. Call airport manager 24hr. prior to landing	
		IN-PERSON CONTACT	
		Jody Hoff PHONE 701-974-3315 ADDL PHONE: 701-974-4230 city PUBLIC TERMINAL PHONE: None	

FIELD ELEVATION	REMARKS	IN-PERSON CONTACT
1723	Runway 11 - Right-traffic. Runway 11 Displaced Threshold. Seasonal - Closed in winter. Runway is gravel.	Kyle Wanner PHONE: 701-328-9650 ADDL PHONE: 701-425-5926 PUBLIC TERMINAL PHONE: NONE

		
<div> <div> ROLETTE 2H9 ROLETTE AIRPORT </div> <div> ATTENDANCE: UNATTENDED FUEL: NONE REPAIRS: NONE Pilot Controlled Lights: CTAF SNOW REMOVAL: Confirm after storm CTAF: 122.8 WX: 118.125 ROLLA </div> </div>		
		
<div>  </div>	FIELD ELEVATION	REMARKS
1623	Rwy width only 40'. Lights 20' from runway edge.	IN-PERSON CONTACT Mark Myhre PHONE 701-246-3395 ADDL PHONE: 701-246-3348 PUBLIC TERMINAL PHONE: None



ROLLA 06D

ROLLA MUNICIPAL

ATTENDANCE: M-F 8am-5pm

FUEL: 100LL, JET A - Self Service Credit Card

REPAIRS: NONE

Pilot Controlled Lights: CTAF

SNOW REMOVAL: Confirm after storm

Instrument Approach: non-Precision

CTAF: 122.8

WX: 118.125



FIELD ELEVATION

REMARKS

IN-PERSON CONTACT

1822

Ry 7/25 closed winters.
AWOS:701-477-0055

Gordon Krech
PHONE: 701-477-6780
ADDL PHONE: 701-550-9884
PUBLIC TERMINAL PHONE: Yes



RUGBY RUG

RUGBY MUNICIPAL

ATTENDANCE: Mon-Fri 8-5pm/ On Call
FUEL: 100LL, JET A-Self Service Credit Card
REPAIRS: NONE

Pilot Controlled Lights: CTAF
SNOW REMOVAL: Confirm after storm
Instrument Approach: non-Precision

CTAF: 122.8 WX: 118.475



FIELD ELEVATION

1549

REMARKS

AWOS: 701-776-6100.

IN-PERSON CONTACT

Steve Schneider
PHONE 701-776-5171
ADDL PHONE: 701-208-1630
PUBLIC TERMINAL PHONE: Yes



STANLEY 08D

STANLEY MUNICIPAL

ATTENDANCE: ON CALL

FUEL: 100LL 92 AUTO - Self service credit card

REPAIRS: NONE

Pilot Controlled Lights: CTAF

SNOW REMOVAL: Confirm after storm

Instrument Approach: non-precision

CTAF: 122.9

WX: 121.1



FIELD ELEVATION

REMARKS

IN-PERSON CONTACT

2245

Road south of airport
AWOS: 701-628-1737

Steve Martens
PHONE: 701-629-0044
ADDL PHONE: 701-629-1244
PUBLIC TERMINAL PHONE: Yes

		<div>ST. THOMAS 4S5 ST. THOMAS MUNICIPAL</div>			
		ATTENDANCE: M-F 8AM-5PM SUMMER FUEL: NONE REPAIRS: NONE			
		Pilot Controlled Lights: CTAF SNOW REMOVAL: Confirm after storm			
		CTAF: 122.9 WX: 118.275 CAVALIER			
FIELD ELEVATION		REMARKS		IN-PERSON CONTACT	
839		NO runway markings. Roadway N and S of airport		John Blair PHONE 701-520-1597 ADDL PHONE: 701-257-6765 PUBLIC TERMINAL PHONE: Yes	



TIOGA D60

TIOGA MUNICIPAL

ATTENDANCE: M-F 7am-5pm/On Call
FUEL: 100LL, JET A - FULL SERVICE
REPAIRS: MAJOR

Pilot Controlled Lights: CTAF
SNOW REMOVAL: Confirm after storm
Instrument Approach: non-Precision

CTAF: 122.9

WX: 118.575



FIELD ELEVATION

2270

REMARKS

AWOS: 701-664-4490
Rental cars at Tioga Aero Center

IN-PERSON CONTACT

Tioga Aero Center
PHONE: 701-641-6020
PUBLIC TERMINAL PHONE: Yes



TOWNER D61

TOWNER MUNICIPAL

ATTENDANCE: UNATTENDED

FUEL: NONE

Pilot Controlled Lights: CTAF

SNOW REMOVAL: Confirm after storms

CTAF: 122.8

WX: 118.475 RUGBY



FIELD ELEVATION

REMARKS

IN-PERSON CONTACT

1484

Runway 16 - 30' pole 500 ft.
from end.
Runway 34 - 3' ditch.

Daniel Gunter
PHONE 701-537-3519
ADDL PHONE: 701-537-5687
PUBLIC TERMINAL PHONE: NONE



TURTLE LAKE 91N

TURTLE LAKE MUNICIPAL

ATTENDANCE: UNATTENDED

FUEL: NONE

REPAIRS: NONE

Pilot Controlled Lights: CTAF

SNOW REMOVAL: Confirm after storm

CTAF: 122.8

WX: 118.675 HAZEN



FIELD ELEVATION

1916

REMARKS

Runway 8 end 10' dropoff 50'
from threshold.

IN-PERSON CONTACT

Jon Seeger
PHONE: 701-220-0707
PUBLIC TERMINAL PHONE: None



WAHPETON BWP

HARRY STERN

ATTENDANCE: Mon-Fri 8-5pm

FUEL: 100LL, JET A - Self Service Credit Card

REPAIRS: MAJOR

Pilot Controlled Lights: CTAF

SNOW REMOVAL: Confirm after storm

Instrument Approach: Non-Precision

CTAF: 123.0

WX: 127.875



FIELD ELEVATION

REMARKS

IN-PERSON CONTACT

968

AWOS: 701-642-9800.
Turf runway closed winters.
Taxi Service: 701-642-5757.

Jon Klein
PHONE: 701-361-0230
ADDL PHONE: 701-642-5777
PUBLIC TERMINAL PHONE: Yes



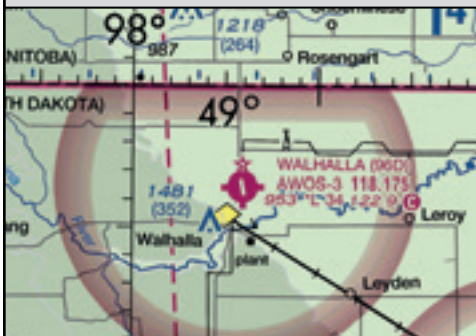
WALHALLA 96D

WALHALLA MUNICIPAL

ATTENDANCE: On Call
FUEL: 100LL - Self Service Credit Card
REPAIRS: NONE

Pilot Controlled Lights: CTAF
SNOW REMOVAL: Confirm after storm
Instrument Approach: non-precision

CTAF: 122.9 WX: 118.175



FIELD ELEVATION

REMARKS

IN-PERSON CONTACT

953

AWOS: 701-549-3402

David Carignan
PHONE 701-549-3500
ADDL PHONE: 701-265-2617
PUBLIC TERMINAL PHONE: None



WASHBURN 5C8

WASHBURN MUNICIPAL

ATTENDANCE: UNATTENDED

FUEL: NONE

REPAIRS: NONE

Pilot Controlled Lights: CTAF

SNOW REMOVAL: Confirm after storm

CTAF: 122.9

WX: 118.675

HAZEN



FIELD ELEVATION

REMARKS

IN-PERSON CONTACT

1908

Turf runway closed winter months.

Lyle Lelm
PHONE: 701-390-3926
ADDL PHONE: 701-315-0240
PUBLIC TERMINAL PHONE: None



WATFORD CITY S25

WATFORD CITY MUNICIPAL

ATTENDANCE: M-F 8AM-5PM/ON CALL
FUEL: 100LL, JET A - Full Service
REPAIRS: MINOR

Pilot Controlled Lights: CTAF
 SNOW REMOVAL: Confirm after storm
 Instrument Approach: Non-Precision

CTAF: 122.8 WX: 118.125



**AIRPORT CLOSED FOR
CONSTRUCTION SUMMER 2021**

Planned reopening Fall 2021
Check NOTAMS

12

4402 x 75

30



FIELD ELEVATION

REMARKS

IN-PERSON CONTACT

2111

AWOS: 701-842-4855.
 Manager Cell: 701-570-2646

Luke Taylor
 PHONE 701-444-3207
 Watford Aero Services: 701-300-3045
 PUBLIC TERMINAL PHONE: Yes



WEST FARGO D54

WEST FARGO MUNICIPAL

ATTENDANCE: Mon-Fri 8-5pm
FUEL: 100LL-Self Service Credit Card
REPAIRS: MAJOR

Pilot Controlled Lights: CTAF
SNOW REMOVAL: Confirm after storm

CTAF: 122.7 WX: 124.5 ATIS FARGO



FIELD ELEVATION

REMARKS

IN-PERSON CONTACT

896

Traffic Pattern 800 AGL.
Runway 18 right traffic.
Parachute jumping.

Robbie Grande
PHONE: 701-371-2655
PUBLIC TERMINAL PHONE: Yes

<div></div>		<div><div>WESTHOPE</div><div>D64</div><div>WESTHOPE MUNICIPAL</div></div>			
<div></div>		<div>ATTENDANCE: UNATTENDED</div> <div>FUEL: NONE REPAIRS: NONE</div>			
		<div>LIGHTS: Inop Indefinitely</div> <div>SNOW REMOVAL: Confirm after storm</div>			
		<div>CTAF: 122.9 WX: 118.725 MINOT</div>			
<div></div>					
<div>FIELD ELEVATION</div>		<div>REMARKS</div>		<div>IN-PERSON CONTACT</div>	
<div>1492</div>		<div>Ry 13 3' Road 100' outbound.</div>		<div>Chad Tofteland</div> <div>PHONE 701-263-1304</div> <div>ADDL PHONE: 701-263-1383</div> <div>PUBLIC TERMINAL PHONE: Outside</div>	



WILLISTON XWA

WILLISTON BASIN INTERNATIONAL AIRPORT

ATTENDANCE: 7am - 7pm
FUEL: 100LL, JET A-FULL SERVICE
REPAIRS: MAJOR

Pilot Controlled Lights: CTAF
SNOW REMOVAL: Regular
Instrument Approach: Precision

CTAF: 122.8 WX: 125.925



FIELD ELEVATION	REMARKS	IN-PERSON CONTACT
2353	AWOS: 701-875-2118 US Customs: 701-875-2128	Anthony Dudas PHONE: 701-875-8594 ADDL PHONE: 701-713-4334 PUBLIC TERMINAL PHONE: YES

<div></div>		<div><div>WISHEK</div><div>6L5</div><div>WISHEK MUNICIPAL</div></div>	
		<div>ATTENDANCE: UNATTENDED</div> <div>FUEL: NONE REPAIRS: NONE</div>	
		<div>Pilot Controlled Lights: CTAF</div> <div>SNOW REMOVAL: Confirm after storm</div>	
		<div>CTAF: 122.9 WX: 118.175 LINTON</div>	
			
FIELD ELEVATION		REMARKS	IN-PERSON CONTACT
2042			<div>Paul Just</div> <div>PHONE: 701-426-8085</div> <div>ADDL PHONE: 701-452-2314/4291</div> <div>PUBLIC TERMINAL PHONE: Outside</div>

METAR ABBREVIATIONS

ABBREVIATIONS

AOI	Automated Observation without precipitation discriminator (rain/snow)
AO2	Automated Observation with precipitation discriminator (rain/snow)
AMD	Amended Forecast (TAF)
BECMG	Becoming (expected between 2-digit beginning hour and 2-digit ending hour)
BKN	Broken
CLR	Clear at or below 12,000 feet (AWOS/ASOS report)
COB	Correction to the observation
FEW	1 or 2 octas (eighths) cloud coverage
FM	From (4 digit beginning time in hours and minutes)
LDG	Landing
M	In temperature field means “minus” or below zero
M	In RVR listing indicates visibility less than lowest reportable sensor value (e.g. M600)
NO	Not available (e.g. SLPNO, RVRNO)
NSW	No Significant Weather
OVC	Overcast
P	In RVR indicates visibility greater than highest reportable sensor value (e.g. P6000FT)
P6SM	Visibility greater than 6 SM (TAF only)
PROB40	Probability 40 percent
R	Runway (used in RVR measurement)
RMK	Remark
RV/RWY	Runway
SCT	Scattered
SKC	Sky Clear
SLP	Sea Level Pressure (e.g., 1013 reported as 013)
SM	Statute mile(s)
SPECI	Special Report
TEMPO	Temporary changes expected (between 2-digit beginning hour and 2-digit ending hour)
TKOF	Takeoff
T01760158, 10142, 20012 and 401120084	In Remarks-examples of temperature information
V	Varies (wind direction and RVR)
VC	Vicinity
VRB	Variable wind direction when speed is less than or equal to 6 knots
VV	Vertical Visibility
WS	Wind shear (In TAFs, low level and not associated with convective activity)

DESCRIPTORS

BC	Patches	MI	Shallow
BL	Blowing	PR	Partial
DR	Low Drifting	SH	Showers
FZ	Supercooled/freezing	TS	Thunderstorm

WEATHER PHENOMENA

BR	Mist	PE	Ice Pellets
DS	Dust Storm	P0	Dust/Sand Whirls
DU	Widespread Dust	PY	Spray
DZ	Drizzle	RA	Rain
FC	Funnel Cloud	SA	Sand
FC	Tornado/Water Spout	SG	Snow Grains
FG	Fog	SN	Snow
FU	Smoke	SQ	Squall
GA	Hail	SS	Sandstorm
GS	Small Hail/Snow Pellets	UP	Unknown Precipitation
HZ	Haze		(Automated Observations)
IC	Ice Crystals	VA	Volcanic Ash

CLOUD TYPES

CB	Cumulonimbus	TCU	Towering Cumulus
----	--------------	-----	------------------

CLOSE YOUR FLIGHT PLAN

FLIGHT PLAN										AFSS 1-800-992-7433									
1. TYPE		2. AIRCRAFT IDENTIFICATION		3. AIRCRAFT TYPE SPECIAL EQUIPMENT		4. TRUE AIRSPEED		5. DEPARTURE POINT		6. DEPARTURE TIME		7. CRUISING ALTITUDE							
VFR										PROPOSED (Z)		ACTUAL (Z)							
D/FR						KTS													
5. ROUTE OF FLIGHT																			
9. DESTINATION (Name of Airport and City)				10. EST TIME ENROUTE		11. REMARKS													
				HOURS MINUTES															
12. FUEL ON BOARD				13. ALTERNATE AIRPORT				14. PILOT'S NAME, ADDRESS & TELEPHONE NUMBER & AIRCRAFT HOME BASE											
HOURS		MINUTES						17. DESTINATION CONTACT/TELEPHONE (OPTIONAL)											
								15. NUMBER ABOARD											
16. COLOR OF AIRCRAFT																			

- /X - NO TRANSPONDER.
/T - TRANSPONDER NO ALTITUDE ENCODING CAPABILITY.
/U - TRANSPONDER WITH ALTITUDE ENCODING CAPABILITY.
/D - DME, BUT NO TRANSPONDER.
/B - DME, AND TRANSPONDER, BUT NO ALTITUDE ENCODING CAPABILITY.
/A - DME AND TRANSPONDER WITH ALTITUDE ENCODING CAPABILITY.
/M - TACAN ONLY, BUT NO TRANSPONDER.
/N - TACAN ONLY AND TRANSPONDER, BUT NO ALTITUDE ENCODING CAPABILITY.
/F - TACAN ONLY AND TRANSPONDER WITH ALTITUDE ENCODING CAPABILITY.
/C - RNAV AND TRANSPONDER, BUT NO ALTITUDE ENCODING CAPABILITY.
/R - RNAV AND TRANSPONDER WITH ALTITUDE ENCODING CAPABILITY.
/W - RNAV BUT NO TRANSPONDER.
/G - GPS













FLIGHT LOG						
DEPARTURE POINT	VOR	RADIAL	DISTANCE	TIME		GROUND SPEED
	IDENT.	TO	LEG	POINT - POINT	TAKE OFF	
	FREQ.	FROM	REMAINING	CUMMULATIVE		
CHECK POINT					ETA	
					ATA	
DESTINATION						
			TOTAL			
PREFLIGHT CHECK LIST				DATE		
EN ROUTE WEATHER / WEATHER ADVISORIES						
DESTINATION WEATHER				WINDS ALOFT		
ALTERNATE WEATHER						
FORECASTS						
NOTAMS / AIRSPACE RESTRICTIONS						

GUIDE FOR AIRFIELD SIGNS

SIGN and LOCATION

PILOT ACTION or SIGN PURPOSE

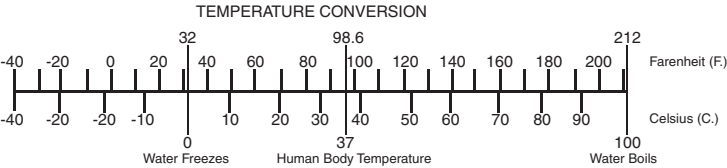
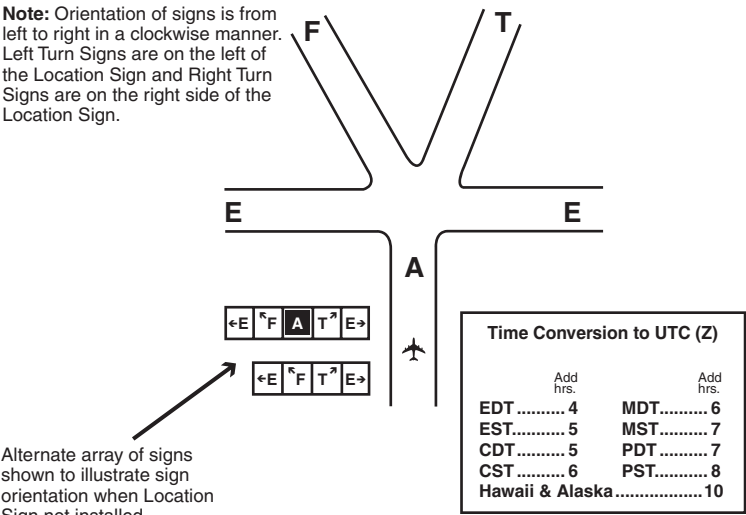
 <p>On Taxiways at Intersection with a Runway</p>	<p>Controlled Airport - Hold unless ATC Clearance has been received.</p> <p>Uncontrolled Airport - Proceed when no traffic conflict exists.</p>
 <p>Runway / Runway Intersection</p>	<p>Taxiing - Same action as above.</p> <p>Taking Off or Landing - Disregard unless a "Land, Hold Short" clearance has been accepted.</p>
 <p>Taxiway in Runway Approach of Departure Area</p>	<p>Controlled Airport - Hold when instructed by ATC.</p> <p>Uncontrolled Airport - Proceed when no traffic conflict exists.</p>
 <p>ILS Critical Area</p>	<p>Hold when approaches are being made with visibility less than 2 miles or ceiling less than 800 feet.</p>
 <p>Areas where Aircraft are Forbidden to Enter</p>	<p>Do not enter.</p>
 <p>Taxiway</p>	<p>Identifies taxiway on which aircraft is positioned.</p>
 <p>Runway</p>	<p>Identifies runway on which aircraft is positioned.</p>
 <p>Edge of Protected Airway for Runway</p>	<p>These signs are used on controlled airports to identify the boundary of the runway protected area. It is intended that pilots exiting this area would use this sign as a guide to judge when the aircraft is clear of the protected area.</p>
 <p>Edge of ILS Critical Area</p>	<p>These signs are used on controlled airports to identify the boundary of the LS critical area. It is intended that pilots exiting this area would use this sign as a guide to judge when the aircraft is clear of the ILS critical area.</p>
 <p>Taxiways and Runway</p>	<p>On Taxiways - Provides direction to turn at next intersection to maneuver aircraft onto named runway.</p>

GUIDE FOR AIRFIELD SIGNS

SIGN and LOCATION	PILOT ACTION or SIGN PURPOSE
<div><div>22➔</div><div>Taxiways</div></div>	Provides general taxiing direction to named runway.
<div><div>TERM➔</div><div>Taxiways and Runways</div></div>	Provides general taxiing direction to identified destination.
<div><div>4</div><div>Runway</div></div>	Provides remaining runway length in 1,000 feet increments.

ARRANGEMENT OF SIGNS AT INTERSECTION

Note: Orientation of signs is from left to right in a clockwise manner. Left Turn Signs are on the left of the Location Sign and Right Turn Signs are on the right side of the Location Sign.



INTERCEPTING SIGNALS

Signals initiated by intercepting aircraft and responses by intercepted aircraft (as set forth in ICAO Annex 2-Appendix A, 2.1)

Series	Intercepting Aircraft Signals	Meaning	Intercepted Aircraft Responds	Meaning
1	<p>Day - Rocking wings from a position slightly above and ahead of, and normally to the left of, the intercepted aircraft and, after acknowledgement, a slow level turn, normally to the left, on to the desired heading.</p> <p>Night - Same and, in addition, flashing navigational lights at irregular intervals.</p> <p>Note 1 - Meteorological conditions or terrain may require the intercepting aircraft to take up a position slightly above and ahead of, and to the right of, the intercepted aircraft and to make the subsequent turn to the right.</p> <p>Note 2 - If the intercept aircraft is not able to keep pace with the intercepting aircraft, the latter is expected to fly a series of race-track patterns and to rock its wings each time it passes the intercepted aircraft.</p>	You have been intercepted! Follow me.	<p>Aeroplanes: Day - Rocking wings and following.</p> <p>Night - Same and, in addition, flashing navigational lights at regular intervals.</p> <p>Helicopters: Day or Night-Rocking Aircraft, flashing navigational lights at irregular intervals and following.</p>	Understood, will comply.
2	Day or Night - An abrupt break-away maneuver from the intercepted aircraft consisting of a climbing turn of 90 degrees or more without crossing the line of flight of the intercepted aircraft.	You may proceed.	<p>Aeroplanes: Day or Night - Rocking Wings.</p> <p>Helicopters: Day or Night - Rocking Aircraft.</p>	Understood, will comply.
3	<p>Day - Circling aerodrome, lowering landing gear and over-flying runway in direction of landing or, if the intercepted aircraft is a helicopter, over-flying the helicopter landing area.</p> <p>Night - Same and, in addition, showing steady landing lights.</p>	Land at this aerodrome.	<p>Aeroplanes: Day - Lowering landing gear, following the intercepting aircraft and, if after over-flying the runway landing is considered safe, proceed to land. Night - Same and, in addition, showing steady lights (if carried).</p> <p>Helicopters: Day or Night - Follow the intercepted aircraft and proceed to land, showing a steady landing light (if carried).</p>	Understood, will comply.
4	Day or Night - Raising landing gear (if fitted) and flashing landing lights while passing over runway in use or helicopter landing area at a height exceeding 2,000 ft (in case of helicopter, at a height exceeding 170 ft, but not exceeding 330 ft) above the aerodrome level, and continuing to circle runway in use or helicopter landing area. If unable to flash landing lights, flash any other lights available.	Aerodrome you have designated is inadequate.	<p>Day or Night - If it is desired that the intercepted aircraft follow the intercepting aircraft to an alternate aerodrome, the intercepting aircraft raises its landing gear (if fitted) and uses the Series 1 signals prescribed for intercepting aircraft.</p> <p>It is decided to release the intercepted craft, the intercepting aircraft uses the Series 2 signals prescribed for intercepting aircraft.</p>	Understood, follow me. Understood, you may proceed.
5	Day or Nights - Regular switching on and off of all available lights but in such a manner as to be distinct from flashing lights.	Cannot comply.	Day or Night - Use Series 2 signals prescribed for intercepting aircraft.	Understood
6	Day or Nights - Irregular flashing of all available lights.	In distress.	Day or Night - Use Series 2 signals prescribed for intercepting aircraft.	Understood

Light Gun Signals

Color and Type of Signal	Movement of Vehicles, Equipment and Personnel	Aircraft on the Ground	Aircraft in Flight
Steady Green	Cleared to Cross, Proceed or Go	Cleared for Take-off	Cleared to Land
Flashing Green	Not Applicable	Cleared for Taxi	Return for Landing, to be Followed by Steady Green at the Proper Time
Steady Red	STOP	STOP	Give Way to Other Aircraft and Continue Circling
Flashing Red	Clear the Taxiway/Runway	Taxi Clear of the Runway in Use.	Airport Unsafe, Do not Land
Flashing White	Return to Starting Point on Airport	Return to Starting Point on Airport	Not Applicable
Alternating Red and Green	Exercise Extreme Caution	Exercise Extreme Caution	Exercise Extreme Caution

10 Ways To Help Prevent

Runway Incursions

1 See The “Big Picture”

Monitor both ground and tower communications when possible.

2 Transmit Clearly

Make your instructions and read-backs complete and easy to understand.

3 Listen Carefully

Listen to your clearance. Listen to what you read back. Do not let communications become automatic.

4 Copy Clearances

Clearances can change. Keep a note pad and copy your clearance. If needed, refer to your notes.

5 Situational Awareness

Know your location. If unfamiliar with an airport keep a current airport diagram available for easy reference.

6 Admit When Lost

If you get lost on an airport, ask ATC for help. Better to damage your pride than your airplane.

7 Sterile Cockpit

Maintain a sterile cockpit until reaching cruising altitude. Explain to your passengers that talking should be kept to a minimum.

8 Understand Signs, Lights And Markings

Keep current with airport signs, lights and markings. Know what they mean and what action to take.

9 Never Assume

Do not take clearances for granted. Look both ways before entering or crossing taxiways and runways.

10 Follow Procedures

Establish safe procedures for airport operations. Then follow them.

For more information see the following:
www.faa.gov/airports/runway-safety

Automated Weather Observation System

The Automated Weather Observation System (AWOS) enhances safety by providing critical airport weather information to pilots to be used for flight planning and in-flight decision-making. The system provides real-time weather observations including wind, visibility, current weather, sky conditions, temperature, dew point, altimeter setting, and remarks, such as density altitude and local airport conditions.

AWOS information can be accessed in a variety of ways, including radio frequency, telephone and weather terminals at airports with AWOS. It can also be accessed from a variety of Web sites, most AWOS information is disseminated nationwide through a system called NADIN, making it available to sources like Flight Service Stations, the National Weather Service and Weather Channel.

What every pilot should know about AWOS

Wind

- taken every second and a running 2-minute average is updated every 5 seconds
- wind speeds of less than 3 knots are reported as calm
- if the difference between the highest 5-second average and 2-minute average exceeds 5 knots, gusts are reported
- wind direction is reported from the nearest 10 degree magnetic heading

Visibility

- readings are taken every 15 seconds and are averaged over a 10-minute period

Present weather

- a precipitation sensor samples every 15 seconds
- temperature and visibility measurements are used to determine precipitation type

Sky conditions (ceilings)

- readings are taken every 30 seconds and averaged over a 30-minute period
- ceiling measurements are rounded as follows:
 - nearest 100' up to 5000' AGL
 - nearest 500' from 5000'-10,000' AGL
 - nearest 1000' above 10,000'

Temperature and dew point

- four, 1-minute averages are used to determine the temperature

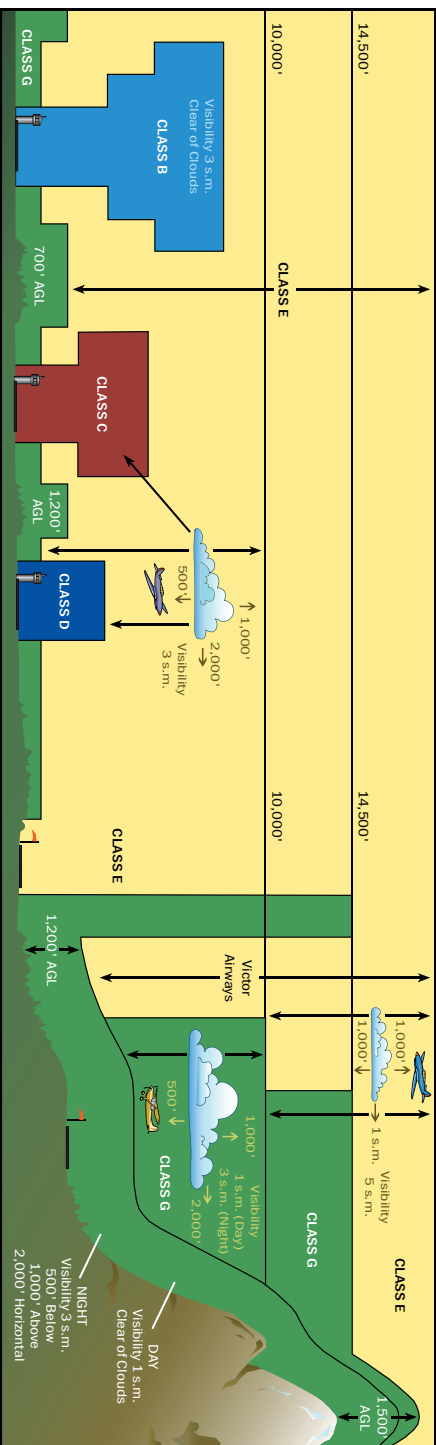
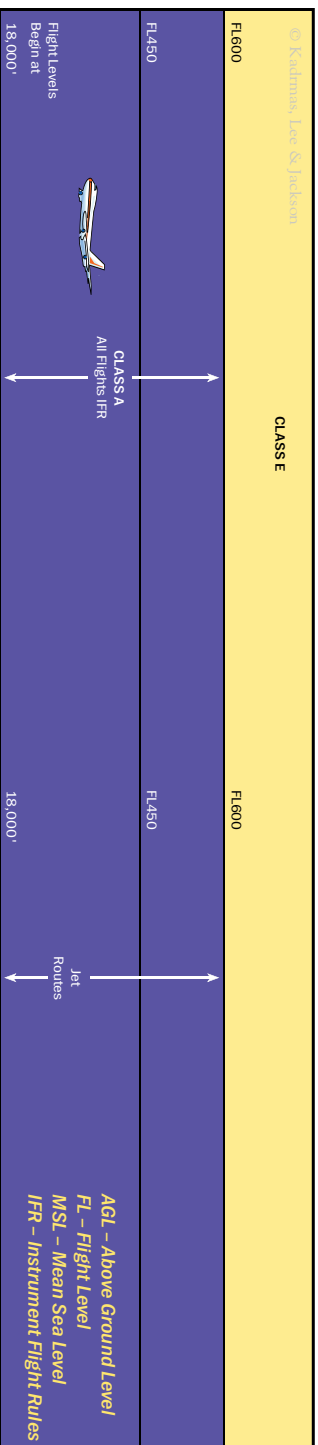
Altimeter (barometric pressure)




- pressure sensors take readings every 10 seconds and a 1-minute average is calculated




Remarks

- a calculated density altitude report is provided, if density altitude is greater than 1000' above the airport's field elevation
- Occasionally, airport managers will provide recorded remarks regarding NOTAM's or local airport conditions.

AWOS is maintained by the airport in North Dakota and is continuously monitored to ensure its operational status. Individual sites are also maintained and calibrated on a regular basis to ensure reliability and accuracy. As with any electronic device, care must be used when interpreting data. By knowing how AWOS data is collected, a pilot can better understand the information they are receiving.

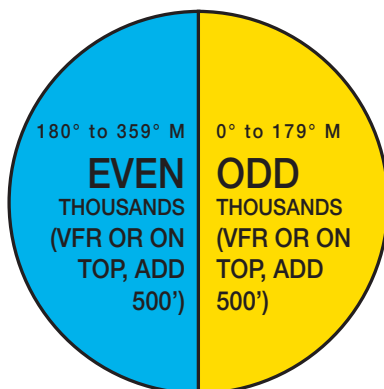


Classification	Definition
 CLASS A	Generally airspace above 18,000 feet MSL up to and including FL 600.
 CLASS B	Generally multi-layered airspace from the surface up to 10,000 feet MSL surrounding the nation's busiest airports.
 CLASS C	Generally airspace from the surface to 4,000 feet AGL surrounding towered airports with service by radar approach control.

Classification	Definition
 CLASS D	Generally airspace from the surface to 2,500 feet AGL surrounding towered airports.
 CLASS E	Generally controlled airspace that is not Class A, Class B, Class C, or Class D.
 CLASS G	Generally uncontrolled airspace that is not Class A, Class B, Class C, Class D, or Class E.

DIRECTIONAL ALTITUDE CHART

CRUISING ALTITUDES
(IFR WITHIN CONTROLLED AIRSPACE
MAY BE MODIFIED BY ATC)



Below 29,000' MSL

MORSE CODE AND PHONETIC ALPHABET

Alfa . _ _	Juliett . _ _ _	Sierra ...	2 .. _ _ _
Bravo _ _ _	Kilo _ _ .	Tango _ _	3 ... _ _
Charlie _ . .	Lima . _ .	Uniform _ _ _	4
Delta _ _ .	Mike _ _ _	Victor ... _ _	5
Echo .	November _ .	Whiskey . _ _ _	6
Foxtrot .. _ .	Oscar _ _ _ _	Xray _ _ . _	7 _ _ _ .
Golf _ _ _ .	Papa . _ _ .	Yankee _ . _ _ _	8 _ _ _ . .
Hotel	Quebec _ _ . _	Zulu _ _ _ .	9 _ _ _ . .
India ..	Romeo . _ .	1. _ _ _ _ _	0 _ _ _ _ .

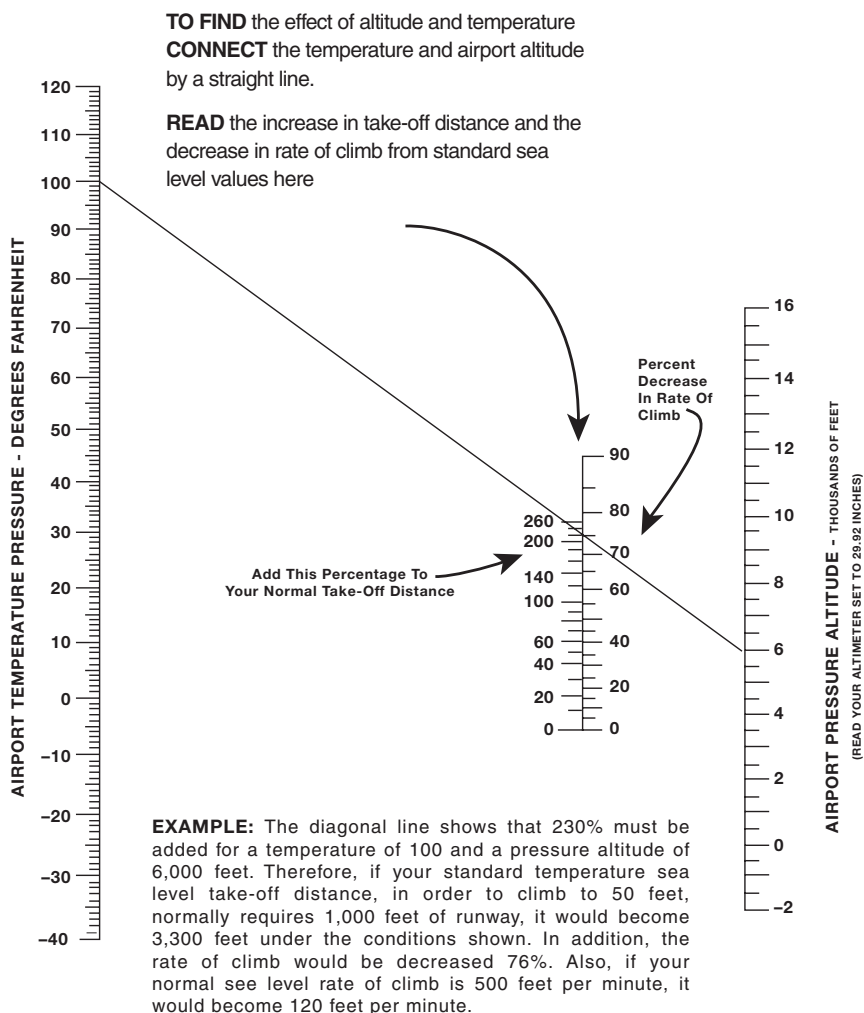
VFR TRANSPONDER CODES

Code 1200 – Surface to 18,000 Feet

Code 7600 – Radio Failure

Code 7700 – Emergency

MODIFIED KOCH CHART FOR ALTITUDE AND TEMPERATURE EFFECTS



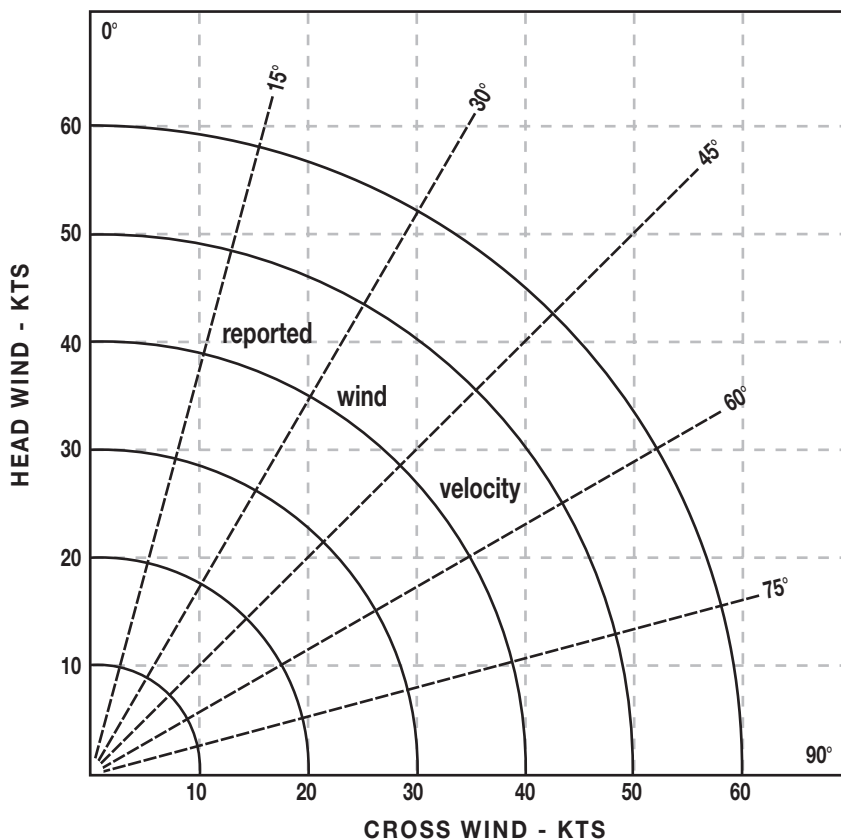
This chart indicates typical representative values for “personal” airplanes.

For exact values, consult your airplane flight manual.

The chart may be conservative for airplanes with supercharged engines.

Also, remember that long grass, sand, mud or deep snow can easily double your take-off distance.

WIND CHART FOR TAKEOFF



INSTRUCTIONS

1. Determine maximum 90° Cross Wind that you can handle.
(Suggest 20% X Stall Speed). Place dot on 90° line at this value.
2. Determine maximum 45° Cross Wind that you can handle.
(Suggest 30% X Stall Speed). Place dot on 45° line at this value.
3. Determine maximum Head Wind that you can handle.
(Suggest 60% X Stall Speed). Place dot on 0° line at this value.
4. Connect dots with red line. Values to left of line are go wind velocities and directions.

LOCATION & FREQ.	REMARKS
BISMARCK (BIS) ASOS Vortac/DME 116.5 ILS 31 110.3 ILS 13 111.5 RCO 122.2 Tower/CTAF 118.3 Ground 121.9 App/Dep Con 126.3 ATIS 119.35 Unicom 122.95 Center 135.25	(701) 255-7563 HIWAS Rwy 31 Rwy 13 GFK FSS Tower Open (1200-0600Z)
BOTTINEAU (D09) Center 127.6 Minot APP/Dep 119.6 Unicom/CTAF 122.8	MPLS Center
BOWMAN (BWW) AWOS-3 118.075 Center 132.425 RCO 122.4 Unicom/CTAF 122.8	(701) 523-3412 Salt Lake Center
CARRINGTON (46D) AWOS-3 118.575 Center 124.2 UNICOM/CTAF 122.9	701-652-1875 MPLS Center
CASSELTON (5N8) Center 127.35 Fargo APP/Dep 120.4 Vortac FAR 116.2 Unicom/CTAF 122.8	
CAVALIER (2C8) AWOS-3 118.275 Devils Lake RCO 122.3 Unicom/CTAF 122.8	701-265-8050 GFK Radio
COOPERSTOWN (S32) AWOS-3 118.750 Jamestown RCO 123.6 Unicom/CTAF 122.9	701-797-2566 GFK Radio
CROSBY (D50) AWOS-3 118.025 Center 126.85 Unicom/CTAF 122.9	701-965-6732 Salt Lake Center
DEVILS LAKE (DVL) AWOS-3 125.875 Vortac/DME 111.0 ILS 31 108.7 RCO 122.3 Unicom/CTAF 122.8	(701) 662-7214 Hiwas Rwy 31 GFK FSS

LOCATION & FREQ.	REMARKS
DICKINSON (DIK) ASOS 118.375 VOR DME 112.9 ILS 32 108.3 RCO 122.2 Center 124.25 Unicom/CTAF 123.0	(701) 227-0280 HIWAS Rwy 32 GFK FSS MPLS Center
FARGO (FAR) ASOS Vortac W 116.2 RCO 122.425 ILS 18 108.9 ILS 36 110.3 App/Dep Con 120.4 Center 127.35 Tower 133.8 Ground 121.9 ATIS 124.5 Unicom 122.95	(701) 298-3877 GFK FSS Rwy 18 Rwy 36
GARRISON (DO5) Center 127.6 Unicom/CTAF 122.9	MPLS Center
GLEN ULLIN (D57) AWOS 118.75 Center 124.25 RCO 122.45 Unicom/CTAF 122.9	(701) 348-9581
GRAFTON (GAF) AWOS-3 118.625 Center 132.15 GFK App/Dep 118.1 Unicom/CTAF 122.8	(701) 352-0581
GRAND FORKS (GFK) ASOS Vortac/DME 114.3 ILS 35L 109.1 LOC BC Rwy17R 109.1 RCO 122.2-122.6 App/Dep Con 118.1 Center 132.15 Tower/CTAF 118.4-120.55 Ground 124.575 ATIS 119.4 Unicom 122.95 Clearance 135.725	(701) 772-3486 HIWAS Rwy 35L Rwy 17R GFK FSS MPLS CTAF Tower Open (1200-0530)
GWINNER (GWR) AWOS 118.325 Center 127.35 Unicom/CTAF 122.7	(701) 678-6801 MPLS Center

LOCATION & FREQ.	REMARKS
HARVEY (5H4) AWOS-3 118.825 Center 135.25 Unicom/CTAF 122.8	(701) 324-2058 MPLS Center
HAZEN (HZE) AWOS-3 118.675 Center 124.25 RCO 122.45 Unicom/CTAF 122.8	(701) 748-2443 MPLS Center GFK FSS
HETTINGER (HEI) ASOS 119.925 Center 124.25 Unicom/CTAF 122.8	(701) 567-4594 MPLS Center
HILLSBORO (3H4) Center 127.35 Fargo App/DEP 120.4 Unicom/CTAF 122.9	
JAMESTOWN (JMS) ASOS 118.425 VOR/DME 114.5 ILS 31 109.3 RCO 123.6 Center 124.2 Unicom/CTAF 123.0	(701) 251-9002 HIWAS Rwy 31 GFK FSS MPLS Center
KENMARE (7K5) Center 127.6 Minot App/DEP 119.6 Unicom/CTAF 122.8	MPLS Center
MANDAN (Y19) AWOS-3 118.225 Bismarck App/DEP 126.3 Center 135.25 Unicom/CTAF 122.8 VOR/DME 116.5	(701) 663-0271 (1200-0600Z) MPLS Center (0600-1200Z) HIWAS
MINOT (MOT) ASOS 118.725 Vortac W 117.1 ILS 31 111.9 LOC BC Rwy 13 111.9 App/Dep Con 119.6 Tower/CTAF 118.2 Ground 121.9 RCO 122.2 Unicom 122.95 Center 127.6	(701) 837-9379 HIWAS Rwy 31 Rwy 13 Minot Air Base CTAF Tower open (1300-0400Z) GFK FSS MPLS Center

LOCATION & FREQ.	REMARKS
MOHALL (HBC) Minot App/DEP Con. 119.6 Center 127.6 Unicom/CTAF 122.8	
Northwood (4V4) Grand Forks App/DEP 118.1 Unicom/CTAF 122.8	
OAKES (2D5) AWOS-3 118.675 Center App/DEP 124.2 Unicom/CTAF 122.9	(701) 742-3991 MPLS Center
PEMBINA (PMB) VORTAC 112.4 FSS 122.1 R Center 132.15 Unicom/CTAF 122.8	MPLS Center
ROLLA (06D) AWOS-3 118.125 Center 127.6 RCO 122.65 Unicom/CTAF 122.8	(701) 447-0055 MPLS Center GFK FSS
RUGBY (RUG) AWOS-3 118.475 RCO 122.2 Unicom/CTAF 122.8	(701) 776-6100 GFK FSS
STANLEY (08D) AWOS-3 121.1 Center App/DEP 127.6 Unicom/CTAF 122.9	(701) 628-1737 MPLS Center
TIOGA (D60) AWOS-3 118.575 Center 127.6 Unicom/CTAF 122.9	(701) 664-4490 MPLS Center
VALLEY CITY (BAC) AWOS-3 118.725 Center App/DEP 124.2 Unicom/CTAF 122.8	(701) 845-9117 MPLS Center
WAHPETON (BWP) AWOS-3 127.875 Vortac 116.2 RCO 122.425 Unicom/CTAF 123.0	(701) 642-9800

LOCATION & FREQ.	REMARKS
WALHALLA (96D) Center App/DEP 132.15 Unicom/CTAF 122.9	MPLS Center
WATFORD CITY (S25) Center 126.85 Unicom/CTAF 122.8	Salt Lake Center
WILLISTON (ISN) ASOS 125.92 VORTAC 116.3 ILS 29 108.7 Center 126.85 RCO 123.6 Unicom/CTAF 122.8	(701) 774-3124 HIWAS Rwy 29 Salt Lake Center GFK FSS

Temporary Flight Restrictions

FAA NOTAMS 1-877-487-6867

<https://pilotweb.nas.faa.gov>

While TFR's may be triggered by different events, it is important that pilots familiarize themselves with each type of restriction, and how it may impact a pilot's proposed flight. Of equal importance, pilots must know how best to gain information concerning TFR's before each flight. Inadvertent flight into a TFR not only places a pilot's certificate at risk; it also increases the chances of being intercepted by military or law enforcement aircraft. Straying into TFR airspace may also increase the risk of a mid-air collision.

For further information on TFR's, you may visit FAA's website at <http://tfr.faa.gov> While flying in the vicinity of the Grand Forks Airport (KGFK), please familiarize yourself with the TFR located to the west of the airport.



AIR TRAFFIC CONTROLLER (ATCT)

Bismarck ATCT – 701-223-8790

Fargo ATCT– 701-239-5188

Grand Forks ATCT – 701-775-2898

Minot ATCT – 701-852-2346

ASOS or AWOS

CITY	ID.	FREQ.	PHONE
Beach	2OU	118.175	(701) 872-9225
Bismarck NWS	BIS	119.35*	(701) 255-7563 **(701) 223-4582
Bowman	BWW	118.075	(701) 523-3412
Cando	9D7	118.325	(701) 968-3625
Carrington	46D	118.575	(701) 652-1875
Cavalier	2C8	118.275	(701) 265-8050
Cooperstown	S32	118.750	(701) 797-2566
Crosby	D50	118.025	(701) 965-6732
Devils Lake	DVL	125.875	(701) 662-7214
Dickinson	DIK	118.375	(701) 227-0280
Fargo	FAR	124.50*	(701) 298-3877
Glen Ullin	D57	118.75	(701) 348-9581
Grafton	GAF	118.625	(701) 352-0581
Grand Forks NWS	GFK	119.40*	(701) 772-3486 **(701) 772-0720
Gwinner	GWR	118.325	(701) 678-6801
Harvey	5H4	118.825	(701) 324-2058
Hazen	HZE	118.675	(701) 748-2443
Hettinger	HEI	119.925	(701) 567-4594
Jamestown	JMS	118.425	(701) 251-9002
Langdon	D55	118.225	(701) 256-2121
Linton	7L2	118.175	(701) 254-4965
Mandan	Y19	118.225	(701) 663-0271
Minot	MOT	118.725	(701) 837-9379
Oakes	2D5	118.675	(701) 742-3991
Rolla	06D	118.125	(701) 477-0055
Rugby	RUG	118.475	(701) 776-6100
Stanley	08D	121.1	(701) 628-1737
Tioga	D60	118.575	(701) 664-4490
Valley City	BAC	118.725	(701) 845-9117
Wahpeton	BWP	127.875	(701) 642-9800
Walhalla	96D	118.175	(701) 549-3402
Watford City	S25	118.125	(701) 842-4855
Williston NWS	XWA	125.925	(701) 875-2118 **(701) 572-3198

*ATIS **NATIONAL WEATHER SERVICE (NWS)

AIRPORT IDENTIFIERS

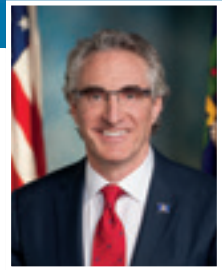
IDENT.	LOCATION	CTAF	IDENT.	LOCATION	CTAF
1A2	Arthur	122.9*	D55	Langdon	122.8*
ASY	Ashley	122.9*	2L1	Larimore	122.9
20U	Beach	122.8*	D31	Leeds	122.8*
95D	Beulah	122.9*	4N4	Lidgerwood	122.9
BIS	Bismarck	118.3* -TWR	7L2	Linton	122.9*
D09	Bottineau	122.8*	6L3	Lisbon	122.9
5B4	Bowbells	122.9	7G2	McClusky	122.9*
BWW	Bowman	122.8*	8M6	McVille	122.9
9D7	Cando	122.9*	6D3	Maddock	122.9
46D	Carrington	122.9*	Y19	Mandan	122.8*
5N8	Casselton	122.8*	D56	Mayville	122.8*
2C8	Cavalier	122.8*	4R6	Milnor	122.9
D49	Columbus	122.9	MOT	Minot	118.2* -TWR
S32	Cooperstown	122.9*	D06	Minto	122.9
D50	Crosby	122.9*	HBC	Mohall	122.8*
DVL	Devils Lake	122.8*	3P3	Mott	122.9*
DIK	Dickinson	123.0*	5B5	Napoleon	122.9*
D29	Drayton	122.9*	8J7	New Rockford	122.9
S28	Dunseith	122.8	05D	New Town	122.9*
51D	Edgeley	122.8*	4V4	Northwood	122.8*
Y71	Elgin	122.9*	2D5	Oakes	122.9*
4E7	Ellendale	122.9*	64G	Page Regional	122.9
5N4	Enderlin	122.9*	Y37	Park River	122.8*
FAR	Fargo	133.8 - TWR	Y74	Parshall	122.8*
D24	Fessenden	122.9*	PMB	Pembina	122.8*
Y27	Fort Yates	122.9	Y99	Plaza	122.9
9G9	Gackle	122.9	4E8	Richardton	122.9
D05	Garrison	122.9*	37N	Riverdale	122.9
D57	Glen Ullin	122.9*	2H9	Rolette	122.8*
GAF	Grafton	122.8*	06D	Rolla	122.8*
GFK	Grand Forks	118.4* -TWR	RUG	Rugby	122.8*
GWR	Gwinner	122.7*	4S5	St. Thomas	122.9*
5H4	Harvey	122.8*	08D	Stanley	122.9*
6H8	Hazelton	122.9	D60	Tioga	122.9*
HZE	Hazen	122.8*	D61	Towner	122.8*
HEI	Hettinger	122.8*	91N	Turtle Lake	122.8*
3H4	Hillsboro	122.9*	BAC	Valley City	122.8*
JMS	Jamestown	123.0*	BWP	Wahpeton	123.0*
7K5	Kenmare	122.8*	96D	Walhalla	122.9*
9Y1	Killdeer	122.9*	5C8	Washburn	122.9*
K74	Kindred	122.9*	S25	Watford City	122.8*
D03	Kulm	122.9	D54	West Fargo	122.7*
5L0	Lakota	122.9*	D64	Westhope	122.9*
4F9	LaMoure	122.9*	XWA	Williston	122.8*
			6L5	Wishek	122.9*

* - Aircraft Radio Controlled Airport Lighting Activation and/or increase intensity level through 3, 5, or 7 microphone clics.



—State of—
North Dakota
Office of the Governor

Doug Burgum
Governor



Welcome to the Legendary Skies of North Dakota!

As you plan your business or vacation flight, we invite you to take a scenic journey through our state. Discover the stunning beauty of our diverse landscape and the abundant recreational opportunities that make North Dakota an exceptional destination to include on your flight plan. Our state offers many great adventures, breathtaking natural wonders and exciting events for residents and visitors alike.

North Dakota's aviation industry enjoys a well-earned reputation as a world leader in cutting-edge technology and research. The John D. Odegard School of Aerospace Sciences at the University of North Dakota in Grand Forks operates the largest civilian training fleet in the world. The Northern Plains Unmanned Aerial Systems (UAS) Test Site continues to lead the country in UAS research and development as we work toward a solution to integrating UAS into the national airspace system.

As North Dakota continues efforts to strengthen its position as an aerospace industry leader, our state remains committed to fostering an innovative and nurturing environment where the spirit of entrepreneurial ideas can take flight.

I hope you enjoy your time here and create lasting memories as you experience all that North Dakota has to offer.

Sincerely,

Doug Burgum
Governor



Commissioners

Warren Pietsch, Chair, Minot
Kyle Humann, Vice Chair, Bismarck
Dr. Kim Kenville, Grand Forks
Jay B. Lindquist, Hettinger
Cindy Schreiber-Beck, Wahpeton

Mission

To serve the public by providing economic and technical assistance for the aviation community while ensuring the safe and cost-effective advancement of aviation in North Dakota.