

NORTH Dakota

AIRPORT DIRECTORY

2019-2020



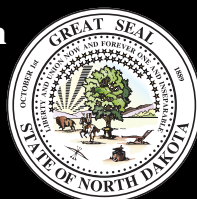
North Dakota Aeronautics Commission

PO Box 5020 • Bismarck, ND 58502

701.328.9650

ndaero@nd.gov

www.aero.nd.gov





-  Commercial Airport (8)
(Primary and Non-Primary)
-  General Aviation Airport (81)
-  Major City
-  County Boundary

NDSASP System Airports

PUBLIC AIRPORTS IN NORTH DAKOTA



Greetings and welcome to the skies of North Dakota!

The North Dakota Aeronautics Commission is committed to providing the public with a safe and efficient air transportation system. North Dakota’s 89 public-use airports are conveniently located throughout the state and support a full range of business, commercial, and recreational activities. An economic impact study undertaken by our agency in 2015, has shown that our public-use airports have an estimated annual economic impact of \$1.6 billion dollars on the state’s overall economy while providing support for over 12,200 jobs.

The numbers clearly show that our public airports are valuable assets to our communities, but they do so much more than what the numbers and statistics can reveal. Our airports are providing many opportunities for current and future generations to discover their passion for the field of aviation. Public access to the skies has enabled all of us with the ability to participate in endless possibilities and lifetime experiences.

I also want to encourage you to also take a tour of our website which can be found at <https://aero.nd.gov>. Our office works hard to ensure that this website is a one-stop shop for all of your North Dakota aviation needs.

As you travel throughout the state for business or pleasure, I sincerely hope that you will enjoy the time that you spend with us.

Wishing you smooth flying,

Kyle C. Wanner

Kyle C. Wanner
Executive Director

COPIES OF THIS DIRECTORY ARE AVAILABLE BY WRITING OR CALLING:



North Dakota Aeronautics Commission

P.O. Box 5020

Bismarck, North Dakota 58502-5020

TEL: (701) 328-9650

FAX: (701) 328-9656

E-mail: ndaero@nd.gov

Visit our website: <http://aero.nd.gov>



AMENITIES LISTED FOR EACH AIRPORT



Directory Disclaimer

Aeronautical information on this airport directory is up to date through Fall of 2018, and is obtained from the Federal Aviation Administration Chart Supplement and the North Dakota Aeronautics Commission. Printer, publisher, and the North Dakota Aeronautics Commission make no warranty, express or implied, as to accuracy of information expressly disclaim liability for the accuracy thereof. We recommend that you check Airman’s Information Manual, Chart Supplement, NOTAMS, and the Safety Bulletins from the Federal Aviation Administration for supplemental data and current information.

FLY North Dakota AIRPORTS!

North Dakota's passport program rewards pilots who fly to North Dakota's publically-owned airports, attend FAA safety seminars, and visit North Dakota's aviation museums. Fly North Dakota airports promotes safety and education, and encourages pilots to

practice approaches and landings in many different environments. It's also a great way to support general aviation airports, businesses, and tourism. Just visit one of the places or events listed in our passports, and have your passport stamped in the appropriate box. It's as easy as that!



HOW TO PARTICIPATE.

Get a Fly North Dakota Airports Passport at your local publically-owned airport or by contacting the North Dakota Aeronautics Commission.

Fill in the page at the front of your passport with your name and contact information. Each time you visit a North Dakota publically-owned airport, aviation museum, or participating FAA safety seminar, have your passport stamped in the appropriate box. The location of the airport stamp is stated in the passport.



When you have earned the proper number of stamps, submit your passport (they will be returned) to the North Dakota Aeronautics Commission, P.O. Box 5020, Bismarck, ND 58502. Phone: (701) 328-9650. Email: ndaero@nd.gov

Visit a community event or attraction by searching NDtourism.com

or call 1-800-HELLO-ND on your legacy flight! Each airport box in the Passport has an attraction listed.



North Dakota Airport Association



ARTHUR 1A2

ARTHUR AIRPORT

ATTENDANCE: UNATTENDED

FUEL: NONE

REPAIRS: NONE

LIGHTS: NONE

SNOW REMOVAL: CLOSED WINTER MOS.

CTAF: 122.9

WX: 118.725

BARNES
COUNTY



FIELD ELEVATION	REMARKS	IN-PERSON CONTACT
973	Road south of runway 35, irregular mowing	Rick Burgum PHONE: 701-371-0540 Addl: 701-967-8364 PUBLIC TERMINAL PHONE: None



ASHLEY ASY

ASHLEY MUNICIPAL

ATTENDANCE: UNATTENDED
 FUEL: 100LL, JET A REPAIRS: NONE

Pilot Controlled Lights: CTAF
 SNOW REMOVAL: Call After Storm

CTAF: 122.9 WX: 118.175 LINTON



FIELD ELEVATION	REMARKS	IN-PERSON CONTACT
<p style="text-align: center; font-size: 2em;">2032</p>	<p>Call ahead for fuel</p>	<p>Ladelle George PHONE: 701-371-8707 Addl: 701-288-3194 PUBLIC TERMINAL PHONE: Yes</p>

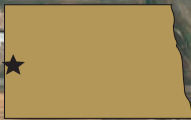


BEACH 20U BEACH AIRPORT

ATTENDANCE: UNATTENDED
FUEL: 100LL, JET A REPAIRS: NONE

Pilot Controlled Lights: CTAF
SNOW REMOVAL: Confirm after storm
Instrument Approach: Non-Precision

CTAF: 122.8 WX: 118.175



FIELD ELEVATION	REMARKS	IN-PERSON CONTACT
2756	Attended: May - Sept. 10am - 7pm AWOS Phone: 701-872-9225	Donnel Michels PHONE: 701-872-6704 PUBLIC TERMINAL PHONE: Yes



BEULAH 95D

BEULAH MUNICIPAL

ATTENDANCE: UNATTENDED / ON CALL

FUEL: 100LL JETA REPAIRS: MAJOR

Pilot Controlled Lights: CTAF

SNOW REMOVAL: Confirm after storm

CTAF: 122.9

WX: 118.675

HAZEN



FIELD ELEVATION	REMARKS	IN-PERSON CONTACT
1791	Unlighted Stacks 600' Agl-6 miles N. Lighted Stack 498' Agl-1.8 nm south. Code for terminal: 1229. Courtesy car inside shop. Call: 701-873-4100 for fuel	Shawn Morten PHONE: 701-873-4100 Addl: 701-873-2259 PUBLIC TERMINAL PHONE: Yes



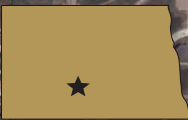
BISMARCK BIS

BISMARCK MUNICIPAL

ATTENDANCE: 24 HOUR SERVICE
 FUEL: 100LL JET A REPAIRS: MAJOR

LIGHTS: CTAF when tower closes
 SNOW REMOVAL: Regular Service
 INSTRUMENT APPROACH: Precision

GROUND: 121.9 UNICOM: 122.95
 TOWER/CTAF: 118.3 WX: 119.35 ATIS



FIELD ELEVATION	REMARKS	IN-PERSON CONTACT
<p style="font-size: 2em; font-weight: bold;">1661</p>	<p>AWOS Phone: 701-255-7563.</p>	<p>Greg Haug/Tim Thorsen PHONE: 701-355-1808 PUBLIC TERMINAL PHONE: Yes</p>



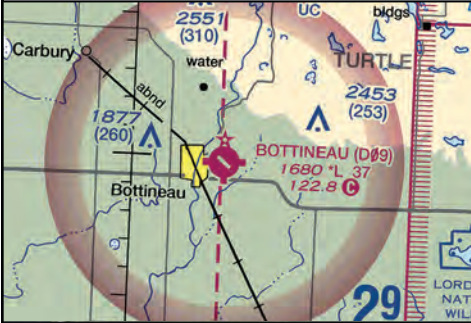
BOTTINEAU D09

BOTTINEAU MUNICIPAL

ATTENDANCE: ON CALL
 FUEL: 100LL-Call Ahead REPAIRS: NONE

Pilot Controlled Lights: CTAF
 SNOW REMOVAL: Confirm after storm
 Instrument Approach: Non-Precision

CTAF: 122.8 WX: 118.125 ROLLA



FIELD ELEVATION	REMARKS	IN-PERSON CONTACT
1680	3/21 Closed Winter Months	Leo Jostad / Chuck Refling PHONE: 701-871-2096 Addl: 701-228-2236 PUBLIC TERMINAL PHONE: Yes



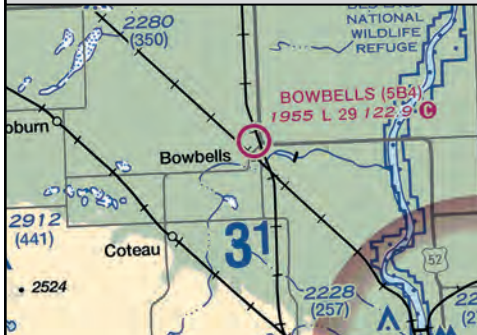
BOWBELLS 5B4

BOWBELLS MUNICIPAL

ATTENDANCE: UNATTENDED
FUEL: NONE REPAIRS: NONE

LIGHTS: NONE
SNOW REMOVAL: Call after storm

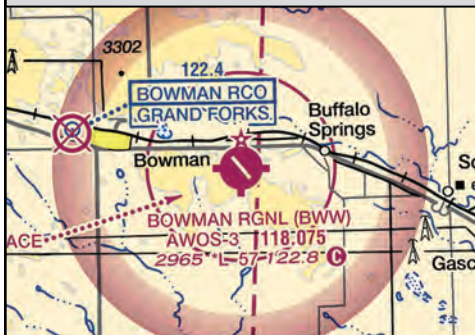
CTAF: 122.9 WX: 118.575 TIOGA



FIELD ELEVATION	REMARKS	IN-PERSON CONTACT
<p>1955</p>	<p>Standing water after rain. Confirm runway condition prior to use.</p>	<p>Wayne Jacobson PHONE: 701-377-2731/339-1574 Addl: 701-377-2608</p>



MX hanger can be used for storage with prior notifications



BOWMAN BWW

BOWMAN REGIONAL

ATTENDANCE: M-F 8 AM - 5 PM
 FUEL: 100LL JETA - Self Service Credit Card
 REPAIRS: MAJOR

Pilot Controlled Lights: CTAF
 SNOW REMOVAL: Confirm after storm
 Instrument Approach: Non-Precision

CTAF: 122.8 WX: 118.075



FIELD ELEVATION	REMARKS	IN-PERSON CONTACT
<p style="text-align: center; font-size: 2em;">2965</p>	<p>AWOS: 701-523-3412</p>	<p>Brent Kline PHONE: 701-523-7484, 701-440-7449 Email: fuel@bottomlineaviation.com PUBLIC TERMINAL PHONE: YES</p>



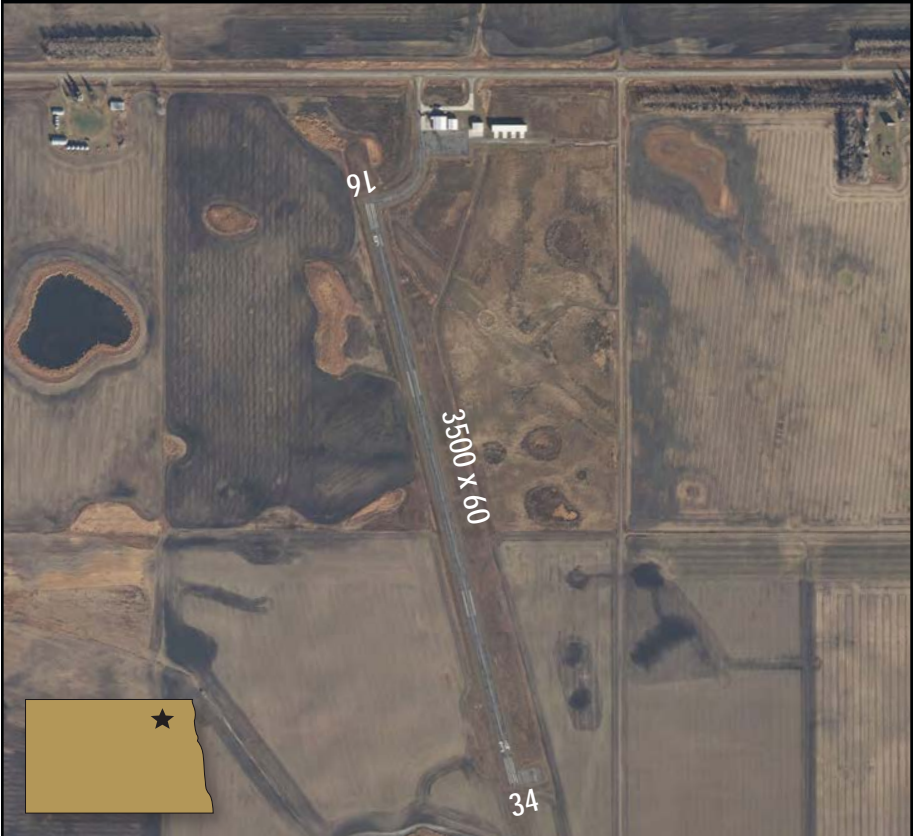
CANDO 9D7

CANDO MUNICIPAL

ATTENDANCE: UNATTENDED
FUEL: NONE REPAIRS: NONE

Pilot Controlled Lights: CTAF
SNOW REMOVAL: Confirm after storm
Instrument Approach: non-precision

CTAF: 122.9 WX: 118.325



FIELD ELEVATION	REMARKS	IN-PERSON CONTACT
<p style="font-size: 2em; font-weight: bold;">1482</p>	<p>AWOS: 701-968-3625. Contact airport manager for vehicle access.</p>	<p>Rollie Bjornstad PHONE: 701-739-8026 / 968-3043 PUBLIC TERMINAL PHONE: NONE</p>



CARRINGTON 46D

CARRINGTON MUNICIPAL

ATTENDANCE: UNATTENDED

FUEL: 100LL - 24 Hr. Self-serve credit card

REPAIRS: NONE

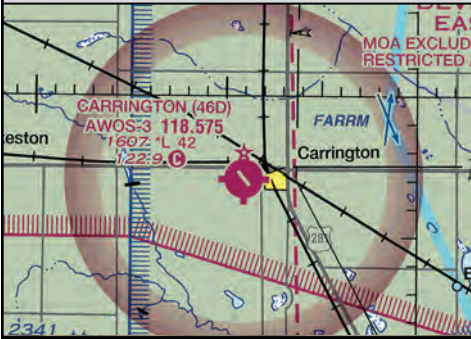
Pilot Controlled Lights: CTAF

SNOW REMOVAL: Confirm after storm

Instrument Approach: non-precision

CTAF: 122.9

WX: 118.575



FIELD ELEVATION	REMARKS	IN-PERSON CONTACT
<p>1607</p>	<p>AWOS: 701-652-1875 Confirm snow removal: 701-652-5206</p>	<p>Mitch Otten PHONE: 701-652-2911 / 652-5206 PUBLIC TERMINAL PHONE: Yes</p>



CASSETON 5N8

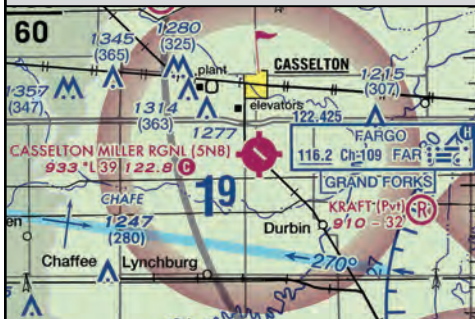
ROBERT MILLER REGIONAL

ATTENDANCE: MON-FRI 8AM-5PM

FUEL: 100LL REPAIRS: MAJOR

Pilot Controlled Lights: CTAF
 SNOW REMOVAL: Confirm after storm
 Instrument Approach: Non-Precision

CTAF: 122.8 WX: 124.5 FARGO



FIELD ELEVATION	REMARKS	IN-PERSON CONTACT
<p style="font-size: 2em; font-weight: bold;">933</p>	<p>Confirm winter conditions: 701-347-4680. www.Casselton.com/community/airport</p>	<p>Robert Miller PHONE: 701-347-0201 ADDL. PHONE: 701-347-5519 PUBLIC TERMINAL PHONE: Yes</p>



CAVALIER 2C8

CAVALIER MUNICIPAL

ATTENDANCE: ON CALL

FUEL: 100LL, JETA REPAIRS: MAJOR

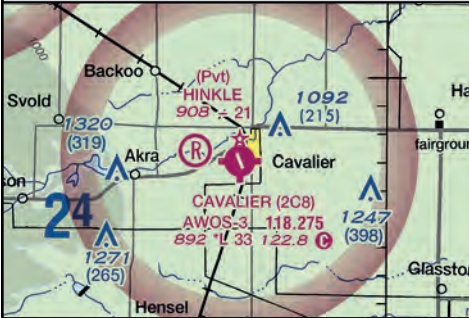
Pilot Controlled Lights: CTAF

SNOW REMOVAL: Confirm after storm

Instrument Approach: Non-Precision

CTAF: 122.8

WX: 118.275

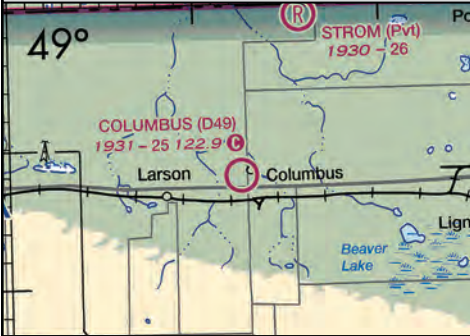


FIELD ELEVATION	REMARKS	IN-PERSON CONTACT
892	AWOIS: 701-265-8050. Ry 34 - 31' powerline 1300' from threshold. Elevator SE of centerline.	Harrold McConnell PHONE: 701-520-3186 ADDL. PHONE: 701-520-5066 PUBLIC TERMINAL PHONE: Yes



COLUMBUS D49

COLUMBUS MUNICIPAL



ATTENDANCE: UNATTENDED

FUEL: NONE

REPAIRS: NONE

LIGHTS: Reflectors

SNOW REMOVAL: Closed winter months

CTAF: 122.9

WX: 118.025

CROSBY



FIELD ELEVATION

REMARKS

IN-PERSON CONTACT

1931

Closed winter months.
Call for grass mowing.

Rich Castell - Manager
PHONE: 701-339-0355
ADDL. PHONE: 701-939-7831
PUBLIC TERMINAL PHONE: No



COOPERSTOWN S32

COOPERSTOWN MUNICIPAL

ATTENDANCE: On Call
 FUEL: 100LL - Self-service credit card
 REPAIRS: NONE

Pilot Controlled Lights: CTAF
 SNOW REMOVAL: Confirm after storm
 Instrument Approach: non-Precision

CTAF: 122.9 WX: 118.75



FIELD ELEVATION	REMARKS	IN-PERSON CONTACT
1424	Fuel-self service credit card. AWOS: 701-797-2566 May-Sept. M-F 8am-5pm Oct.-April On Call	John Wakefield PHONE: 701-789-0666 ADDL. PHONE: 701-789-0667 PUBLIC TERMINAL PHONE: Yes



CROSBY D50

CROSBY MUNICIPAL

ATTENDANCE: UNATTENDED

FUEL: 100LL - Self Service Credit Card

REPAIRS: NONE

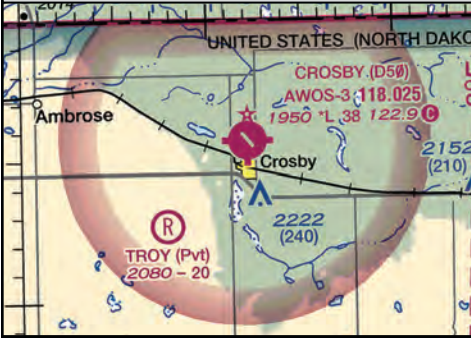
Pilot Controlled Lights: CTAF

SNOW REMOVAL: Confirm after storm

Instrument Approach: Non-Precision

CTAF: 122.9

WX: 118.025



FIELD ELEVATION	REMARKS	IN-PERSON CONTACT
1950	Runway 3-21 closed winter mos. AWOS: 701-965-6732 Traffic Pattern: 2750.	Mike Melby -Chairman PHONE: 701-570-0944 ADDL. PHONE: 701-965-6512 PUBLIC TERMINAL PHONE: Yes



DEVILS LAKE DVL

DEVILS LAKE REGIONAL



ATTENDANCE: DAYTIME HOURS

FUEL: JETA, 100LL REPAIRS: MAJOR

Pilot Controlled Lights: CTAF

SNOW REMOVAL: Confirm after storm

Instrument approach: Precision

CTAF: 122.8

WX: 125.875



FIELD ELEVATION

REMARKS

IN-PERSON CONTACT

1470

M-F 8am - 5pm
AWOS: 701-662-7214

John Nord
PHONE: 701-662-5833
ADDI. PHONE: 701-662-3221 FBO
PUBLIC TERMINAL PHONE: Yes



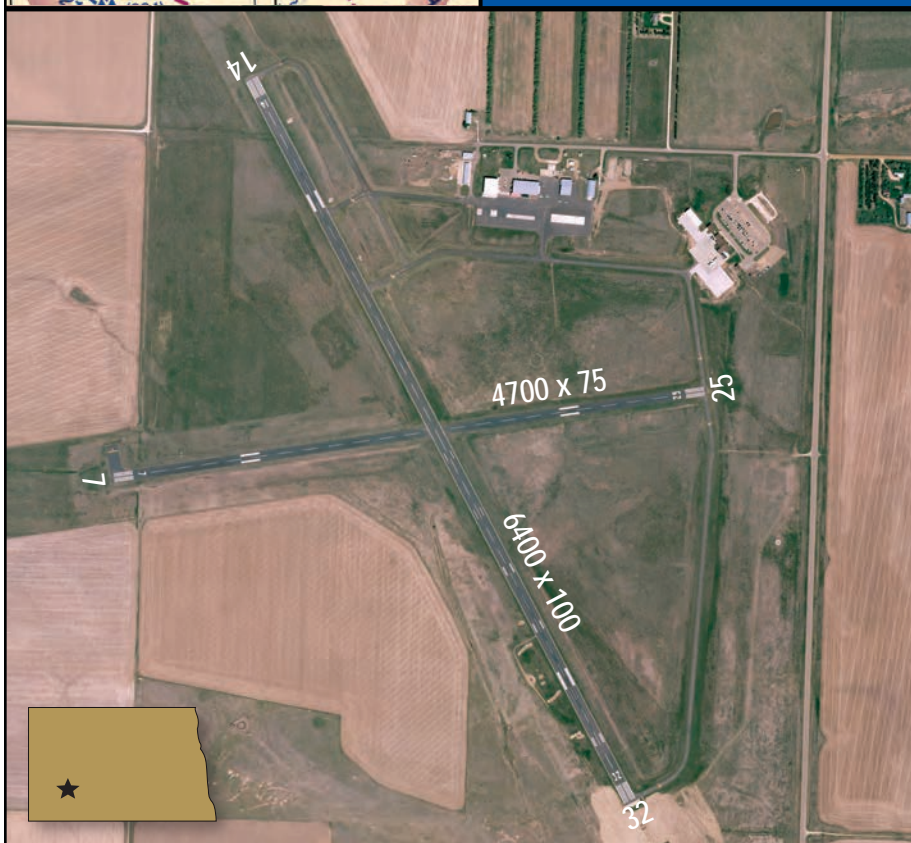
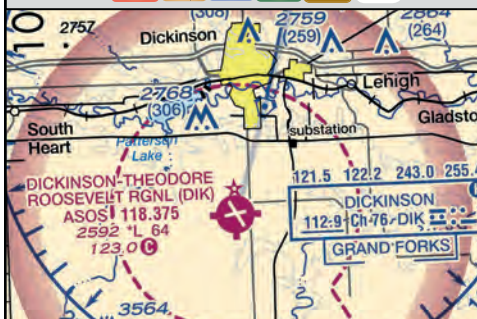
DICKINSON DIK

DICKINSON THEODORE ROOSEVELT REGIONAL

ATTENDANCE: M-F 8-5PM MST
 FUEL: 100LL, JET A - Self-serve after 2200
 REPAIRS: MAJOR

Pilot Controlled Lights: CTAF
 SNOW REMOVAL: Regular
 Instrument Approach: Precision

CTAF: 123.00 WX: 118.375



FIELD ELEVATION	REMARKS	IN-PERSON CONTACT
2592	On Call After Hrs: 701-264-9466 AWOS: 701-227-0280	Kelly Braun PHONE: 701-483-1062 ADDL. PHONE: 701-483-4221 PUBLIC TERMINAL PHONE: Yes



DRAYTON D29

DRAYTON MUNICIPAL

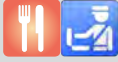
ATTENDANCE: UNATTENDED
 FUEL: NONE REPAIRS: NONE

Pilot Controlled Lights: CTAF
 SNOW REMOVAL: Confirm after storm

CTAF: 122.9 WX: 126.475 HALLOCK



FIELD ELEVATION	REMARKS	IN-PERSON CONTACT
798	For service call: 701-454-6588 Confirm snow removal: 701-454-3590 Road south of runway 35	Rob Boll PHONE: 701-454-3317 ADDL PHONE: 701-454-3590 PUBLIC TERMINAL PHONE: None



DUNSEITH S28

INTERNATIONAL PEACE GARDEN

ATTENDANCE: UNATTENDED

FUEL: NONE

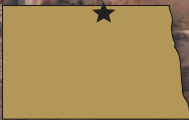
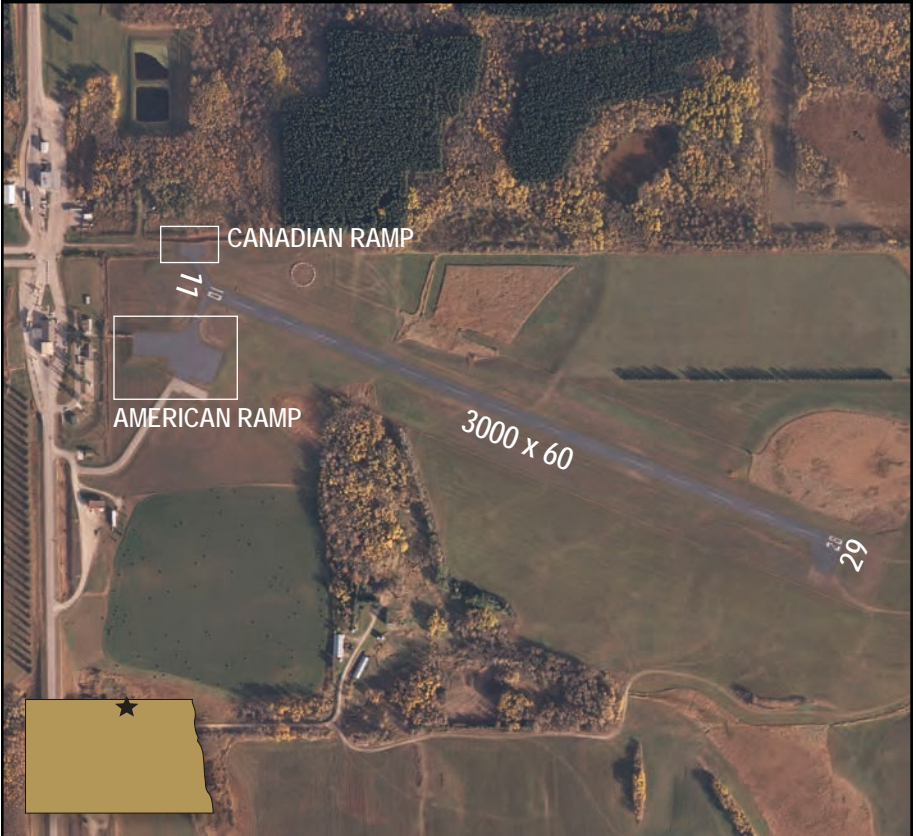
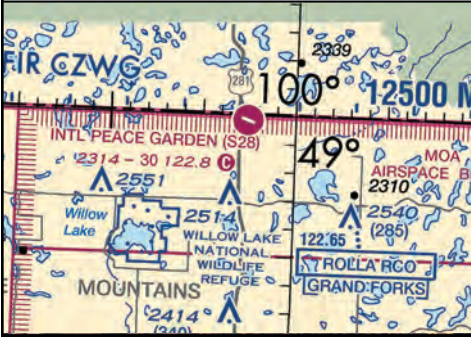
REPAIRS: NONE

SNOW REMOVAL: REGULAR

CTAF: 122.8

WX: 118.125

ROLLA



FIELD ELEVATION	REMARKS	IN-PERSON CONTACT
2316	Unattended US Customs: 701-263-4513 Canadian Customs: 204-534-6820	Kyle Wanner PHONE 701-328-9650 ADDL. PHONE: 701-425-5926 PUBLIC TERMINAL PHONE: None



EDGELEY 51D

EDGELEY MUNICIPAL

ATTENDANCE: UNATTENDED
 FUEL: 100LL - Self Service Credit Card
 REPAIRS: NONE

Pilot Controlled Lights: CTAF
 SNOW REMOVAL: Confirm after storm
 Instrument Approach: non-precision

CTAF: 122.8 WX: 118.675 OAKES



FIELD ELEVATION	REMARKS	IN-PERSON CONTACT
1603	Confirm snow removal before use. Heated Hanger available for transient aircraft.	Dave Lux PHONE: 701-320-8740 ADDL PHONE: 701-493-2927 PUBLIC TERMINAL PHONE: Yes

Transportation can be arranged.
Call prior to arrival.



ELGIN Y71

ELGIN MUNICIPAL

ATTENDANCE: UNATTENDED

FUEL: NONE REPAIRS: NONE

LIGHTS: NONE

SNOW REMOVAL: On request only

CTAF: 122.9 WX: 118.75 GLEN ULLIN



FIELD ELEVATION	REMARKS	IN-PERSON CONTACT
2355	Snow removal on request only. Runway surface rough. Runway 30 - 10' dropoff 100' from threshold. No line of sight between runway ends.	PHONE: 701-220-3442 701-584-9012 PUBLIC TERMINAL PHONE: None



ELLENDALE 4E7

ELLENDALE MUNICIPAL



ATTENDANCE: UNATTENDED

FUEL: NONE

REPAIRS: NONE

Pilot Controlled Lights: CTAF

SNOW REMOVAL: Confirm after storm

Instrument Approach: Non-Precision

CTAF: 122.9

WX: 118.675

OAKES



FIELD ELEVATION

REMARKS

IN-PERSON CONTACT

1457

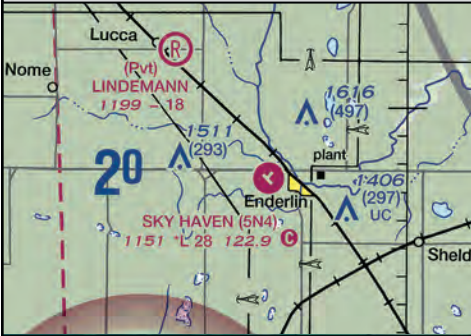
Ry 17/35 closed winter months,
Power lines N. of Airport.

Tom Ulmer
PHONE: 701-710-0105
City of Ellendale: 701-349-3252
PUBLIC TERMINAL PHONE: Yes



ENDERLIN 5N4

SKY HAVEN



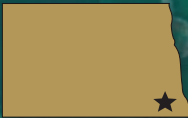
ATTENDANCE: UNATTENDED

FUEL: 100LL REPAIRS: NONE

Pilot Controlled Lights: CTAF

SNOW REMOVAL: Confirm after storm

CTAF: 122.9 WX: 118.325 GWINNER

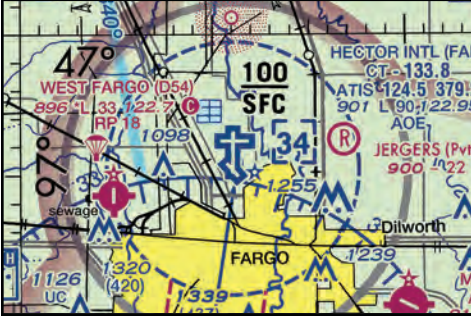


FIELD ELEVATION	REMARKS	IN-PERSON CONTACT
<h2>1151</h2>	<p>Traffic Pattern: 1800 Electric hookups available for winter ops</p>	<p>Bobby Geske PHONE 701-799-6082 ADDL PHONE: 701-437-3437 PUBLIC TERMINAL PHONE: Yes</p>



FARGO FAR

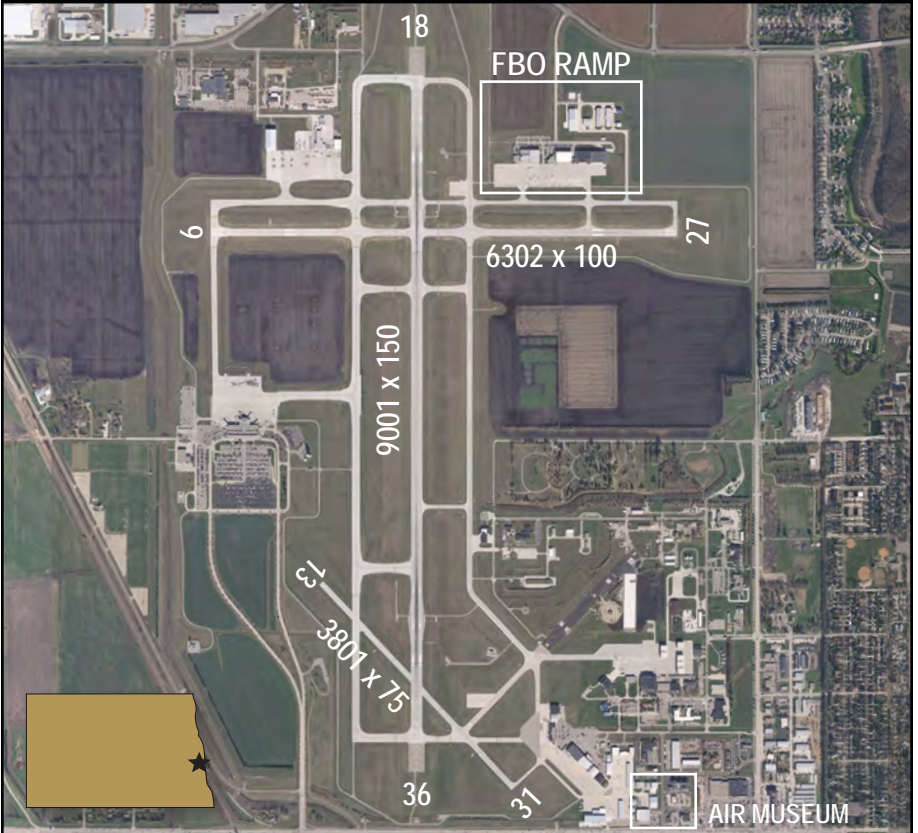
HECTOR INTERNATIONAL



ATTENDANCE: ATTENDED ALL HOURS
 FUEL: JET A, 100LL, J8 REPAIRS: MAJOR

LIGHTS: Tower Controlled
 SNOW REMOVAL: Regularly Scheduled
 Pilot Controlled Lights: CTAF

TWR: 133.8 GRND: 121.9 ATIS - 124.5



FIELD ELEVATION	REMARKS	IN-PERSON CONTACT
901	AWOS 701-298-3877 Traffic Pattern: 1800 MSL US Customs port of entry, Fargo Air Museum SE corner of airport.	Shawn Dobberstein PHONE: 701-241-1501 PUBLIC TERMINAL PHONE: Yes



FESSENDEN D24

FESSENDEN-STREIBEL MUNICIPAL

ATTENDANCE: UNATTENDED

FUEL: NONE

REPAIRS: NONE

Pilot Controlled Lights: CTAF

SNOW REMOVAL: NONE

CTAF: 122.9

WX: 118.825 HARVEY



FIELD ELEVATION

REMARKS

IN-PERSON CONTACT

1619

Daylight cone markers.
Road east of airport

Mark Nelson
PHONE 701-653-5069
PUBLIC TERMINAL PHONE: None



FORT YATES Y27

STANDING ROCK

ATTENDANCE: UNATTENDED

FUEL: NONE

REPAIRS: NONE

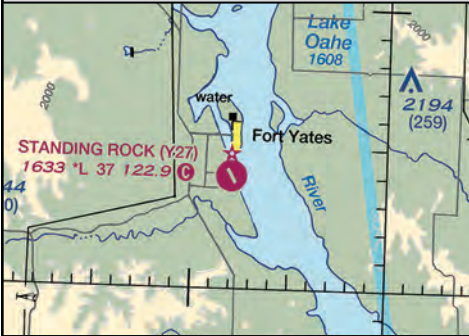
Pilot Controlled Lights: CTAF

SNOW REMOVAL: Confirm after storm

CTAF: 122.9

WX: 118.175

LINTON



FIELD ELEVATION	REMARKS	IN-PERSON CONTACT
<p style="text-align: center; font-size: 2em; font-weight: bold;">1633</p>		<p>PHONE: 701-854-8611 ADDL PHONE: 701-854-8500 ext 7002 PUBLIC TERMINAL PHONE: None</p>



GACKLE 9G9

GACKLE MUNICIPAL

ATTENDANCE: UNATTENDED

FUEL: NONE

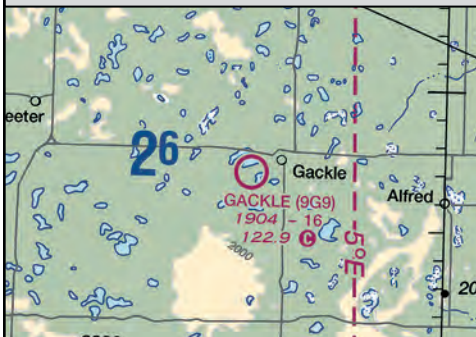
REPAIRS: NONE

LIGHTS: NONE

SNOW REMOVAL: NONE - call prior

CTAF: 122.9

WX: 118.425 JAMESTOWN



FIELD ELEVATION	REMARKS	IN-PERSON CONTACT
<p>1904</p>	<p>Check notams.</p>	<p>Public works PHONE 701-320-3655 ADDL PHONE: 701-485-3331 PUBLIC TERMINAL PHONE: None</p>



GARRISON D05

GARRISON MUNICIPAL

ATTENDANCE: UNATTENDED

FUEL: 100LL - Self Service Credit Card

REPAIRS: NONE

Pilot Controlled Lights: CTAF

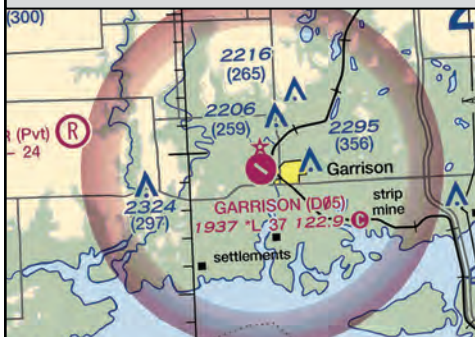
SNOW REMOVAL: Confirm after storm

Instrument Approach: Non-Precision

CTAF: 122.9

WX: 118.675

HAZEN



FIELD ELEVATION	REMARKS	IN-PERSON CONTACT
<p style="text-align: center; font-size: 2em;">1936</p>	<p>RY 3/21 closed in winter.</p>	<p>Jim Wilcox- Chairman PHONE: 701-301-1055 ADDL PHONE: 701-463-2600 City PUBLIC TERMINAL PHONE: Yes</p>



GLEN ULLIN D57

GLEN ULLIN REGIONAL



ATTENDANCE: UNATTENDED
 FUEL: 100LL - Self-service credit card
 REPAIRS: NONE
 Pilot Controlled Lights: CTAF
 SNOW REMOVAL: Confirm after storm
 Instrument Approach: non-Precision

CTAF: 122.9 WX: 118.75



FIELD ELEVATION	REMARKS	IN-PERSON CONTACT
<p style="text-align: center; font-size: 2em;">2091</p>	<p>AWOS: 701-348-9581 Hangar space available, call ahead.</p>	<p>Gene Glasser PHONE 701-226-1147 ADDL PHONE: 701-226-7994 PUBLIC TERMINAL PHONE: Yes</p>



GRAFTON GAF

GRAFTON HUTSON FIELD

ATTENDANCE: M-F 8am - 5pm
 FUEL: JET A, 100LL REPAIRS: MINOR

Pilot Controlled Lights: CTAF
 SNOW REMOVAL: Confirm after storm
 Instrument Approach: Non-Precision

CTAF: 122.8 WX: 118.625



FIELD ELEVATION	REMARKS	IN-PERSON CONTACT
824	AWOS: 701-352-0581 Runway 8/26 soft when wet Heavy aerial spray activity Rwy 8/26 closed winter months	Andrew Tibert PHONE: 701-352-0271 ADDL PHONE: 701-520-9174 PUBLIC TERMINAL PHONE: Yes



GRAND FORKS GFK

GRAND FORKS INTERNATIONAL

ATTENDANCE: ALL HOURS
FUEL: 100LL, JET A REPAIRS: MAJOR

Pilot Controlled Lights: CTAF when tower closed
SNOW REMOVAL: Regular
Instrument Approach: Precision

Tower: 118.4 Ground: 124.575
ATIS: 119.4 UNICOM: 122.95



FIELD ELEVATION	REMARKS	IN-PERSON CONTACT
844	AWOS: 701-722-3486 US Customs: 701-772-3301 TFR West of Airport Heavy Student Traffic	Ryan Riesinger PHONE: 701-795-6981 FBO PHONE: 701-772-5504 PUBLIC TERMINAL PHONE: Yes



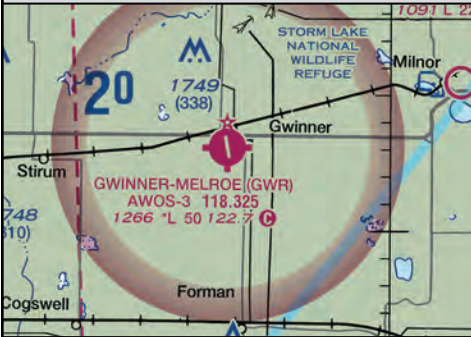
GWINNER GWR

GWINNER-ROGER MELROE FIELD

ATTENDANCE: UNATTENDED
FUEL: 100LL, JET A REPAIRS: NONE

Pilot Controlled Lights: CTAF
SNOW REMOVAL: Confirm after storm
Instrument Approach: non-Precision

CTAF: 122.7 WX: 118.325



FIELD ELEVATION	REMARKS	IN-PERSON CONTACT
1265	AWOS: 701-678-6801 Ry 6/24 closed winter months	Rick Hoistad PHONE: 701-680-8000 ADDL PHONE: 701-678-2639 PUBLIC TERMINAL PHONE: Yes



HAZELTON 6H8

HAZELTON MUNICIPAL

ATTENDANCE: UNATTENDED

FUEL: NONE

REPAIRS: NONE

LIGHTS: NONE

SNOW REMOVAL: None

CTAF: 122.9

WX: 118.175

LINTON



FIELD ELEVATION

REMARKS

IN-PERSON CONTACT

2015

Turf clumpy.
Tiedowns at west apron

Mike Appert
PHONE: 701-782-6269
PHONE: 701-220-6816
PUBLIC TERMINAL PHONE: None



HAZEN HZE

MERCER COUNTY REGIONAL

ATTENDANCE: UNATTENDED
 FUEL: 100LL JETA - Self Service Credit Card
 REPAIRS: MINOR

Pilot Controlled Lights: CTAF
 SNOW REMOVAL: Confirm after storm
 Instrument Approach: non-Precision

CTAF: 122.8 WX: 118.675



FIELD ELEVATION	REMARKS	IN-PERSON CONTACT
<p style="text-align: center; font-size: 2em;">1814</p>	<p>AWOS: 701-748-2443. Fuel- self-service credit card. Call ahead for hangar</p>	<p>Steve Frovarp PHONE 701-880-0042 ADDL PHONE: 701-748-2550 PUBLIC TERMINAL PHONE: Yes</p>



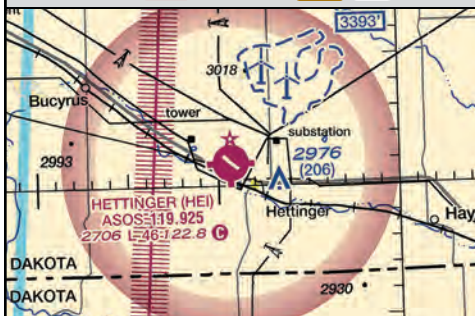
HETTINGER HEI

HETTINGER MUNICIPAL

ATTENDANCE: M-F 8am - 5pm
 FUEL: 100ll, JET A - Self Service Credit Card
 REPAIRS: MAJOR

Pilot Controlled Lights: CTAF
 SNOW REMOVAL: Confirm after storm
 Instrument Approach: non-Precision

CTAF: 122.8 WX: 119.925



FIELD ELEVATION	REMARKS	IN-PERSON CONTACT
2705	AWOS: 701-567-4594.	J.B. Lindquist PHONE: 701-567-2069 ADDL PHONE: 701-567-4469 PUBLIC TERMINAL PHONE: No



HILLSBORO 3H4

HILLSBORO REGIONAL

ATTENDANCE: MON-FRI 8am-5pm

FUEL: 100LL - Self Service Credit Card

REPAIRS: MAJOR

Pilot Controlled Lights: CTAF

SNOW REMOVAL: Confirm after storm

Instrument Approach: Non-Precision

CTAF: 122.9

WX: 124.5

FARGO



FIELD ELEVATION	REMARKS	IN-PERSON CONTACT
<p style="font-size: 2em; font-weight: bold;">906</p>	<p>Snow removal: 701-400-1113. flyhillsboro.com MxGwt S-16.5</p>	<p>Larry Mueller PHONE 701-430-1642 ADDL PHONE: 701-400-1113 FBO PUBLIC TERMINAL PHONE: Yes</p>



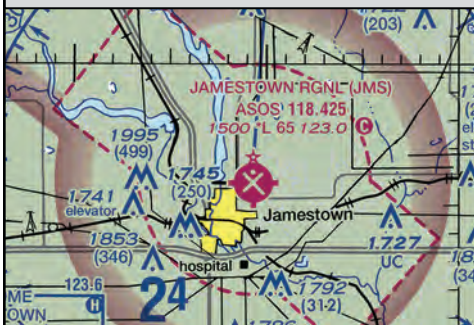
JAMESTOWN JMS

JAMESTOWN REGIONAL

ATTENDANCE: Mon-Fri 8am-5pm
 FUEL: 100LL, JET A - Self Service Credit Card
 REPAIRS: MAJOR

Pilot Controlled Lights: CTAF
 SNOW REMOVAL: Regular
 Instrument Approach: Precision

CTAF: 123.0 WX: 118.425



FIELD ELEVATION	REMARKS	IN-PERSON CONTACT
1499	AWOS: 701-251-9002	PHONE: 701-252-6466 ADDL PHONE: 701-952-1515 PUBLIC TERMINAL PHONE: Yes



KENMARE 7K5

KENMARE MUNICIPAL

ATTENDANCE: UNATTENDED

FUEL: 100LL - Self Service Credit Card

REPAIRS: NONE

Pilot Controlled Lights: CTAF

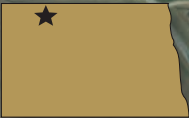
SNOW REMOVAL: Confirm after storm

Instrument Approach: Non-Precision

CTAF: 122.8

WX: 121.1

STANLEY



FIELD ELEVATION	REMARKS	IN-PERSON CONTACT
<p style="text-align: center; font-size: 2em;">1962</p>		<p>Hank Bodmer PHONE 701-848-6322 ADDL PHONE: 701-848-6046 PUBLIC TERMINAL PHONE: Yes</p>



KILLDEER 9Y1

DUNN COUNTY

ATTENDANCE: UNATTENDED

FUEL: 100LL JET A - Self Service Credit Card

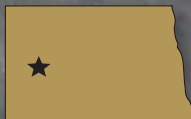
REPAIRS: NONE

Pilot Controlled Lights: CTAF

SNOW REMOVAL: Confirm after storm

CTAF: 122.9

WX: 118.175 WATFORD CITY



FIELD ELEVATION	REMARKS	IN-PERSON CONTACT
2249	Check NOTAMS Snow removal: 701-764-5295	Gregg Synnes PHONE: 701-260-1235 ADDL PHONE: 701-764-5359 PUBLIC TERMINAL PHONE: No



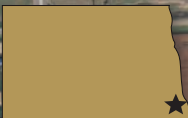
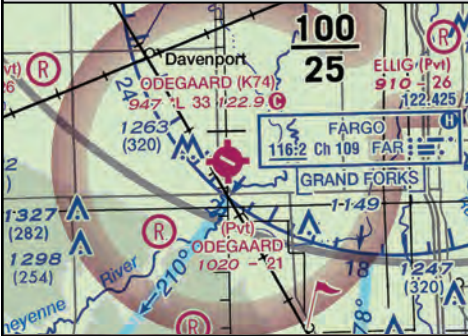
KINDRED K74

ROBERT ODEGAARD FIELD

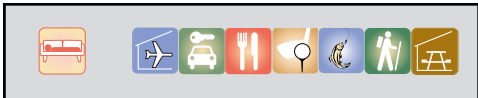
ATTENDANCE: MON-FRI 8AM-5PM
 FUEL: 100LL - Self Service Credit Card
 REPAIRS: MAJOR

Pilot Controlled Lights: CTAF
 SNOW REMOVAL: Confirm after storm
 Instrument Approach: non-precision

CTAF: 122.9 WX: 124.5 FARGO ATIS



FIELD ELEVATION	REMARKS	IN-PERSON CONTACT
<h2>947</h2>		Casey Odegaard PHONE 701-428-9990 ADDL PHONE: 701-238-2305 PUBLIC TERMINAL PHONE: Yes



KULM D03

KULM MUNICIPAL AIRPORT

ATTENDANCE: UNATTENDED
FUEL: NONE **REPAIRS: NONE**

Pilot Controlled Lights: CTAF - LOW
SNOW REMOVAL: Confirm after storm

CTAF: 122.9 **WX: 118.675** **OAKES**



FIELD ELEVATION	REMARKS	IN-PERSON CONTACT
1959	Call ahead for car. Mike: 701-830-0292 Jess: 701-830-2218	Lorence Holmgren PHONE: 701-830-2205 PUBLIC TERMINAL PHONE: YES



LAKOTA 5L0

LAKOTA MUNICIPAL

ATTENDANCE: UNATTENDED

FUEL: NONE

REPAIRS: NONE

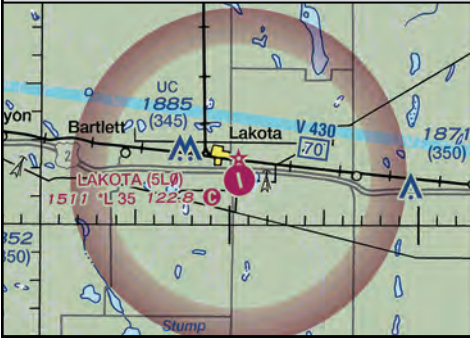
Pilot Controlled Lights: CTAF

SNOW REMOVAL: Confirm after storm

Instrument Approach: non-precision

CTAF: 122.8

WX: 125.875 DEVILS LAKE



FIELD ELEVATION

REMARKS

IN-PERSON CONTACT

1511

Matt Nelson
PHONE 701-247-3112
ADDL PHONE: 701-247-2561
PUBLIC TERMINAL PHONE: YES



LA MOURE 4F9

LA MOURE ROTT MUNICIPAL

ATTENDANCE: M-F 8am-5pm Summer Mos.

FUEL: 100LL CALL AHEAD REPAIRS: NONE

Pilot Controlled Lights: CTAF

SNOW REMOVAL: Confirm after storm

CTAF: 122.9

WX: 118.675

OAKES



FIELD ELEVATION	REMARKS	IN-PERSON CONTACT
<p style="text-align: center; font-size: 2em;">1310</p>	<p>Irrigation pivot east of runway. Cultivated fields 30' from threshold.</p>	<p>Blane Robert PHONE: 701-883-5047 ADDL PHONE: 701-709-0284 PUBLIC TERMINAL PHONE: None</p>



LANGDON D55

ROBERTSON FIELD

ATTENDANCE: MON-FRI 8AM-5PM

FUEL: 100LL REPAIRS: NONE

Pilot Controlled Lights: CTAF
 SNOW REMOVAL: Confirm after storm
 Instrument Approach: non-Precision

CTAF: 122.8 WX: 118.225



FIELD ELEVATION	REMARKS	IN-PERSON CONTACT
1608	AWOS: 701-256-2121 Runway 8/26 closed winter mos. Noise sensitive area NW of field; avoid overflight. Midfield taxiway closed.	Ryan Howatt PHONE 701-370-9710 ADDL PHONE: 701-256-3639 PUBLIC TERMINAL PHONE: NO



LARIMORE 2L1

LARIMORE MUNICIPAL

ATTENDANCE: On Call

FUEL: NONE

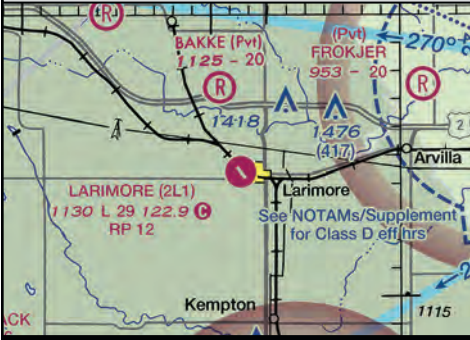
REPAIRS: MINOR

LIGHTS: NONE

SNOW REMOVAL: Confirm after storm

CTAF: 122.9

WX: 119.4 GRAND FORKS



FIELD ELEVATION	REMARKS	IN-PERSON CONTACT
<p style="text-align: center;">1130</p>	<p>Traffic Pattern: Right traffic runway 12 Runway shoulders soft when wet.</p>	<p>Jesse Morten PHONE: 701-343-2065 2nd PHONE Todd Vahna: 218-779-1171 PUBLIC TERMINAL PHONE: Yes</p>



LEEDS D31

LEEDS MUNICIPAL

ATTENDANCE: UNATTENDED

FUEL: NONE

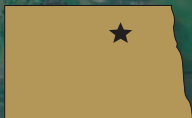
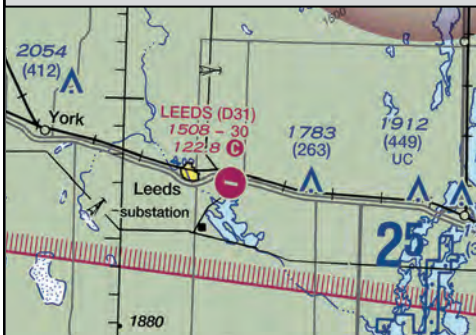
REPAIRS: NONE

LIGHTS: NONE

SNOW REMOVAL: Confirm after storm

CTAF: 122.8

WX: 125.875 DEVILS LAKE



FIELD ELEVATION	REMARKS	IN-PERSON CONTACT
1508	Call ahead for hangar.	Erika Kenner PHONE 406-581-1188 ADDL PHONE: 701-740-7309 PUBLIC TERMINAL PHONE: None



LIDGERWOOD 4N4

LIDGERWOOD MUNICIPAL

ATTENDANCE: UNATTENDED

FUEL: NONE

REPAIRS: NONE

LIGHTS: NONE

SNOW REMOVAL: NONE

CTAF: 122.9

WX: 118.325 GWINNER



FIELD ELEVATION	REMARKS	IN-PERSON CONTACT
1081	Closed winter months. Steep drop - water on both sides of runway.	Alfred Neiber PHONE: 701-640-0107 PUBLIC TERMINAL PHONE: None



LINTON 7L2

LINTON MUNICIPAL

ATTENDANCE: MON-FRI 8-5PM/ON CALL
 FUEL: 100LL, JET A - Self Service Credit Card
 REPAIRS: MAJOR

Pilot Controlled Lights: CTAF
 SNOW REMOVAL: Confirm after storm
 Instrument Approach: non-Precision

CTAF: 122.9 WX: 118.175



FIELD ELEVATION	REMARKS	IN-PERSON CONTACT
<p style="text-align: center; font-size: 2em;">1778</p>	<p>AWOS: 701-254-4965</p>	<p>Mike Gunia PHONE 701-254-5449 ADDL PHONE: 701-321-0913 PUBLIC TERMINAL PHONE: Yes</p>



LISBON 6L3

LISBON MUNICIPAL

ATTENDANCE: On Call
 FUEL: 100LL - Self Service Credit Card
 REPAIRS: NONE

Pilot Controlled Lights: CTAF
 SNOW REMOVAL: Confirm after storm
 Instrument Approach: non-Precision

CTAF: 122.9 WX: 118.325 WINNER



FIELD ELEVATION	REMARKS	IN-PERSON CONTACT
1241	Ry 03/21 closed winter months. Concrete apron for Twin aircraft.	Ben Halstenson PHONE: 701-739-5463 ADDL PHONE: 701-683-5501



MADDOCK 6D3

MADDOCK MUNICIPAL

ATTENDANCE: ON CALL

FUEL: NONE

REPAIRS: NONE

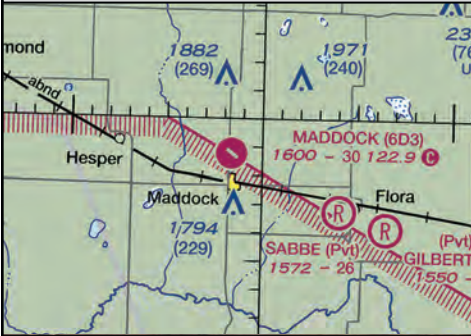
LIGHTS: Low/Solar

SNOW REMOVAL: Confirm after storm

CTAF: 122.9

WX: 118.825

HARVEY



FIELD ELEVATION	REMARKS	IN-PERSON CONTACT
1600	Public Apron & Hangar on West side. Private spray pad North. Call ahead for car.	Richard Slater PHONE: 701-739-4875 ADDL PHONE: 701-438-2444 PUBLIC TERMINAL PHONE: None



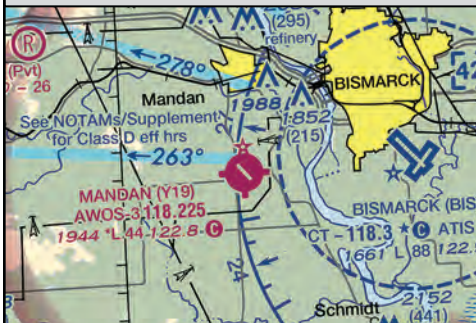
MANDAN Y19

MANDAN MUNICIPAL

ATTENDANCE: M-F 8-5pm/Weekends on Call
 FUEL: 100LL, JET A REPAIRS: MAJOR

Pilot Controlled Lights: CTAF
 SNOW REMOVAL: Confirm after storm
 Instrument Approach: Non-Precision

CTAF: 122.8 WX: 118.225



FIELD ELEVATION	REMARKS	IN-PERSON CONTACT
1944	AWOS: 701-663-0271 Traffic Pattern: Left Helicopter - Right Email: manager@mandanairport.com www.mandanairport.com	Jim Lawler PHONE: 701-663-0669 ADDL PHONE: 701-391-1394 PUBLIC TERMINAL PHONE: Yes



MAYVILLE D56

MAYVILLE MUNICIPAL

ATTENDANCE: M-F 8-5 SUMMER/ON CALL WINTER

FUEL: NONE

REPAIRS: NONE

Pilot Controlled Lights: CTAF

SNOW REMOVAL: Confirm after storm

CTAF: 122.8

WX: 119.4

GRAND FORKS



FIELD ELEVATION	REMARKS	IN-PERSON CONTACT
<p style="text-align: center; font-size: 2em; font-weight: bold;">977</p>		<p>Lance Fugleberg PHONE 701-361-0330 ADDL PHONE: 701-430-1521 PUBLIC TERMINAL PHONE: NO</p>

MCCLUSKY 7G2

MCCLUSKY MUNICIPAL

ATTENDANCE: UNATTENDED

FUEL: NONE

REPAIRS: NONE

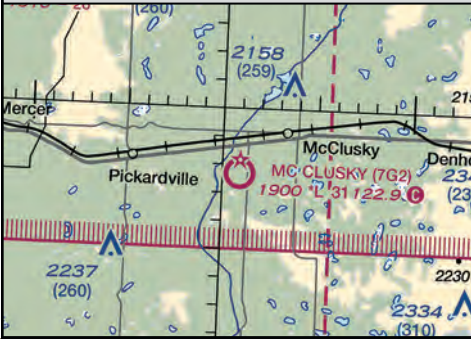
LIGHTS: NONE

SNOW REMOVAL: NONE

CTAF: 122.9

WX: 118.825

HARVEY



FIELD ELEVATION	REMARKS	IN-PERSON CONTACT
<p>1900</p>	<p>Runway turf has numerous grass clumps</p>	<p>Orrin Holen PHONE: 701-363-2221 ADDL PHONE: 701-363-2945 PUBLIC TERMINAL PHONE: None</p>



MCVILLE 8M6

MCVILLE MUNICIPAL

ATTENDANCE: UNATTENDED

FUEL: NONE

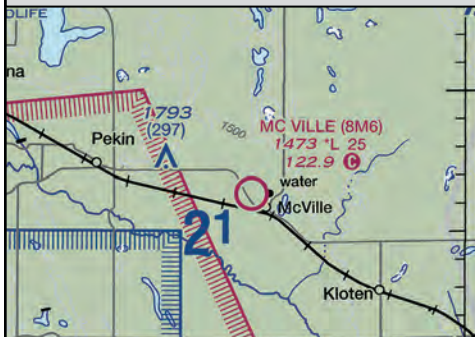
REPAIRS: NONE

Pilot Controlled Lights: CTAF

SNOW REMOVAL: Confirm after storm

CTAF: 122.9

WX: 118.75 COOPERSTOWN



FIELD ELEVATION	REMARKS	IN-PERSON CONTACT
1473	No lighting 18/36	Chanda Arneson PHONE 701-322-4343 ADDL PHONE: 701-210-2819 PUBLIC TERMINAL PHONE: None



MILNOR 4R6

MILNOR MUNICIPAL AIRPORT

ATTENDANCE: UNATTENDED

FUEL: NONE

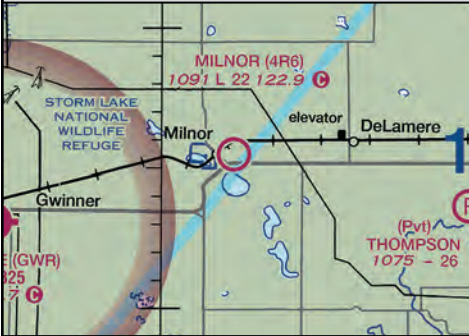
REPAIRS: NONE

LIGHTS: Low

SNOW REMOVAL: Confirm after storm

CTAF: 122.9

WX: 118.325 GWINNER



FIELD ELEVATION	REMARKS	IN-PERSON CONTACT
<p style="font-size: 2em; font-weight: bold;">1091</p>	<p>Fuel available for emergency. Contact manager. Turbulence due to trees N/S of runway. www.milnorairport.com</p>	<p>Mark Gainor - chrnm PHONE: 701-680-1001 ADDL PHONE: 701-680-1146 PUBLIC TERMINAL PHONE: Yes</p>



MINOT MOT

MINOT INTERNATIONAL

ATTENDANCE: 24-HOUR SERVICES
FUEL: 100LL, JET A REPAIRS: MAJOR

Pilot Controlled Lights: CTAF/ Tower Controlled
 SNOW REMOVAL: Regular 24-hr Service
 Instrument Approach: Precision

GROUND 121.9 TOWER/CTAF: 118.2
WX: 118.725 UNICOM: 122.95



FIELD ELEVATION	REMARKS	IN-PERSON CONTACT
1715	US Customs: 701-838-6704. Dakota territory Air Museum north end of field. www.MOTairport.com ATC HOURS: 0700-2200 AWOS: 701-837-9379	Rick Feltner PHONE 701-857-4725 PUBLIC TERMINAL PHONE: Yes



MINTO D06

MINTO MUNICIPAL AIRPORT

ATTENDANCE: May-Sep 8-5pm /On Call

FUEL: NONE

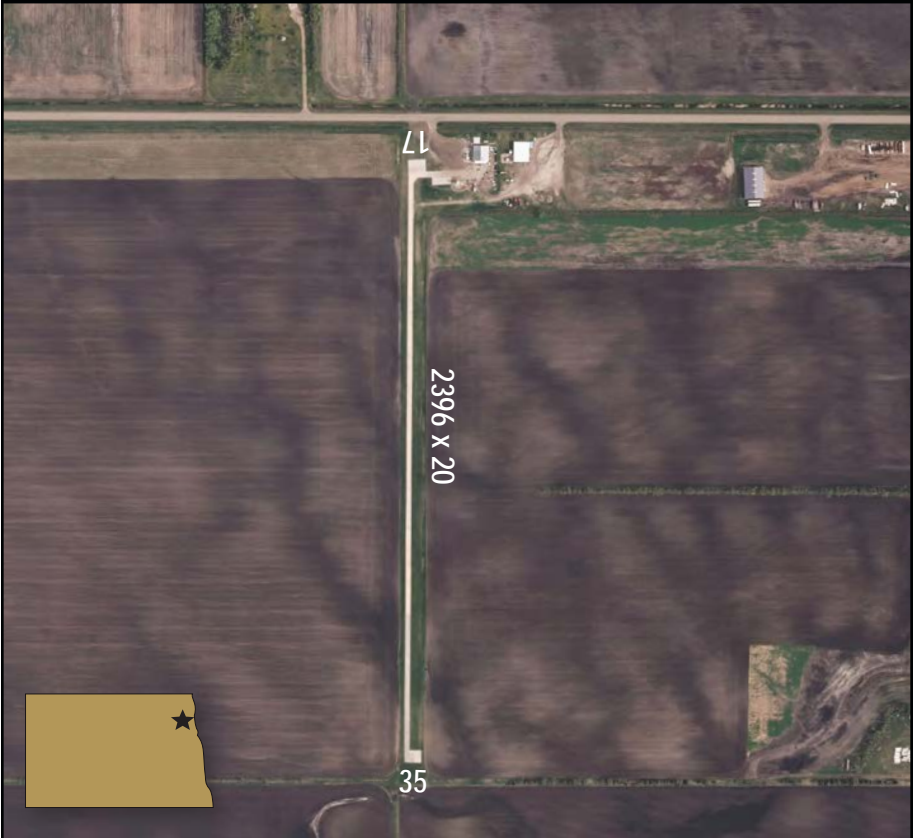
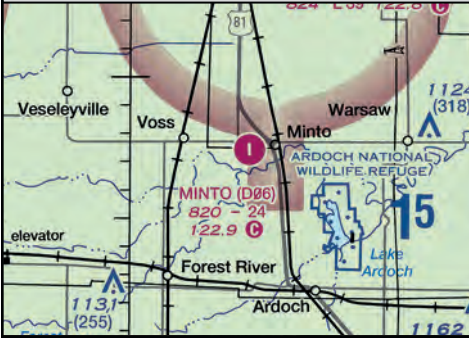
REPAIRS: NONE

LIGHTS: NONE

SNOW REMOVAL: Confirm after storm

CTAF: 122.9

WX: 118.625 GRAFTON



FIELD ELEVATION	REMARKS	IN-PERSON CONTACT
820	Closed winter months.	Chris Misialek PHONE: 701-248-3978 ADDL PHONE: 701-520-1596 PUBLIC TERMINAL PHONE: NONE



MOHALL HBC

MOHALL MUNICIPAL

ATTENDANCE: ON CALL

FUEL: 100LL, JET A - Self Service Credit Card

REPAIRS: NONE

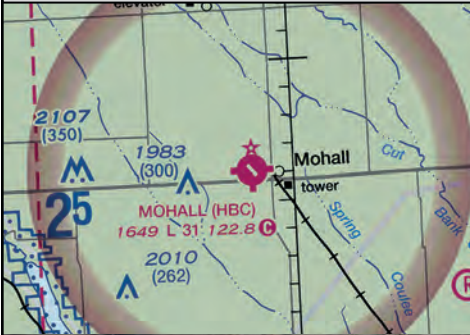
Pilot Controlled Lights: CTAF

SNOW REMOVAL: Confirm after storm

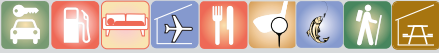
Instrument Approach: Non-Precision

CTAF: 122.8

WX: 118.725 MINOT
(60 NM)



FIELD ELEVATION	REMARKS	IN-PERSON CONTACT
1649		Mike Nehring PHONE 701-263-1008/756-7177 ADDL PHONE: 701-756-7258/6464 PUBLIC TERMINAL PHONE: Yes



Car available upon request

MOTT 3P3

MOTT MUNICIPAL

ATTENDANCE: UNATTENDED
 FUEL: 100LL - Self Service Credit Card
 REPAIRS: NONE

Pilot Controlled Lights: CTAF
 SNOW REMOVAL: Confirm after storm

CTAF: 122.9 WX: 118.375 DICKINSON
 (60 NM)



FIELD ELEVATION	REMARKS	IN-PERSON CONTACT
<h2>2413</h2>		Rex Kelsch PHONE: 701-824-2983 ADDL PHONE: 701-440-0281 PUBLIC TERMINAL PHONE: Yes



NAPOLEON 5B5

NAPOLEON MUNICIPAL

ATTENDANCE: UNATTENDED

FUEL: 100LL

REPAIRS: NONE

Pilot Controlled Lights: CTAF

SNOW REMOVAL: Contact after storm

CTAF: 122.9

WX: 118.175

LINTON



FIELD ELEVATION

REMARKS

IN-PERSON CONTACT

1985

Runway 8/26 closed in winter.
For fuel after hours call
manager.

Chris Weigel 701-329-0724
701-426-4537
PUBLIC TERMINAL PHONE: None



NEW ROCKFORD 8J7

TOMLINSON FIELD

ATTENDANCE: UNATTENDED

FUEL: NONE

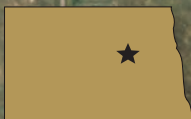
REPAIRS: NONE

LIGHTS: Low-Sunset to Sunrise

SNOW REMOVAL: Confirm after storm

CTAF: 122.9

WX: 118.575 CARRINGTON



FIELD ELEVATION	REMARKS	IN-PERSON CONTACT
<p style="text-align: center; font-size: 2em; font-weight: bold;">1533</p>		<p>Erling Rolfson PHONE: 701-650-8418 ADDL PHONE: 701-947-2461 PUBLIC TERMINAL PHONE: Yes</p>



NEW TOWN 05D

NEW TOWN MUNICIPAL

ATTENDANCE: UNATTENDED

FUEL: NONE

REPAIRS: NONE

Pilot Controlled Lights: CTAF

SNOW REMOVAL: Confirm after storm

CTAF: 122.9

WX: 121.1

STANLEY



FIELD ELEVATION

REMARKS

IN-PERSON CONTACT

1923

Mylo Wolding
 PHONE 701-898-4918
 ADDL PHONE: 701-421-9019
 PUBLIC TERMINAL PHONE: None



NORTHWOOD 4V4

MUNICIPAL - VINCE FIELD

ATTENDANCE: MON-FRI 8-5PM

FUEL: 100LL

REPAIRS: MAJOR

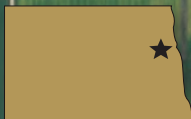
Pilot Controlled Lights: CTAF

SNOW REMOVAL: Confirm after storm

Instrument Approach: non-Precision

CTAF: 122.8

WX: 119.4 GFK ATIS



FIELD ELEVATION	REMARKS	IN-PERSON CONTACT
1119	Traffic Pattern: Runway 8 right traffic. For fuel contact: (701) 587-5171	Rich Altendorf PHONE: 701-587-5171 ADDL PHONE: 218-779-6567 PUBLIC TERMINAL PHONE: Yes



OAKES 2D5

OAKES MUNICIPAL

ATTENDANCE: MAY-OCT M-F 8AM-5PM

FUEL: 100LL, JET A REPAIRS: NONE

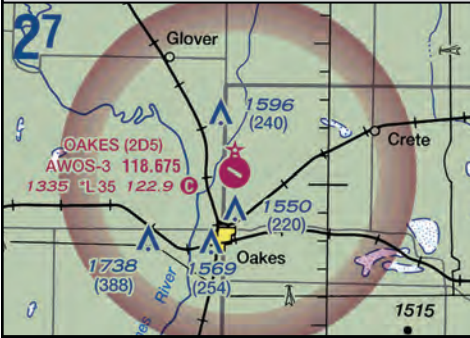
Pilot Controlled Lights: CTAF

SNOW REMOVAL: Confirm after storm

Instrument Approach: non-Precision

CTAF: 122.9

WX: 118.675



FIELD ELEVATION	REMARKS	IN-PERSON CONTACT
1334	AWOS: 701-742-3991 Ry 17/35 closed winter months. Turf runway clumpy. Call ahead for fuel.	Arnie Widmer PHONE 701-779-3725 ADDL PHONE: 701-742-2231 PUBLIC TERMINAL PHONE: Yes



PAGE 64G

PAGE REGIONAL

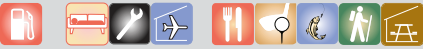
ATTENDANCE: M-F 8-5/ on call weekends
 FUEL: 100LL REPAIRS: MAJOR

LIGHTS: NONE
 SNOW REMOVAL: Confirm after storm

CTAF: 122.9 WX: 118.725 VALLEY CITY



FIELD ELEVATION	REMARKS	IN-PERSON CONTACT
1218	Call ahead for fuel. Road south of airport. Grain fields at both Ry ends.	Tim McPherson PHONE: 701-668-2302 ADDL PHONE: 701-488-2586 PUBLIC TERMINAL PHONE: Yes



PARK RIVER Y37

W.C. SKJERVEN

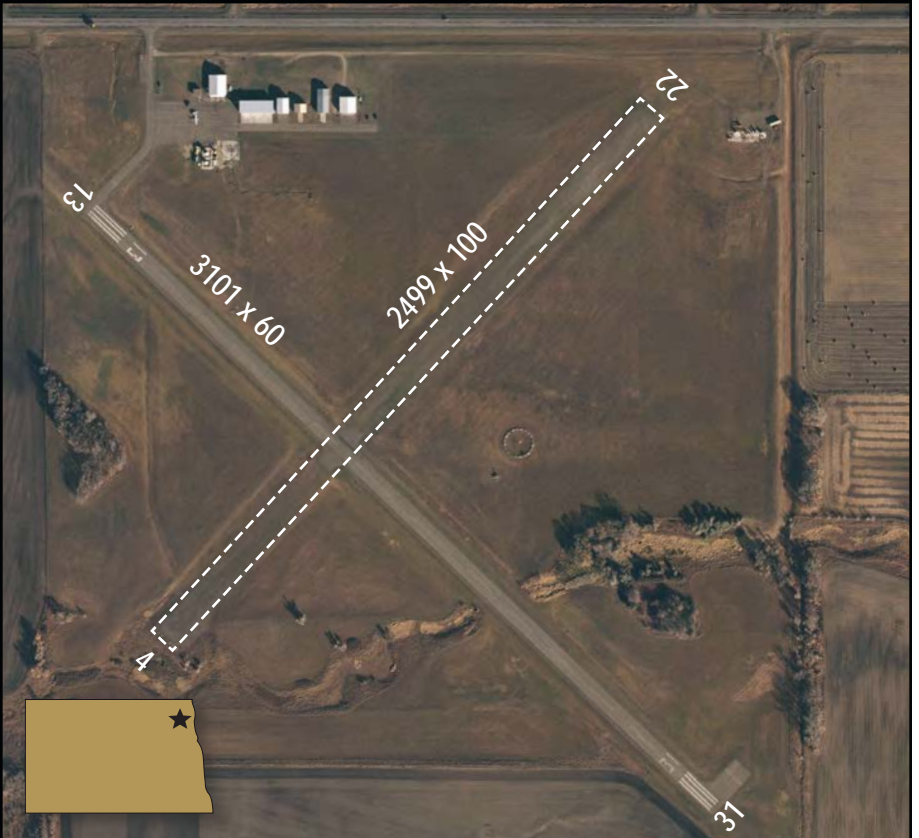
ATTENDANCE: MON-FRI 8-5PM/ ON CALL

FUEL: 100LL REPAIRS: MAJOR

Pilot Controlled Lights: CTAF

SNOW REMOVAL: Confirm after storm

CTAF: 122.8 WX: 118.625 GRAFTON



FIELD ELEVATION	REMARKS	IN-PERSON CONTACT
1104	Ry 4/22 closed winter months & surface clumpy.	Glenn Wharam PHONE 701-331-1110 ADDL PHONE: 701-331-0818 PUBLIC TERMINAL PHONE: No



PARSHALL Y74

PARSHALL-HANKINS



ATTENDANCE: On Call

FUEL: 100LL

REPAIRS: NONE

LIGHTS: NONE

SNOW REMOVAL: Call after storm

CTAF: 122.9

WX: 121.1

STANLEY



FIELD ELEVATION

REMARKS

IN-PERSON CONTACT

2032

City snow removal 862-3459.

Richard Bolkan
PHONE: 701-898-3144
ADDL PHONE: 701-862-3386
PUBLIC TERMINAL PHONE: Yes



PEMBINA PMB

THOMAS NORD FIELD

ATTENDANCE: 8-8, 7 DAYS A WEEK

FUEL: 100LL REPAIRS: MAJOR

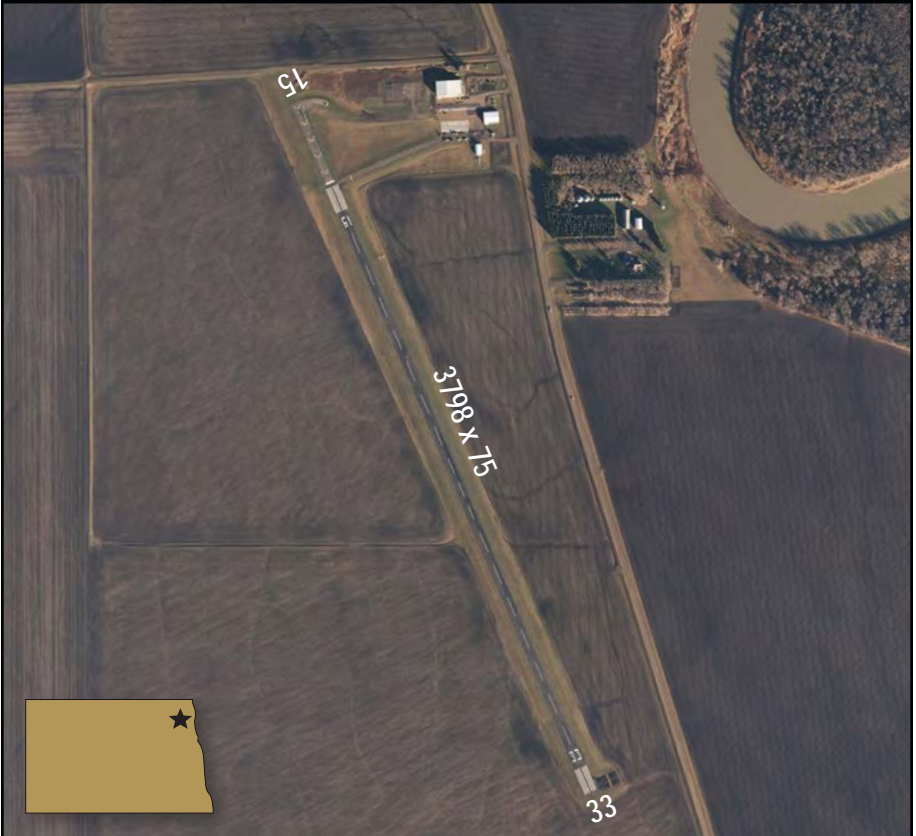
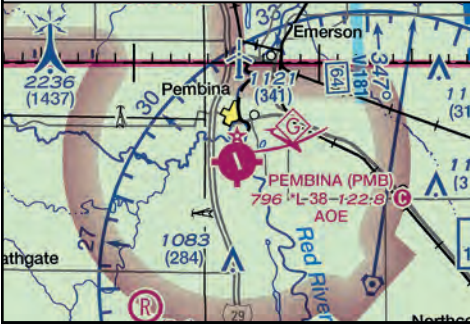
Pilot Controlled Lights: CTAF

SNOW REMOVAL: Confirm after storm

Instrument Approach: Non-Precision

CTAF: 122.8

WX: 126.47 HALLOCK



FIELD ELEVATION

REMARKS

IN-PERSON CONTACT

795

US Customs service-Phone:
701-825-5849 or 701-825-6201.

Terry Nord
PHONE 701-825-6615
ADDL PHONE: 701-331-4458
PUBLIC TERMINAL PHONE: Yes

PLAZA Y99

TRULSON FIELD

ATTENDANCE: UNATTENDED

FUEL: NONE

REPAIRS: NONE

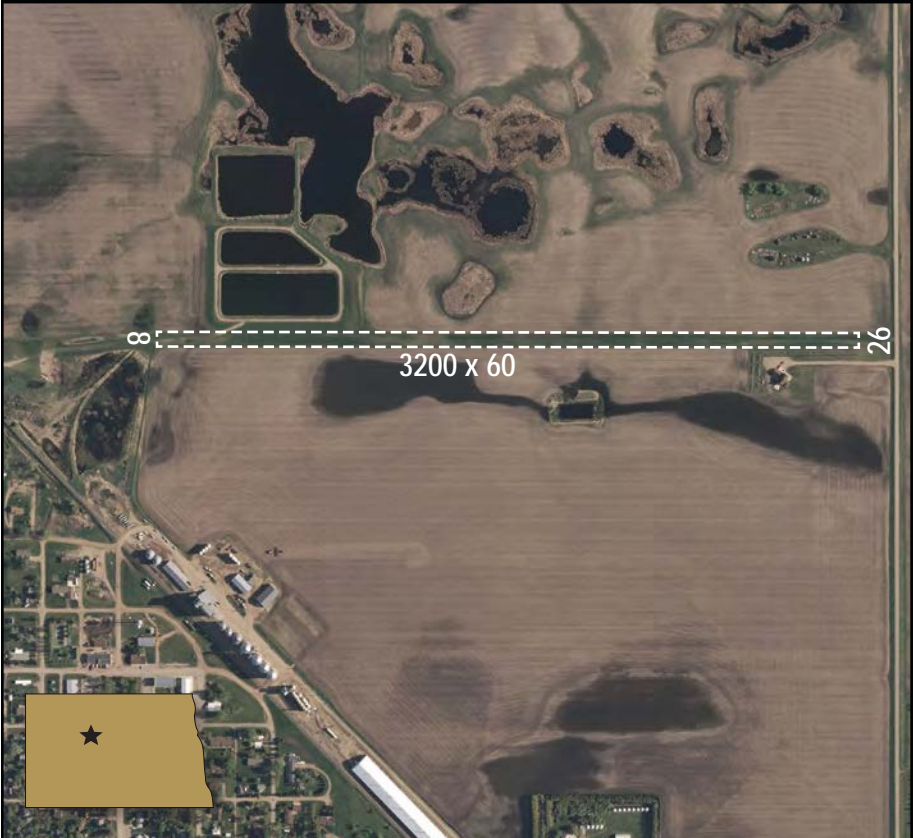
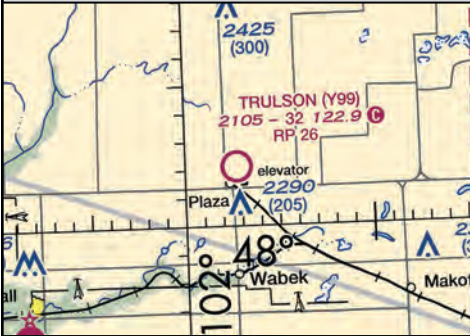
LIGHTS: NONE

SNOW REMOVAL: Confirm after storm

CTAF: 122.9

WX: 121.1

STANLEY



FIELD ELEVATION

REMARKS

IN-PERSON CONTACT

2105

Runway 26 - right traffic.
Call prior for conditions.
House and trees close to
runway

Jay Harstad
PHONE: 701-898-3387/453-3387
PUBLIC TERMINAL PHONE: None



RICHARDTON 4E8

RICHARDTON MUNICIPAL

ATTENDANCE: UNATTENDED

FUEL: NONE

REPAIRS: NONE

LIGHTS: NONE

SNOW REMOVAL: NONE

CTAF: 122.9

WX: 118.375 DICKINSON



FIELD ELEVATION	REMARKS	IN-PERSON CONTACT
2498	120' wind tower 800' north. Cattle grazing Aug-Dec. Call airport manager 24hr. prior to landing	Jody Hoff PHONE 701-974-3315 ADDL PHONE: 701-974-4230 city PUBLIC TERMINAL PHONE: None



RIVERDALE 37N

GARRISON DAM RECREAT'L AIRPORT

ATTENDANCE: UNATTENDED

FUEL: NONE

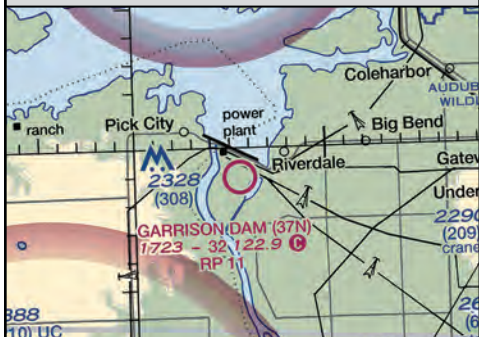
REPAIRS: NONE

LIGHTS: NONE

SNOW REMOVAL: NONE

CTAF: 122.9

WX: 118.675 HAZEN



FIELD ELEVATION

REMARKS

IN-PERSON CONTACT

1723

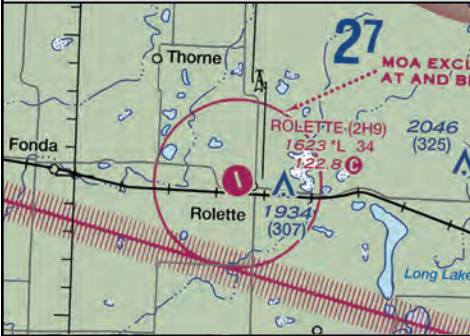
Runway 11 - Right-traffic.
Runway 11 Displaced Threshold.
Seasonal - Closed in winter.
Runway is gravel.

Kyle Wanner
PHONE: 701-328-9650
ADDL PHONE: 701-425-5926
PUBLIC TERMINAL PHONE: NONE



ROLETTE 2H9

ROLETTE AIRPORT



ATTENDANCE: UNATTENDED

FUEL: NONE

REPAIRS: NONE

Pilot Controlled Lights: CTAF

SNOW REMOVAL: Confirm after storm

CTAF: 122.8

WX: 118.125 ROLLA



FIELD ELEVATION

REMARKS

IN-PERSON CONTACT

1623

Rwy width only 40'.
Lights 20' from runway edge.

Mark Myhre
PHONE 701-246-3395
ADDL PHONE: 701-246-3348
PUBLIC TERMINAL PHONE: None



ROLLA 06D

ROLLA MUNICIPAL

ATTENDANCE: M-F 8am-5pm

FUEL: 100LL, JET A - Self Service Credit Card

REPAIRS: NONE

Pilot Controlled Lights: CTAF

SNOW REMOVAL: Confirm after storm

Instrument Approach: non-Precision

CTAF: 122.8

WX: 118.125



FIELD ELEVATION

REMARKS

IN-PERSON CONTACT

1822

Ry 7/25 closed winters.
AWOS:701-477-0055

Gordon Krech
PHONE: 701-477-5145
ADDL PHONE: 701-477-6780
PUBLIC TERMINAL PHONE: Yes



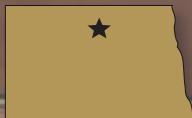
RUGBY RUG

RUGBY MUNICIPAL

ATTENDANCE: Mon-Fri 8-5pm/ On Call
FUEL: 100LL, JETA- Self Service Credit Card
REPAIRS: NONE

Pilot Controlled Lights: CTAF
SNOW REMOVAL: Regular
Instrument Approach: non-Precision

CTAF: 122.8 WX: 118.475



FIELD ELEVATION	REMARKS	IN-PERSON CONTACT
1549	AWOS: 701-776-6100.	Steve Schneider PHONE 701-776-5171 ADDL PHONE: 701-208-1630 PUBLIC TERMINAL PHONE: Yes

STANLEY 08D

STANLEY MUNICIPAL

ATTENDANCE: ON CALL

FUEL: 100LL 92 AUTO - Self service credit card

REPAIRS: YES

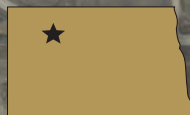
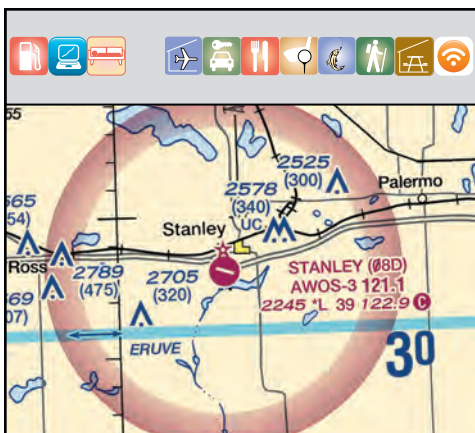
Pilot Controlled Lights: CTAF

SNOW REMOVAL: Confirm after storm

Instrument Approach: non-precision

CTAF: 122.9

WX: 121.1

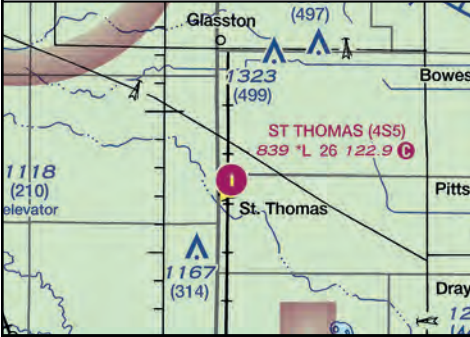


FIELD ELEVATION	REMARKS	IN-PERSON CONTACT
2245	Activate lights CTAF. Road south of airport. AWOS: 701-628-1737	Jason Bromley PHONE: 612-867-1849 ADDL PHONE: 701-830-0474 PUBLIC TERMINAL PHONE: Yes



ST. THOMAS 4S5

ST. THOMAS MUNICIPAL



ATTENDANCE: M-F 8AM-5PM SUMMER

FUEL: NONE

REPAIRS: NONE

Pilot Controlled Lights: CTAF

SNOW REMOVAL: Confirm after storm

CTAF: 122.9

WX: 118.275

CAVALIER



FIELD ELEVATION	REMARKS	IN-PERSON CONTACT
839	NO runway markings. Roadway N and S of airport	John Blair PHONE 701-520-1597 ADDL PHONE: 701-257-6765 PUBLIC TERMINAL PHONE: Yes



TIOGA D60

TIOGA MUNICIPAL

ATTENDANCE: M-F 8am-5pm

FUEL: 100LL, JET A REPAIRS: MINOR

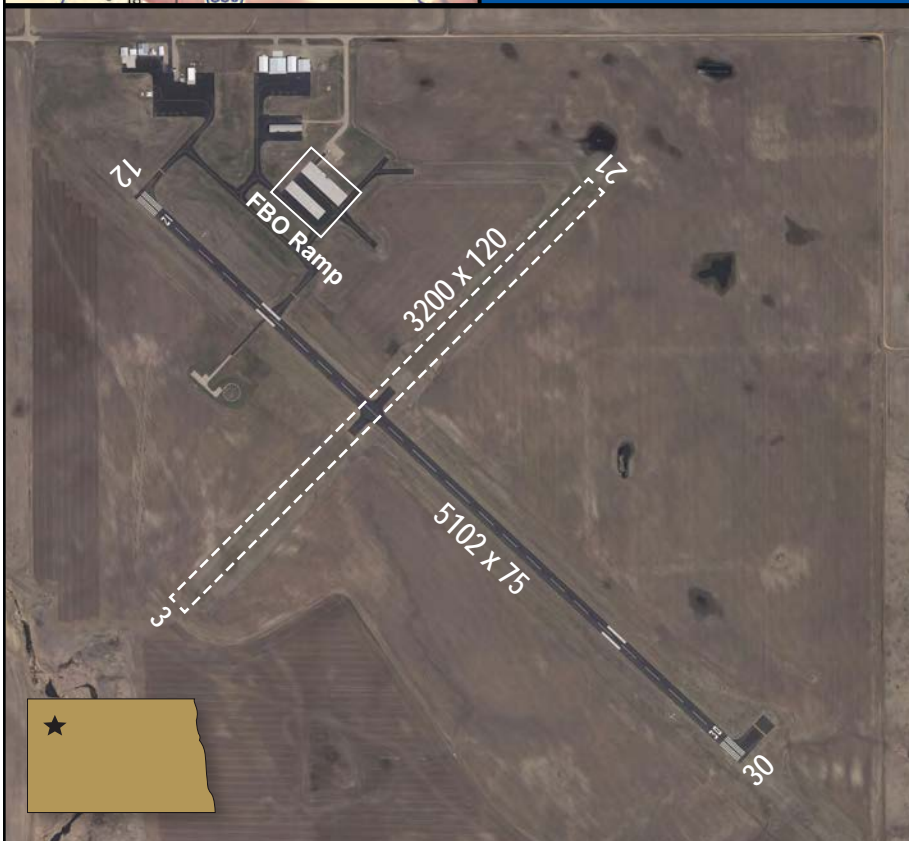
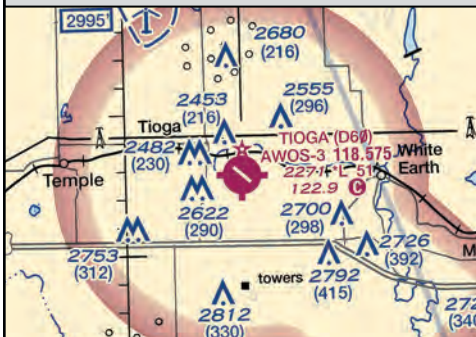
Pilot Controlled Lights: CTAF

SNOW REMOVAL: Confirm after storm

Instrument Approach: non-Precision

CTAF: 122.9

WX: 118.575



FIELD ELEVATION	REMARKS	IN-PERSON CONTACT
2270	AWOS: 701-664-4490 Rental cars at Tioga Aero Center	Tioga Aero Center PHONE: 701-641-6020 PUBLIC TERMINAL PHONE: Yes



TOWNER D61

TOWNER MUNICIPAL

ATTENDANCE: UNATTENDED

FUEL: NONE

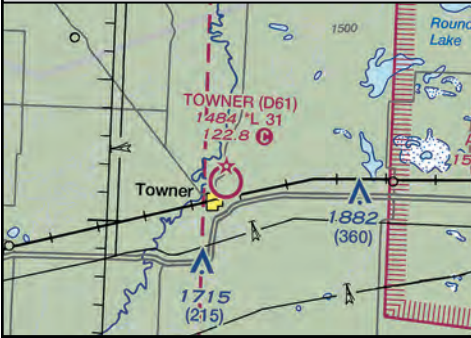
Pilot Controlled Lights: CTAF

SNOW REMOVAL: Confirm after storms

CTAF: 122.8

WX: 118.475

RUGBY



FIELD ELEVATION

REMARKS

IN-PERSON CONTACT

1484

Runway 16 - 30' pole 500 ft.
from end.
Runway 34 - 3' ditch.

Daniel Gunter
PHONE 701-537-3519
ADDL PHONE: 701-537-5687
PUBLIC TERMINAL PHONE: NONE



TURTLE LAKE 91N

TURTLE LAKE MUNICIPAL

ATTENDANCE: UNATTENDED

FUEL: NONE

REPAIRS: NONE

Pilot Controlled Lights: CTAF

SNOW REMOVAL: Confirm after storm

CTAF: 122.8

WX: 118.675

HAZEN



FIELD ELEVATION

REMARKS

IN-PERSON CONTACT

1916

Runway 8 end 10' dropoff 50'
from threshold.

Jon Seeger
PHONE: 701-220-0707
PUBLIC TERMINAL PHONE: None



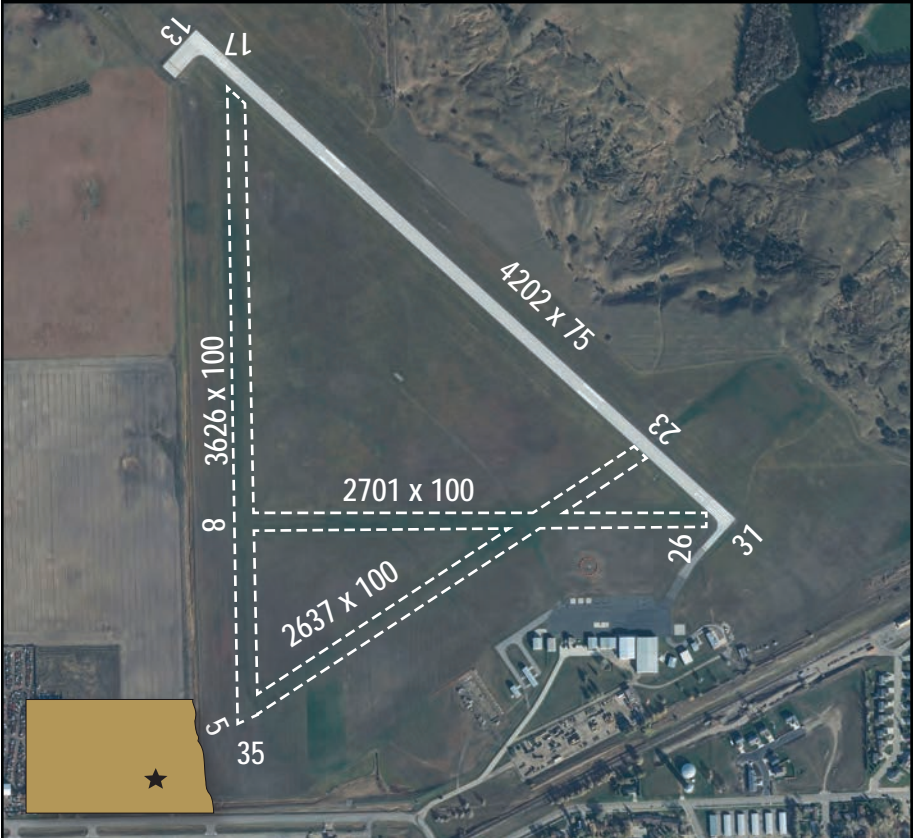
VALLEY CITY BAC

BARNES COUNTY MUNICIPAL

ATTENDANCE: Mon-Fri 8-5pm On Call
FUEL: 100LL, JET A - Self Service Credit Card
REPAIRS: MAJOR

Pilot Controlled Lights: CTAF
 SNOW REMOVAL: Regular
 Instrument Approach: non-precision

CTAF: 122.8 WX: 118.725



FIELD ELEVATION

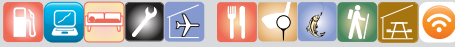
REMARKS

IN-PERSON CONTACT

1401

AWOS: 701-845-9117.
 Turf Ry's closed winters.

Michael Lerud
 PHONE 701-840-5903
 ADDL PHONE: 701-845-2100
 793-0626 FBO
 PUBLIC TERMINAL PHONE: Yes



WAHPETON BWP

HARRY STERN

ATTENDANCE: Mon-Fri 8-5pm

FUEL: 100*LL, JET A - Self Service Credit Card

REPAIRS: MAJOR

Pilot Controlled Lights: CTAF

SNOW REMOVAL: Confirm after storm

Instrument Approach: Non-Precision

CTAF: 123.0

WX: 127.875



FIELD ELEVATION	REMARKS	IN-PERSON CONTACT
<p style="text-align: center; font-size: 2em; font-weight: bold;">968</p>	<p>AWOS: 701-642-9800. Turf runway closed winters. Taxi Service: 701-642-5757.</p>	<p>Jan Klein PHONE: 701-361-0230 ADDL PHONE: 701-642-5777 PUBLIC TERMINAL PHONE: Yes</p>



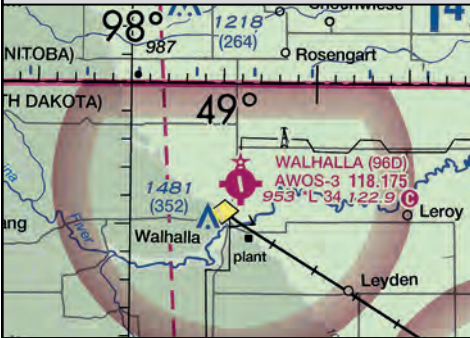
WALHALLA 96D

WALHALLA MUNICIPAL

ATTENDANCE: On Call
 FUEL: 100LL - Self Service Credit Card
 REPAIRS: NONE

Pilot Controlled Lights: CTAF
 SNOW REMOVAL: Confirm after storm
 Instrument Approach: non-precision

CTAF: 122.9 WX: 118.175



FIELD ELEVATION	REMARKS	IN-PERSON CONTACT
953	Activate lights CTAF. AWOS: 701-549-3402	David Carignan PHONE 701-549-3500 ADDL PHONE: 701-265-2617 PUBLIC TERMINAL PHONE: None



WASHBURN 5C8

WASHBURN MUNICIPAL



ATTENDANCE: UNATTENDED

FUEL: NONE

REPAIRS: NONE

Pilot Controlled Lights: CTAF

SNOW REMOVAL: Confirm after storm

CTAF: 122.9

WX: 118.675

HAZEN



FIELD ELEVATION

REMARKS

IN-PERSON CONTACT

1908

Turf runway closed winter months.
Activate lights CTAF

Ron Becker
PHONE: 701-315-0860
ADDL PHONE: 701-462-7331
PUBLIC TERMINAL PHONE: None



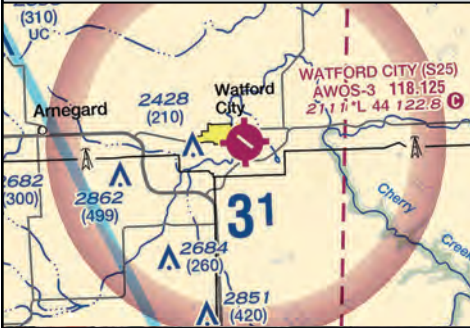
WATFORD CITY S25

WATFORD CITY MUNICIPAL

ATTENDANCE: M-F 8AM-5PM/ON CALL
FUEL: 100LL, JET A - Full Service
REPAIRS: MINOR

Pilot Controlled Lights: CTAF
 SNOW REMOVAL: Confirm after storm
 Instrument Approach: Non-Precision

CTAF: 122.8 WX: 118.125



FIELD ELEVATION	REMARKS	IN-PERSON CONTACT
2111	AWOS: 701-842-4855. Manager Cell: 701-570-2646	Luke Taylor PHONE 701-444-3207 Watford Aero Services: 701-300-3045 PUBLIC TERMINAL PHONE: Yes



WEST FARGO D54

WEST FARGO MUNICIPAL

ATTENDANCE: Mon-Fri 8-5pm

FUEL: 100LL

REPAIRS: MAJOR

Pilot Controlled Lights: CTAF

SNOW REMOVAL: Confirm after storm

CTAF: 122.7

WX: 124.5 ATIS FARGO



FIELD ELEVATION	REMARKS	IN-PERSON CONTACT
896	Traffic Pattern 800 AGL. Runway 18 right traffic. Parachute jumping.	Robbie Grande PHONE: 701-371-2655 PUBLIC TERMINAL PHONE: Yes



WESTHOPE D64

WESTHOPE MUNICIPAL

ATTENDANCE: UNATTENDED

FUEL: NONE

REPAIRS: NONE

LIGHTS: Inop Indefinitely

SNOW REMOVAL: Confirm after storm

CTAF: 122.9

WX: 118.725 MINOT



FIELD ELEVATION	REMARKS	IN-PERSON CONTACT
1492	Ry 13 3' Road 100' outbound.	Chad Tofteland PHONE 701-263-1304 ADDL PHONE: 701-263-1383 PUBLIC TERMINAL PHONE: Outside



WILLISTON ISN

SLOULIN FIELD INTERNATIONAL

ATTENDANCE: 5am - 1am

FUEL: 100LL, JET A REPAIRS: MAJOR

Pilot Controlled Lights: CTAF

SNOW REMOVAL: Regular

Instrument Approach: Precision

CTAF: 122.8

WX: 125.92



FIELD ELEVATION	REMARKS	IN-PERSON CONTACT
<h2>1981</h2>	AWOS: 701-774-3124. Pattern Altitude 800 AGL. US Customs: 701-770-2460 Runways 11 & 20 right traffic. Future airport expected to open Fall 2019 - Identifier KXWA	Anthony Dudas PHONE: 701-774-8594 ADDL PHONE: FBO 701-774-2300 PUBLIC TERMINAL PHONE: YES



WISHEK 6L5

WISHEK MUNICIPAL

ATTENDANCE: UNATTENDED

FUEL: NONE

REPAIRS: NONE

Pilot Controlled Lights: CTAF

SNOW REMOVAL: Confirm after storm

CTAF: 122.9

WX: 118.175

LINTON



FIELD ELEVATION

REMARKS

IN-PERSON CONTACT

2042

Jeff Schauer
PHONE: 701-866-0500
ADDL PHONE: 701-452-2314/4291
PUBLIC TERMINAL PHONE: Outside

METAR ABBREVIATIONS

ABBREVIATIONS

AOI	Automated Observation without precipitation discriminator (rain/snow)
AO2	Automated Observation with precipitation discriminator (rain/snow)
AMD	Amended Forecast (TAF)
BECMG	Becoming (expected between 2-digit beginning hour and 2-digit ending hour)
BKN	Broken
CLR	Clear at or below 12,000 feet (AWOS/ASOS report)
COB	Correction to the observation
FEW	1 or 2 octas (eighths) cloud coverage
FM	From (4 digit beginning time in hours and minutes)
LDG	Landing
M	In temperature field means "minus" or below zero
M	In RVR listing indicates visibility less than lowest reportable sensor value (e.g. M600)
NO	Not available (e.g. SLPNO, RVRNO)
NSW	No Significant Weather
OVC	Overcast
P	In RVR indicates visibility greater than highest reportable sensor value (e.g. P6000FT)
P6SM	Visibility greater than 6 SM (TAF only)
PROB40	Probability 40 percent
R	Runway (used in RVR measurement)
RMK	Remark
RV/RWY	Runway
SCT	Scattered
SKC	Sky Clear
SLP	Sea Level Pressure (e.g., 1013 reported as 013)
SM	Statute mile(s)
SPECI	Special Report
TEMPO	Temporary changes expected (between 2-digit beginning hour and 2-digit ending hour)
TKOF	Takeoff
T01760158, 10142, 20012 and 401120084	In Remarks-examples of temperature information
V	Varies (wind direction and RVR)
VC	Vicinity
VRB	Variable wind direction when speed is less than or equal to 6 knots
VV	Vertical Visibility
WS	Wind shear (In TAFs, low level and not associated with convective activity)

DESCRIPTORS

BC	Patches	MI	Shallow
BL	Blowing	PR	Partial
DR	Low Drifting	SH	Showers
FZ	Supercooled/freezing	TS	Thunderstorm

WEATHER PHENOMENA

BR	Mist	PE	Ice Pellets
DS	Dust Storm	P0	Dust/Sand Whirls
DU	Widespread Dust	PY	Spray
DZ	Drizzle	RA	Rain
FC	Funnel Cloud	SA	Sand
FC	Tornado/Water Spout	SG	Snow Grains
FG	Fog	SN	Snow
FU	Smoke	SQ	Squall
GA	Hail	SS	Sandstorm
GS	Small Hail/Snow Pellets	UP	Unknown Precipitation (Automated Observations)
HZ	Haze	VA	Volcanic Ash
IC	Ice Crystals		

CLOUD TYPES

CB	Cumulonimbus	TCU	Towering Cumulus
----	--------------	-----	------------------

CLOSE YOUR FLIGHT PLAN

FLIGHT PLAN

AFSSS 1-800-992-7433

1. TYPE VFR IFR DVR		2. AIRCRAFT IDENTIFICATION		3. AIRCRAFT TYPE SPECIAL EQUIPMENT		4. TRUE AIRSPEED KTS		5. DEPARTURE POINT		6. DEPARTURE TIME		7. CRUISING ALTITUDE	
								PROPOSED (Z)		ACTUAL (Z)			
5. ROUTE OF FLIGHT													
9. DESTINATION (Name of Airport and City)				10. EST TIME ENROUTE		11. REMARKS							
				HOURS									
12. FUEL ON BOARD		13. ALTERNATE AIRPORT		14. PILOT'S NAME, ADDRESS & TELEPHONE NUMBER & AIRCRAFT HOME BASE									
HOURS													
15. NUMBER ABOARD													
16. COLOR OF AIRCRAFT													
17. DESTINATION CONTACT/TELEPHONE (OPTIONAL)													

- /X - NO TRANSPONDER.
- /T - TRANSPONDER NO ALTITUDE ENCODING CAPABILITY.
- /U - TRANSPONDER WITH ALTITUDE ENCODING CAPABILITY.
- /D - DME, BUT NO TRANSPONDER.
- /B - DME, AND TRANSPONDER, BUT NO ALTITUDE ENCODING CAPABILITY.
- /A - DME AND TRANSPONDER WITH ALTITUDE ENCODING CAPABILITY.
- /M - TACAN ONLY, BUT NO TRANSPONDER.
- /N - TACAN ONLY AND TRANSPONDER, BUT NO ALTITUDE ENCODING CAPABILITY.
- /F - TACAN ONLY AND TRANSPONDER WITH ALTITUDE ENCODING CAPABILITY.
- /C - RNAV AND TRANSPONDER, BUT NO ALTITUDE ENCODING CAPABILITY.
- /R - RNAV AND TRANSPONDER WITH ALTITUDE ENCODING CAPABILITY.
- /W - RNAV BUT NO TRANSPONDER.
- /G - GPS



FLIGHT LOG

DEPARTURE POINT	VOR	RADIAL	DISTANCE	TIME		GROUND SPEED
	IDENT. FREQ.	TO FROM	LEG REMAINING	POINT - POINT CUMMULATIVE	TAKE OFF	
CHECK POINT		/			ETA	
					ATA	
		/				
		/				
		/				
DESTINATION		/				
			TOTAL			

PREFLIGHT CHECK LIST

DATE

EN ROUTE WEATHER / WEATHER ADVISORIES

DESTINATION WEATHER











WINDS ALOFT

ALTERNATE WEATHER

FORECASTS

NOTAMS / AIRSPACE RESTRICTIONS

GUIDE FOR AIRFIELD SIGNS

SIGN and LOCATION	PILOT ACTION or SIGN PURPOSE
 On Taxiways at Intersection with a Runway	Controlled Airport - Hold unless ATC Clearance has been received. Uncontrolled Airport - Proceed when no traffic conflict exists.
 Runway / Runway Intersection	Taxiing - Same action as above. Taking Off or Landing - Disregard unless a "Land, Hold Short" clearance has been accepted.
 Taxiway in Runway Approach of Departure Area	Controlled Airport - Hold when instructed by ATC. Uncontrolled Airport - Proceed when no traffic conflict exists.
 ILS Critical Area	Hold when approaches are being made with visibility less than 2 miles or ceiling less than 800 feet.
 Areas where Aircraft are Forbidden to Enter	Do not enter.
 Taxiway	Identifies taxiway on which aircraft is positioned.
 Runway	Identifies runway on which aircraft is positioned.
 Edge of Protected Airway for Runway	These signs are used on controlled airports to identify the boundary of the runway protected area. It is intended that pilots exiting this area would use this sign as a guide to judge when the aircraft is clear of the protected area.
 Edge of ILS Critical Area	These signs are used on controlled airports to identify the boundary of the LS critical area. It is intended that pilots exiting this area would use this sign as a guide to judge when the aircraft is clear of the ILS critical area.
 Taxiways and Runway	On Taxiways - Provides direction to turn at next intersection to maneuver aircraft onto named runway.

GUIDE FOR AIRFIELD SIGNS

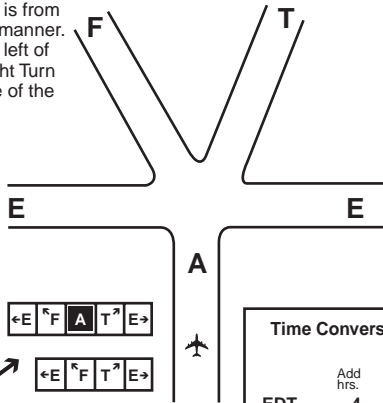
SIGN and LOCATION

PILOT ACTION or SIGN PURPOSE

	<p>Provides general taxiing direction to named runway.</p>
	<p>Provides general taxiing direction to identified destination.</p>
	<p>Provides remaining runway length in 1,000 feet increments.</p>

ARRANGEMENT OF SIGNS AT INTERSECTION

Note: Orientation of signs is from left to right in a clockwise manner. Left Turn Signs are on the left of the Location Sign and Right Turn Signs are on the right side of the Location Sign.



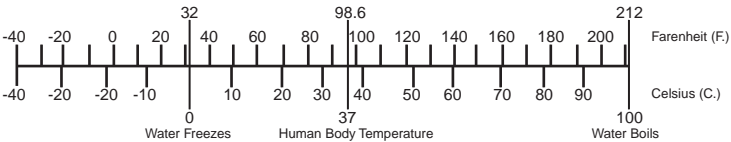
←E F A T E→

←E F T E→

Alternate array of signs shown to illustrate sign orientation when Location Sign not installed.

Time Conversion to UTC (Z)			
	Add hrs.		Add hrs.
EDT	4	MDT	6
EST	5	MST	7
CDT	5	PDT	7
CST	6	PST	8
Hawaii & Alaska		10	

TEMPERATURE CONVERSION



INTERCEPTING SIGNALS

Signals initiated by intercepting aircraft and responses by intercepted aircraft (as set forth in ICAO Annex 2-Appendix A, 2.1)

Series	Intercepting Aircraft Signals	Meaning	Intercepted Aircraft Responds	Meaning
1	<p>Day - Rocking wings from a position slightly above and ahead of, and normally to the left of, the intercepted aircraft and, after acknowledgement, a slow level turn, normally to the left, on to the desired heading.</p> <p>Night - Same and, in addition, flashing navigational lights at irregular intervals.</p> <p>Note 1 - Meteorological conditions or terrain may require the intercepting aircraft to take up a position slightly above and ahead of, and to the right of, the intercepted aircraft and to make the subsequent turn to the right.</p> <p>Note 2 - If the intercept aircraft is not able to keep pace with the intercepting aircraft, the latter is expected to fly a series of race-track patterns and to rock its wings each time it passes the intercepted aircraft.</p>	<p>You have been intercepted! Follow me.</p>	<p>Aeroplanes: Day - Rocking wings and following.</p> <p>Night - Same and, in addition, flashing navigational lights at regular intervals.</p> <p>Helicopters: Day or Night-Rocking Aircraft, flashing navigational lights at irregular intervals and following.</p>	<p>Understood, will comply.</p>
2	<p>Day or Night - An abrupt break-away maneuver from the intercepted aircraft consisting of a climbing turn of 90 degrees or more without crossing the line of flight of the intercepted aircraft.</p>	<p>You may proceed.</p>	<p>Aeroplanes: Day or Night - Rocking Wings.</p> <p>Helicopters: Day or Night - Rocking Aircraft.</p>	<p>Understood, will comply.</p>
3	<p>Day - Circling aerodrome, lowering landing gear and over-flying runway in direction of landing or, if the intercepted aircraft is a helicopter, over-flying the helicopter landing area.</p> <p>Night - Same and, in addition, showing steady landing lights.</p>	<p>Land at this aerodrome.</p>	<p>Aeroplanes: Day - Lowering landing gear, following the intercepting aircraft and, if after over-flying the runway landing is considered safe, proceed to land. Night - Same and, in addition, showing steady lights (if carried).</p> <p>Helicopters: Day or Night - Follow the intercepted aircraft and proceed to land, showing a steady landing light (if carried).</p>	<p>Understood, will comply.</p>
4	<p>Day or Night - Raising landing gear (if fitted) and flashing landing lights while passing over runway in use or helicopter landing area at a height exceeding 2,000 ft (in case of helicopter, at a height exceeding 170 ft, but not exceeding 330 ft) above the aerodrome level, and continuing to circle runway in use or helicopter landing area. If unable to flash landing lights, flash any other lights available.</p>	<p>Aerodrome you have designated is inadequate.</p>	<p>Day or Night - If it is desired that the intercepted aircraft follow the intercepting aircraft to an alternate aerodrome, the intercepting aircraft raises its landing gear (if fitted) and uses the Series 1 signals prescribed for intercepting aircraft.</p> <p>It is decided to release the intercepted craft, the intercepting aircraft uses the Series 2 signals prescribed for intercepting aircraft.</p>	<p>Understood, follow me.</p> <p>Understood, you may proceed.</p>
5	<p>Day or Nights - Regular switching on and off of all available lights but in such a manner as to be distinct from flashing lights.</p>	<p>Cannot comply.</p>	<p>Day or Night - Use Series 2 signals prescribed for intercepting aircraft.</p>	<p>Understood</p>
6	<p>Day or Nights - Irregular flashing of all available lights.</p>	<p>In distress.</p>	<p>Day or Night - Use Series 2 signals prescribed for intercepting aircraft.</p>	<p>Understood</p>

Light Gun Signals

Color and Type of Signal	Movement of Vehicles, Equipment and Personnel	Aircraft on the Ground	Aircraft in Flight
Steady Green	Cleared to Cross, Proceed or Go	Cleared for Take-off	Cleared to Land
Flashing Green	Not Applicable	Cleared for Taxi	Return for Landing, to be Followed by Steady Green at the Proper Time
Steady Red	STOP	STOP	Give Way to Other Aircraft and Continue Circling
Flashing Red	Clear the Taxiway/Runway	Taxi Clear of the Runway in Use.	Airport Unsafe, Do not Land
Flashing White	Return to Starting Point on Airport	Return to Starting Point on Airport	Not Applicable
Alternating Red and Green	Exercise Extreme Caution	Exercise Extreme Caution	Exercise Extreme Caution

10 Ways To Help Prevent

Runway Incursions

- 1 See The “Big Picture”**
Monitor both ground and tower communications when possible.
- 2 Transmit Clearly**
Make your instructions and read-backs complete and easy to understand.
- 3 Listen Carefully**
Listen to your clearance. Listen to what you read back. Do not let communications become automatic.
- 4 Copy Clearances**
Clearances can change. Keep a note pad and copy your clearance. If needed, refer to your notes.
- 5 Situational Awareness**
Know your location. If unfamiliar with an airport keep a current airport diagram available for easy reference.
- 6 Admit When Lost**
If you get lost on an airport, ask ATC for help. Better to damage your pride than your airplane.
- 7 Sterile Cockpit**
Maintain a sterile cockpit until reaching cruising altitude. Explain to your passengers that talking should be kept to a minimum.
- 8 Understand Signs, Lights And Markings**
Keep current with airport signs, lights and markings. Know what they mean and what action to take.
- 9 Never Assume**
Do not take clearances for granted. Look both ways before entering or crossing taxiways and runways.
- 10 Follow Procedures**
Establish safe procedures for airport operations. Then follow them.

For more information see the following:
www.faa.gov/airports/runway-safety

Automated Weather Observation System

The Automated Weather Observation System (AWOS) enhances safety by providing critical airport weather information to pilots to be used for flight planning and in-flight decision-making. The system provides real-time weather observations including wind, visibility, current weather, sky conditions, temperature, dew point, altimeter setting, and remarks, such as density altitude and local airport conditions.

AWOS information can be accessed in a variety of ways, including radio frequency, telephone and weather terminals at airports with AWOS. It can also be accessed from a variety of Web sites, most AWOS information is disseminated nationwide through a system called NADIN, making it available to sources like Flight Service Stations, the National Weather Service and Weather Channel.

What every pilot should know about AWOS

Wind

- taken every second and a running 2-minute average is updated every 5 seconds
- wind speeds of less than 3 knots are reported as calm
- if the difference between the highest 5-second average and 2-minute average exceeds 5 knots, gusts are reported
- wind direction is reported from the nearest 10 degree magnetic heading

Visibility

- readings are taken every 15 seconds and are averaged over a 10-minute period

Present weather

- a precipitation sensor samples every 15 seconds
- temperature and visibility measurements are used to determine precipitation type

Sky conditions (ceilings)

- readings are taken every 30 seconds and averaged over a 30-minute period
- ceiling measurements are rounded as follows:
 - nearest 100' up to 5000' AGL
 - nearest 500' from 5000'-10,000' AGL
 - nearest 1000' above 10,000'

Temperature and dew point

- four, 1-minute averages are used to determine the temperature

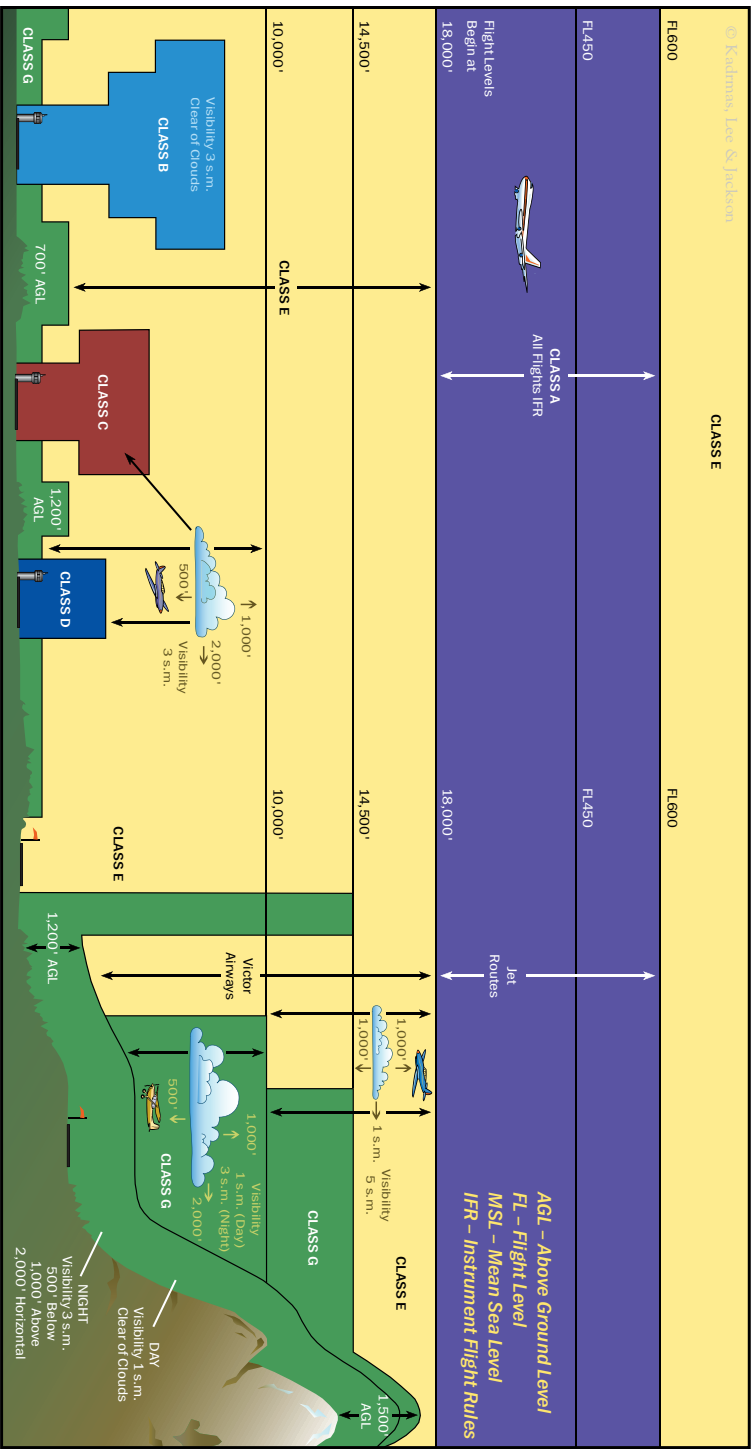
Altimeter (barometric pressure)




- pressure sensors take readings every 10 seconds and a 1-minute average is calculated




Remarks

- a calculated density altitude report is provided, if density altitude is greater than 1000' above the airport's field elevation
- Occasionally, airport managers will provide recorded remarks regarding NOTAM's or local airport conditions.

AWOS is maintained by the airport in North Dakota and is continuously monitored to ensure its operational status. Individual sites are also maintained and calibrated on a regular basis to ensure reliability and accuracy. As with any electronic device, care must be used when interpreting data. By knowing how AWOS data is collected, a pilot can better understand the information they are receiving.

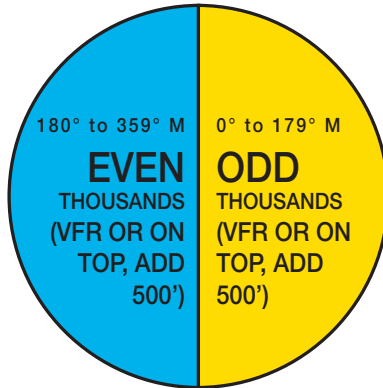


Classification	Definition
 CLASS A	Generally airspace above 18,000 feet MSL up to and including FL 600.
 CLASS B	Generally multi-layered airspace from the surface up to 10,000 feet MSL surrounding the nation's busiest airports.
 CLASS C	Generally airspace from the surface to 4,000 feet AGL surrounding towered airports with service by radar approach control.

Classification	Definition
 CLASS D	Generally airspace from the surface to 2,500 feet AGL surrounding towered airports.
 CLASS E	Generally controlled airspace that is not Class A, Class B, Class C, or Class D.
 CLASS G	Generally uncontrolled airspace that is not Class A, Class B, Class C, Class D, or Class E.

DIRECTIONAL ALTITUDE CHART

CRUISING ALTITUDES
(IFR WITHIN CONTROLLED AIRSPACE
MAY BE MODIFIED BY ATC)



Below 29,000' MSL

MORSE CODE AND PHONETIC ALPHABET

Alfa .__	Juliett .____	Sierra ...	2 ..____
Bravo __...	Kilo ____	Tango __	3 ...____
Charlie __. __.	Lima ____.	Uniform __..	4__
Delta ____.	Mike ____	Victor ...__	5
Echo .	November ____.	Whiskey .____	6
Foxtrot __. __.	Oscar _____	Xray ____.	7
Golf ____.	Papa ____.	Yankee ____.	8
Hotel	Quebec ____.	Zulu ____.	9
India ..	Romeo ____.	1. _____	0 _____

VFR TRANSPONDER CODES

Code 1200 – Surface to 18,000 Feet

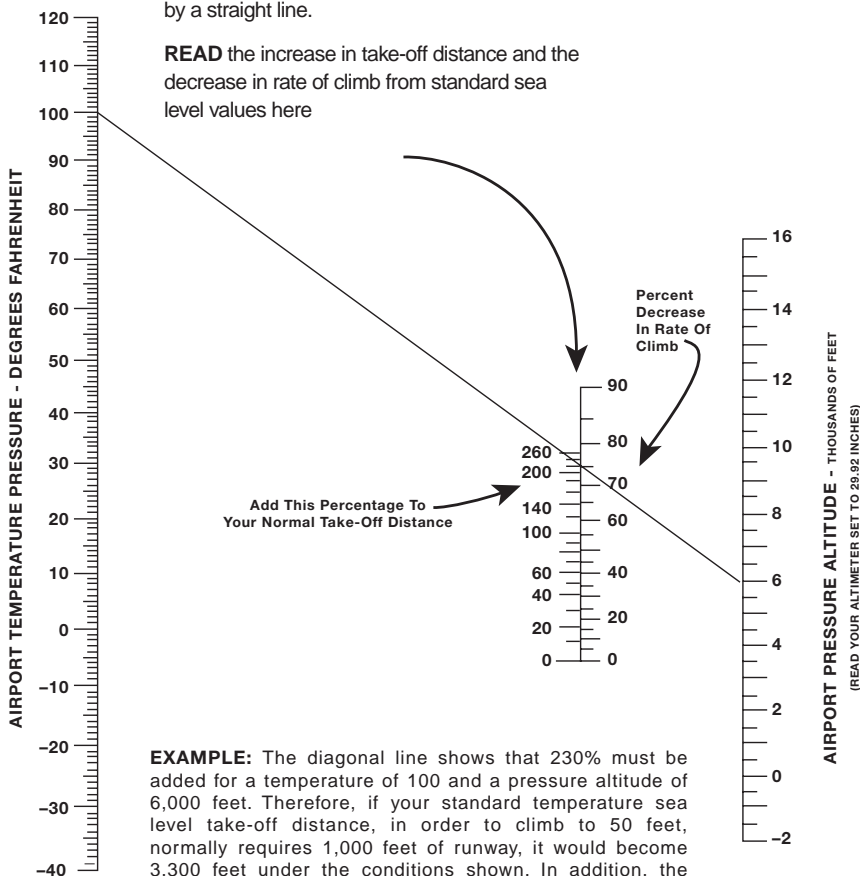
Code 7600 – Radio Failure

Code 7700 – Emergency

MODIFIED KOCH CHART FOR ALTITUDE AND TEMPERATURE EFFECTS

TO FIND the effect of altitude and temperature
CONNECT the temperature and airport altitude
 by a straight line.

READ the increase in take-off distance and
 the decrease in rate of climb from standard sea
 level values here



EXAMPLE: The diagonal line shows that 230% must be added for a temperature of 100 and a pressure altitude of 6,000 feet. Therefore, if your standard temperature sea level take-off distance, in order to climb to 50 feet, normally requires 1,000 feet of runway, it would become 3,300 feet under the conditions shown. In addition, the rate of climb would be decreased 76%. Also, if your normal sea level rate of climb is 500 feet per minute, it would become 120 feet per minute.

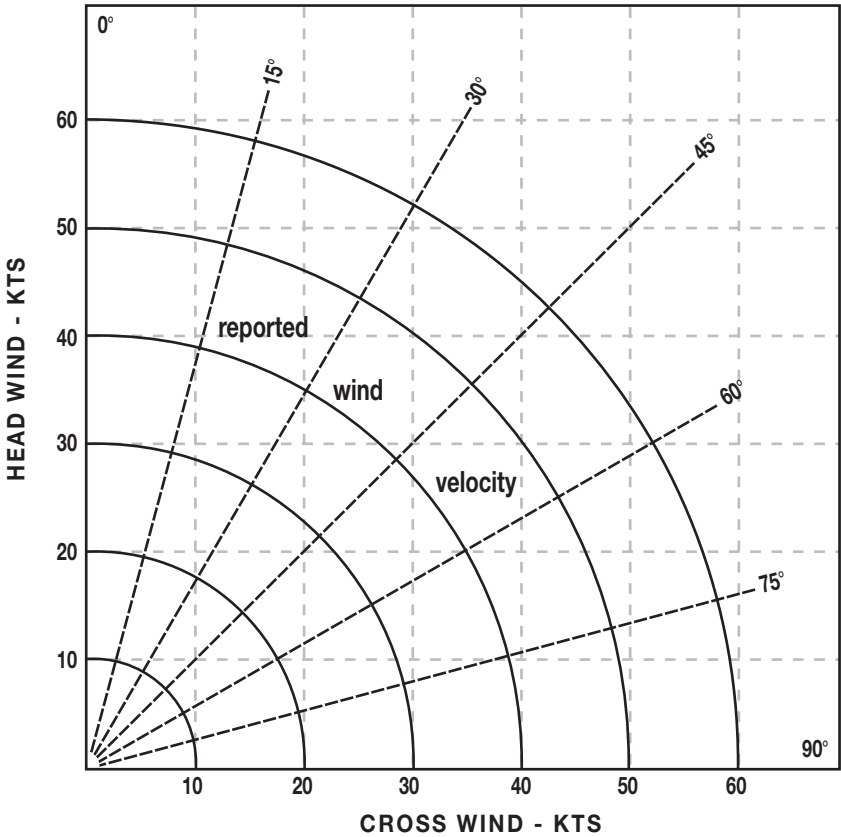
This chart indicates typical representative values for “personal” airplanes.

For exact values, consult your airplane flight manual.

The chart may be conservative for airplanes with supercharged engines.

Also, remember that long grass, sand, mud or deep snow can easily double your take-off distance.

WIND CHART FOR TAKEOFF



INSTRUCTIONS

1. Determine maximum 90° Cross Wind that you can handle. (Suggest 20% X Stall Speed). Place dot on 90° line at this value.
2. Determine maximum 45° Cross Wind that you can handle. (Suggest 30% X Stall Speed). Place dot on 45° line at this value.
3. Determine maximum Head Wind that you can handle. (Suggest 60% X Stall Speed). Place dot on 0° line at this value.
4. Connect dots with red line. Values to left of line are go wind velocities and directions.

LOCATION & FREQ.	REMARKS
BISMARCK (BIS) ASOS Vortac/DME 116.5 ILS 31 110.3 ILS 13 111.5 RCO 122.2 Tower/CTAF 118.3 Ground 121.9 App/Dep Con 126.3 ATIS 119.35 Unicom 122.95 Center 135.25	(701) 255-7563 HIWAS Rwy 31 Rwy 13 GFK FSS Tower Open (1200-0600Z)
BOTTINEAU (DO9) Center 127.6 Minot APP/Dep 119.6 Unicom/CTAF 122.8	MPLS Center
BOWMAN (BWW) AWOS-3 118.075 Center 132.425 RCO 122.4 Unicom/CTAF 122.8	(701) 523-3412 Salt Lake Center
CARRINGTON (46D) AWOS-3 118.575 Center 124.2 UNICOM/CTAF 122.9	701-652-1875 MPLS Center
CASSELTON (5N8) Center 127.35 Fargo APP/Dep 120.4 Vortac FAR 116.2 Unicom/CTAF 122.8	
CAVALIER (2C8) AWOS-3 118.275 Devils Lake RCO 122.3 Unicom/CTAF 122.8	701-265-8050 GFK Radio
COOPERSTOWN (S32) AWOS-3 118.750 Jamestown RCO 123.6 Unicom/CTAF 122.9	701-797-2566 GFK Radio
CROSBY (D50) AWOS-3 118.025 Center 126.85 Unicom/CTAF 122.9	701-965-6732 Salt Lake Center
DEVILS LAKE (DVL) AWOS-3 125.875 Vortac/DME 111.0 ILS 31 108.7 RCO 122.3 Unicom/CTAF 122.8	(701) 662-7214 Hiwas Rwy 31 GFK FSS

LOCATION & FREQ.	REMARKS
DICKINSON (DIK) ASOS 118.375 VOR DME 112.9 ILS 32 108.3 RCO 122.2 Center 124.25 Unicom/CTAF 123.0	(701) 227-0280 HIWAS Rwy 32 GFK FSS MPLS Center
FARGO (FAR) ASOS Vortac W 116.2 RCO 122.425 ILS 18 108.9 ILS 36 110.3 App/Dep Con 120.4 Center 127.35 Tower 133.8 Ground 121.9 ATIS 124.5 Unicom 122.95	(701) 298-3877 GFK FSS Rwy 18 Rwy 36
GARRISON (DO5) Center 127.6 Unicom/CTAF 122.9	MPLS Center
GLEN ULLIN (D57) AWOS 118.75 Center 124.25 RCO 122.45 Unicom/CTAF 122.9	(701) 348-9581
GRAFTON (GAF) AWOS-3 118.625 Center 132.15 GFK App/Dep 118.1 Unicom/CTAF 122.8	(701) 352-0581
GRAND FORKS (GFK) ASOS Vortac/DME 114.3 ILS 35L 109.1 LOC BC Rwy17R 109.1 RCO 122.2-122.6 App/Dep Con 118.1 Center 132.15 Tower/CTAF 118.4-120.55 Ground 124.575 ATIS 119.4 Unicom 122.95 Clearance 135.725	(701) 772-3486 HIWAS Rwy 35L Rwy 17R GFK FSS MPLS CTAF Tower Open (1200-0530)
GWINNER (GWR) AWOS 118.325 Center 127.35 Unicom/CTAF 122.7	(701) 678-6801 MPLS Center

LOCATION & FREQ.	REMARKS
HARVEY (5H4) AWOS-3 118.825 Center 135.25 Unicom/CTAF 122.8	(701) 324-2058 MPLS Center
HAZEN (HZE) AWOS-3 118.675 Center 124.25 RCO 122.45 Unicom/CTAF 122.8	(701) 748-2443 MPLS Center GFK FSS
HETTINGER (HEI) ASOS 119.925 Center 124.25 Unicom/CTAF 122.8	(701) 567-4594 MPLS Center
HILLSBORO (3H4) Center 127.35 Fargo App/DEP 120.4 Unicom/CTAF 122.9	
JAMESTOWN (JMS) ASOS 118.425 VOR/DME 114.5 ILS 31 109.3 RCO 123.6 Center 124.2 Unicom/CTAF 123.0	(701) 251-9002 HIWAS Rwy 31 GFK FSS MPLS Center
KENMARE (7K5) Center 127.6 Minot App/DEP 119.6 Unicom/CTAF 122.8	MPLS Center
MANDAN (Y19) AWOS-3 118.225 Bismarck App/DEP 126.3 Center 135.25 Unicom/CTAF 122.8 VOR/DME 116.5	(701) 663-0271 (1200-0600Z) MPLS Center (0600-1200Z) HIWAS
MINOT (MOT) ASOS 118.725 Vortac W 117.1 ILS 31 111.9 LOC BC Rwy 13 111.9 App/Dep Con 119.6 Tower/CTAF 118.2 Ground 121.9 RCO 122.2 Unicom 122.95 Center 127.6	(701) 837-9379 HIWAS Rwy 31 Rwy 13 Minot Air Base CTAF Tower open (1300-0400Z) GFK FSS MPLS Center

LOCATION & FREQ.	REMARKS
MOHALL (HBC) Minot App/DEP Con. 119.6 Center 127.6 Unicom/CTAF 122.8	
Northwood (4V4) Grand Forks App/DEP 118.1 Unicom/CTAF 122.8	
OAKES (2D5) AWOS-3 118.675 Center App/DEP 124.2 Unicom/CTAF 122.9	(701) 742-3991 MPLS Center
PEMBINA (PMB) VORTAC 112.4 FSS 122.1 R Center 132.15 Unicom/CTAF 122.8	MPLS Center
ROLLA (06D) AWOS-3 118.125 Center 127.6 RCO 122.65 Unicom/CTAF 122.8	(701) 447-0055 MPLS Center GFK FSS
RUGBY (RUG) AWOS-3 118.475 RCO 122.2 Unicom/CTAF 122.8	(701) 776-6100 GFK FSS
STANLEY (08D) AWOS-3 121.1 Center App/DEP 127.6 Unicom/CTAF 122.9	(701) 628-1737 MPLS Center
TIOGA (D60) AWOS-3 118.575 Center 127.6 Unicom/CTAF 122.9	(701) 664-4490 MPLS Center
VALLEY CITY (BAC) AWOS-3 118.725 Center App/DEP 124.2 Unicom/CTAF 122.8	(701) 845-9117 MPLS Center
WAHPETON (BWP) AWOS-3 127.875 Vortac 116.2 RCO 122.425 Unicom/CTAF 123.0	(701) 642-9800

LOCATION & FREQ.	REMARKS
WALHALLA (96D) Center App/DEP 132.15 Unicom/CTAF 122.9	MPLS Center
WATFORD CITY (S25) Center 126.85 Unicom/CTAF 122.8	Salt Lake Center
WILLISTON (ISN) ASOS 125.92 VORTAC 116.3 ILS 29 108.7 Center 126.85 RCO 123.6 Unicom/CTAF 122.8	(701) 774-3124 HIWAS Rwy 29 Salt Lake Center GFK FSS

Temporary Flight Restrictions

FAA NOTAMS 1-877-487-6867
<https://pilotweb.nas.faa.gov>

While TFR's may be triggered by different events, it is important that pilots familiarize themselves with each type of restriction, and how it may impact a pilot's proposed flight. Of equal importance, pilots must know how best to gain information concerning TFR's before each flight. Inadvertent flight into a TFR not only places a pilot's certificate at risk; it also increases the chances of being intercepted by military or law enforcement aircraft. Straying into TFR airspace may also increase the risk of a mid-air collision.

For further information on TFR's, you may visit FAA's website at <http://tfr.faa.gov> While flying in the vicinity of the Grand Forks Airport (KGFK), please familiarize yourself with the TFR located to the west of the airport.



AIR TRAFFIC CONTROLLER (ATCT)

- Bismarck ATCT – 701-223-8790
- Fargo ATCT – 701-239-5188
- Grand Forks ATCT – 701-775-2898
- Minot ATCT – 701-852-2346

ASOS or AWOS

CITY	ID.	FREQ.	PHONE
Beach	2OU	118.175	(701) 872-9225
Bismarck	BIS	119.35*	(701) 255-7563
NWS			** (701) 223-4582
Bowman	BWW	118.075	(701) 523-3412
Cando	9D7	118.325	(701) 968-3625
Carrington	46D	118.575	(701) 652-1875
Cavalier	2C8	118.275	(701) 265-8050
Cooperstown	S32	118.750	(701) 797-2566
Crosby	D50	118.025	(701) 965-6732
Devils Lake	DVL	125.875	(701) 662-7214
Dickinson	DIK	118.375	(701) 227-0280
Fargo	FAR	124.50*	(701) 298-3877
Glen Ullin	D57	118.75	(701) 348-9581
Grafton	GAF	118.625	(701) 352-0581
Grand Forks	GFK	119.40*	(701) 772-3486
NWS			** (701) 772-0720
Gwinner	GWR	118.325	(701) 678-6801
Harvey	5H4	118.825	(701) 324-2058
Hazen	HZE	118.675	(701) 748-2443
Hettinger	HEI	119.925	(701) 567-4594
Jamestown	JMS	118.425	(701) 251-9002
Langdon	D55	118.225	(701) 256-2121
Linton	7L2	118.175	(701) 254-4965
Mandan	Y19	118.225	(701) 663-0271
Minot	MOT	118.725	(701) 837-9379
Oakes	2D5	118.675	(701) 742-3991
Rolla	06D	118.125	(701) 477-0055
Rugby	RUG	118.475	(701) 776-6100
Stanley	08D	121.1	(701) 628-1737
Tioga	D60	118.575	(701) 664-4490
Valley City	BAC	118.725	(701) 845-9117
Wahpeton	BWP	127.875	(701) 642-9800
Walhalla	96D	118.175	(701) 549-3402
Watford City	S25	118.125	(701) 842-4855
Williston	ISN	125.92	(701) 774-3124
NWS			** (701) 572-3198

*ATIS **NATIONAL WEATHER SERVICE (NWS)

AIRPORT IDENTIFIERS

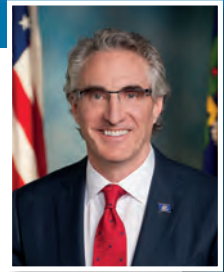
IDENT.	LOCATION	CTAF	IDENT.	LOCATION	CTAF
1A2	Arthur	122.9*	D55	Langdon	122.8*
ASY	Ashley	122.9*	2L1	Larimore	122.9
20U	Beach	122.8*	D31	Leeds	122.8*
95D	Beulah	122.9*	4N4	Lidgerwood	122.9
BIS	Bismarck	118.3* -TWR	7L2	Linton	122.9*
D09	Bottineau	122.8*	6L3	Lisbon	122.9
5B4	Bowbells	122.9	7G2	McClusky	122.9*
BWW	Bowman	122.8*	8M6	McVille	122.9
9D7	Cando	122.9*	6D3	Maddock	122.9
46D	Carrington	122.9*	Y19	Mandan	122.8*
5N8	Casselton	122.8*	D56	Mayville	122.8*
2C8	Cavalier	122.8*	4R6	Milnor	122.9
D49	Columbus	122.9	MOT	Minot	118.2* -TWR.
S32	Cooperstown	122.9*	D06	Minto	122.9
D50	Crosby	122.9*	HBC	Mohall	122.8*
DVL	Devils Lake	122.8*	3P3	Mott	122.9*
DIK	Dickinson	123.0*	5B5	Napoleon	122.9*
D29	Drayton	122.9*	8J7	New Rockford	122.9
S28	Dunseith	122.8	05D	New Town	122.9*
51D	Edgeley	122.8*	4V4	Northwood	122.8*
Y71	Elgin	122.9*	2D5	Oakes	122.9*
4E7	Ellendale	122.9*	64G	Page Regional	122.9
5N4	Enderlin	122.9*	Y37	Park River	122.8*
FAR	Fargo	133.8 - TWR	Y74	Parshall	122.8*
D24	Fessenden	122.9*	PMB	Pembina	122.8*
Y27	Fort Yates	122.9	Y99	Plaza	122.9
9G9	Gackle	122.9	4E8	Richardton	122.9
D05	Garrison	122.9*	37N	Riverdale	122.9
D57	Glen Ullin	122.9*	2H9	Rolette	122.8*
GAF	Grafton	122.8*	06D	Rolla	122.8*
GFK	Grand Forks	118.4*TWR	RUG	Rugby	122.8*
GWR	Gwinner	122.7*	4S5	St. Thomas	122.9*
5H4	Harvey	122.8*	08D	Stanley	122.9*
6H8	Hazelton	122.9	D60	Tioga	122.9*
HZE	Hazen	122.8*	D61	Towner	122.8*
HEI	Hettinger	122.8*	91N	Turtle Lake	122.8*
3H4	Hillsboro	122.9*	BAC	Valley City	122.8*
JMS	Jamestown	123.0*	BWP	Wahpeton	123.0*
7K5	Kenmare	122.8*	96D	Walhalla	122.9*
9Y1	Killdeer	122.9*	5C8	Washburn	122.9*
K74	Kindred	122.9*	S25	Watford City	122.8*
D03	Kulm	122.9	D54	West Fargo	122.7*
5L0	Lakota	122.9*	D64	Westhope	122.9*
4F9	LaMoure	122.9*	ISN	Williston	122.8*
			6L5	Wishek	122.9*

* - Aircraft Radio Controlled Airport Lighting Activation and/or increase intensity level through 3, 5, or 7 microphone clics.



— State of —
North Dakota
Office of the Governor

Doug Burgum
Governor



Welcome to the Legendary Skies of North Dakota!

As you plan your business or vacation flight, we invite you to take a scenic journey through our state. Discover the stunning beauty of our diverse landscape and the abundant recreational opportunities that make North Dakota an exceptional destination to include on your flight plan. Our state offers many great adventures, breathtaking natural wonders and exciting events for residents and visitors alike.

North Dakota's aviation industry enjoys a well-earned reputation as a world leader in cutting-edge technology and research. The John D. Odegard School of Aerospace Sciences at the University of North Dakota in Grand Forks operates the largest civilian training fleet in the world. The Northern Plains Unmanned Aerial Systems (UAS) Test Site continues to lead the country in UAS research and development as we work toward a solution to integrating UAS into the national airspace system.

As North Dakota continues efforts to strengthen its position as an aerospace industry leader, our state remains committed to fostering an innovative and nurturing environment where the spirit of entrepreneurial ideas can take flight.

I hope you enjoy your time here and create lasting memories as you experience all that North Dakota has to offer.

Sincerely,

Doug Burgum
Governor



Commissioners

Dr. Kim Kenville, Chair, Grand Forks
Warren Pietsch, Vice-Chair, Minot
Maurice Cook, Bismarck
Jay B. Lindquist, Hettinger
Cindy Schreiber-Beck, Wahpeton

Mission

To serve the public by providing economic and technical assistance for the aviation community while ensuring the safe and cost-effective advancement of aviation in North Dakota.